

107 S. CHARLES STREET  
WHITE CLOUD, MICHIGAN

RETAIL FOR SALE  
2,539 Square Feet Available



**SIGNATURE  
ASSOCIATES**  
KNOW SIGNATURE | KNOW RESULTS

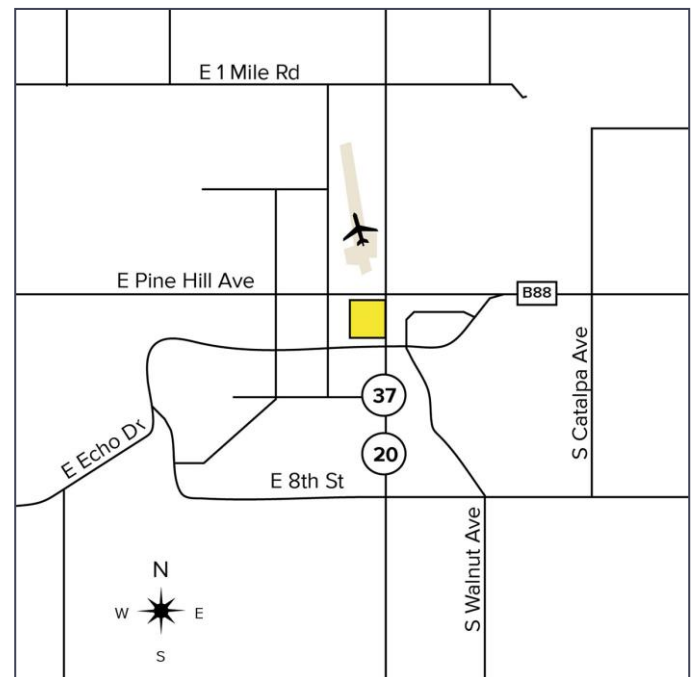
## WHITE CLOUD TOBACCO



### PROPERTY FEATURES

- 2,539 total square feet
- Located on 0.41 acres
- Zoned C-3
- Built in 1970's; remodeled in 2021
- Security system in place
- Sale Price: \$199,000

**Comments:** Free-Standing smoke shop along busy M-20/m-37/S Charles Street. Space is split into two (2) units. One is a long-standing smoke shop; full turn-key. Second suite is a vacant suite; needs to be spruced up. Ample parking in back. Great opportunity to start a business and make rental income!



For more information, please contact:

**JOE RIZQALLAH**  
(616) 822 6310  
jrizzqallah@signatureassociates.com

**PAMELA K. SCHWALLIER**  
(616) 490 4630  
pam@greatlakessignatureproperties.com

**SIGNATURE ASSOCIATES**  
1188 East Paris Ave SE, Suite 220  
Grand Rapids, MI 49546  
www.signatureassociates.com

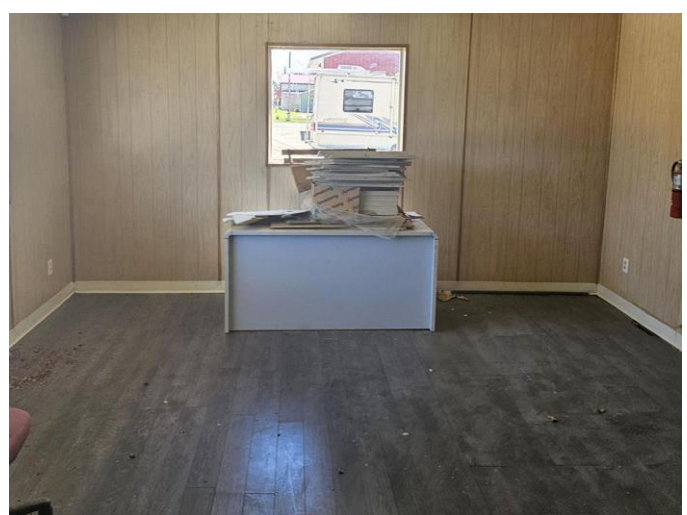
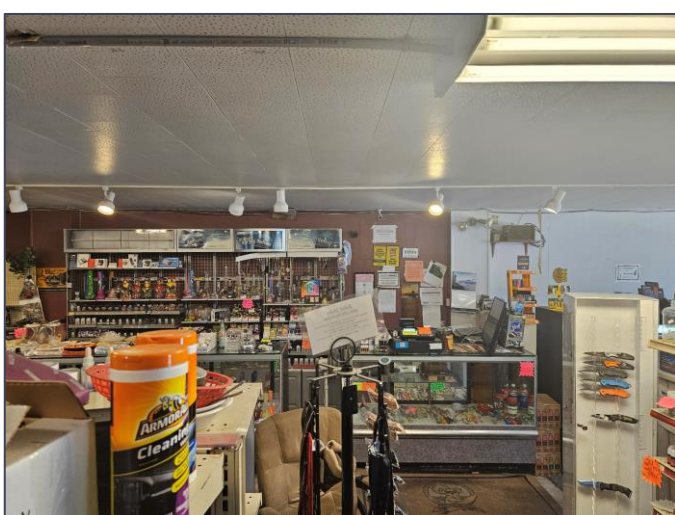
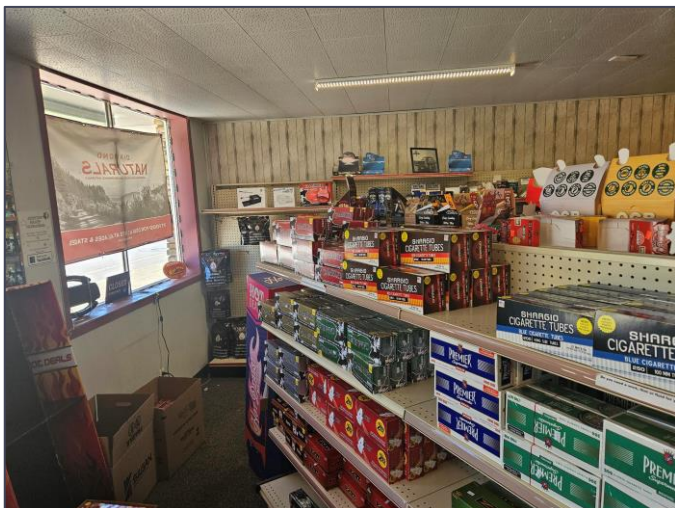


107 S. Charles Street – White Cloud, Michigan

Retail for Sale

2,539  
Square Feet  
AVAILABLE

Additional Photos



For more information, please contact:

**JOE RIZQALLAH**  
(616) 822 6310  
jrizzqallah@signatureassociates.com

**PAMELA K. SCHWALLIER**  
(616) 490 4630  
pam@greatlakessignatureproperties.com

**SIGNATURE ASSOCIATES**  
1188 East Paris Ave SE, Suite 220  
Grand Rapids, MI 49546  
www.signatureassociates.com

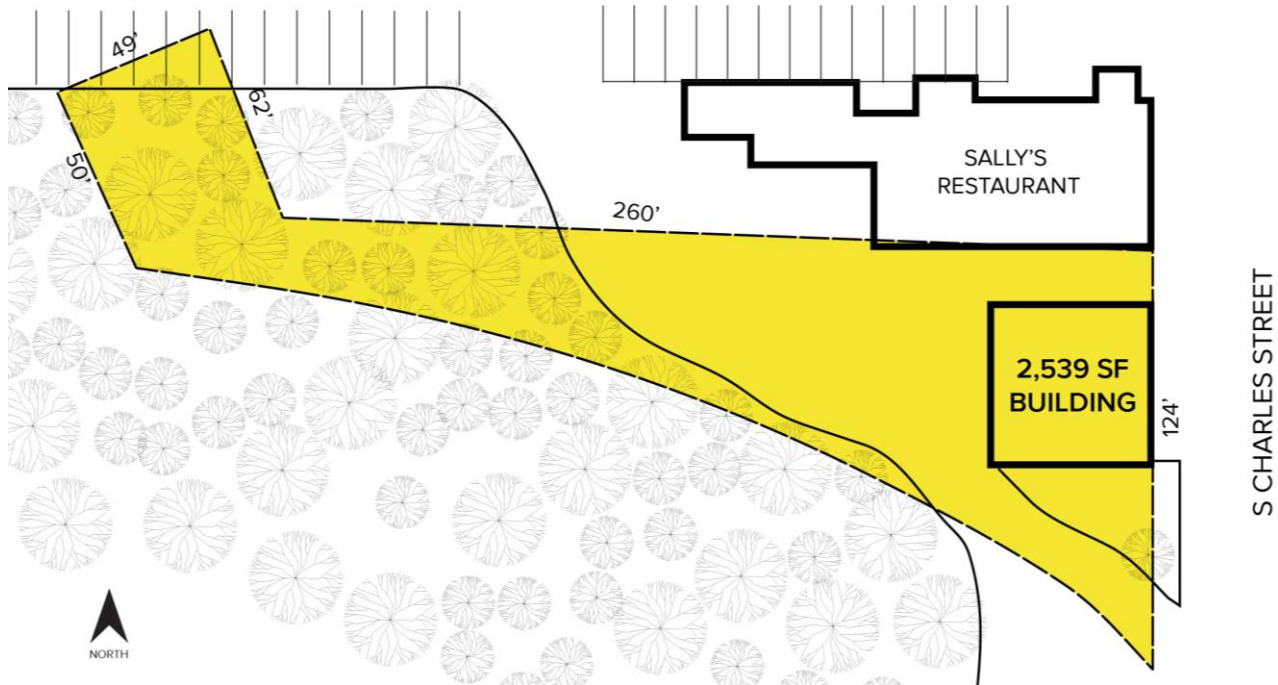


# 107 S. Charles Street – White Cloud, Michigan

Retail for Sale

2,539  
Square Feet  
AVAILABLE

## Site Plan



*\*\*\*Lot dimensions are approximate\*\*\**

## Aerial



For more information, please contact:

**JOE RIZQALLAH**

(616) 822 6310

jrizzqallah@signatureassociates.com

**PAMELA K. SCHWALLIER**

(616) 490 4630

pam@greatlakessignatureproperties.com

**SIGNATURE ASSOCIATES**

1188 East Paris Ave SE, Suite 220

Grand Rapids, MI 49546

www.signatureassociates.com