

SPACES AVAILABLE FROM 10,906± TO 22,036± SF

For Lease

# Runnemedede Corporate Center

E. Ninth Avenue, Runnemedede, NJ 08078

Industrial/Flex Park at Exit 3 of the New Jersey Turnpike



**JONATHAN KLEAR**  
SENIOR VICE PRESIDENT  
jonathan.klear@naimertz.com  
+1 856 433 1801



**FRED MEYER, SIOR**  
EXECUTIVE VICE PRESIDENT  
fred.meyer@naimertz.com  
+1 856 802 6515

*No warranty or representation, expressed or implied, is made as to the accuracy of the information contained herein, and same is submitted subject to error and omissions.*

# Runnemedes Corporate Center

E. Ninth Avenue, Runnemedes, NJ 08078

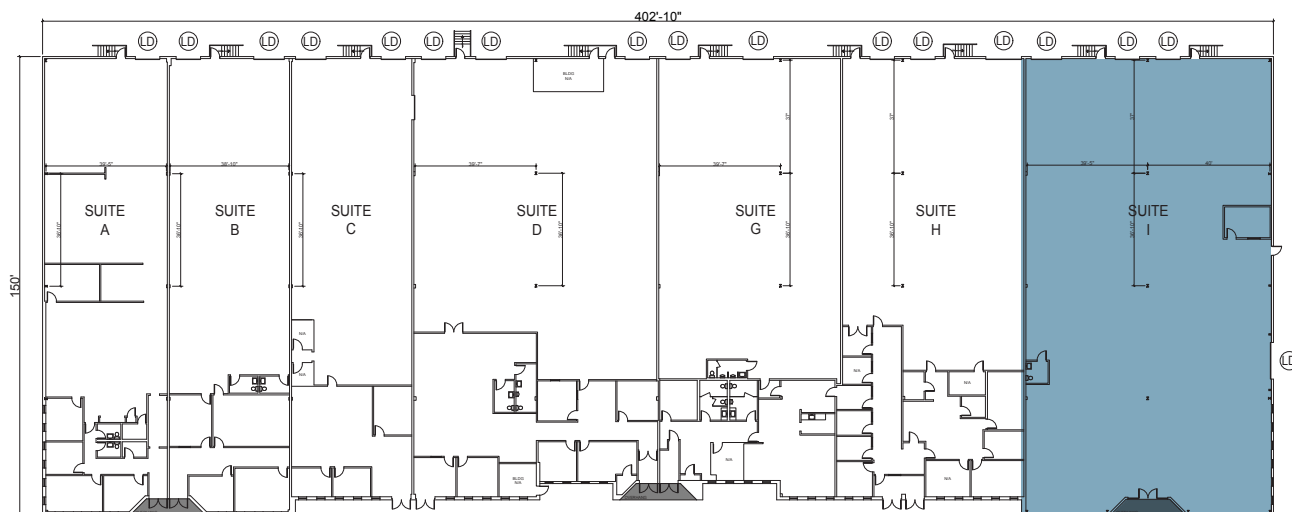
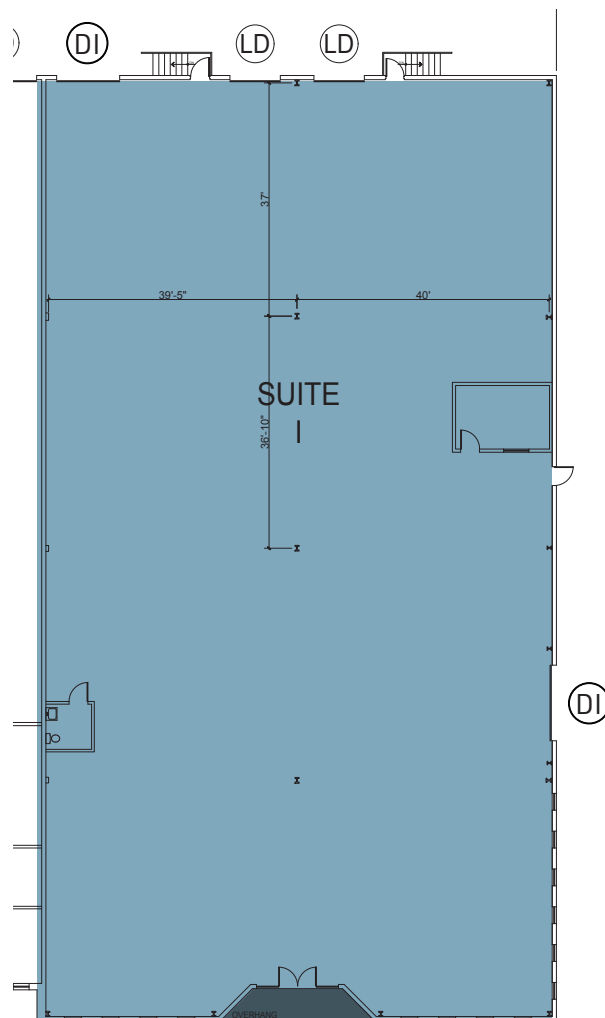
Industrial/Flex Park at Exit 3 of the New Jersey Turnpike



## CURRENT AVAILABILITIES

### 155 E. 9th Avenue - Suite I

Available SF	12,205± SF
Office Space	Manager's office & 1 restroom
Column Spacing	40' x 37'
Ceiling Height	22'
Loading	2 tailgate docks 1 ramped drive-in 1 grade-level side drive-in
Sprinkler	Wet sprinkler system
Total Bldg SF	59,000± SF



# Runnemedo Corporate Center

E. Ninth Avenue, Runnemedo, NJ 08078

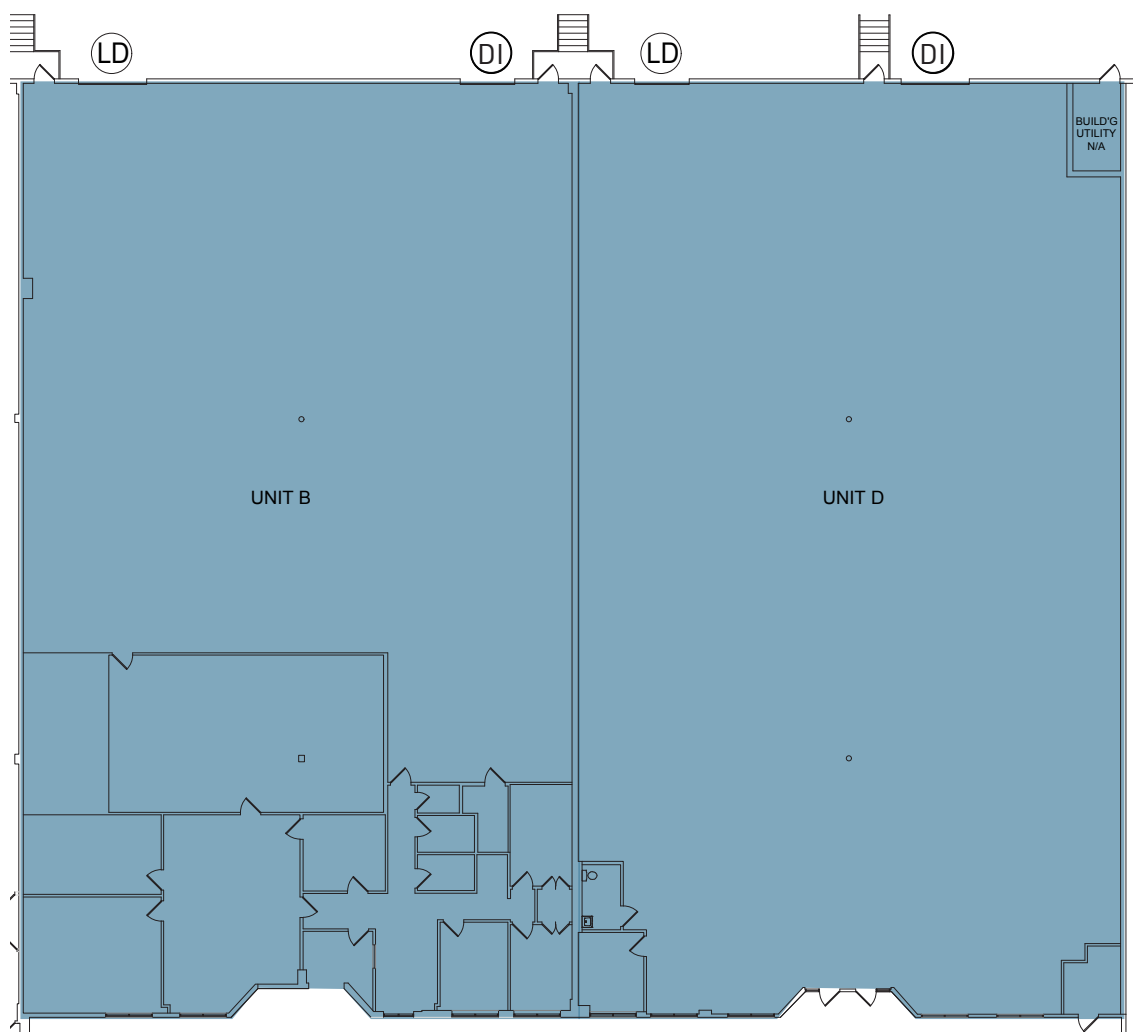
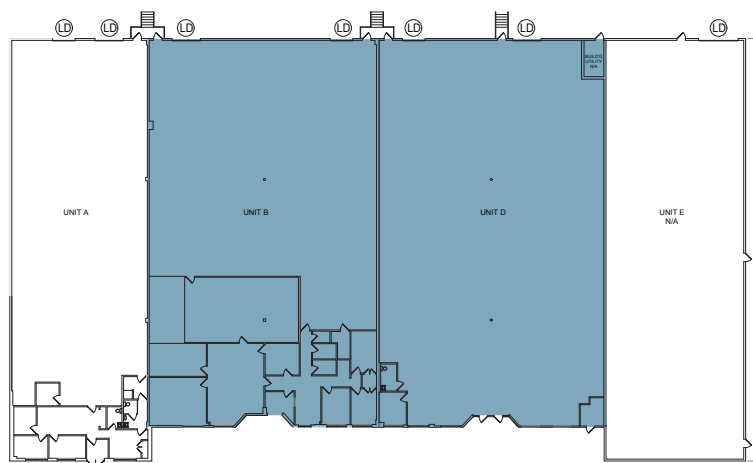
Industrial/Flex Park at Exit 3 of the New Jersey Turnpike



## CURRENT AVAILABILITIES

### 175 E. 9th Avenue - Suite B & D

Available SF	22,036± SF
Divisible	Suite B: 11,130± SF (1 TG, 1 DI) Suite D: 10,906± SF (1 TG, 1 DI)
Office Space	Office to suit
Column Spacing	41' x 50'
Ceiling Height	Up to 22'
Loading	2 tailgate docks 2 ramped drive-ins
Sprinkler	Wet sprinkler system
Total Bldg SF	36,986± SF

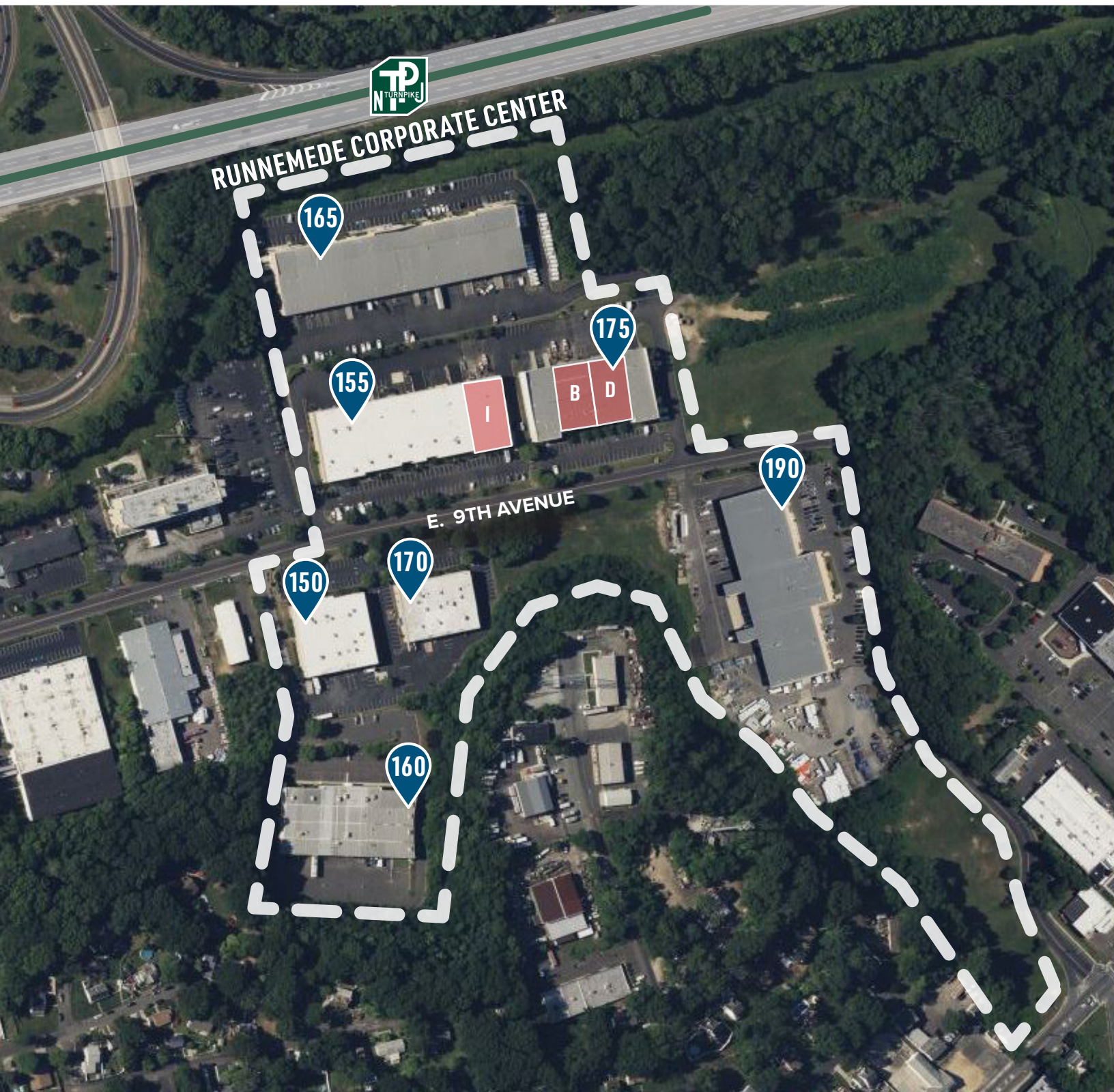




# Runnemedede Corporate Center

E. Ninth Avenue, Runnemedede, NJ 08078

Industrial/Flex Park at Exit 3 of the New Jersey Turnpike





# Runnemedde Corporate Center

E. Ninth Avenue, Runnemedde, NJ 08078

Industrial/Flex Park at Exit 3 of the New Jersey Turnpike



## LOCATION:

- 0.7 miles to NJ Turnpike (Exit 3)
- 1.5 miles to I-295 (Exit 28)
- 2 miles to Route 42
- 9.5 miles to Center City Philadelphia



**JONATHAN KLEAR**  
SENIOR VICE PRESIDENT  
jonathan.klear@naimertz.com  
+1 856 433 1801



**FRED MEYER, SIOR**  
EXECUTIVE VICE PRESIDENT  
fred.meyer@naimertz.com  
+1 856 802 6515



No warranty or representation, expressed or implied, is made as to the accuracy of the information contained herein, and same is submitted subject to error and omissions.