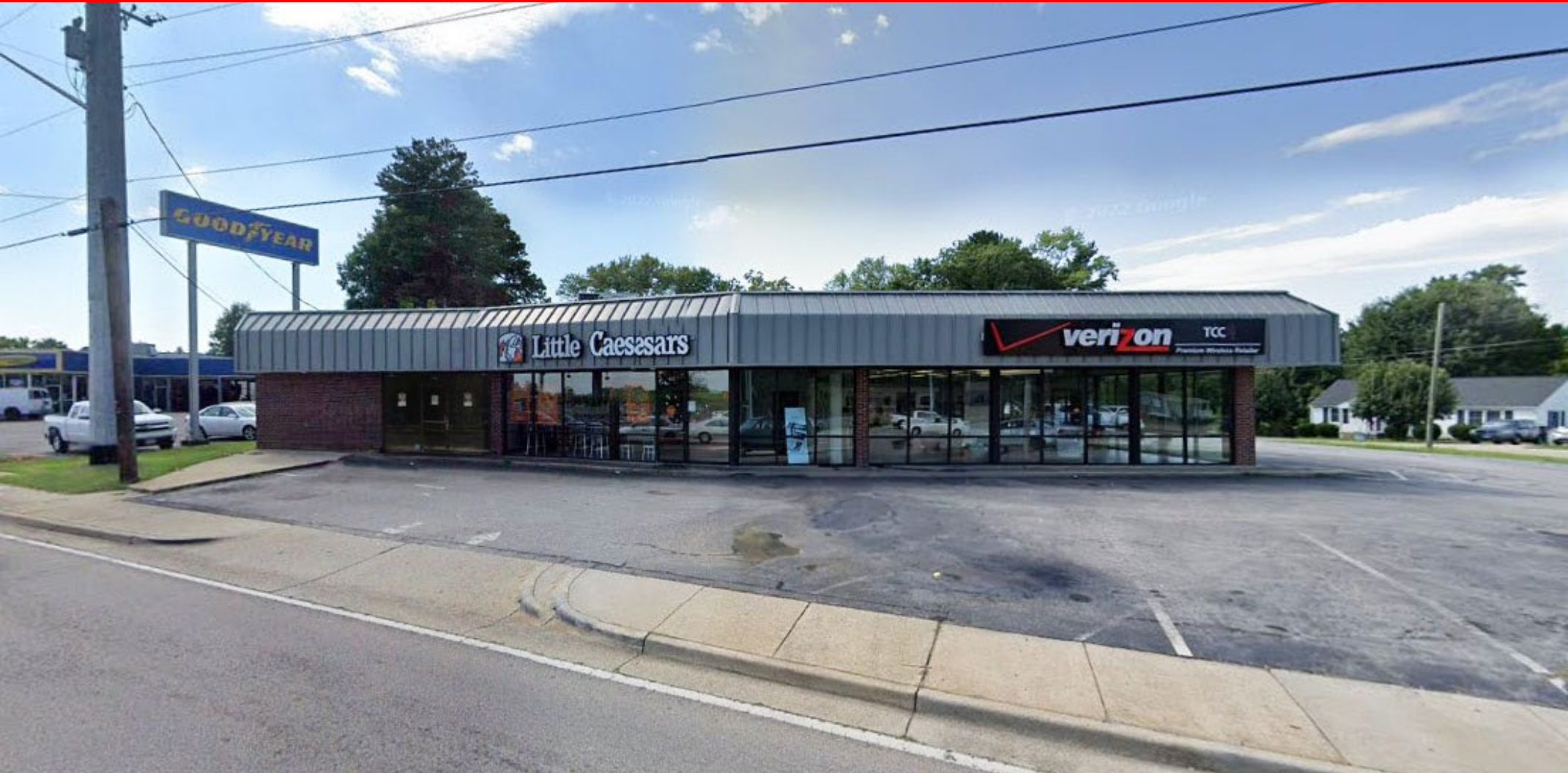


**PLANET CRE**

Commercial Real Estate

**For Lease**  
**1287 Piney Forest Rd STE 400**  
**Danville | Virginia**



**For more information, please contact:**

**Rupesh Bharad**

**(804) 835-6363**

**[rupesh@tworld.com](mailto:rupesh@tworld.com)**

**Planet CRE**

**5300 Hickory Park Dr Ste 225**

**Glen Allen, VA 23059**

**[www.PlanetCRE.com](http://www.PlanetCRE.com)**

*Planet CRE© 2016. The information contained herein has been obtained through sources deemed reliable. However, we cannot warrant the complete accuracy thereof subject to errors, omissions, change of price, rental or other conditions, prior sale, lease or financing, or withdrawal without notice. Any information of special interest should be obtained through independent verification.*



**PLANET CRE**

Commercial Real Estate

**For Lease**  
**1287 Piney Forest Rd STE 400**  
**Danville | Virginia**



**For more information, please contact:**

**Rupesh Bharad**

**(804) 835-6363**

**[rupesh@tworld.com](mailto:rupesh@tworld.com)**

**Planet CRE**

**5300 Hickory Park Dr Ste 225**

**Glen Allen, VA 23059**

**[www.PlanetCRE.com](http://www.PlanetCRE.com)**

*Planet CRE© 2016. The information contained herein has been obtained through sources deemed reliable. However, we cannot warrant the complete accuracy thereof subject to errors, omissions, change of price, rental or other conditions, prior sale, lease or financing, or withdrawal without notice. Any information of special interest should be obtained through independent verification.*

# For Lease 1287 Piney Forest Rd STE 400 Danville | Virginia

Property Type :	Retail
Building Size:	8,348 SF
Building Class:	C
Zoning:	HRC
Parking:	30 Spaces
Parcel ID:	55592
Available Space Size:	2000 SQ FT
Monthly Rent:	\$2500.00



For more information, please contact:

Rupesh Bharad  
(804) 835-6363  
[rupesh@tworld.com](mailto:rupesh@tworld.com)

Planet CRE  
5300 Hickory Park Dr Ste 225  
Glen Allen, VA 23059  
[www.PlanetCRE.com](http://www.PlanetCRE.com)



**PLANET CRE**

Commercial Real Estate

**For Lease**  
**1287 Piney Forest Rd STE 400**  
**Danville | Virginia**



**For more information, please contact:**

**Rupesh Bharad**

**(804) 835-6363**

**[rupesh@tworld.com](mailto:rupesh@tworld.com)**

**Planet CRE**

**5300 Hickory Park Dr Ste 225**

**Glen Allen, VA 23059**

**[www.PlanetCRE.com](http://www.PlanetCRE.com)**

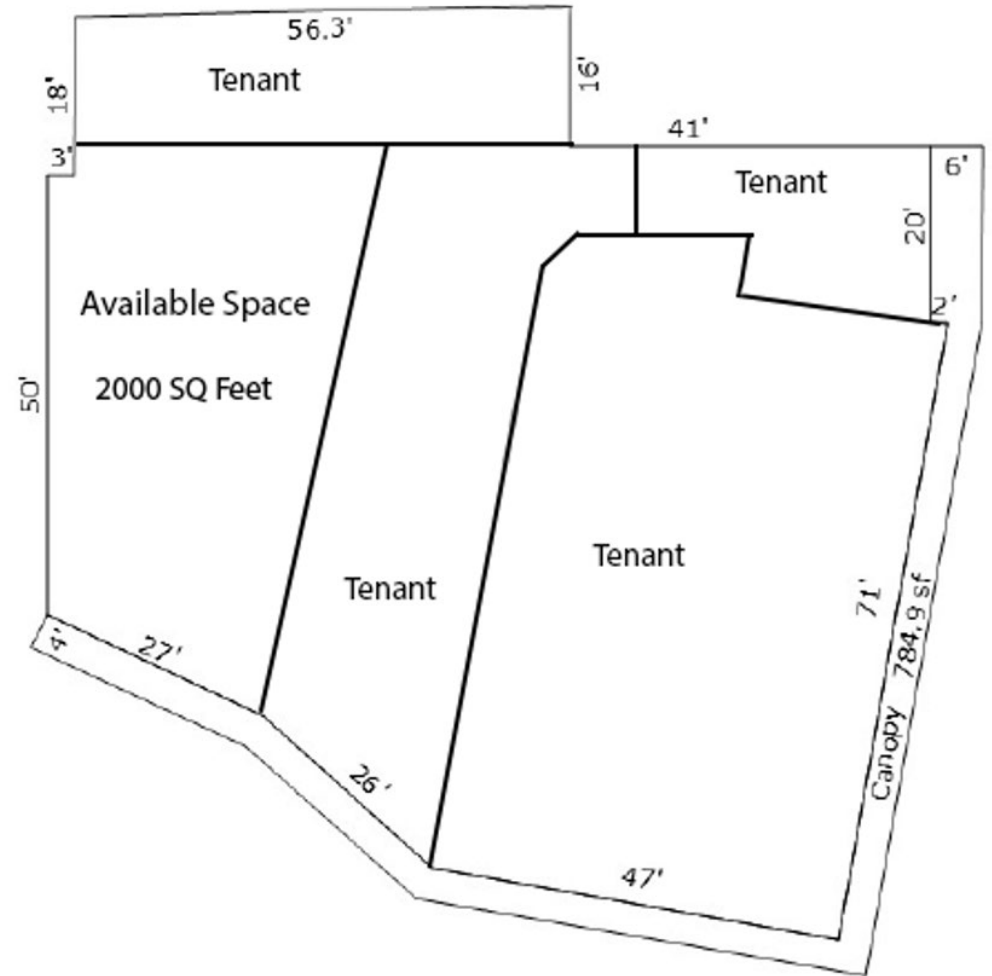
*Planet CRE© 2016. The information contained herein has been obtained through sources deemed reliable. However, we cannot warrant the complete accuracy thereof subject to errors, omissions, change of price, rental or other conditions, prior sale, lease or financing, or withdrawal without notice. Any information of special interest should be obtained through independent verification.*



**PLANET CRE**

Commercial Real Estate

**For Lease**  
**1287 Piney Forest Rd STE 400**  
**Danville | Virginia**



**For more information, please contact:**

**Rupesh Bharad**

**(804) 835-6363**

**[rupesh@tworld.com](mailto:rupesh@tworld.com)**

**Planet CRE**

**5300 Hickory Park Dr Ste 225**

**Glen Allen, VA 23059**

**[www.PlanetCRE.com](http://www.PlanetCRE.com)**

*Planet CRE© 2016. The information contained herein has been obtained through sources deemed reliable. However, we cannot warrant the complete accuracy thereof subject to errors, omissions, change of price, rental or other conditions, prior sale, lease or financing, or withdrawal without notice. Any information of special interest should be obtained through independent verification.*



**PLANET CRE**

Commercial Real Estate

For Lease  
1287 Piney Forest Rd STE 400  
Danville | Virginia



**For more information, please contact:**

**Rupesh Bharad**

**(804) 835-6363**

**[rupesh@tworld.com](mailto:rupesh@tworld.com)**

**Planet CRE**

**5300 Hickory Park Dr Ste 225**

**Glen Allen, VA 23059**

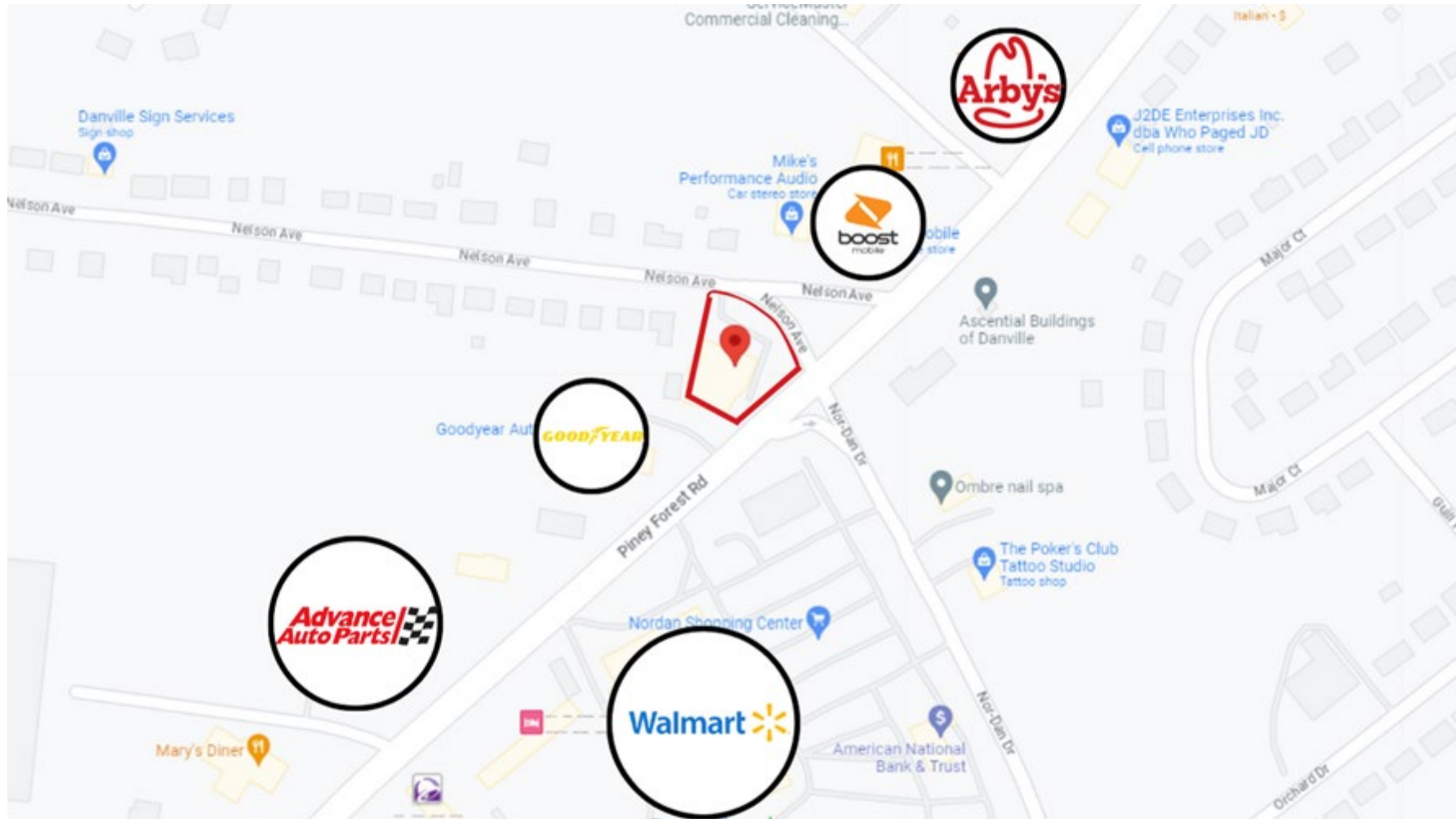
**[www.PlanetCRE.com](http://www.PlanetCRE.com)**

*Planet CRE© 2016. The information contained herein has been obtained through sources deemed reliable. However, we cannot warrant the complete accuracy thereof subject to errors, omissions, change of price, rental or other conditions, prior sale, lease or financing, or withdrawal without notice. Any information of special interest should be obtained through independent verification.*

**PLANET CRE**

Commercial Real Estate

**For Lease**  
**1287 Piney Forest Rd STE 400**  
**Danville | Virginia**



**For more information, please contact:**

**Rupesh Bharad**

**(804) 835-6363**

**[rupesh@tworld.com](mailto:rupesh@tworld.com)**

**Planet CRE**

**5300 Hickory Park Dr Ste 225**

**Glen Allen, VA 23059**

**[www.PlanetCRE.com](http://www.PlanetCRE.com)**

*Planet CRE© 2016. The information contained herein has been obtained through sources deemed reliable. However, we cannot warrant the complete accuracy thereof subject to errors, omissions, change of price, rental or other conditions, prior sale, lease or financing, or withdrawal without notice. Any information of special interest should be obtained through independent verification.*

**PLANET CRE**

Commercial Real Estate



**Rupesh Bharad**

Planet CRE

[rupesh@tworld.com](mailto:rupesh@tworld.com)

(804) 835-6363

**For more information, please contact:**

**Rupesh Bharad**

***(804) 835-6363***

***rupesh@tworld.com***

**Planet CRE**

**5300 Hickory Park Dr Ste 225**

**Glen Allen, VA 23059**

***www.PlanetCRE.com***

Planet CRE© 2016. The information contained herein has been obtained through sources deemed reliable. However, we cannot warrant the complete accuracy thereof subject to errors, omissions, change of price, rental or other conditions, prior sale, lease or financing, or withdrawal without notice. Any information of special interest should be obtained through independent verification.