

# OFFICE COURT ON INVERNESS



Accountability · Integrity · Family · Teamwork · Fun

## FOR LEASE

88 Inverness Circle East, Englewood, CO 80112

### AVAILABLE SUITES

Suite	SF	Lease Rate
A-101	1,525	\$24PSF MG
C-103	730	\$24PSF MG
I-104	882	\$24PSF MG
E-105	1,135	\$24PSF MG



### HIGHLIGHTS

- ▶ Ample on-site parking
- ▶ 10' ceilings
- ▶ Easily accessible to Arapahoe Road, I-25, and I-225
- ▶ Operable windows
- ▶ Individually controlled HVAC



### DESCRIPTION

This Class A office park, next to Inverness Golf Course, features flexible office spaces in a 14-building complex designed for small businesses. Office Court on Inverness provides amenities and services typically available to larger tenants, such as private entrances, signage, private restrooms, and control over HVAC. The focus here is creating a pleasant work environment. With operable windows, ample parking, and proximity to all major highways, this property truly has it all!



Elly Hutchinson

[ehutchinson@resoluteinv.com](mailto:ehutchinson@resoluteinv.com)

(720) 838-1157



7374 South Alton Way Suite 203 Centennial, CO 80112

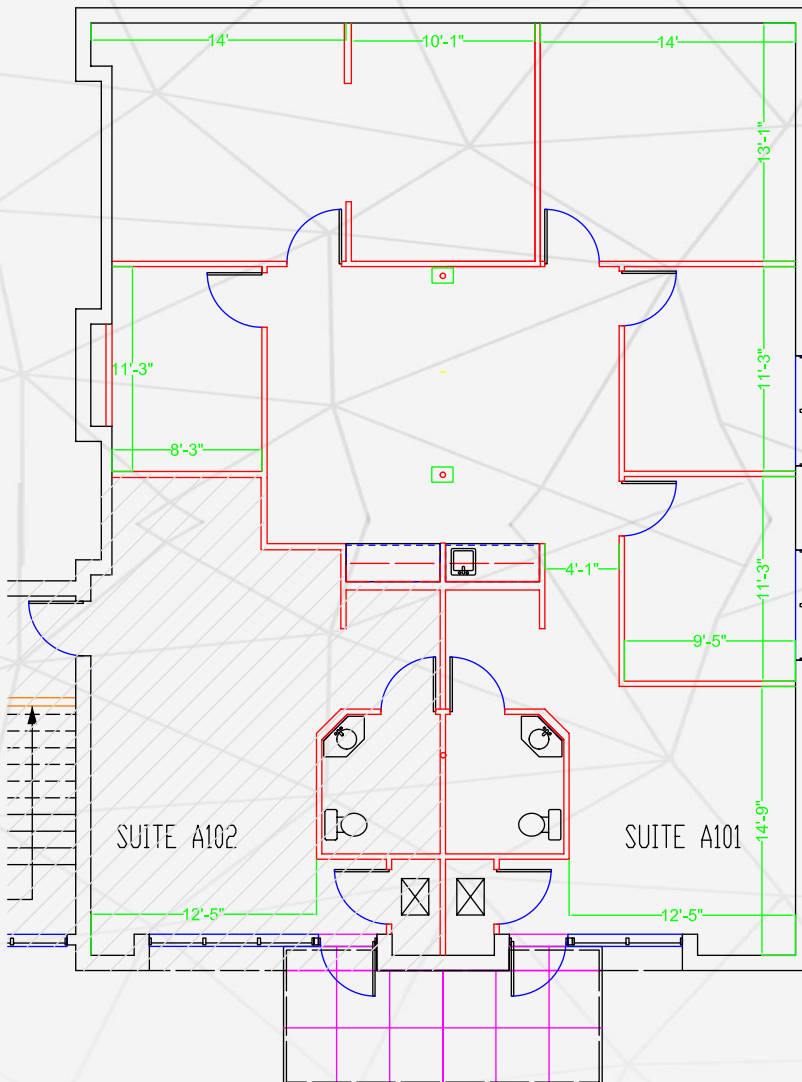
88 Inverness Circle East



Accountability · Integrity · Family · Teamwork · Fun

FOR LEASE

FLOORPLANS



Office Court on Inverness  
Suite A101 -- 1,617 sf



Elly Hutchinson

PHONE: 720-838-1157

EMAIL: EHUTCHINSON@RESOLUTEINV.COM