

# 252 YANDELL AVENUE

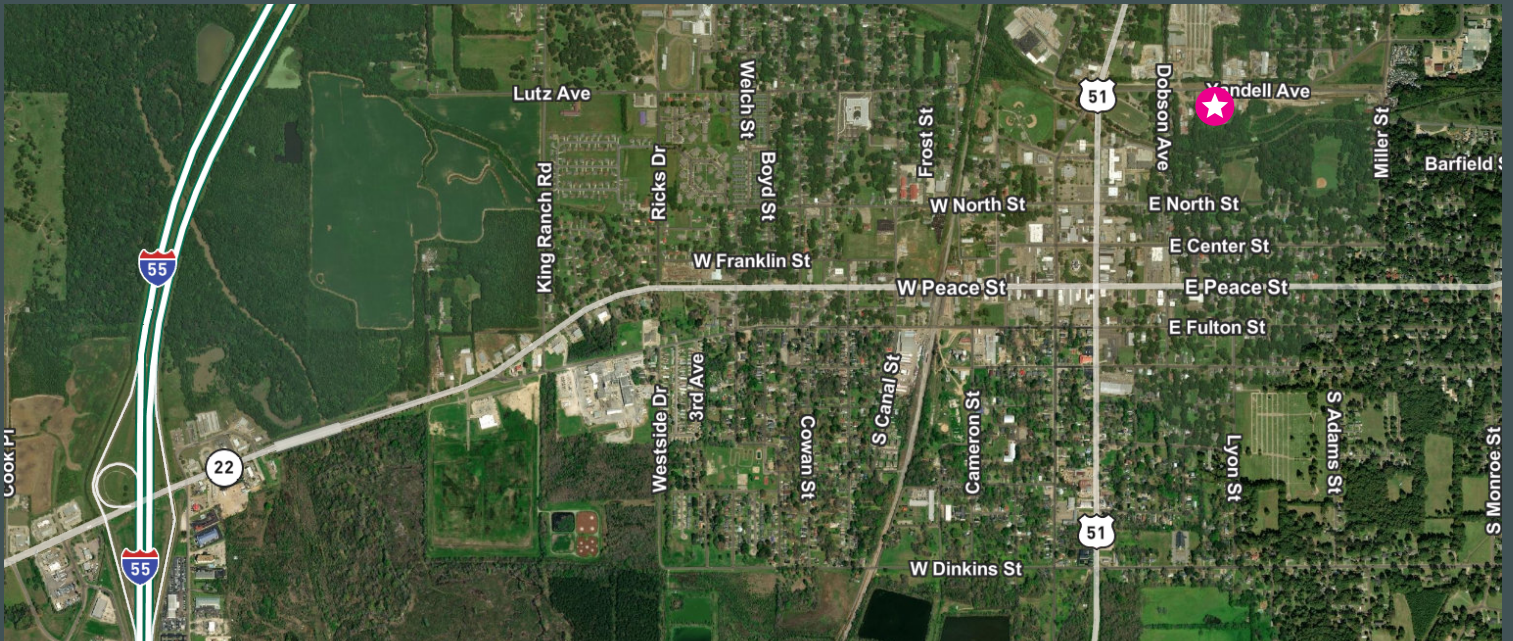
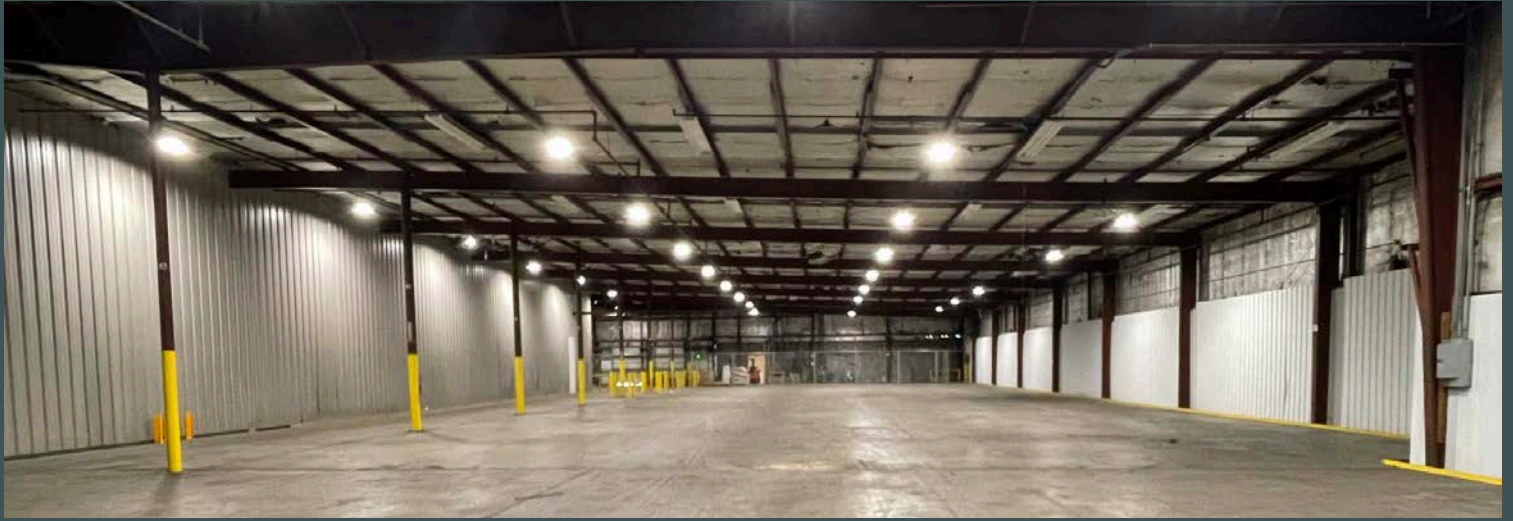
252 Yandell Avenue  
Canton, MS 39046  
[www.cbre.com/jackson](http://www.cbre.com/jackson)

±53,847 SF Available



## Property Features

- + ±53,847 sq. ft. available
- + ±2,000 sq. ft. office space
- + 24' clear height
- + (7) Seven dock high doors
- + 2.7 miles from Interstate 55
- + 3.9 miles from Nissan North America Plant
- + For Lease: \$4.50-\$5.50/SF NNN
- + Contact Broker for Sale information



## Contact Us

### Grant Ridgway, SIOR

First Vice President

+1 601 899 2801

grant.ridgway@cbre.com

### Guy Parker III, CCIM

First Vice President

+1 601 624 5590

guy.parker@cbre.com

© 2023 CBRE, Inc. All rights reserved. This information has been obtained from sources believed reliable, but has not been verified for accuracy or completeness. You should conduct a careful, independent investigation of the property and verify all information. Any reliance on this information is solely at your own risk. CBRE and the CBRE logo are service marks of CBRE, Inc. All other marks displayed on this document are the property of their respective owners, and the use of such logos does not imply any affiliation with or endorsement of CBRE. Photos herein are the property of their respective owners. Use of these images without the express written consent of the owner is prohibited.