




# Legacy Oaks

Medical Plaza

5360 - 5430 Fredericksburg Road | San Antonio, Texas



### Legacy Oaks

is a 7 building property situated on Fredericksburg Road, across from the Oak Hills Country Club.



### The Tower

has 93,906 rentable square feet with a grand entrance for patient drop off and modern lobby finishes give Legacy Oaks a refreshed image.



### Plaza Buildings

129,421 rentable square feet combined, two and three story buildings positioned in a colorful, landscaped setting

Get in Touch with  
Our Team:



Allie Sledge | 210.298.8512  
allie.sledge@streamrealty.com



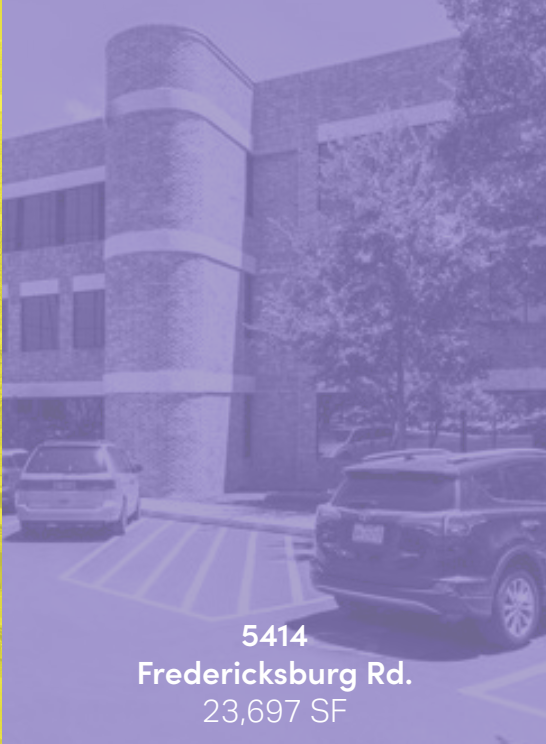
Valdrin Makolli | 210.298.8513  
valdrin.makolli@streamrealty.com



5430  
Fredericksburg Rd.  
96,641 SF



5410  
Fredericksburg Rd.  
45,877 SF



5414  
Fredericksburg Rd.  
23,697 SF

# Legacy Oaks Medical Plaza

is a seven building medical office complex located on Fredericksburg Road across from the Oak Hills Country Club and adjacent to the South Texas Medical Center. This location offers flexible floor plans to meet your medical needs and features

renovated exterior and interior finishes, upgraded mechanical systems, and beautifully landscaped grounds. **Legacy Oaks Medical Plaza** offers great visibility, signage opportunities and abundant parking for your growing medical practice.

C



5368  
Fredericksburg Rd.  
36,624 SF

D



5364  
Fredericksburg Rd.  
5,543 SF

E

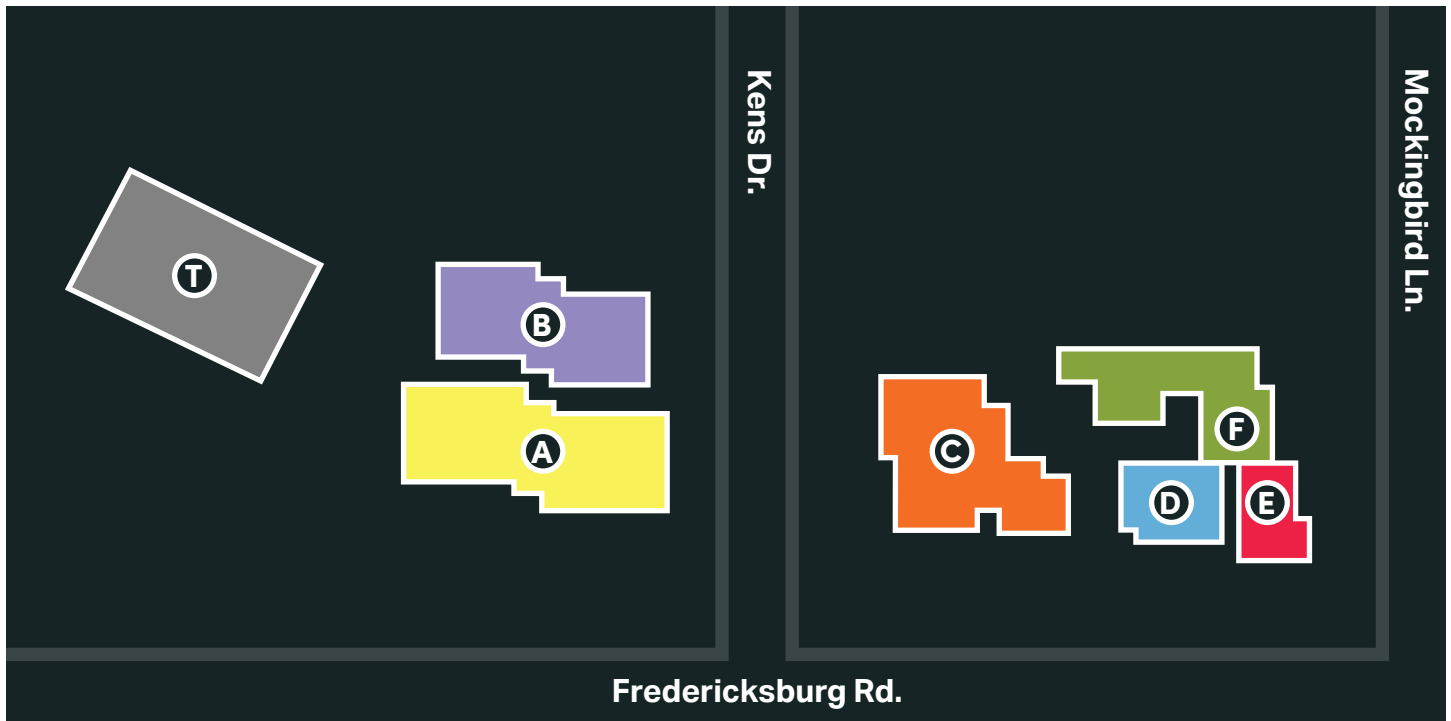


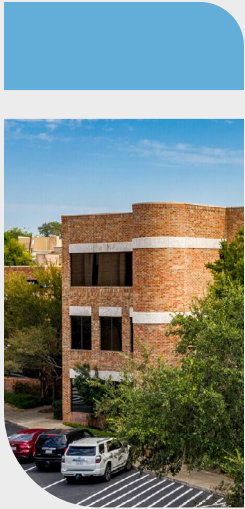
5360  
Fredericksburg Rd.  
3,680 SF

F



5372  
Fredericksburg Rd.  
15,595 SF





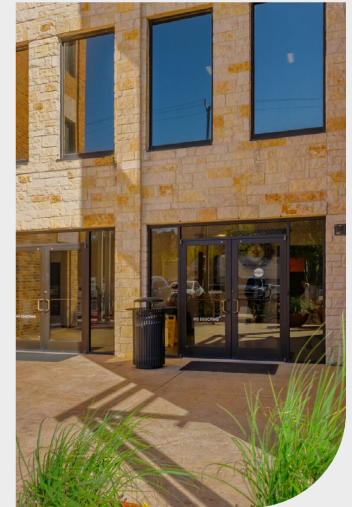
227,657  
Square feet

13.64  
Acres



7  
Buildings

1,300  
Linear feet of frontage  
on Fredericksburg Road



## About the Plaza

Conveniently situated less than a mile from the Loop 410 and Interstate 10 interchange, **Legacy Oaks Medical Plaza** benefits from exceptional accessibility. Fredericksburg Road, with over 37,000 vehicles passing daily, provides 1,300 linear feet of frontage, granting tenants excellent visibility and easy access for patients. The plaza

is supported by the nearby South Texas Medical Center's extensive network of 75 medical institutions, 12 hospitals, and 45 clinics and recent capital investments have enhanced the property's appearance. Ample surface parking and multiple curb cuts ensure convenient access for all tenants and visitors at no additional charge.





Adjacent to the  
**900-Acre**  
South Texas Medical Center

**75+**  
Medical Institutions

**12**  
Hospitals



**30,000+**  
Healthcare Professionals

## In the Area

The South Texas Medical Center in San Antonio is a major hub for healthcare, research, and education in the region. Spanning over 900 acres, it is home to a comprehensive array of medical institutions, including 12 hospitals, 45 specialized clinics, and numerous research and academic facilities. The center serves not only San Antonio

but also a large portion of South Texas, attracting patients from across the state and beyond.

Its convenient location near major highways like Loop 410 and Interstate 10, as well as its close ties to surrounding healthcare providers, make it a vital part of the San Antonio economy.





**T** Tower  
5430 Fredericksburg Rd.

| Level   | Suite     | Square Feet |
|---------|-----------|-------------|
| Level 3 | Suite 310 | 16,070 SF   |
| Level 6 | Suite 600 | 8,506 SF    |

**A** Building A  
5410 Fredericksburg Rd.

|         |           |          |
|---------|-----------|----------|
| Level 1 | Suite 102 | 3,708 SF |
| Level 1 | Suite 114 | 778 SF   |
| Level 3 | Suite 310 | 3,378 SF |

**B** Building B  
5414 Fredericksburg Rd.

|         |           |          |
|---------|-----------|----------|
| Level 2 | Suite 200 | 6,558 SF |
| Level 2 | Suite 240 | 603 SF   |
| Level 2 | Suite 265 | 1,867 SF |

**C** Building C  
5368 Fredericksburg Rd.

|         |           |          |
|---------|-----------|----------|
| Level 1 | Suite 112 | 3,738 SF |
| Level 2 | Suite 215 | 5,592 SF |
| Level 3 | Suite 300 | 5,937 SF |
| Level 3 | Suite 310 | 1,013 SF |
| Level 3 | Suite 312 | 1,818 SF |
| Level 4 | Suite 400 | 5,897 SF |

**D** Building D  
5364 Fredericksburg Rd.

|             |  |  |
|-------------|--|--|
| 100% Leased |  |  |
|-------------|--|--|

**E** Building E  
5360 Fredericksburg Rd.

|             |  |  |
|-------------|--|--|
| 100% Leased |  |  |
|-------------|--|--|

**F** Building F  
5372 Fredericksburg Rd.

|         |           |        |
|---------|-----------|--------|
| Level 1 | Suite 129 | 946 SF |
|---------|-----------|--------|





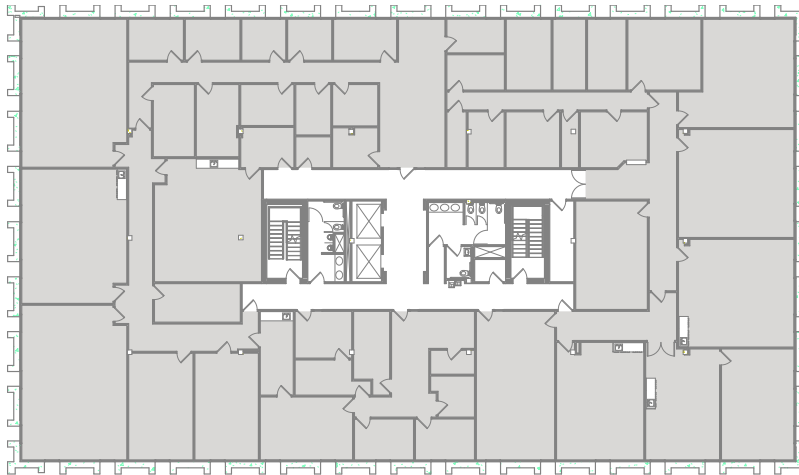
# Availabilities

5430 Fredericksburg Rd.



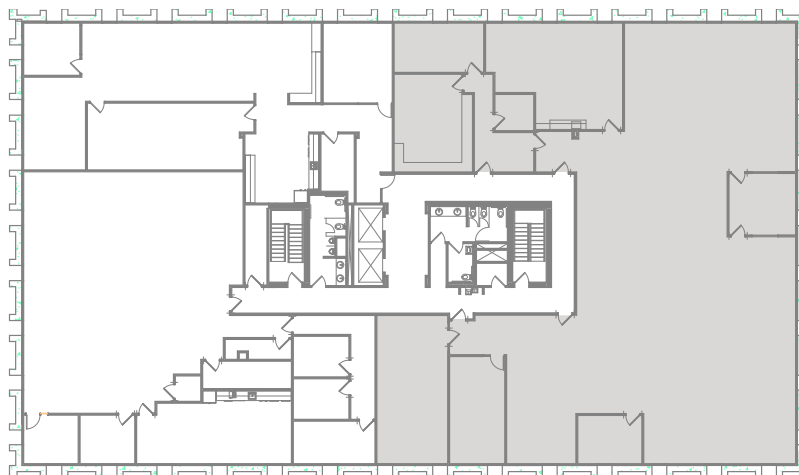
## Level 3

Suite 310 - 16,070 SF



## Level 6

Suite 600 - 8,506 SF



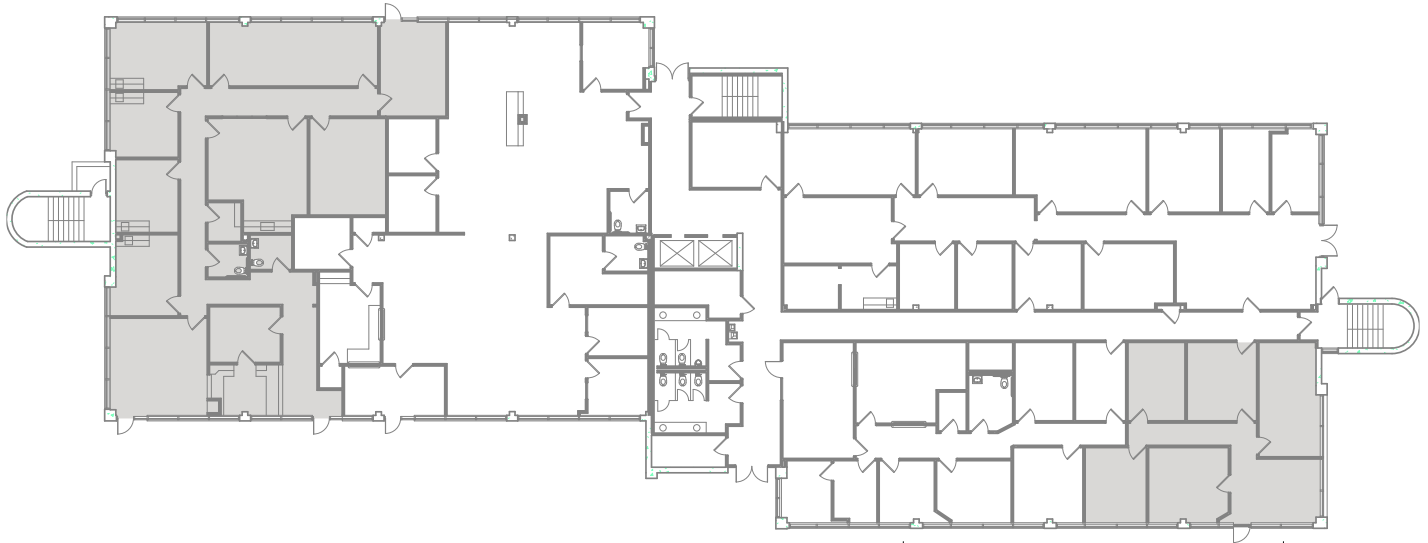


# Availabilities

5410 Fredericksburg Rd.

## Level 1

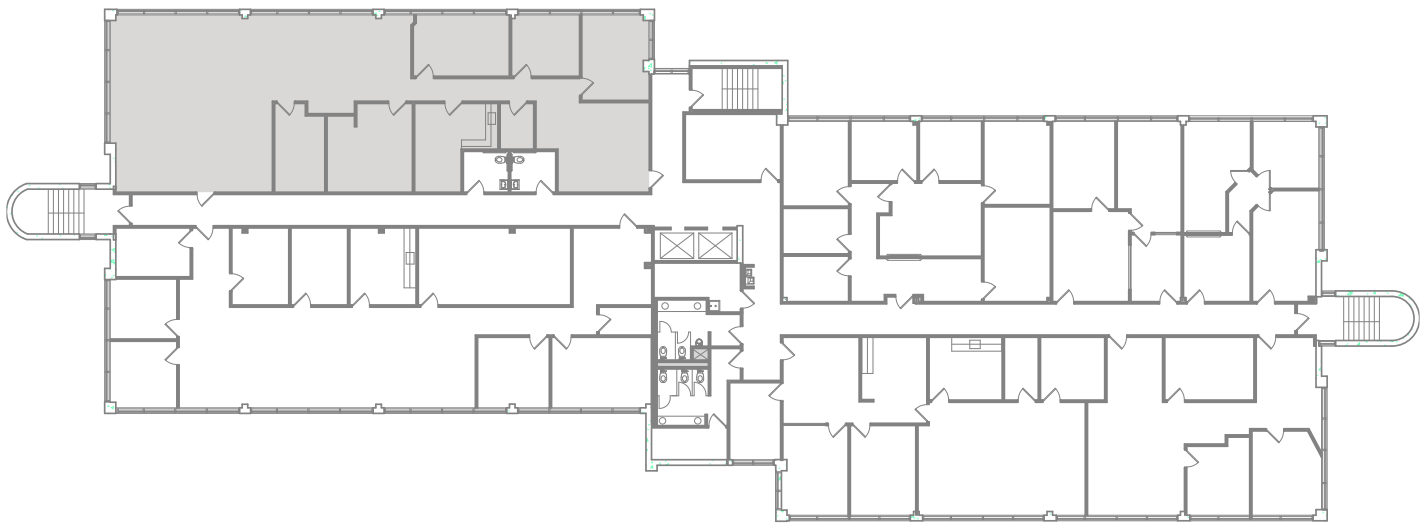
Suite 102 - 3,708 SF



Suite 114 - 778 SF

## Level 3

Suite 310 - 3,378 SF



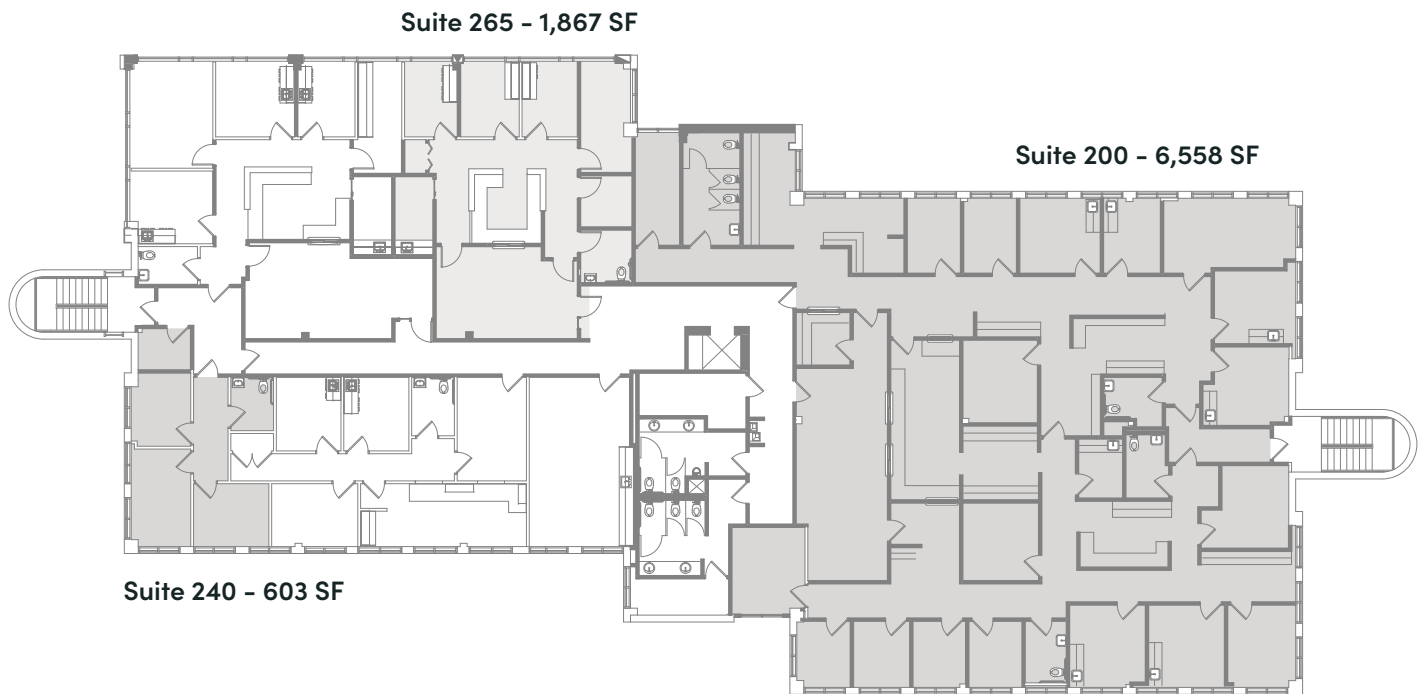




# Availabilities

5414 Fredericksburg Rd.

## Level 2





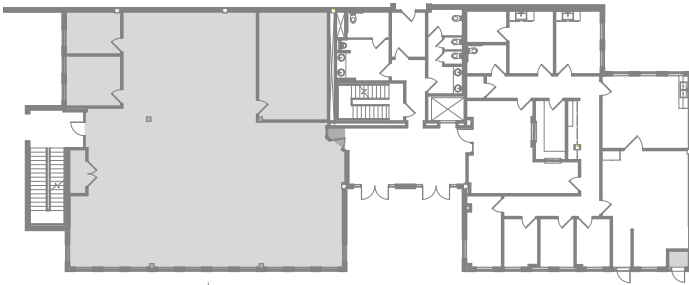
# Availabilities

5368 Fredericksburg Rd.

5368

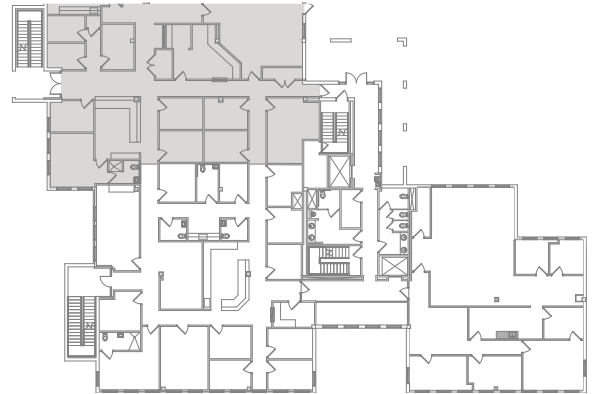
## Level 1

Suite 112 - 3,738 SF



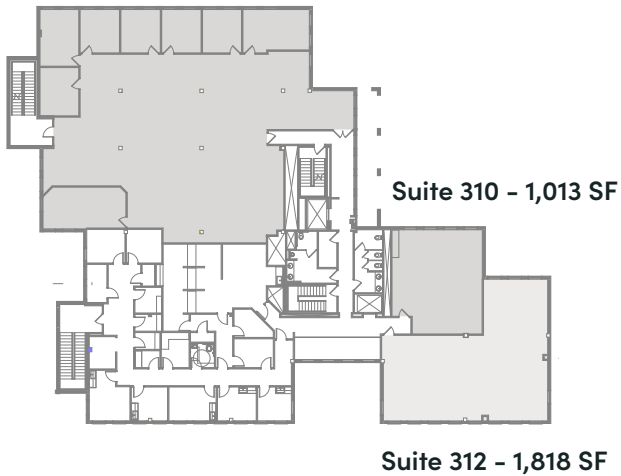
## Level 2

Suite 215 - 5,592 SF



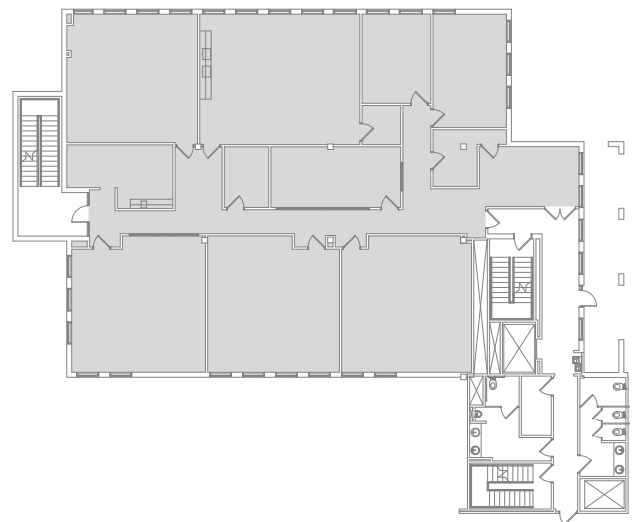
## Level 3

Suite 300 - 5,937 SF



## Level 4

Suite 400 - 5,897 SF



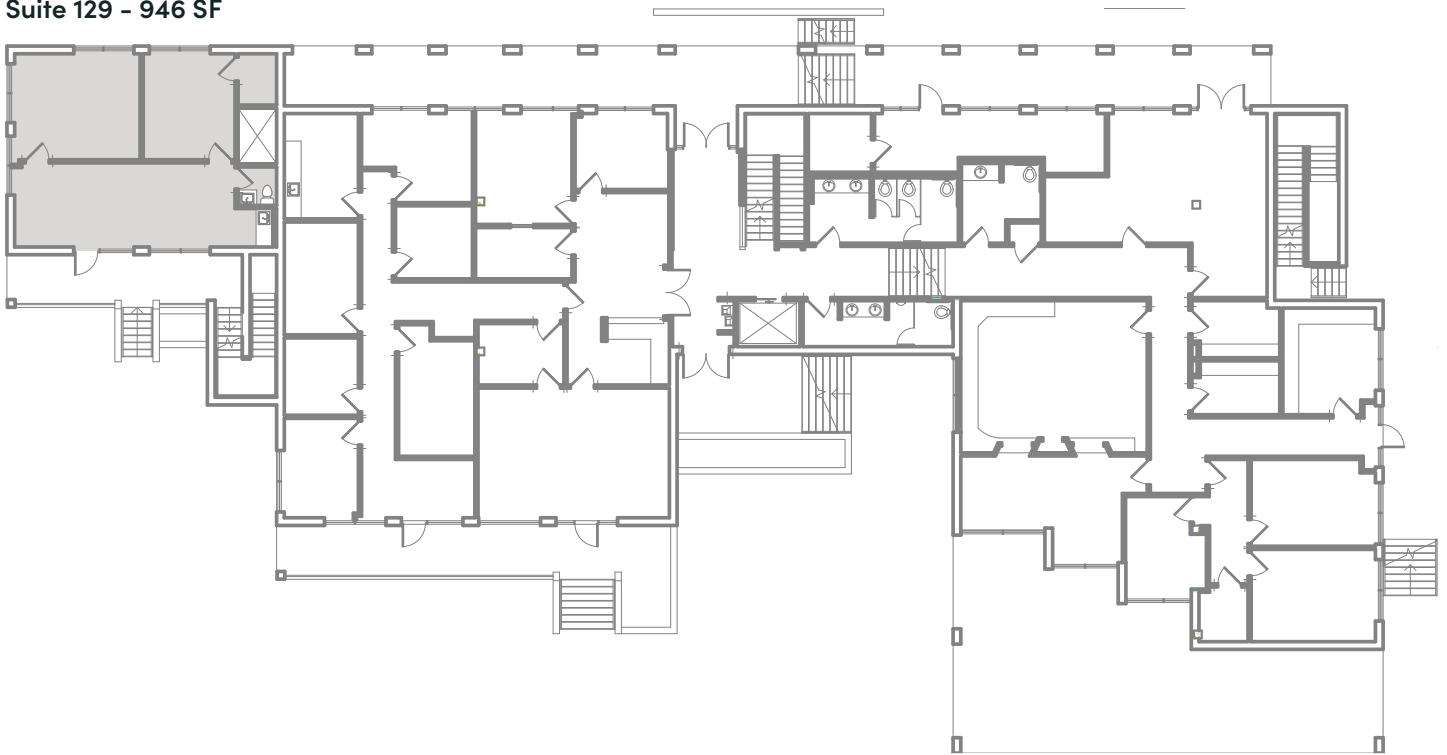


# Availabilities

5372 Fredericksburg Rd.

## Level 1

Suite 129 - 946 SF



## Access/Routes

**From I-10:** Exit at Medical Drive, head west, then turn left (south) onto Fredericksburg Road. Legacy Oaks Medical Plaza will be on your left.

**From 410:** Take the Fredericksburg Road exit, drive north, and the property will be on your right, about one mile from 410.

**From Callaghan Road:** Turn north onto Fredericksburg Road to reach the property.

**From Babcock Road** (South Texas Medical Center area):

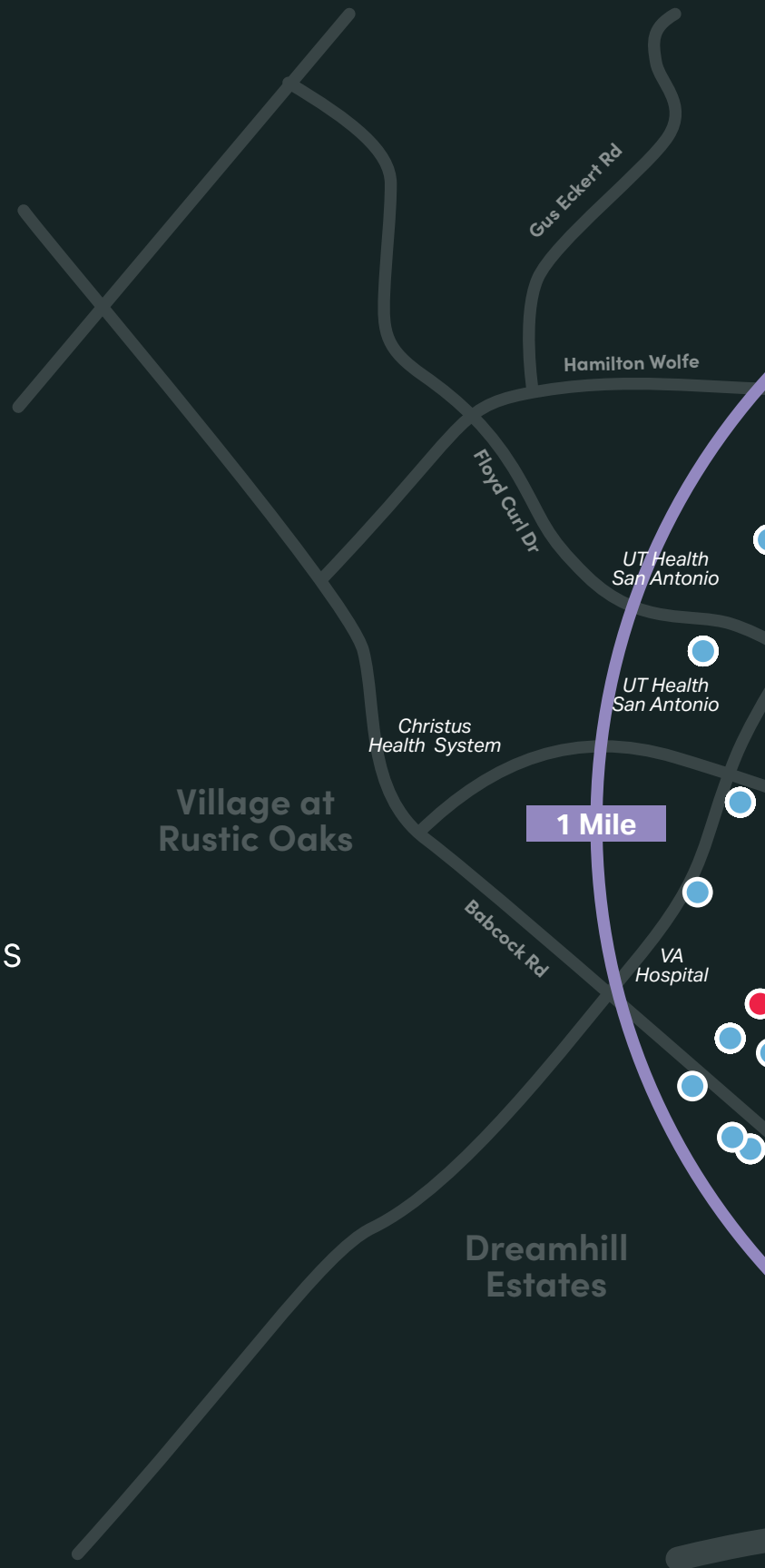
- **Option 1:** Take Louis Pasteur Drive to Fredericksburg Road, then turn right.
- **Option 2:** Take Callaghan Road to Fredericksburg Road, then turn left.

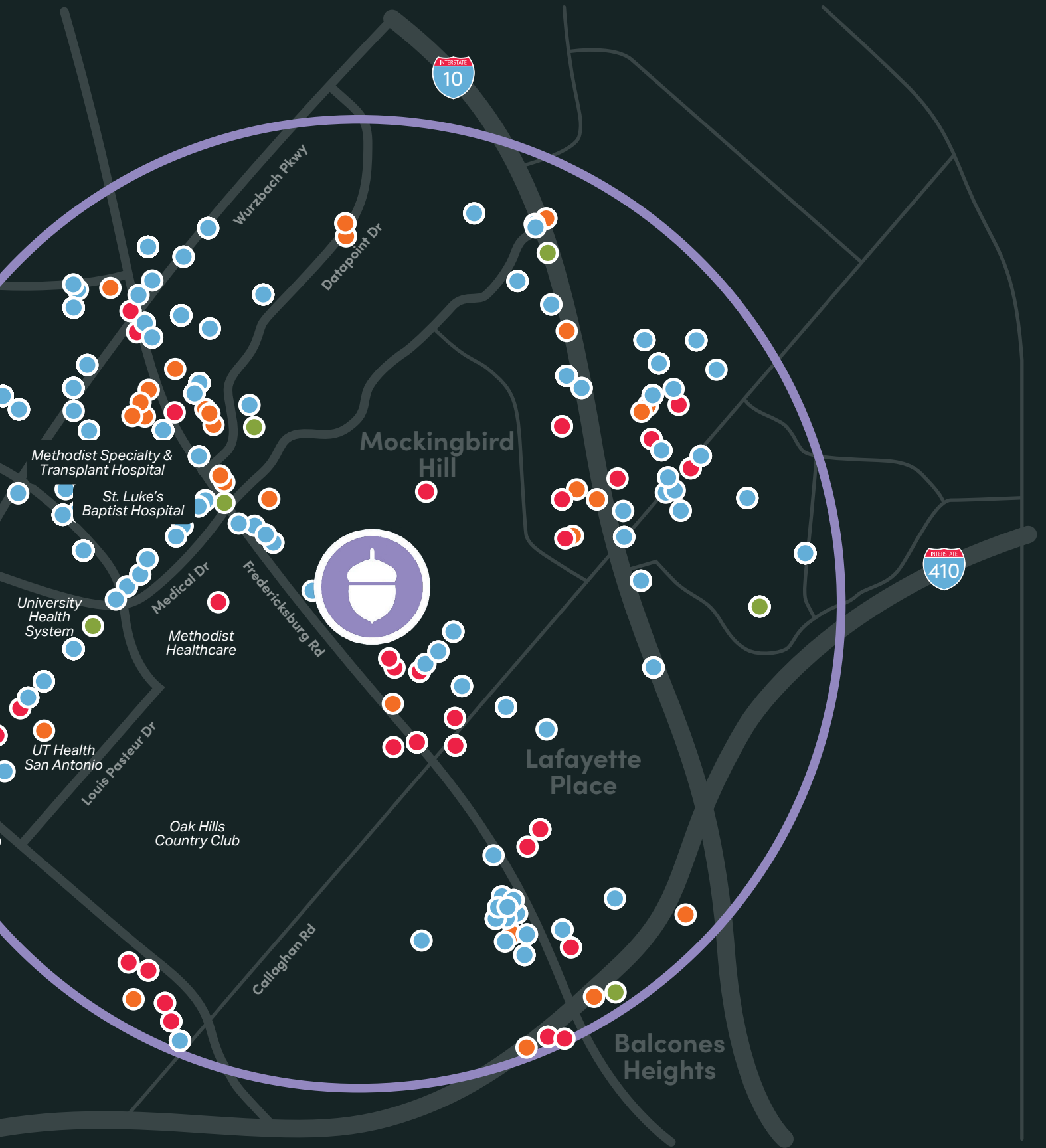
 Health Facilities & Offices  
541

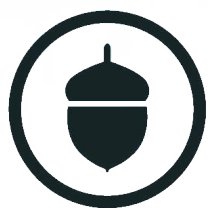
 Retail  
111

 Eating Places  
87

 Hotels & Motels  
8







# Legacy Oaks

Medical Plaza

5360 - 5430 Fredericksburg Road | San Antonio, Texas

Copyright © 2024 Stream Realty Partners, All rights reserved.

The information contained herein was obtained from sources believed reliable; however, Stream Realty Partners, L.P. make no guarantees, warranties, or representations as to the completeness or accuracy thereof. The presentation of this property is submitted subject to errors, change of price, or conditions, prior sale or lease, or withdrawal without notice.

Get in Touch with  
Our Team:



Allie Sledge | 210.298.8512  
allie.sledge@streamrealty.com



Valdrin Makolli | 210.298.8513  
valdrin.makolli@streamrealty.com