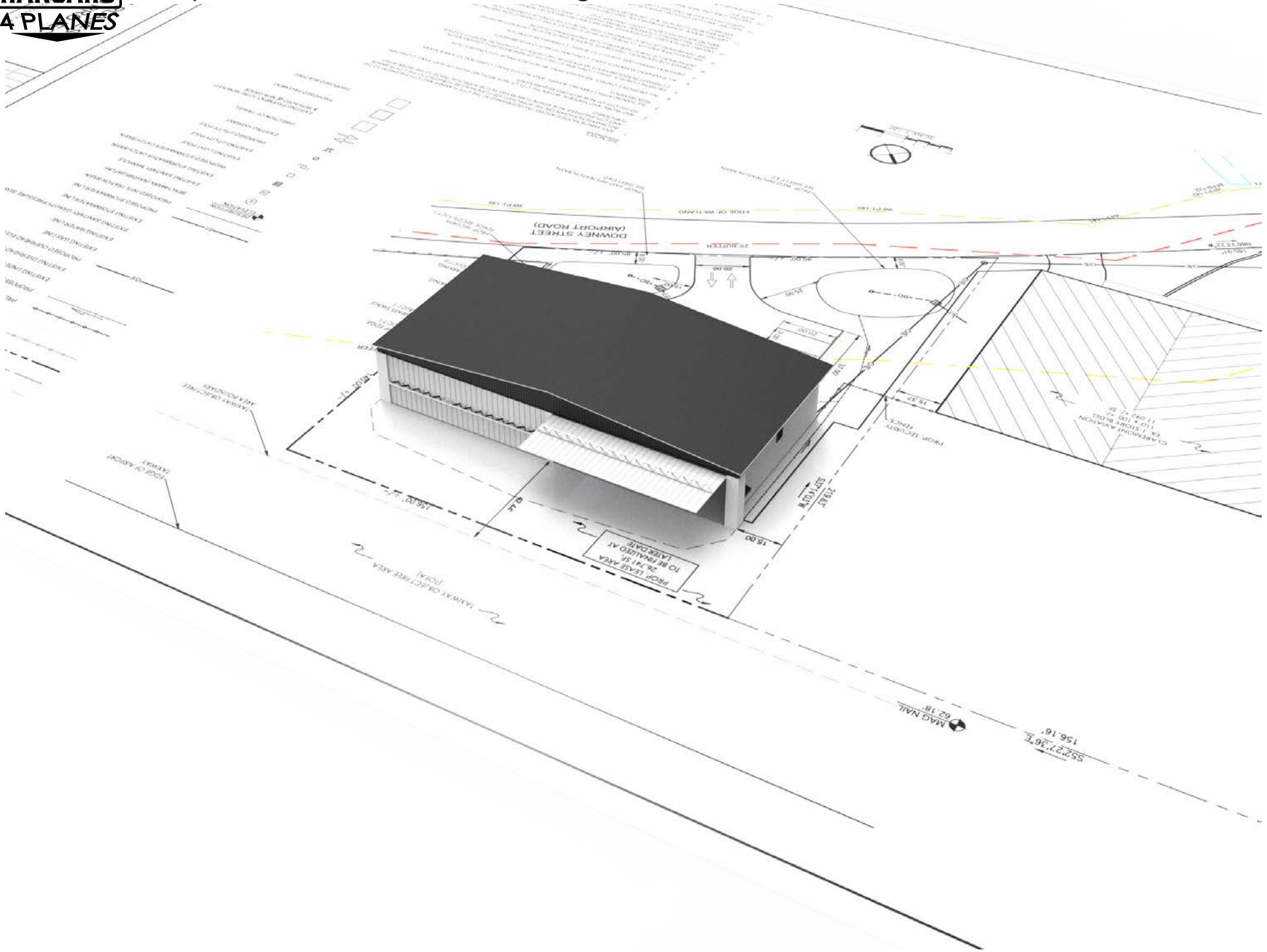




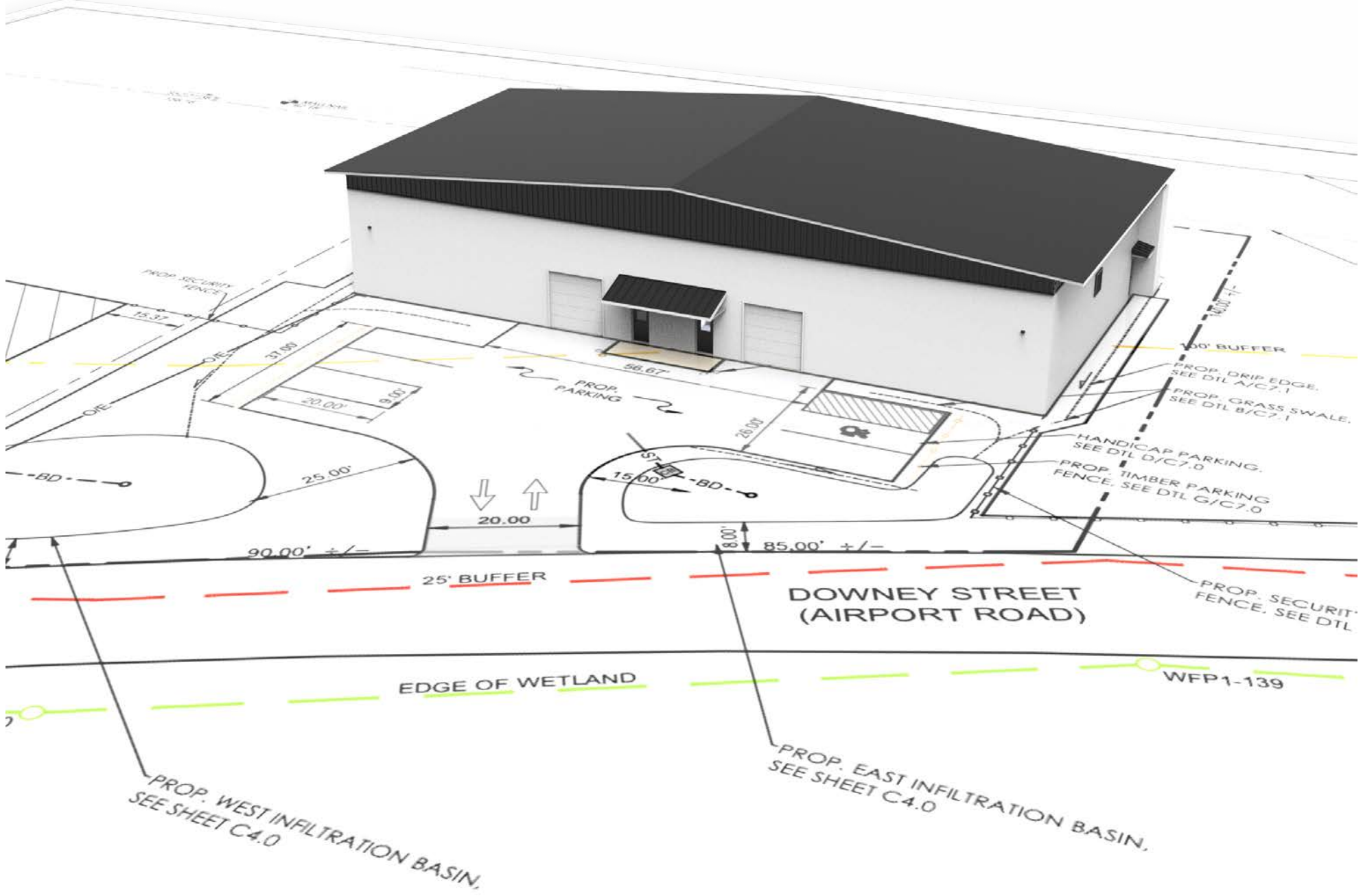


Airport Rd. 130'-8" x 60' Hangar





Airport Rd. 130'-8" x 60' Hangar



PROP. WEST INFILTRATION BASIN,
SEE SHEET C4.0

PROP. EAST INFILTRATION BASIN,
SEE SHEET C4.0

WFP1-139

DOWNEY STREET
(AIRPORT ROAD)

EDGE OF WETLAND

25' BUFFER

PROP. SECURITY FENCE, SEE DTL

HANDICAP PARKING, SEE DTL D/C7.0
PROP. TIMBER PARKING FENCE, SEE DTL G/C7.0

PROP. DRIP EDGE, SEE DTL A/C7.1
PROP. GRASS SWALE, SEE DTL B/C7.1

130' BUFFER

PROP. PARKING

PROP. SECURITY FENCE

90.00' +/-

85.00' +/-

20.00

15.00

8.00

56.67

25.00

31.95

20.00

9.95

15.37

O/E

O/E

BD

S

BD

7



PILATUS PC24 + CIRRUS SR22 + RANGER ROVER FITMENT





PILATUS PC24 + CIRRUS SR22 + RANGER ROVER FITMENT



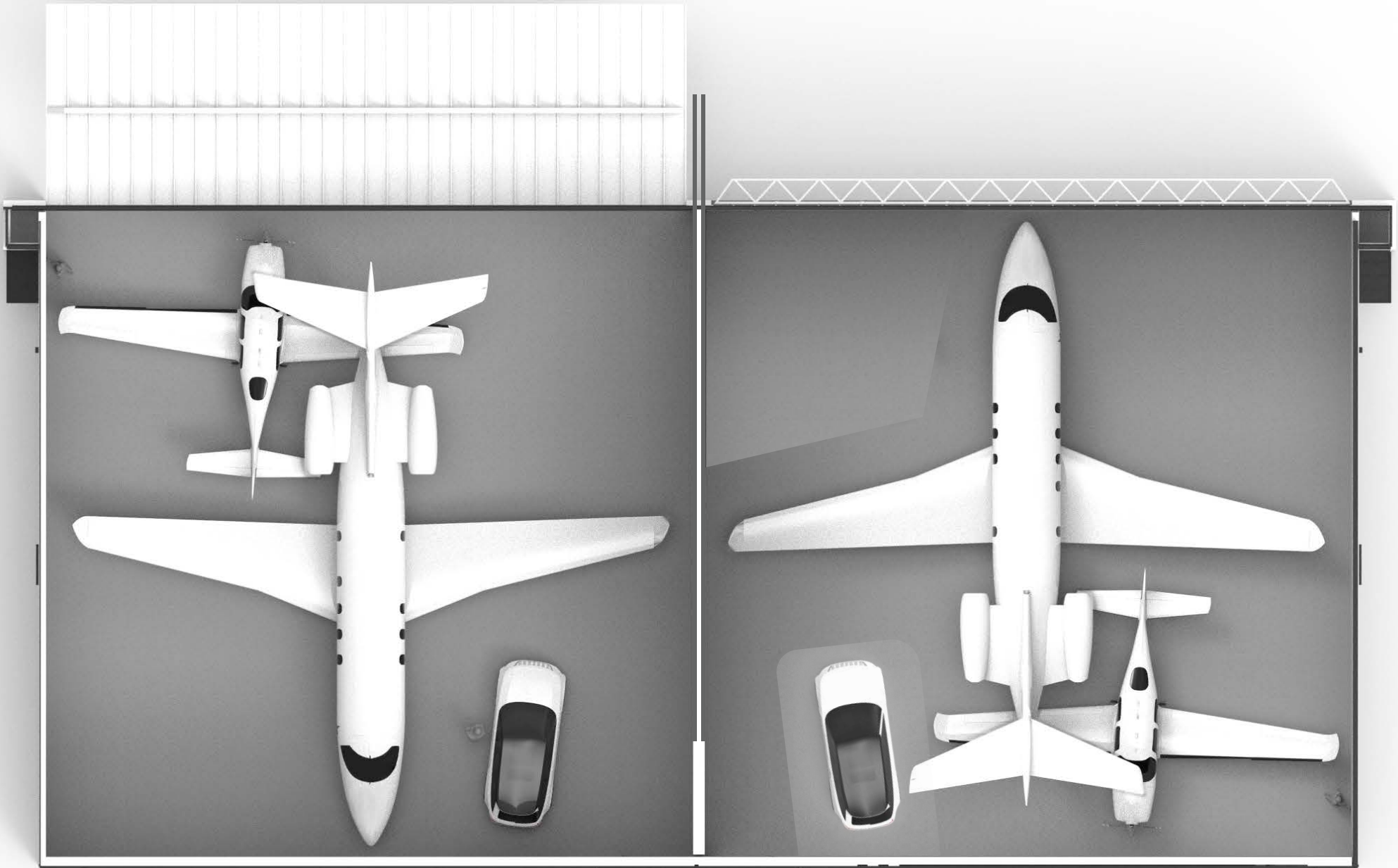


PILATUS PC24 + CIRRUS SR22 + RANGER ROVER FITMENT





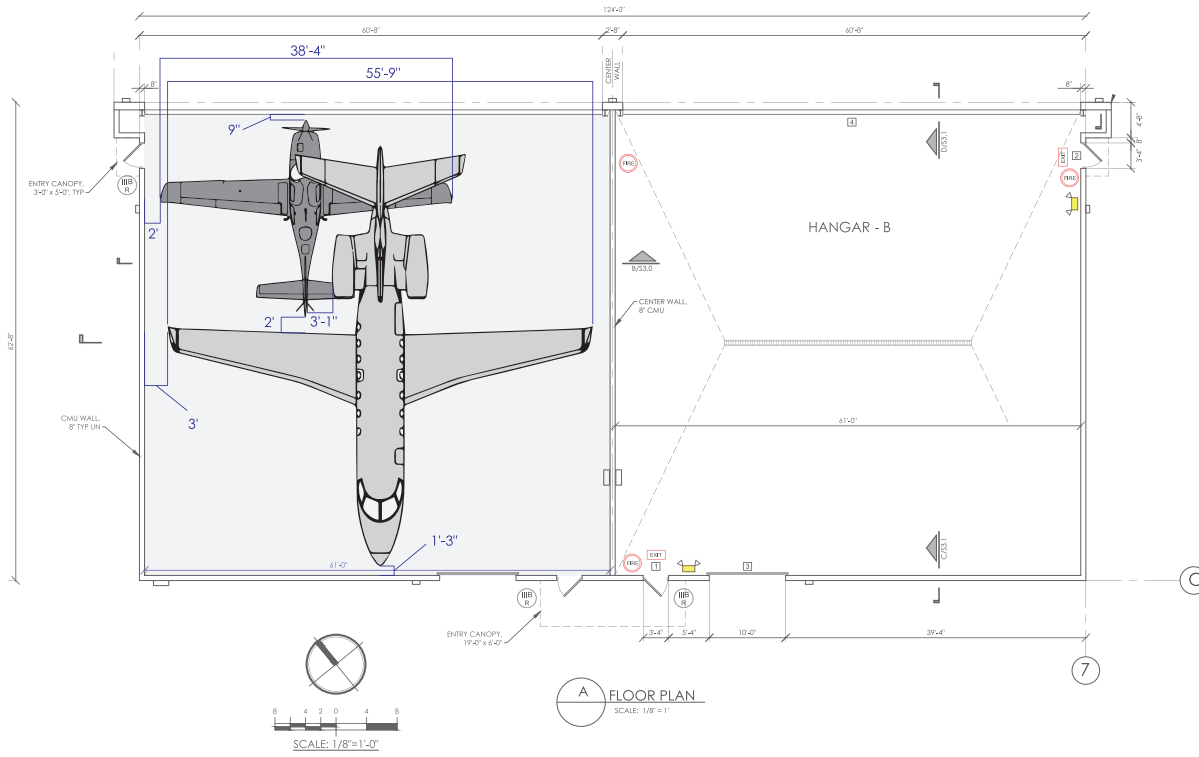
PILATUS PC24 + CIRRUS SR22 + RANGER ROVER FITMENT



Option A

Option B

TOP PROFILE



SIDE PROFILE



**Proper & O'Leary
Engineering, d.p.c.**
STRUCTURAL • CIVIL CONSULTANTS
1915 5th Avenue, PO Box 246
Troy, NY 12180
518.610.8331 www.po-eng.com

IT IS A VIOLATION OF THE NEW YORK STATE EDUCATION LAW FOR ANY PERSON TO ALTER THESE PLANS, SPECIFICATIONS, OR REPORTS IN ANY WAY, UNLESS HE IS ACTING UNDER THE DIRECTION OF A LICENSED PROFESSIONAL ENGINEER.

PROJECT # 21153
DATE 08/10/2022
DRAWN BY: DBP APPROVED BY: DBP

REVISIONS:	
DATE	DESCRIPTION
11-9-22	REVISED PER PB COMMENTS
1-24-23	REVISED PER CONCOM
6-1-23	REVISED PER DPJ COMMENT
2-14-24	BLDG FOOTPRINT UPDATED

**HANGARS 4 PLANES
AIRPORT ROAD PROJECT**

BRISTOL COUNTY, MASSACHUSETTS

C/O NEW BEDFORD

FLOOR PLAN

A1.1