



Keegan & Coppin
COMPANY, INC.

FOR LEASE

555 PETALUMA AVENUE
SEBASTOPOL, CA

**MEDICAL/PROFESSIONAL SPACE
FOR LEASE**



Go beyond broker.

REPRESENTED BY:

PETER BRICENO, SREA

LIC # 01885655 (707) 528-1400, EXT 255

PBRICENO@KEEGANCOPPIN.COM



Keegan & Coppin
COMPANY, INC.



555 PETALUMA AVENUE
SEBASTOPOL, CA

**MEDICAL/
PROFESSIONAL
SPACE FOR
LEASE**

PROPERTY DETAILS

PROPERTY HIGHLIGHTS

- +/- 1,230 sf
- Well maintained medical/professional space
- High ceilings and great light
- Highly efficient floor plan
- Five total private rooms; Four with in-room sinks
- Great for many medical or professional users

PROPERTY INFORMATION

Lease Rate

\$2.25 per sq ft

Lease Term

Negotiable

Parking

On-Site Parking

Zoning

BP - Business Park

Keegan & Coppin Co., Inc.
1355 N Dutton Ave., Suite 100
Santa Rosa, CA 95401
keegancoppin.com
P: (707) 528-1400

REPRESENTED BY:

PETER BRICENO, SREA
LIC # 01885655 (707) 528-1400, EXT 255
pbriceno@keegancoppin.com



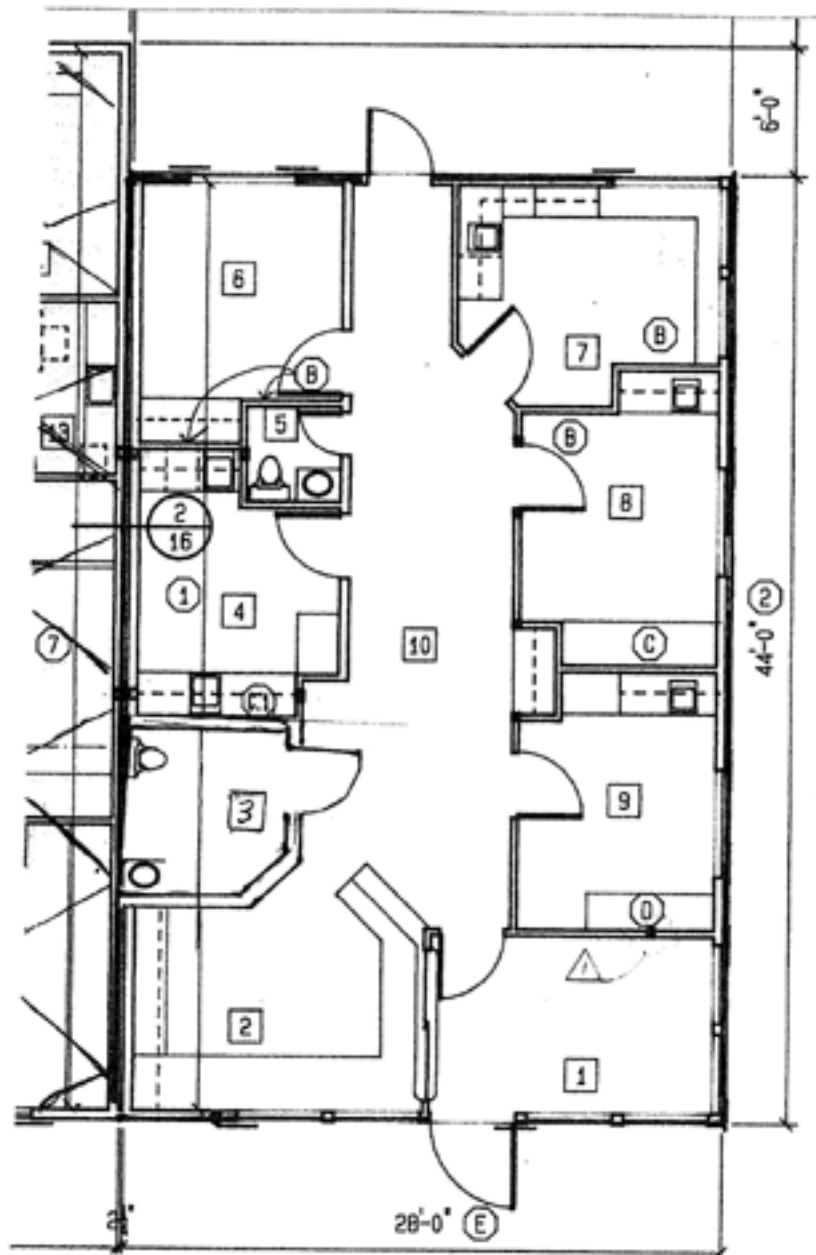
Keegan & Coppin
COMPANY, INC.



555 PETALUMA AVENUE
SEBASTOPOL, CA

**MEDICAL/
PROFESSIONAL
SPACE FOR
LEASE**

FLOOR PLAN



PRESENTED BY:

PETER BRICENO, SREA
LIC # 01885655 (707) 528-1400, EXT 255
PBRICENO@KEEGANCOPPIN.COM

The above information, while not guaranteed, has been secured from sources we believe to be reliable. Submitted subject to error, change or withdrawal. An interested party should verify the status of the property and the information herein.



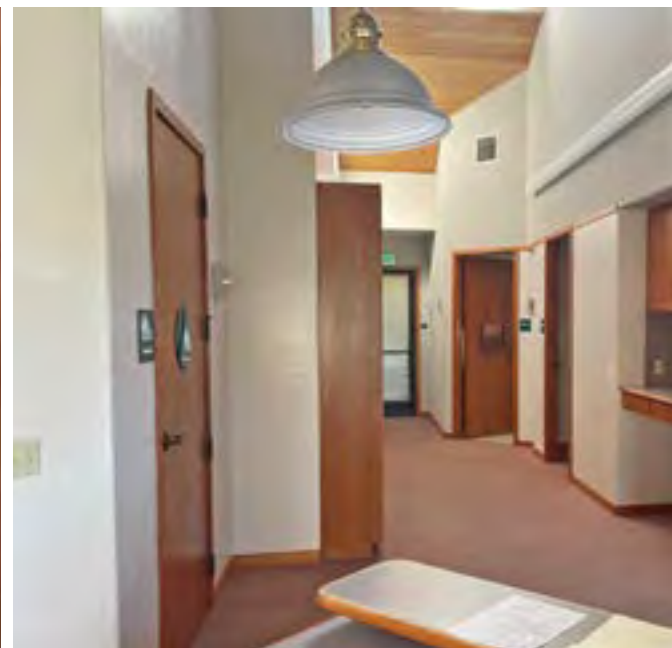
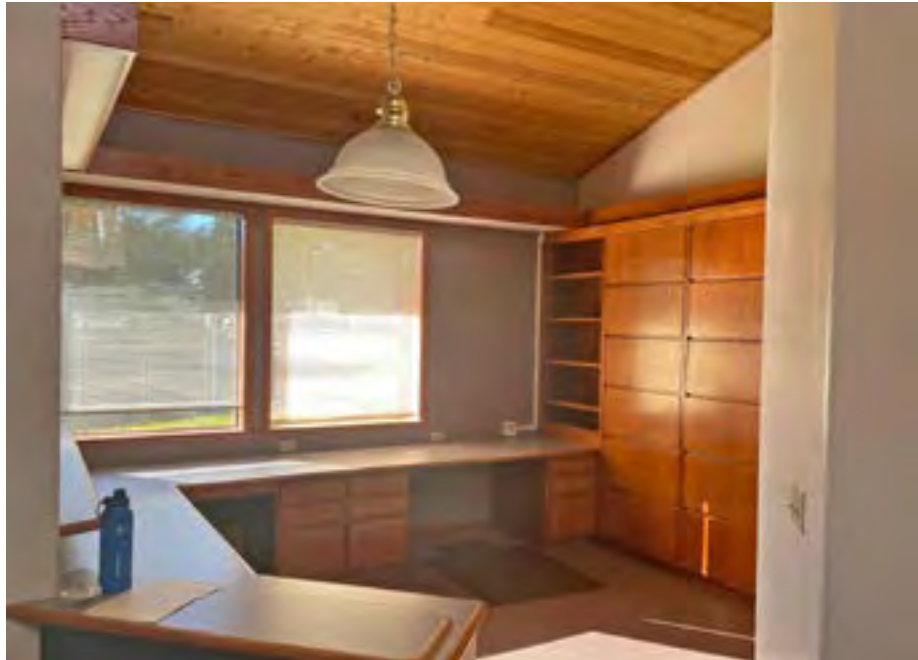
Keegan & Coppin
COMPANY, INC.



555 PETALUMA AVENUE
SEBASTOPOL, CA

**MEDICAL/
PROFESSIONAL
SPACE FOR
LEASE**

PROPERTY PHOTOS



PRESENTED BY:

PETER BRICENO, SREA
LIC # 01885655 (707) 528-1400, EXT 255
PBRICENO@KEEGANCOPPIN.COM

The above information, while not guaranteed, has been secured from sources we believe to be reliable. Submitted subject to error, change or withdrawal. An interested party should verify the status of the property and the information herein.



Keegan & Coppin
COMPANY, INC.



555 PETALUMA AVENUE
SEBASTOPOL, CA

**MEDICAL/
PROFESSIONAL
SPACE FOR
LEASE**

VICINITY AERIAL



PRESENTED BY:

PETER BRICENO, SREA
LIC # 01885655 (707) 528-1400, EXT 255
PBRICENO@KEEGANCOPPIN.COM

The above information, while not guaranteed, has been secured from sources we believe to be reliable. Submitted subject to error, change or withdrawal. An interested party should verify the status of the property and the information herein.