

# LAND FOR SALE - 4.5 +/- Acres

Newnan, GA 30265



## ZONING:

**CC:** Cedar Creek

**Price:** \$400,000 / Acre

**GAMLS #:** 21038850

**4.5 +/- Acres**

**Near the Arbor Springs  
Village Center**



## PROPERTY DETAILS

- Perfect Site for Professional Offices, Drug Store, Financial Services.
- Located in northern portion of Coweta County, near Arbor Springs golf course community, Lake Redwine and Serenbe.
- Site is located in the Quality Development Corridor Overlay District near Exit 51, Interstate 85.
- High visibility on State Highway 29 with average annual 14,700 daily traffic count.

**BERKSHIRE  
HATHAWAY**  
HOMESERVICES

GEORGIA  
PROPERTIES

**Crystal Bashakes, REALTOR®**

Cell: 678-776-2280

Office: 770-487-8300

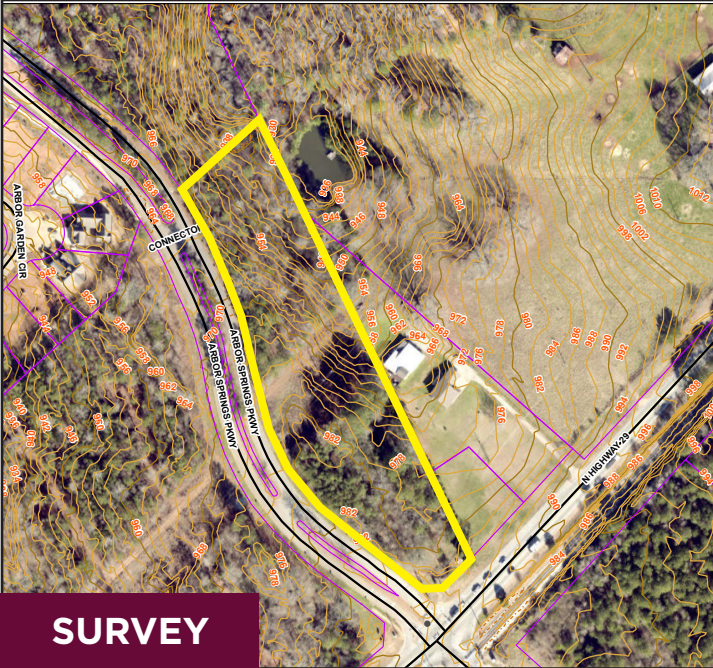
[www.crystalbashakes.bhhsgeorgia.com](http://www.crystalbashakes.bhhsgeorgia.com)

[crystal.bashakes@bhhsgeorgia.com](mailto:crystal.bashakes@bhhsgeorgia.com)

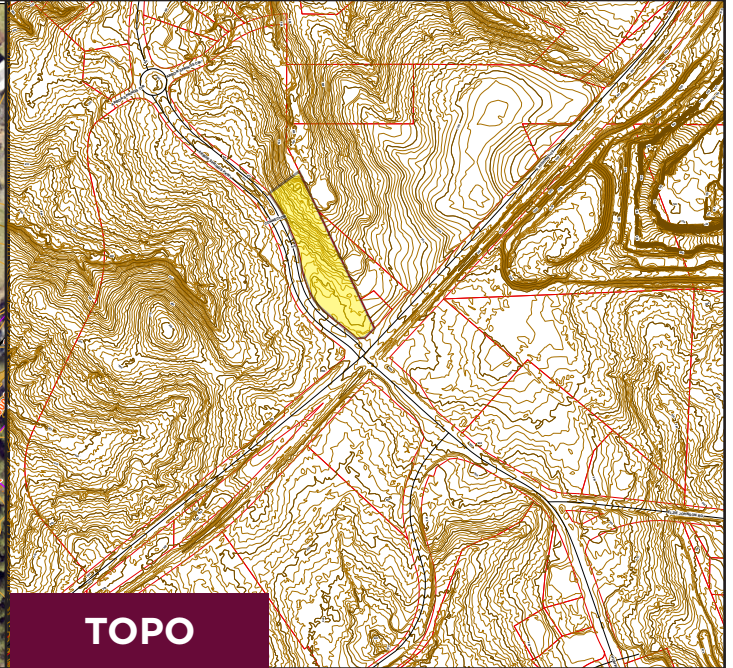


# LAND FOR SALE - 4.5 +/- Acres - Newnan

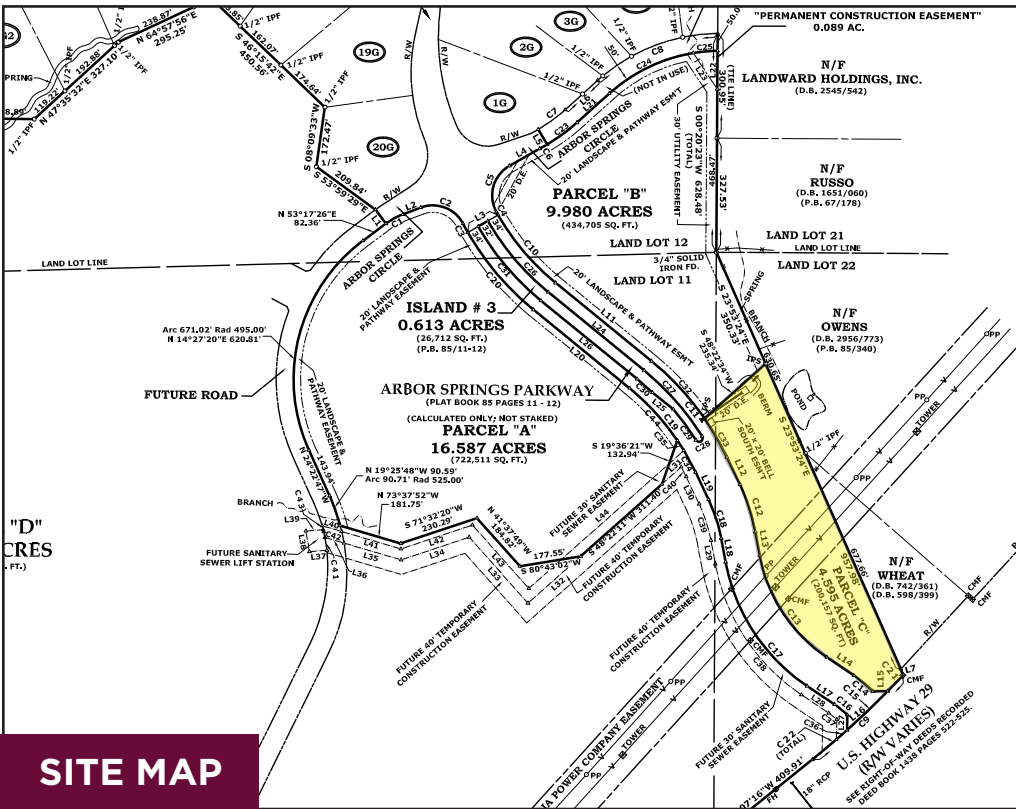
## Map and Survey



**SURVEY**



**TOPO**



**SITE MAP**

### DISTANCE TO SITE (MILES)

**I-85:**  
1 Mile

**I-285 (via I-85):**  
15 Miles

**Downtown Atlanta:**  
30 +/- Miles

**Hartsfield-Jackson  
Atlanta Airport:**  
22 Miles

**Downtown Newnan:**  
10 Miles

**BERKSHIRE HATHAWAY** | **GEORGIA PROPERTIES**  
HOMESERVICES

**Crystal Bashakes, REALTOR®**  
Cell: 678-776-2280 | Office: 770-487-8300

©2023 BHH Affiliates, LLC. An independently operated subsidiary of HomeServices of America, Inc., a Berkshire Hathaway affiliate, and a franchisee of BHH Affiliates, LLC. Berkshire Hathaway HomeServices and the Berkshire Hathaway HomeServices symbol are registered service marks of Columbia Insurance Company, a Berkshire Hathaway affiliate. Information has been secured from sources we deem reliable, but we make no representations or warranties, expressed or implied as to the accuracy of the information.

Equal Housing Opportunity.



# LAND FOR SALE - 4.5 +/- Acres - Newnan

*Surrounding Area*



- Neighboring property address: 4190 N Highway 29, Newnan GA 30265
- Coweta County Water & Sewage Authority
- Population of Coweta County is 151,481 ([choosecoweta.com](http://choosecoweta.com))
- At the corner of Arbor Springs Parkway and US Highway 29

**BERKSHIRE HATHAWAY** | GEORGIA PROPERTIES  
HOMESERVICES

**Crystal Bashakes, REALTOR®**  
Cell: 678-776-2280 | Office: 770-487-8300