



# Jagalchi

The Premier Korean Anchor  
Luxury Market Eatery



Presented by California Bridge Realty  
[www.calbridgerg.com](http://www.calbridgerg.com)

# Discover Jagalchi

Jagalchi is a 75,000 sq. ft. Korean anchor market located in Daly City's former JCPenney space. With 10,000–20,000 daily visitors, it's one of the Bay Area's top-performing retail destinations.

Anchored by POGU, a Michelin 1-star Korean restaurant, and featuring brands like Basquia (gluten-free bakery) and K-Beauty Cosmetics, Jagalchi blends upscale dining, specialty retail, and Korean culture in one dynamic space.



Presented by California Bridge Realty

[www.calbridgerg.com](http://www.calbridgerg.com)



# Jagalchi Market Highlights:

- Size: 75,000 sq. ft.
- Designed by **Gensler**
- Previous Tenant : JCPenney
- Daily Foot Traffic : 10,000–15,000 visitors
- POGU, Michelin-Starred Korean Dining
- Basquia : Artisan Gluten-Free Bakery



Presented by California Bridge Realty

[www.calbridgerg.com](http://www.calbridgerg.com)

# Jagalchi

## Mega Mart's Flagship Brand

Jagalchi is the new signature brand by Mega Mart, offering a luxury Korean market and culinary experience rooted in authentic culture and premium quality.

Mega Mart, backed by its parent company Nongshim, is a leading Korean grocery chain with several market locations across the U.S., including:

- Atlanta, GA
- Sunnyvale, CA
- Fremont, CA
- Palo Alto, CA – Opening Q3 2025
- Dublin, CA – Opening Q4 2025

The Mega Mart logo consists of the words "MEGA MART" in a bold, red, sans-serif font, centered within a white rectangular box.

With Jagalchi, Mega Mart continues to expand its vision of bringing Korea's finest food and retail culture to global communities.

Presented by California Bridge Realty

[www.calbridgerg.com](http://www.calbridgerg.com)

# Currently Located at Daly city Serramonte Center



**Located at Serramonte Center as a proud anchor tenant, Mega Mart brings the vibrant taste of Korea to one of Daly City's busiest shopping destinations.**

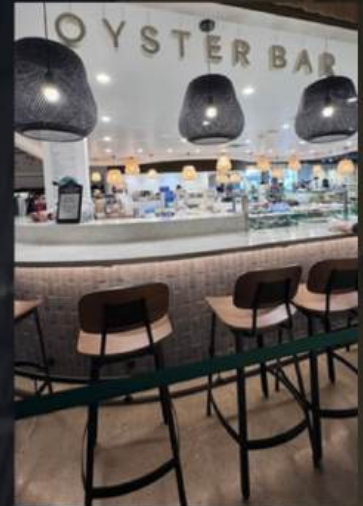
Presented by California Bridge Realty

[www.calbridger.com](http://www.calbridger.com)



# Luxury Seafood Center

Providing premium selections for every customer, every day.



## Premium Seafood Market The Heart of Jagalchi

Jagalchi features a vibrant seafood section inspired by the world-famous Jagalchi Market in Busan. Backed by Mega Mart's global sourcing network, we provide fresh, high-quality seafood and sushi at competitive prices, delivered daily. From live fish tanks and expertly prepared sashimi to ready-to-enjoy premium sushi, our market brings the authentic taste of Korea's coastal cuisine to California.

Presented by California Bridge Realty  
[www.calbridgerg.com](http://www.calbridgerg.com)



# POGU



## Michelin-Starred Korean Dining

POGU offers a refined take on authentic Korean cuisine, delivering dishes that are both healthy and full of flavor. Using only the freshest ingredients, POGU showcases the depth of traditional Korean cooking with a modern twist. Now featuring a premium oyster bar, POGU brings the best of land and sea together — from house-made broths to freshly shucked oysters and sizzling Korean grills, every dish is crafted with care.

Experience the true taste of Korea in a sophisticated, modern setting.

Presented by California Bridge Realty

[www.calbridgerg.com](http://www.calbridgerg.com)



# RICE BAKERY BASQUIA

## Artisan Gluten-Free Bakery



Basquia specializes in gluten-free bread made from premium rice flour, offering a delicious alternative that's both healthy and soft in texture. Free from wheat but full of flavor, each loaf is carefully crafted to be light, moist, and satisfying. Perfect for anyone seeking a better for you bread option without compromising taste. Experience the next generation of Korean-inspired baking at Basquia.



# Premium Korean Food Court Experience



Experience authentic Korean flavors at the Mega Mart Luxury Food Court, where tradition meets quality. Enjoy a delicious variety of freshly prepared dishes, including:

- Gimbap (Korean Rice Rolls)
- Korean Pancakes (Jeon)
- Mandu (Dumplings)
- Rice Cakes (Tteok)
- Spicy Rice Cakes (Tteokbokki)
- House-Made Kimchi

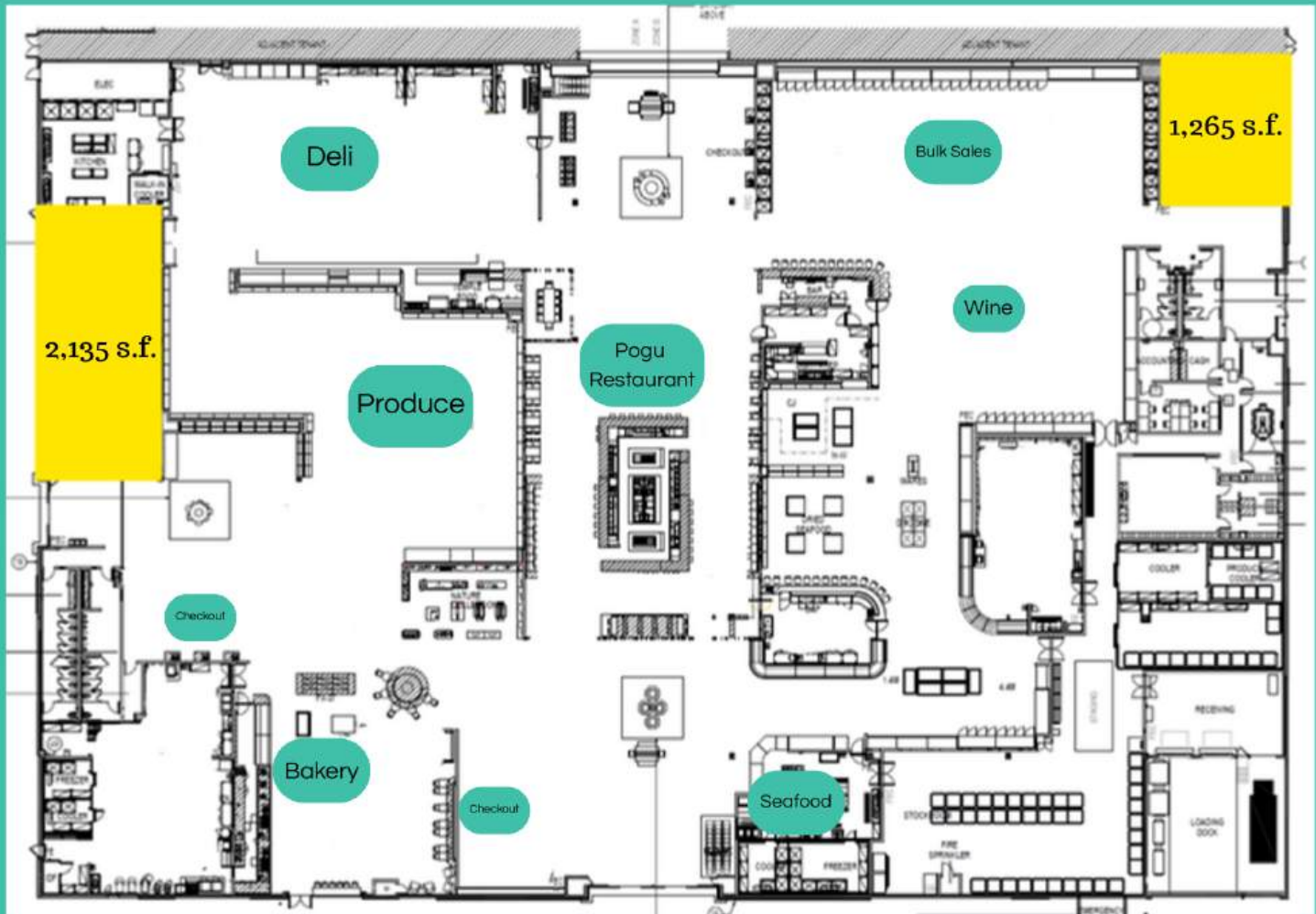
Crafted with premium ingredients and time-honored recipes, every bite offers a true taste of Korea — perfect for a quick meal or a flavorful experience with family and friends.

Presented by California Bridge Realty

[www.calbridgerg.com](http://www.calbridgerg.com)

# Available Sublease Spaces

2,135 SF & 1,265 SF



## Sublease Terms

- Base Rent: \$84.00 / SF +NNN
- Available Spaces: 2,135 SF and 1,265 SF (may be leased separately or together)
- Term: 3, 5, or 10-year lease options available
- Use: Retail or food-service concepts that are compatible with the existing supermarket operations

Presented by California Bridge Realty

[www.calbridgerg.com](http://www.calbridgerg.com)





# Position Your Business for Success.

## Rachael Yun CEO | Broker

® Lic.02037889  
California Bridge Realty  
Commercial Leasing & Investment  
+1 714-334-1281  
[rachael@calbridgerg.com](mailto:rachael@calbridgerg.com)

## California Bridge Realty

S. California	6131 Orangethorpe Ave., Ste.135, Buena Park, CA 90620
N. California	1841 Charmeran Ave., San Jose, CA 95124
S. Korea	29F, Parnas Tower, 521, Teheran-ro, Gangnam-gu, Seoul

[www.calbridgerg.com](http://www.calbridgerg.com)