

46400 CONTINENTAL DRIVE
CHESTERFIELD TWP., MICHIGAN



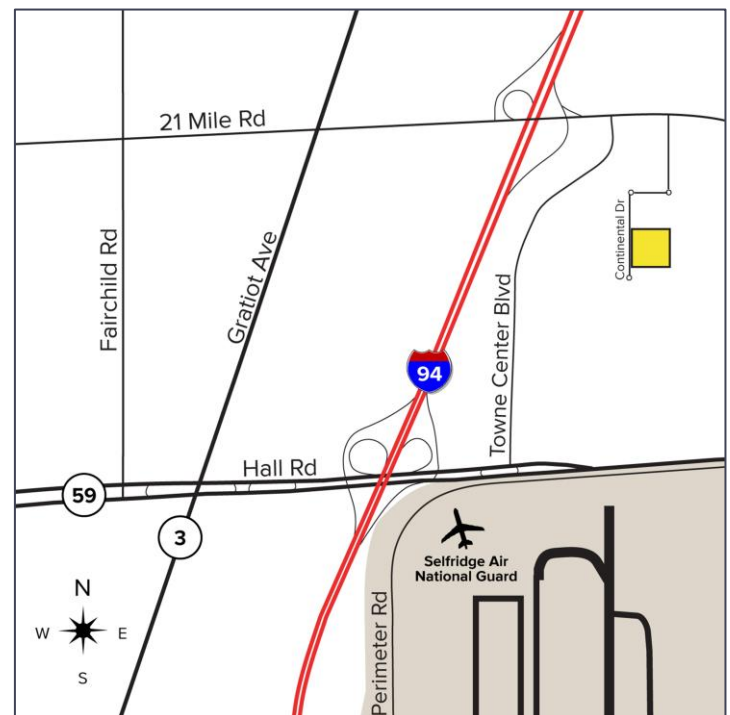
**SIGNATURE
ASSOCIATES**
KNOW SIGNATURE | KNOW RESULTS

OFFICE FOR LEASE
2,805 Square Feet Available



PROPERTY FEATURES

- 2,805 square feet available
- Second floor office space available
- Seconds from I-94
- Low lease rate covering all expenses, including utilities
- Heavy parking
- Available immediately
- Lease Rate: \$9.95/sq. ft. Full Gross



For more information, please contact:

BEN WILKIEMEYER
(248) 359 0624
bwilkiemeyer@signatureassociates.com

PAUL SAAD
(248) 359 0652
psaad@signatureassociates.com

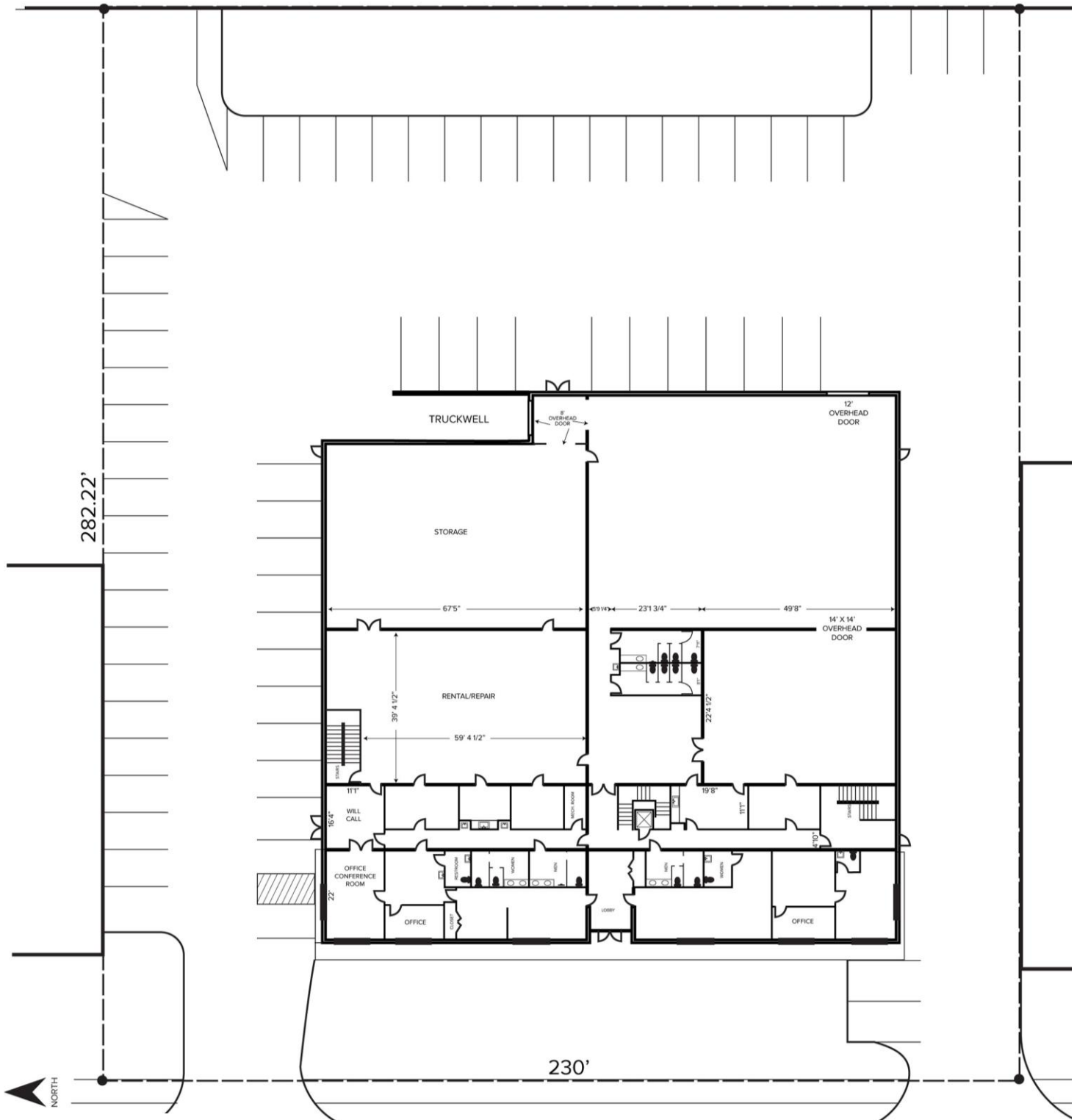
SIGNATURE ASSOCIATES
One Towne Square, Suite 1200
Southfield, MI 48076
www.signatureassociates.com

46400 Continental Drive – Chesterfield Twp., MI

Office For Lease

2,805
Square Feet
AVAILABLE

Site Plan



For more information, please contact:

BEN WILKIEMEYER
(248) 359 0624
bwilkiemeyer@signatureassociates.com

PAUL SAAD
(248) 359 0652
psaad@signatureassociates.com

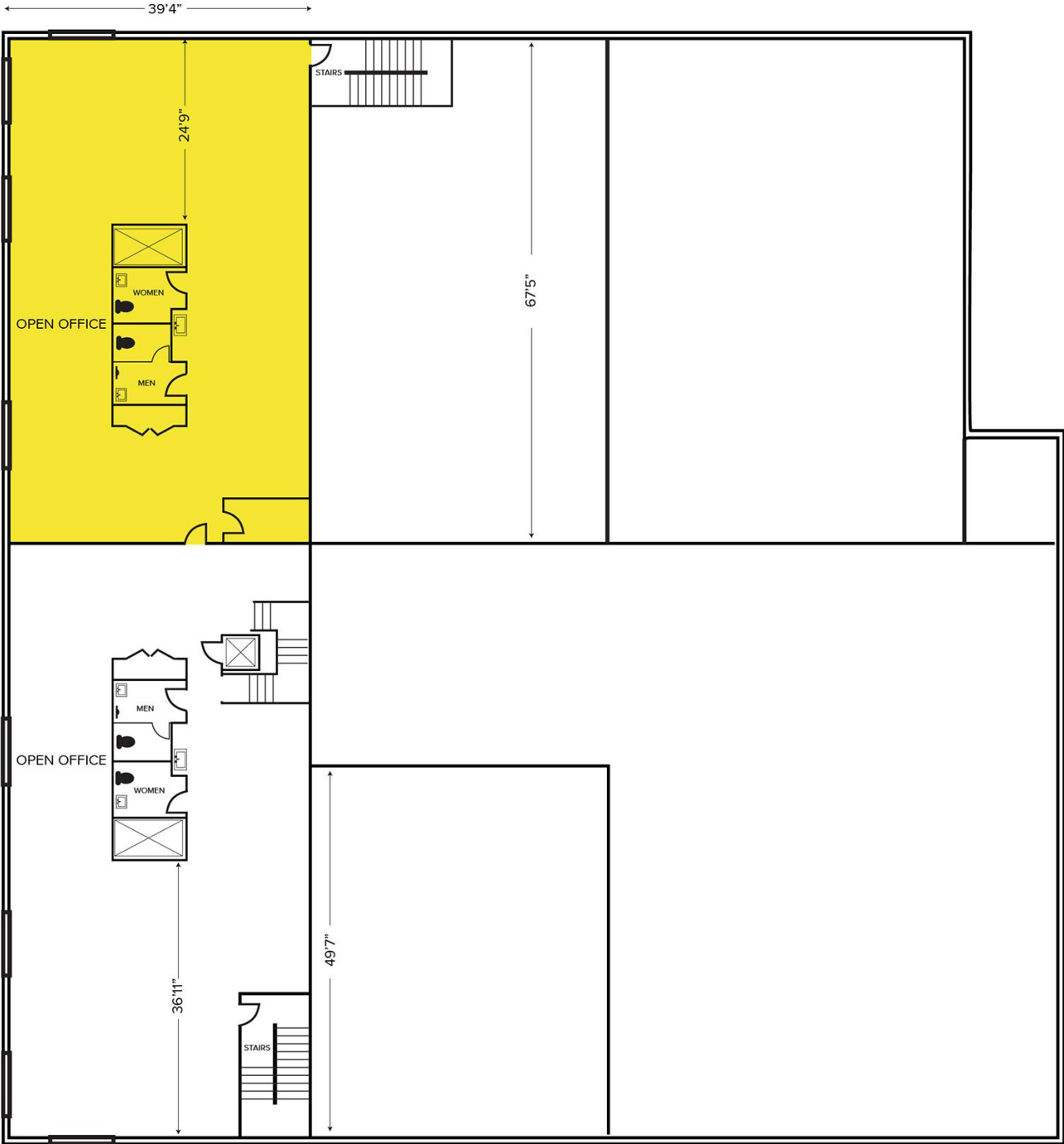
SIGNATURE ASSOCIATES
One Towne Square, Suite 1200
Southfield, MI 48076
www.signatureassociates.com

46400 Continental Drive – Chesterfield Twp., MI

Office For Lease

2,805
Square Feet
AVAILABLE

Floor Plan – 2nd Floor



For more information, please contact:

BEN WILKIEMEYER
(248) 359 0624
bwilkiemeyer@signatureassociates.com

PAUL SAAD
(248) 359 0652
psaad@signatureassociates.com

SIGNATURE ASSOCIATES
One Towne Square, Suite 1200
Southfield, MI 48076
www.signatureassociates.com

Information is subject to verification and no liability for errors or omissions is assumed. Price is subject to change and listing withdrawal.

46400 Continental Drive – Chesterfield Twp., MI

Office For Lease

2,805
Square Feet
AVAILABLE

Aerial



For more information, please contact:

BEN WILKIEMEYER
(248) 359 0624
bwilkiemeyer@signatureassociates.com

PAUL SAAD
(248) 359 0652
psaad@signatureassociates.com

SIGNATURE ASSOCIATES
One Towne Square, Suite 1200
Southfield, MI 48076
www.signatureassociates.com