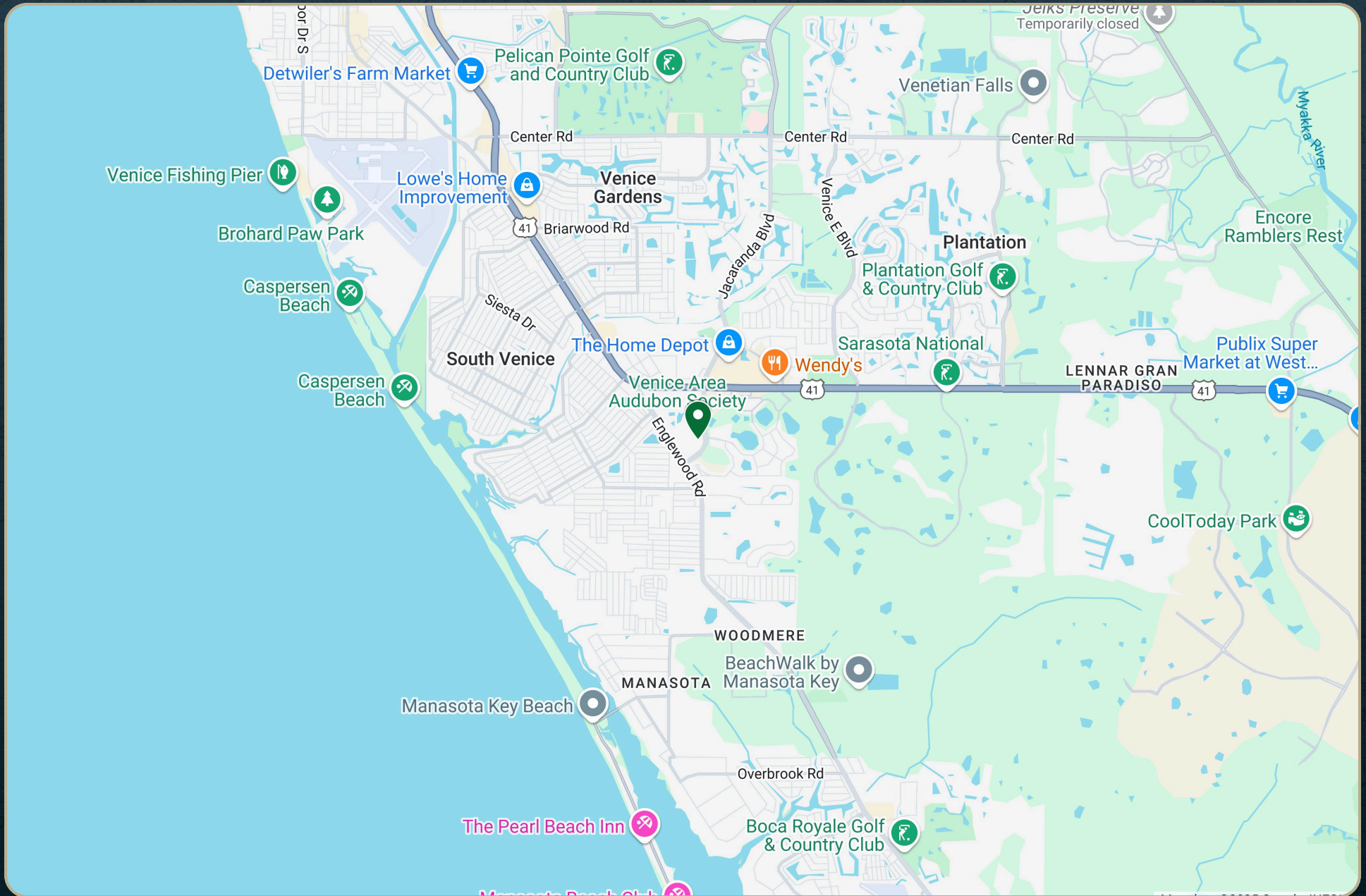


# REGIONAL MAP



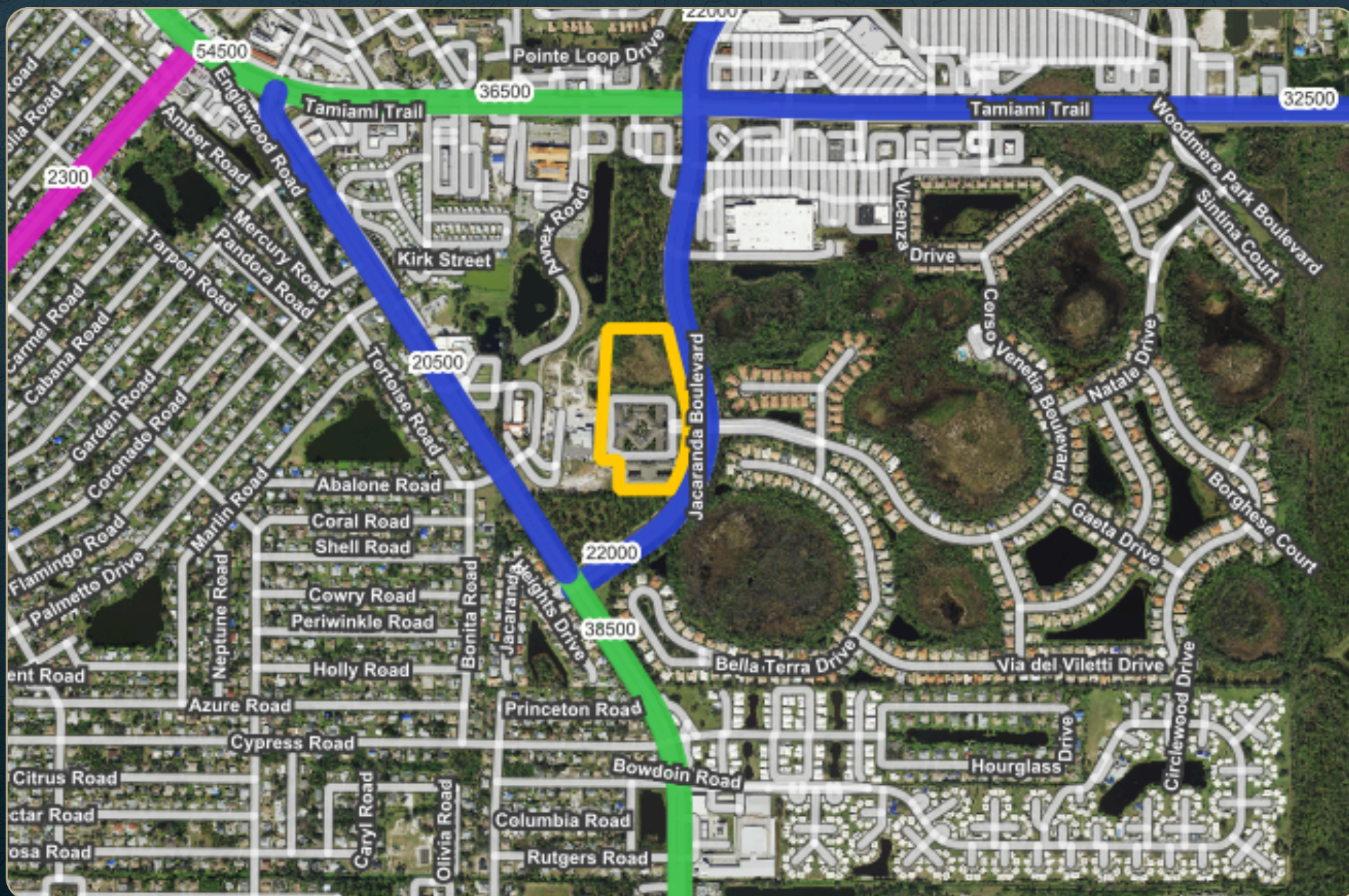


## AERIAL MAP





## TRAFFIC COUNT MAP



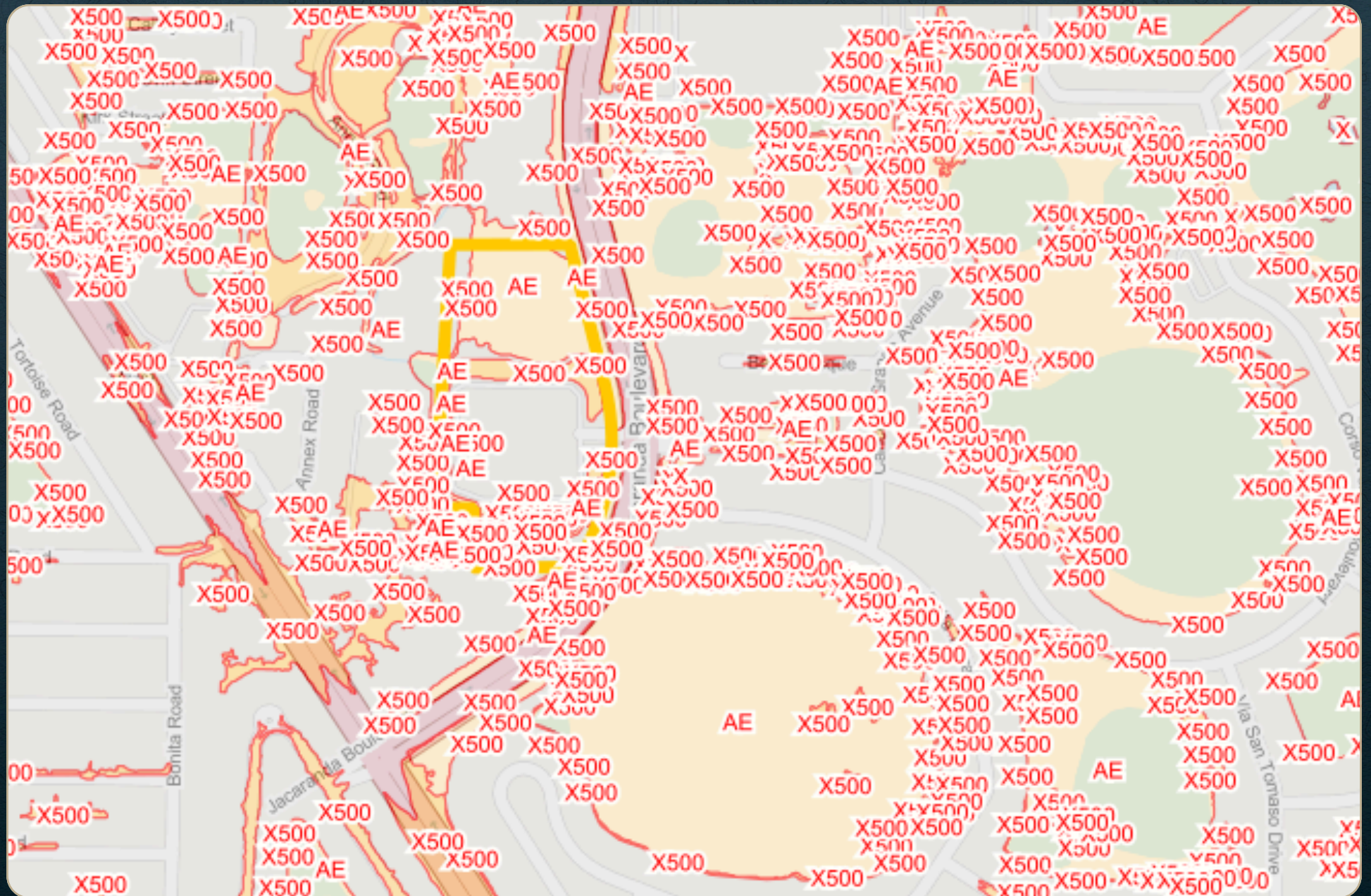


# ZONING MAP





# FLOOD MAP







# JESSE IALUNA

## Senior Advisor



[jgialuna@gmail.com](mailto:jgialuna@gmail.com)



978.496.5436



[www.callcaa.com](http://www.callcaa.com)

Jesse Ialuna has established a strong reputation for getting deals done. From multi-million dollar commercial projects to high-end residential properties and prime land opportunities, he is a trusted advisor to many entrepreneurs, business owners, and real estate investors. Mr. Ialuna moved to Southwest Florida in 2004.

From his early years in New England, he has an extensive family background going back 3 generations in construction, real estate, and development in New England as well as SWFL. He got his early start in the business world and rose to VP of sales for CSE, a national digital marketing firm based out of Punta Gorda FL. That background and extensive knowledge of Internet marketing strategies have given his real estate clients a clear advantage.

Mr. Ialuna is known by many to be a real estate powerhouse in both commercial and residential, in part due to his dedication to helping property owners and investors reach their goals, paired with his unrelenting hard work. Jesse has received multiple awards and has been ranked “Best of Zillow”.





CRACKER  
& ASSOCIATES, INC.  
RESIDENTIAL & COMMERCIAL

30168 Alder Rd | Punta Gorda, FL 33982