

HEAVY CRANE SERVED MANUFACTURING FACILITY WITH YARD

For Lease | ±44,120 SF on ±5.00 to ±15.00 AC

6400 Hawes Road | Humble, TX 77396

partners

LEASE RATE: CALL BROKER



PROPERTY SIZE

- » ±44,120 SF (Total)
- » ±5,000 SF Freestanding Office Building
- » ±5.00 - 15.00 Acres

BUILDING FEATURES

- » Metal Construction (Phases from 2004 – 2011)
- » Two (2) 30-Ton Cranes with 31' Hook Height
- » One (1) 10-Ton Crane with 31' Hook Height
- » One (1) 5-Ton Crane with 18' Hook Height
- » Seven Oversized Slide Open Grade-Level Doors (23'x25')
- » 3-Phase, 480v, ±1,000 Amp Power
- » LED Lighting Throughout
- » Partially Insulated Warehouse



CONTACT INFORMATION

Zane Carman
Partner
713 985 4418
zane.carman@partnersrealestate.com

Clay Pritchett, SIOR
Partner
713 985 4631
clay.pritchett@partnersrealestate.com

Jacob Cantu
Associate
713 405 7491
jacob.cantu@partnersrealestate.com

The information contained herein has been given to us by the owner of the property or other sources we deem reliable, we have no reason to doubt its accuracy, but we do not guarantee it. All information should be verified prior to purchase or lease. © 2024 Partners. All rights reserved.

HEAVY CRANE SERVED MANUFACTURING FACILITY WITH YARD

For Lease | ±44,120 SF on ±5.00 to ±15.00 AC

6400 Hawes Road | Humble, TX 77396

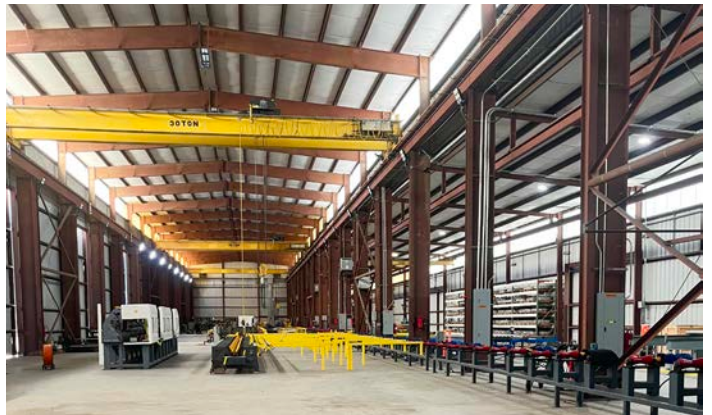
partners

PROPERTY IMAGES



PROPERTY FEATURES

- » Surplus Land Area for Yard or Building Expansion up to ±15.00 Acres
- » Detention Pond can be Reconfigured for More Functional Use of Surplus Land
- » Property is Fully Fenced, Gated, & Secured
- » Immediate access to I-69/US-59 & Beltway 8
- » No Zoning & No Known Use Restrictions



CONTACT INFORMATION

Zane Carman
Partner
713 985 4418
zane.carman@partnersrealestate.com

Clay Pritchett, SIOR
Partner
713 985 4631
clay.pritchett@partnersrealestate.com

Jacob Cantu
Associate
713 405 7491
jacob.cantu@partnersrealestate.com

The information contained herein has been given to us by the owner of the property or other sources we deem reliable, we have no reason to doubt its accuracy, but we do not guarantee it. All information should be verified prior to purchase or lease. © 2024 Partners. All rights reserved.

HEAVY CRANE SERVED MANUFACTURING FACILITY WITH YARD

For Lease | $\pm 44,120$ SF on ± 5.00 to ± 15.00 AC

6400 Hawes Road | Humble, TX 77396

partners



CONTACT INFORMATION

Zane Carman
Partner
713 985 4418
zane.carman@partnersrealestate.com

Clay Pritchett, SIOR
Partner
713 985 4631
clay.pritchett@partnersrealestate.com

Jacob Cantu
Associate
713 405 7491
jacob.cantu@partnersrealestate.com

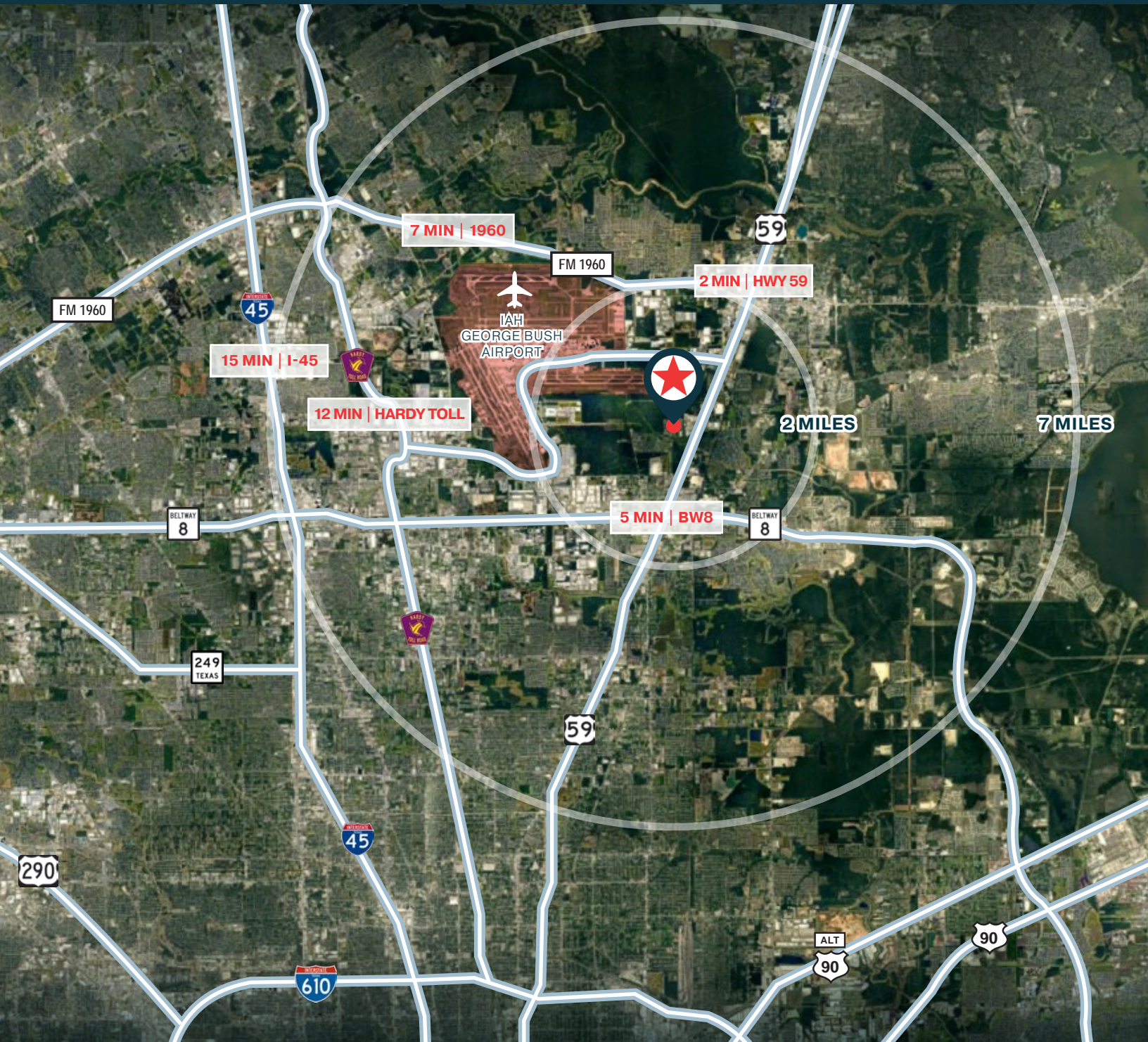
The information contained herein has been given to us by the owner of the property or other sources we deem reliable, we have no reason to doubt its accuracy, but we do not guarantee it. All information should be verified prior to purchase or lease. © 2024 Partners. All rights reserved.

HEAVY CRANE SERVED MANUFACTURING FACILITY WITH YARD

For Lease | ±44,120 SF on ±5.00 to ±15.00 AC

6400 Hawes Road | Humble, TX 77396

partners



CONTACT INFORMATION

Zane Carman
Partner
713 985 4418
zane.carman@partnersrealestate.com

Clay Pritchett, SIOR
Partner
713 985 4631
clay.pritchett@partnersrealestate.com

Jacob Cantu
Associate
713 405 7491
jacob.cantu@partnersrealestate.com

The information contained herein has been given to us by the owner of the property or other sources we deem reliable, we have no reason to doubt its accuracy, but we do not guarantee it. All information should be verified prior to purchase or lease. © 2024 Partners. All rights reserved.



Information About Brokerage Services

Texas law requires all real estate license holders to give the following information about brokerage services to prospective buyers, tenants, sellers and landlords.

11-2-2015



TYPES OF REAL ESTATE LICENSE HOLDERS:

- **A BROKER** is responsible for all brokerage activities, including acts performed by sales agents sponsored by the broker.
- **A SALES AGENT** must be sponsored by a broker and works with clients on behalf of the broker.

A BROKER'S MINIMUM DUTIES REQUIRED BY LAW (A client is the person or party that the broker represents):

- Put the interests of the client above all others, including the broker's own interests;
- Inform the client of any material information about the property or transaction received by the broker;
- Answer the client's questions and present any offer to or counter-offer from the client; and
- Treat all parties to a real estate transaction honestly and fairly.

A LICENSE HOLDER CAN REPRESENT A PARTY IN A REAL ESTATE TRANSACTION:

AS AGENT FOR OWNER (SELLER/LANDLORD): The broker becomes the property owner's agent through an agreement with the owner, usually in a written listing to sell or property management agreement. An owner's agent must perform the broker's minimum duties above and must inform the owner of any material information about the property or transaction known by the agent, including information disclosed to the agent or subagent by the buyer or buyer's agent.

AS AGENT FOR BUYER/TENANT: The broker becomes the buyer/tenant's agent by agreeing to represent the buyer, usually through a written representation agreement. A buyer's agent must perform the broker's minimum duties above and must inform the buyer of any material information about the property or transaction known by the agent, including information disclosed to the agent by the seller or seller's agent.

AS AGENT FOR BOTH - INTERMEDIARY: To act as an intermediary between the parties the broker must first obtain the written agreement of *each party* to the transaction. The written agreement must state who will pay the broker and, in conspicuous bold or underlined print, set forth the broker's obligations as an intermediary. A broker who acts as an intermediary:

- Must treat all parties to the transaction impartially and fairly;
- May, with the parties' written consent, appoint a different license holder associated with the broker to each party (owner and buyer) to communicate with, provide opinions and advice to, and carry out the instructions of each party to the transaction.
- Must not, unless specifically authorized in writing to do so by the party, disclose:
 - o that the owner will accept a price less than the written asking price;
 - o that the buyer/tenant will pay a price greater than the price submitted in a written offer; and
 - o any confidential information or any other information that a party specifically instructs the broker in writing not to disclose, unless required to do so by law.

AS SUBAGENT: A license holder acts as a subagent when aiding a buyer in a transaction without an agreement to represent the buyer. A subagent can assist the buyer but does not represent the buyer and must place the interests of the owner first.

TO AVOID DISPUTES, ALL AGREEMENTS BETWEEN YOU AND A BROKER SHOULD BE IN WRITING AND CLEARLY ESTABLISH:

- The broker's duties and responsibilities to you, and your obligations under the representation agreement.
- Who will pay the broker for services provided to you, when payment will be made and how the payment will be calculated.

LICENSE HOLDER CONTACT INFORMATION: This notice is being provided for information purposes. It does not create an obligation for you to use the broker's services. Please acknowledge receipt of this notice below and retain a copy for your records.

PCR Brokerage Houston, LLC
dba Partners

Licensed Broker /Broker Firm Name or
Primary Assumed Business Name

Jon Silberman

Designated Broker of Firm

Travis Land

Licensed Supervisor of Sales Agent/
Associate

Clay Pritchett / Zane Carman

Sales Agent/Associate's Name

9003949

License No.

389162

License No.

498101

License No.

502677 / 677317

License No.

licensing@partnersrealestate.com

Email

jon.silberman@partnersrealestate.com

Email

travis.land@partnersrealestate.com

Email

clay.pritchett@partnersrealestate.com
zane.carman@partnersrealestate.com

Email

713-629-0500

Phone

713-629-0500

Phone

713-629-0500

Phone

713-629-0500

Phone

Buyer/Tenant/Seller/Landlord Initials

Date