



Each office independently owned and operated

FOR LEASE

OFFICE BUILDING

# 1440 ARCADE ST NORTH - UNIT F

SAINT PAUL, MN 55106

RE/MAX ADVANTAGE PLUS

1251 Town Centre Drive  
Eagan, MN 55123  
REMAXCOMMERCIAL.COM

FOR MORE  
INFORMATION  
CONTACT:

**TIM LITTLE**

Chief Commercial Broker  
952.432.4900  
tctimlittle@gmail.com

**JIM STARR**

Sr. Associate  
612.247.5898  
jjstarr41@gmail.com

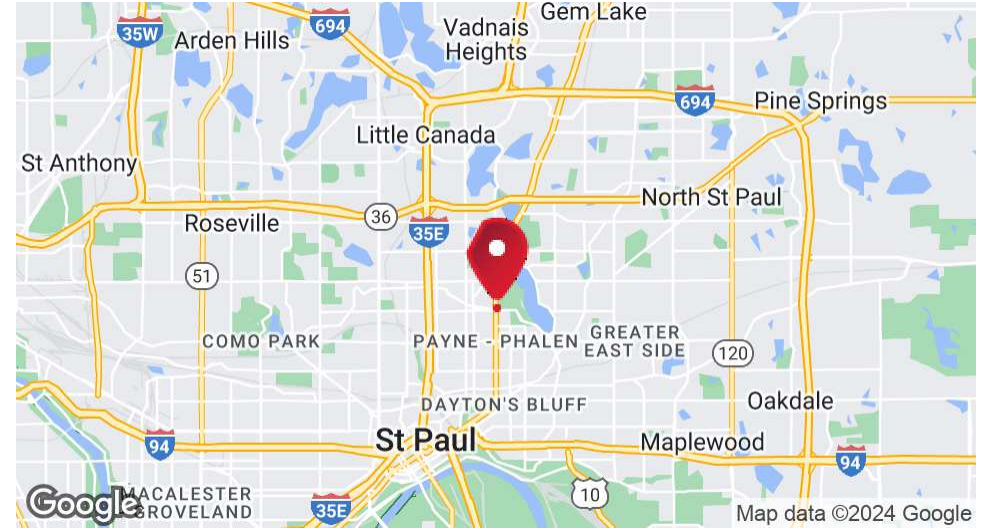
**JEREMY FELDMANN**

Associate  
406.314.3333  
jeremy.feldmann@remax.net



# 1440 ARCADE ST NORTH - UNIT F

SAINT PAUL, MN 55106



## OFFERING SUMMARY

Lease Rate:	\$1,450.00 per month (Gross)
Available SF:	1,170 SF
Lot Size:	0.51 Acres
Building Size:	15,960 SF

## PROPERTY DESCRIPTION

Lease Rate: \$1,450/mo (includes utilities)  
 Space Size: 1,170 SF  
 Includes Kitchen space  
 Lease Term (in months): 36 – 60  
 Building Size: 15,960 sf  
 Lot Size: 0.51 A  
 Renovated: 2008  
 Zoning: Retail / Business / Office



ADVANTAGE PLUS

Each office independently owned and operated

**TIM LITTLE**  
 Chief Commercial Broker  
 952.432.4900  
 tctimlittle@gmail.com

**JIM STARR JEREMY FELDMANN**  
 Sr. Associate Associate  
 612.247.5898 406.314.3333  
 jjstarr41@gmail.com jeremy.feldmann@remax.net

1251 Town Centre Drive  
Eagan, MN 55123

REMAXCOMMERCIAL.COM

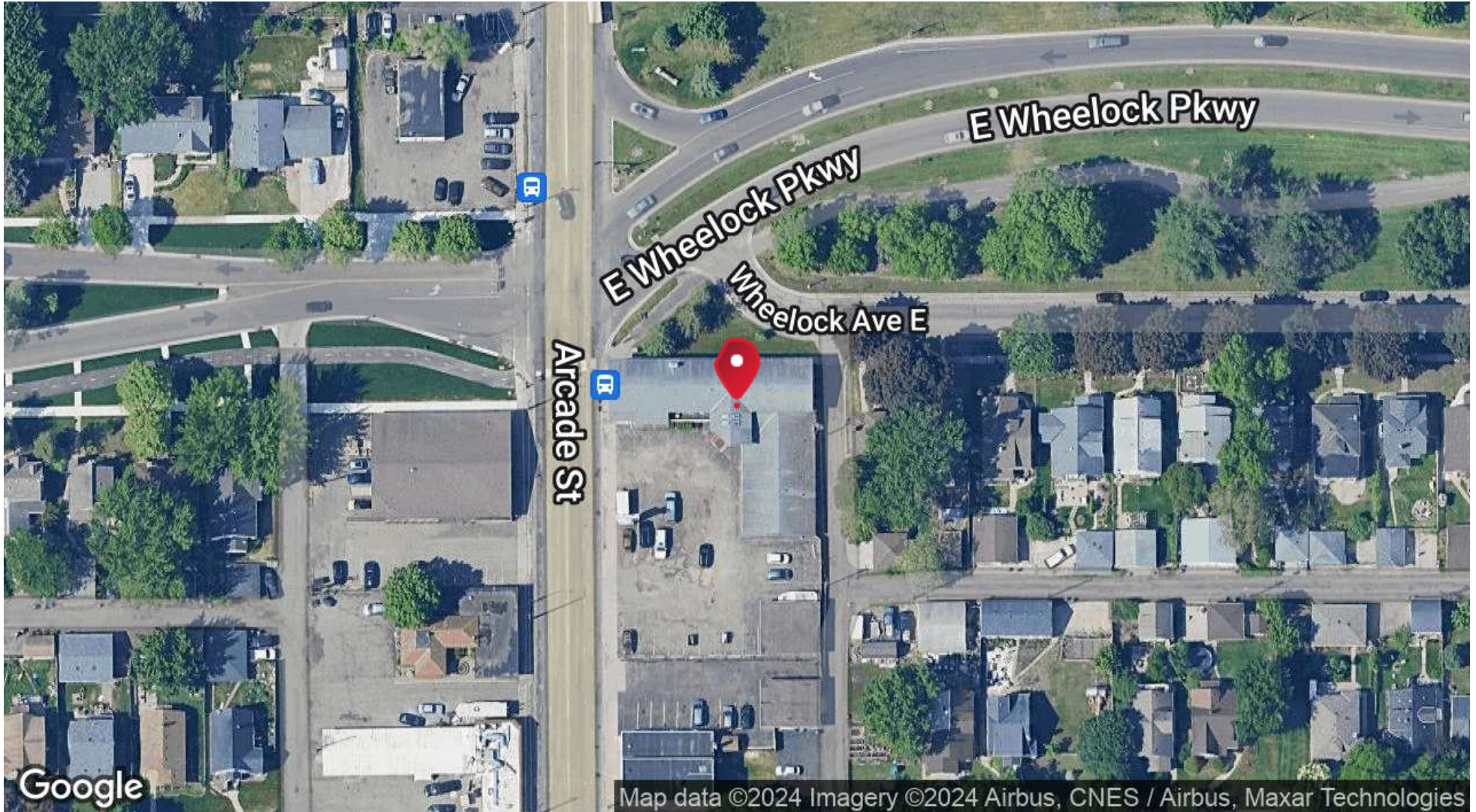
FOR LEASE

OFFICE BUILDING

LOCATION MAP

# 1440 ARCADE ST NORTH - UNIT F

SAINT PAUL, MN 55106



ADVANTAGE PLUS

Each office independently owned and operated

**TIM LITTLE**  
Chief Commercial Broker  
952.432.4900  
tctimlittle@gmail.com

**JIM STARR JEREMY FELDMANN**  
Sr. Associate Associate  
612.247.5898 406.314.3333  
jjstarr41@gmail.com jeremy.feldmann@remax.net

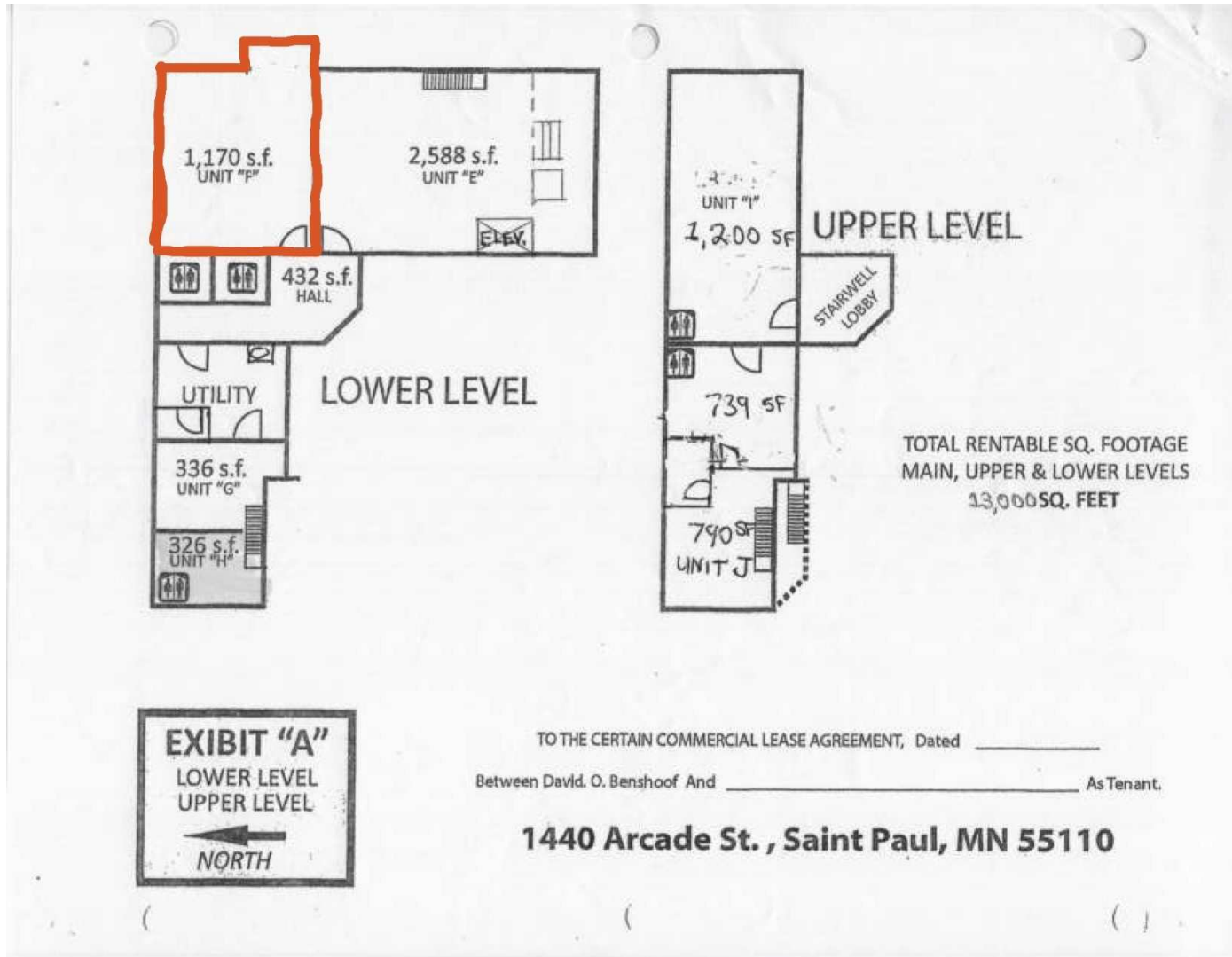
1251 Town Centre Drive  
Eagan, MN 55123

REMAXCOMMERCIAL.COM

All information contained herein is deemed reliable but not guaranteed. Each office independently owned and operated

# 1440 ARCADE ST NORTH - UNIT F

SAINT PAUL, MN 55106



**ADVANTAGE PLUS**  
Each office independently owned and operated

**TIM LITTLE**  
Chief Commercial Broker  
952.432.4900  
tctimlittle@gmail.com

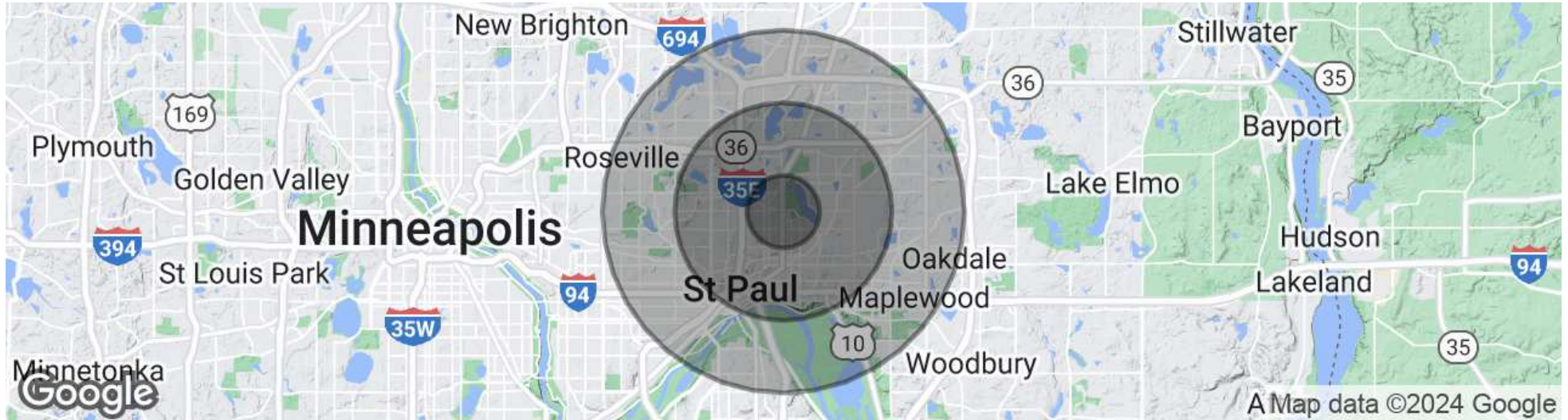
**JIM STARR JEREMY FELDMANN**  
Sr. Associate Associate  
612.247.5898 406.314.3333  
jjstarr41@gmail.com jeremy.feldmann@remax.net

1251 Town Centre Drive  
Eagan, MN 55123

REMAXCOMMERCIAL.COM

# 1440 ARCADE ST NORTH - UNIT F

SAINT PAUL, MN 55106



POPULATION	1 MILE	3 MILES	5 MILES
Total Population	18,925	137,380	312,180
Average Age	29.0	30.2	32.7
Average Age (Male)	28.9	29.7	31.6
Average Age (Female)	29.2	30.8	33.9

HOUSEHOLDS & INCOME	1 MILE	3 MILES	5 MILES
Total Households	6,341	48,342	121,186
# of Persons per HH	3.0	2.8	2.6
Average HH Income	\$54,852	\$50,433	\$55,719
Average House Value	\$161,274	\$203,927	\$223,046

2020 American Community Survey (ACS)



**ADVANTAGE PLUS**  
Each office independently owned and operated

**TIM LITTLE**  
Chief Commercial Broker  
952.432.4900  
tctimlittle@gmail.com

**JIM STARR JEREMY FELDMANN**  
Sr. Associate Associate  
612.247.5898 406.314.3333  
jjstarr41@gmail.com jeremy.feldmann@remax.net

1251 Town Centre Drive  
Eagan, MN 55123

REMAXCOMMERCIAL.COM

FOR LEASE

OFFICE BUILDING

MEET THE TEAM

# 1440 ARCADE ST NORTH - UNIT F

SAINT PAUL, MN 55106



## TIM LITTLE

Chief Commercial Broker

**Direct:** 952.432.4900 **Cell:** 952.432.4900  
tctimlittle@gmail.com



## JIM STARR

Sr. Associate

**Direct:** 612.247.5898 **Cell:** 612.247.5898  
jjstarr41@gmail.com



## JEREMY FELDMANN

Associate

**Direct:** 406.314.3333 **Cell:** 406.314.3333  
jeremy.feldmann@remax.net



ADVANTAGE PLUS

Each office independently owned and operated

**TIM LITTLE**  
Chief Commercial Broker  
952.432.4900  
tctimlittle@gmail.com

**JIM STARR JEREMY FELDMANN**  
Sr. Associate Associate  
612.247.5898 406.314.3333  
jjstarr41@gmail.com jeremy.feldmann@remax.net

1251 Town Centre Drive  
Eagan, MN 55123

REMAXCOMMERCIAL.COM

All information contained herein is deemed reliable but not guaranteed. Each office independently owned and operated