

For Lease

**Industrial Multi-Unit 6,000 - 7,000 Sqft Unit
Available Immediately.**

26' Clear Height, 1 Truck Level Door

**6811 Edwards Blvd Unit A
Mississauga, Ontario**

Afzal Paracha

Broker

+1 647 890 4205

muhammad.paracha@gmail.com

Property Details

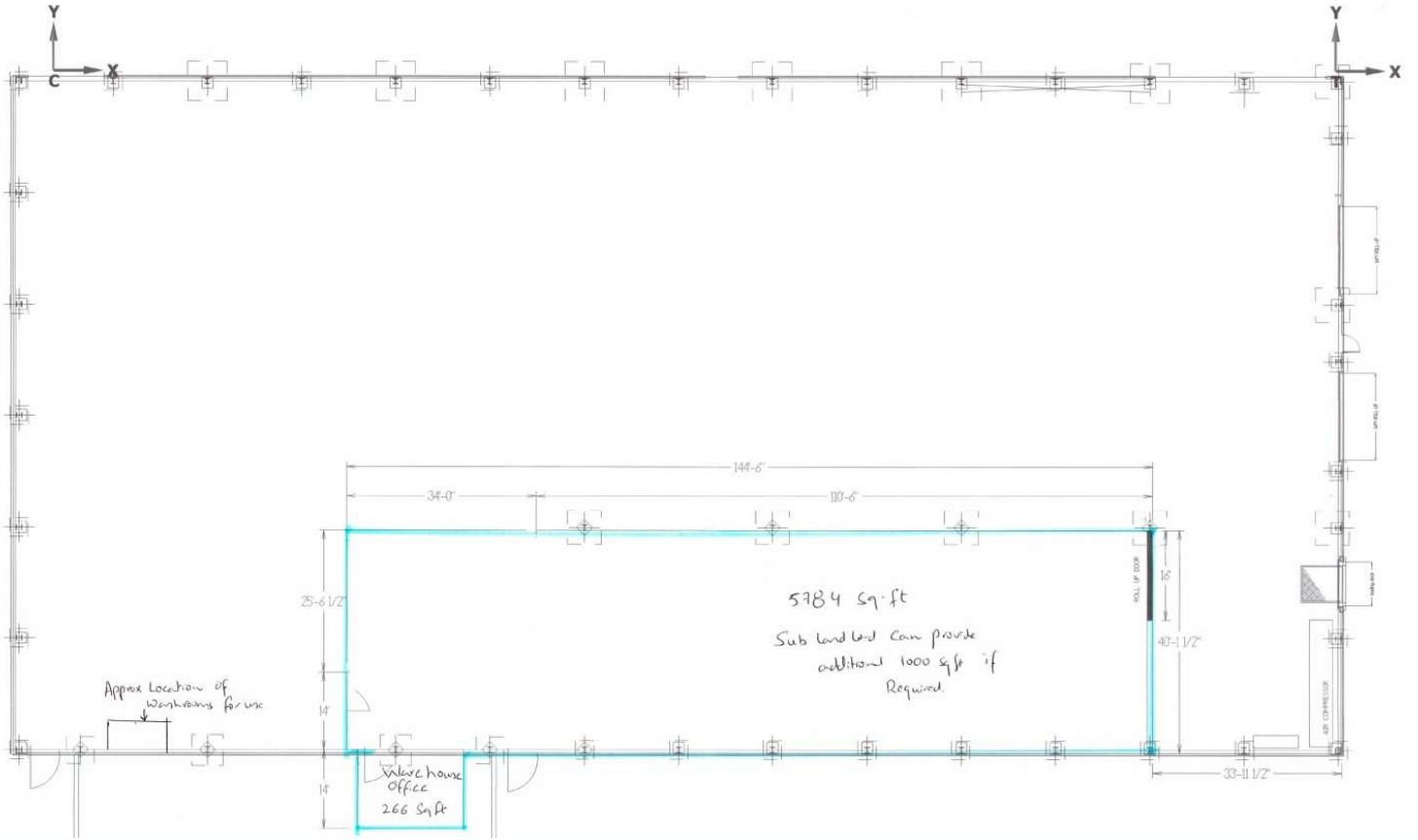
Unit Size	6,000 - 7,000 SF Available
Office Area	5%
Unit	Multi-Unit
Clear Height	26'
Zoning	E2
Shipping	1TL / 1 DI (Available If Required on Mutually Agreed Upon Times)
Power	600 -1200 A / 600 V Heavy
TMI	\$3.4 (2024)
Possession	Available Immediately
Asking Price	\$19

Comments

- Industrial Multi-Unit 6,000 - 7,000 Sqft Unit Available Immediately
- 26' Clear Height, 1 Truck Level Door, Drive In Door Can be Used Occasionally Upon Mutually Agree Time
- Close proximity to Highway 403, 401, 407 410 Easy Public Transport Connections to Labor Nodes and Pearson International Airport
- The Property is Zoned E2 Which Allows For Many Uses Under E2 Zoning With Abundant Parking
- Complex is Professionally Managed
- Heavy power

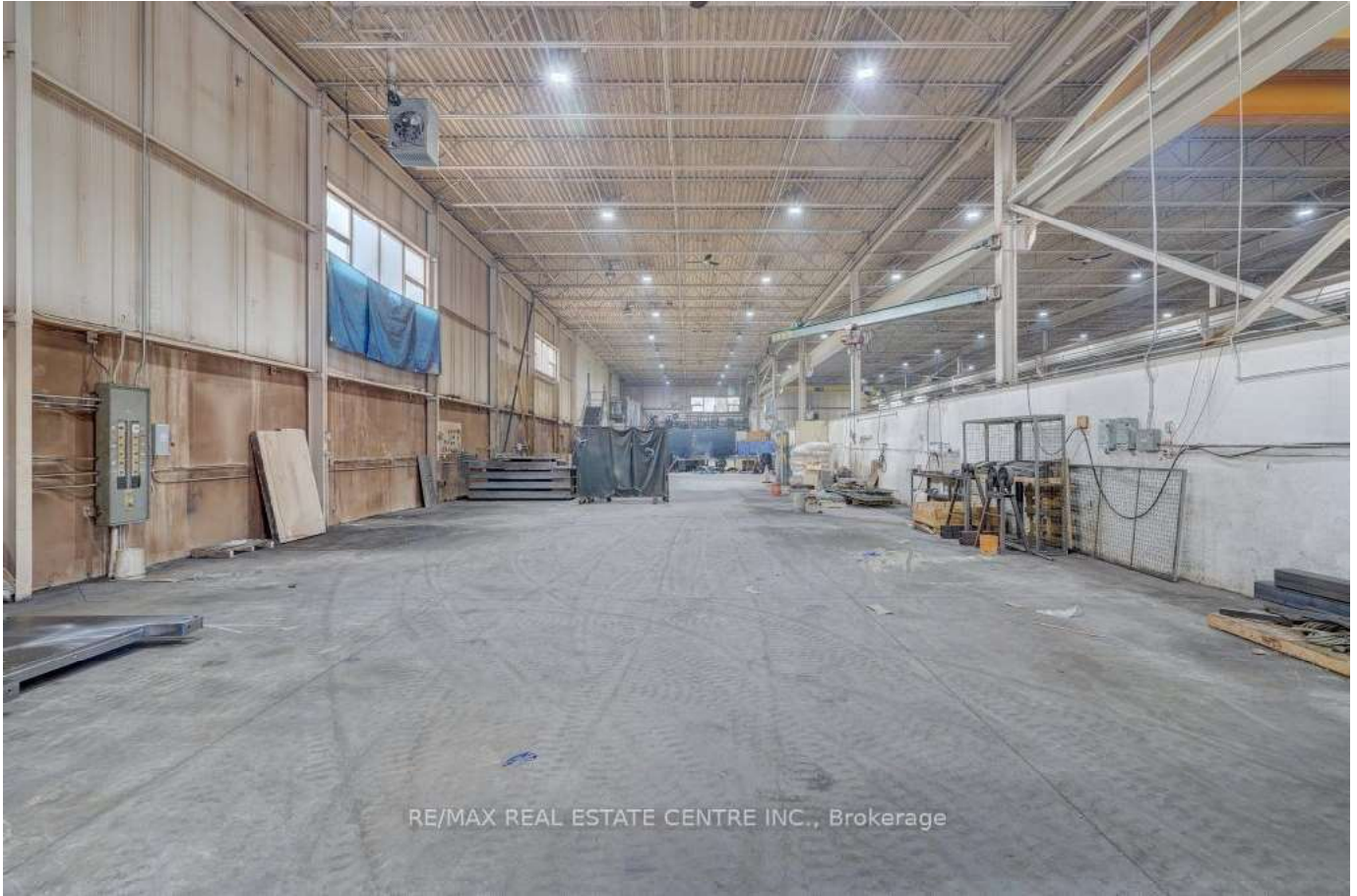
*All details to be confirmed by Buyer/Buyer's Agent

Floor Plan



Property Photos

6811 Edwards Blvd, Mississauga



RE/MAX REAL ESTATE CENTRE INC., Brokerage



RE/MAX REAL ESTATE CENTRE INC., Brokerage

Transportation

6811 Edwards Blvd, Mississauga

