

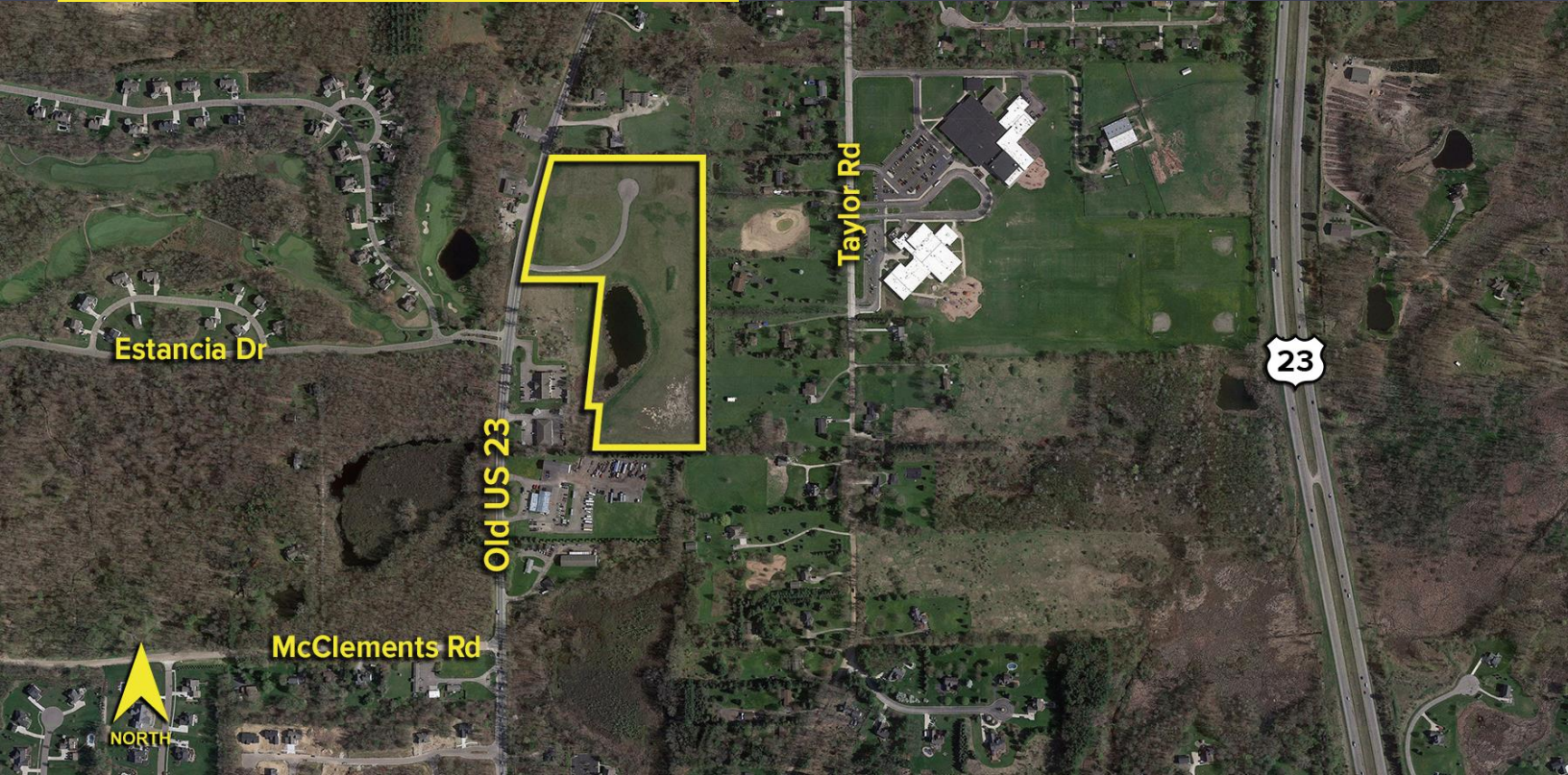
**ACME WAY
BRIGHTON TWP., MICHIGAN**

**VACANT LAND FOR SALE
20.03 Acres Available**



**SIGNATURE
ASSOCIATES**
KNOW SIGNATURE | KNOW RESULTS

DEVELOPMENT LAND



PROPERTY FEATURES

- 20.03 acres available
- Zoned B-2
- 7 approved lots
- Near US-23, I-96 & M-59
- Interior road and utilities completed
- Shovel ready commercial park
- Sale Price: \$1,195,000 (\$59,651.58/acre)



For more information, please contact:

RICK BIRDSALL

(248) 799 3145

rbirdsall@signatureassociates.com

CHRIS MONSOUR

(248) 948 0107

cmonsor@signatureassociates.com

SIGNATURE ASSOCIATES

One Towne Square, Suite 1200

Southfield, MI 48076

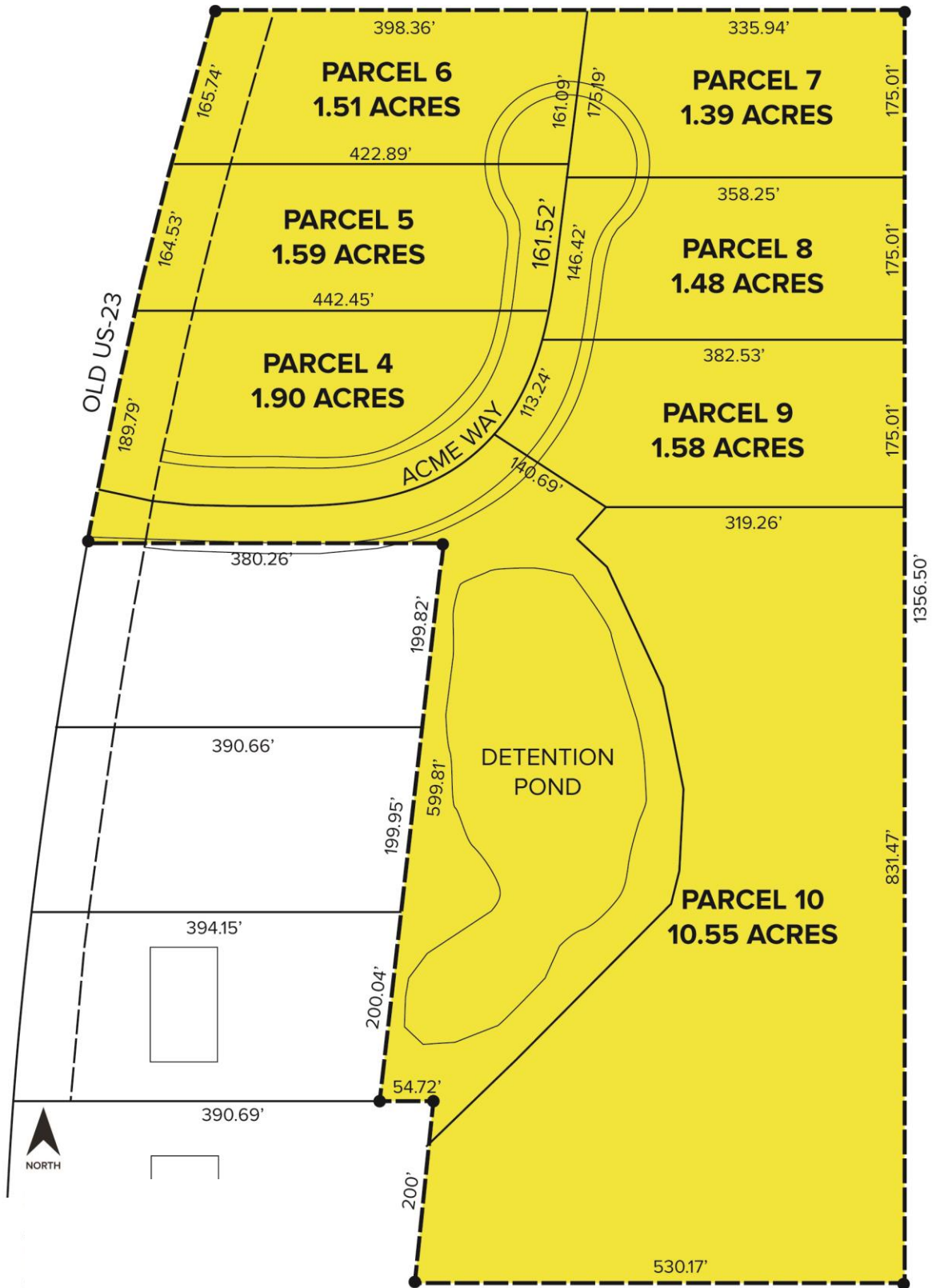
www.signatureassociates.com

Acme Way - Brighton, Michigan

Land For Sale

20.03
Acres
AVAILABLE

Site Plan



For more information, please contact:

RICK BIRDSALL
(248) 799 3145
rbirdsall@signatureassociates.com

CHRIS MONSOUR
(248) 948 0107
cmonsor@signatureassociates.com

SIGNATURE ASSOCIATES
One Towne Square, Suite 1200
Southfield, MI 48076
www.signatureassociates.com