

LAND FOR SALE

HIGHLY VISIBLE COMMERCIAL LAND ALONG I-95

0 US HIGHWAY 178, DORCHESTER COUNTY, SC 29018



W. CARLYLE BLAKENEY

O: 843.266.3928

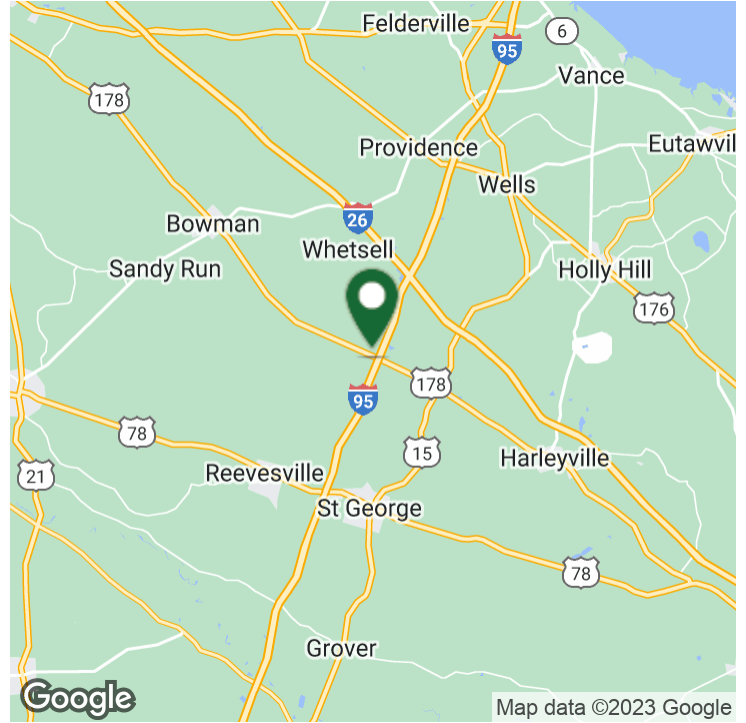
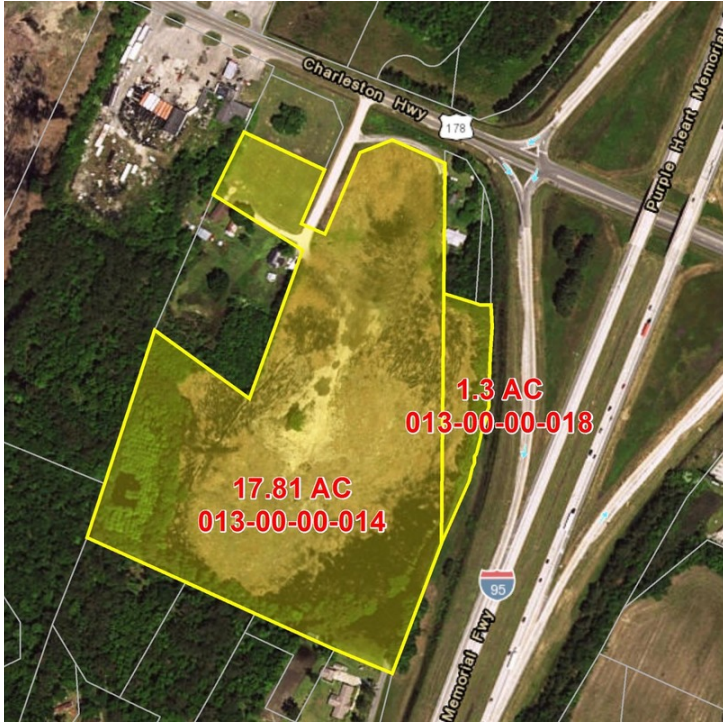
C: 843.371.0774

cblakeney@ravenelcommercial.com

HIGHLY VISIBLE COMMERCIAL LAND ALONG I-95

0 US HIGHWAY 178, DORCHESTER COUNTY, SC 29018

LAND FOR SALE



OFFERING SUMMARY

Sale Price:	\$925,000
Lot Size:	19.11 Acres
Price / Acre:	\$48,404
Zoning:	GC-General Commercial
Traffic Count:	48,400
County:	Dorchester

PROPERTY OVERVIEW

Commercial development opportunity! 19.11 acres of highly visible vacant land located along US Highway 178 & I-95 Southbound. 3.5 miles to the intersection of I-26 & I-95. Approximately 1,000 linear feet frontage on I-95. Across the interstate from a Pilot Travel Center and Hotel. Water, sewer, and utilities available. DIRECTIONS: 26 W to Exit 169A/95 South. Take Exit 82 for 178 W. Turn left onto 178 W. Property on Left.

PROPERTY HIGHLIGHTS

- TMS 013-00-00-018 & 013-00-00-014
- Water & Sewer available
- High visibility on I-95
- 3.5 miles to I-26
- Approx. 1,000 linear feet on I-95
- Across the interstate from Pilot Travel Center & Hotel
- Lat/Long: 33.269842, -80.571391.

W. CARLYLE BLAKENEY

O: 843.266.3928

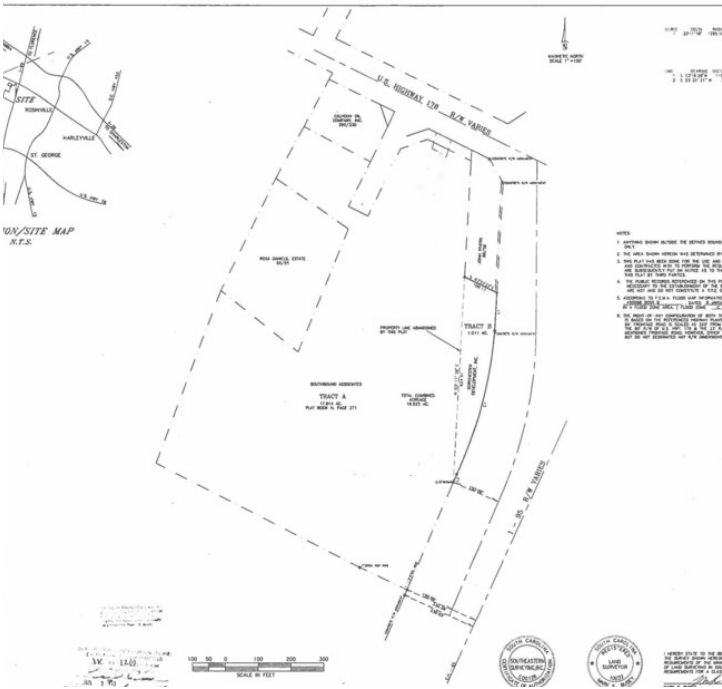
C: 843.371.0774

cblakeney@ravenelcommercial.com

RAVENEL
ASSOCIATES
COMMERCIAL

HIGHLY VISIBLE COMMERCIAL LAND ALONG I-95
 0 US HIGHWAY 178, DORCHESTER COUNTY, SC 29018

LAND FOR SALE



W. CARLYLE BLAKENEY

O: 843.266.3928

C: 843.371.0774

cblakeney@ravenelcommercial.com

**RAVENEL
 ASSOCIATES**
 COMMERCIAL

HIGHLY VISIBLE COMMERCIAL LAND ALONG I-95
 0 US HIGHWAY 178, BOWMAN, SC 29018

LAND FOR SALE



W. CARLYLE BLAKENEY

O: 843.266.3928

C: 843.371.0774

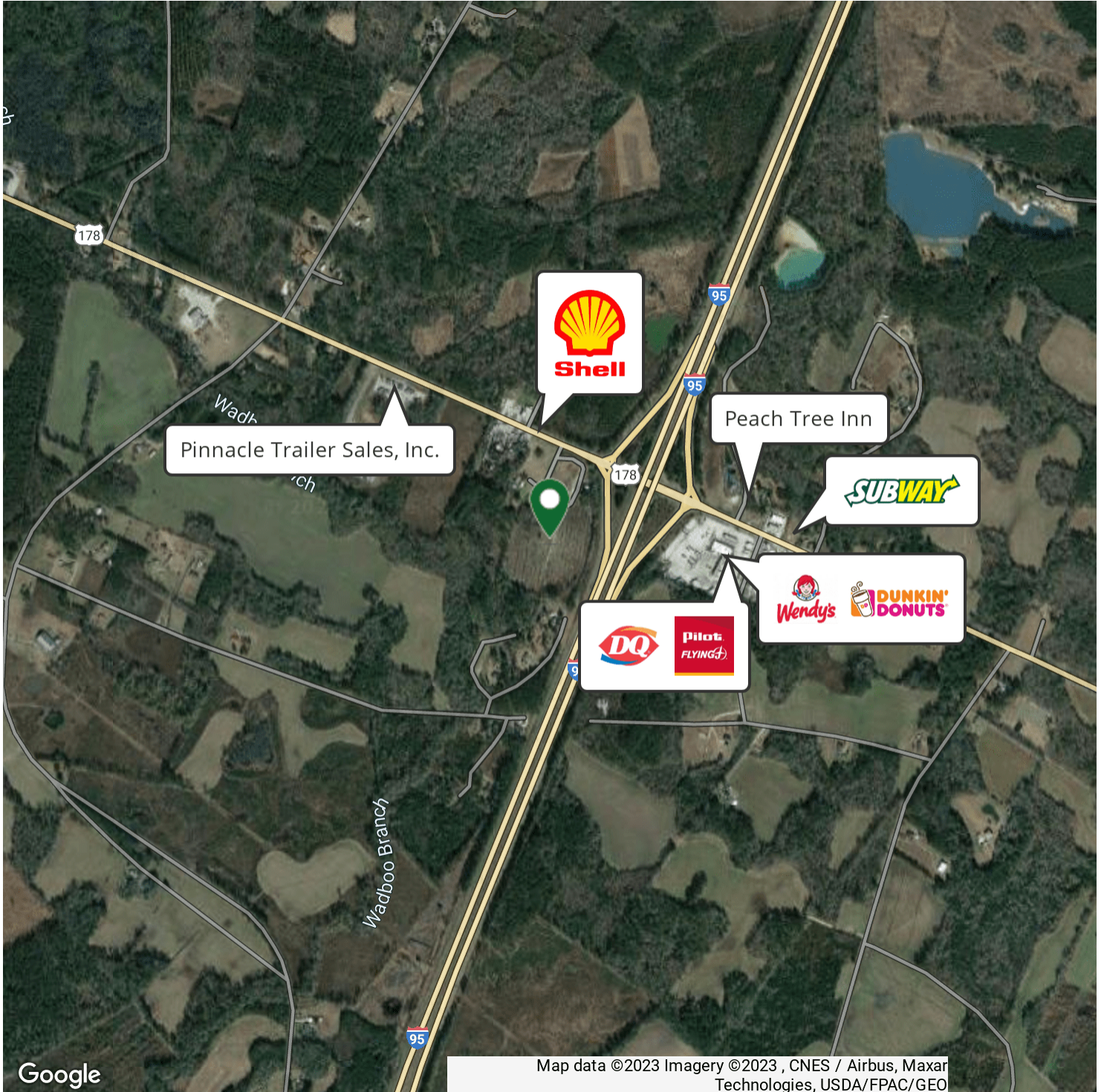
cblakeney@ravenelcommercial.com

960 MORRISON DRIVE, SUITE 100, CHARLESTON, SC 29403 | 843.266.3900 | RAVENELCOMMERCIAL.COM

RAVENEL
 ASSOCIATES
 COMMERCIAL

HIGHLY VISIBLE COMMERCIAL LAND ALONG I-95
0 US HIGHWAY 178, DORCHESTER COUNTY, SC 29018

LAND FOR SALE



W. CARLYLE BLAKENEY

O: 843.266.3928

C: 843.371.0774

cblakeney@ravenelcommercial.com

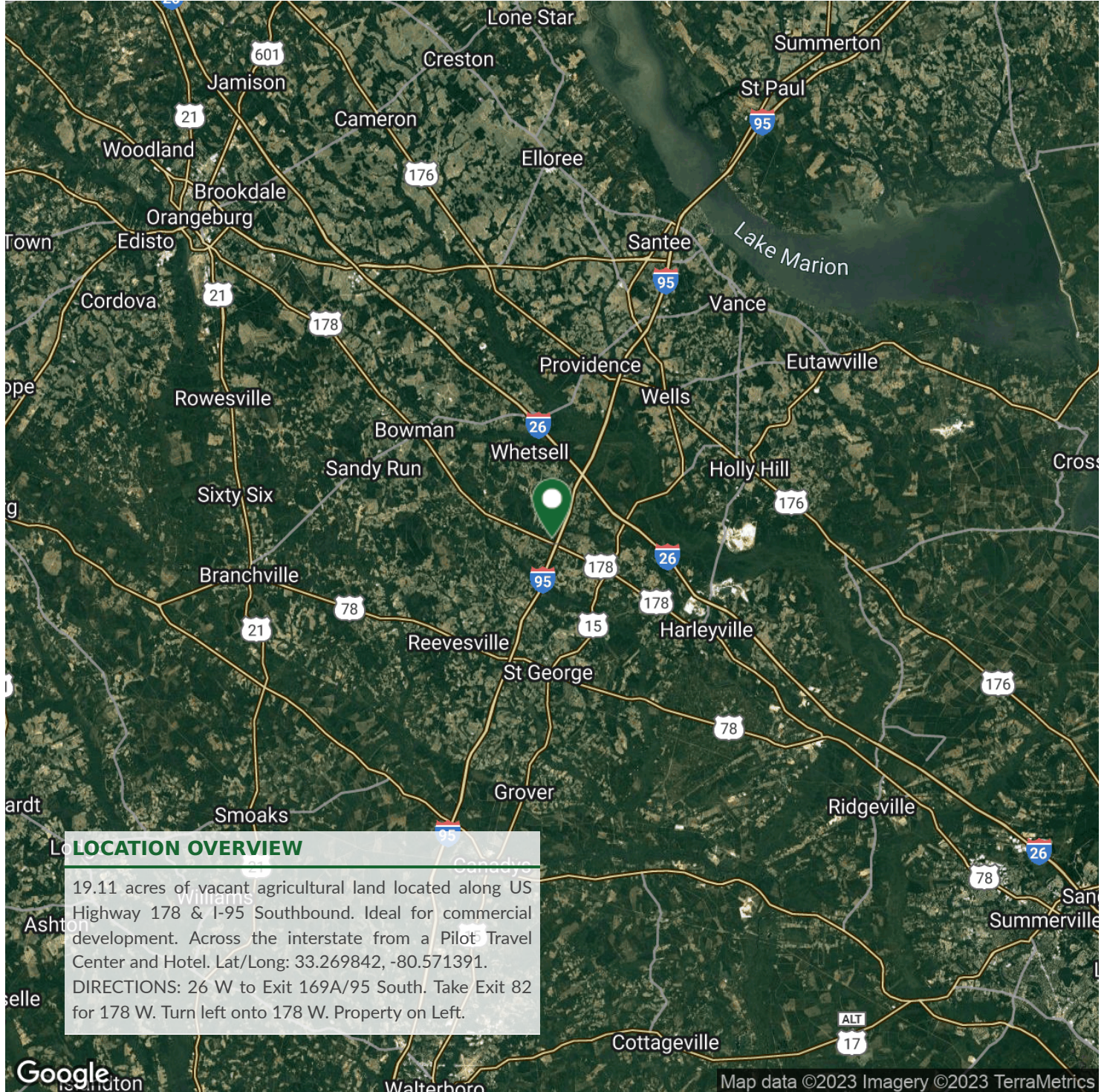
960 MORRISON DRIVE, SUITE 100, CHARLESTON, SC 29403 | 843.266.3900 | RAVENELCOMMERCIAL.COM

**RAVENEL
ASSOCIATES**
COMMERCIAL

HIGHLY VISIBLE COMMERCIAL LAND ALONG I-95

0 US HIGHWAY 178, BOWMAN, SC 29018

LAND FOR SALE



W. CARLYLE BLAKENEY

O: 843.266.3928

C: 843.371.0774

cblakeney@ravenelcommercial.com

**RAVENEL
ASSOCIATES**
COMMERCIAL

960 MORRISON DRIVE, SUITE 100, CHARLESTON, SC 29403 | 843.266.3900 | RAVENELCOMMERCIAL.COM

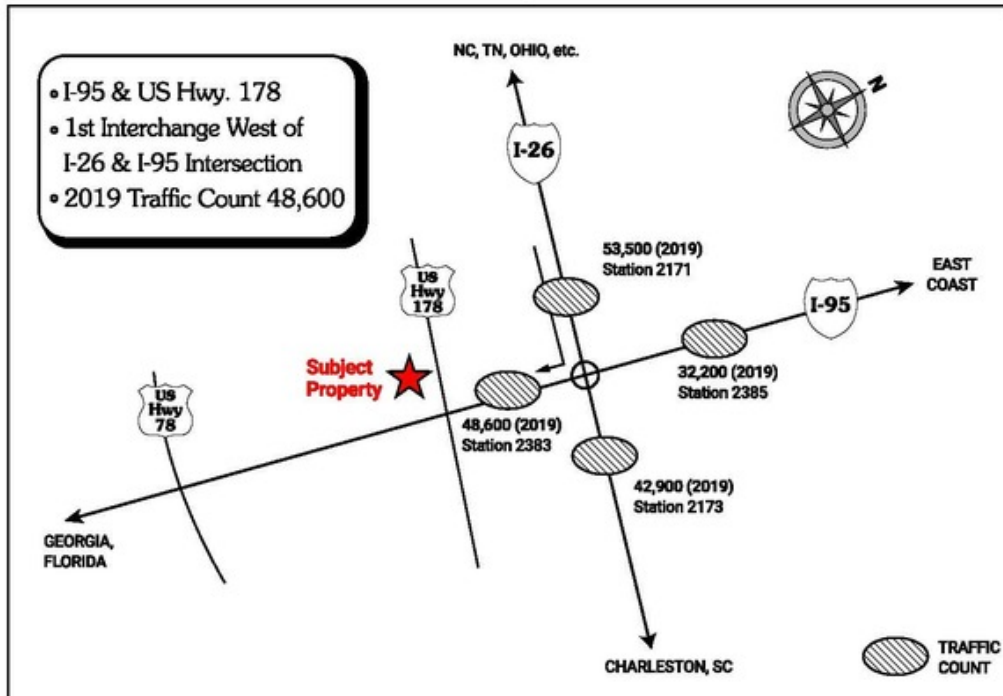
HIGHLY VISIBLE COMMERCIAL LAND ALONG I-95

0 US HIGHWAY 178, BOWMAN, SC 29018

LAND FOR SALE

PRIME COMMERCIAL PROPERTY

Dorchester County South Carolina



LOCATION:	I-95 At US Hwy 178
TRAFFIC COUNT:	48,600 Vehicles Per Day (S.C. Hwy. Dept. 2019)
UTILITIES:	Water & Sewer in close proximity
ZONING:	Commercial General - Dorchester County
USAGE:	Ideal site for travel center, motel, regional distribution, factory outlet center, service stations, restaurants, campground.
ADDITIONAL INFORMATION:	1st interchange south of major I-95 & I-26 intersection. Reflects the heaviest traffic direction headed south on I-95.
CONTACT:	Carlyle Blakeney 843/371-0774

W. CARLYLE BLAKENEY

O: 843.266.3928

C: 843.371.0774

cblakeney@ravenelcommercial.com

**RAVENEL
ASSOCIATES**
COMMERCIAL

HIGHLY VISIBLE COMMERCIAL LAND ALONG I-95

0 US HIGHWAY 178, BOWMAN, SC 29018

W. CARLYLE BLAKENEY

843.266.3928

cblakeney@ravenelcommercial.com

RAVENEL
ASSOCIATES
COMMERCIAL

All information provided is deemed reliable, but is not guaranteed and should be independently verified.

960 MORRISON DRIVE, SUITE 100, CHARLESTON, SC 29403 | 843.266.3900 | RAVENELCOMMERCIAL.COM