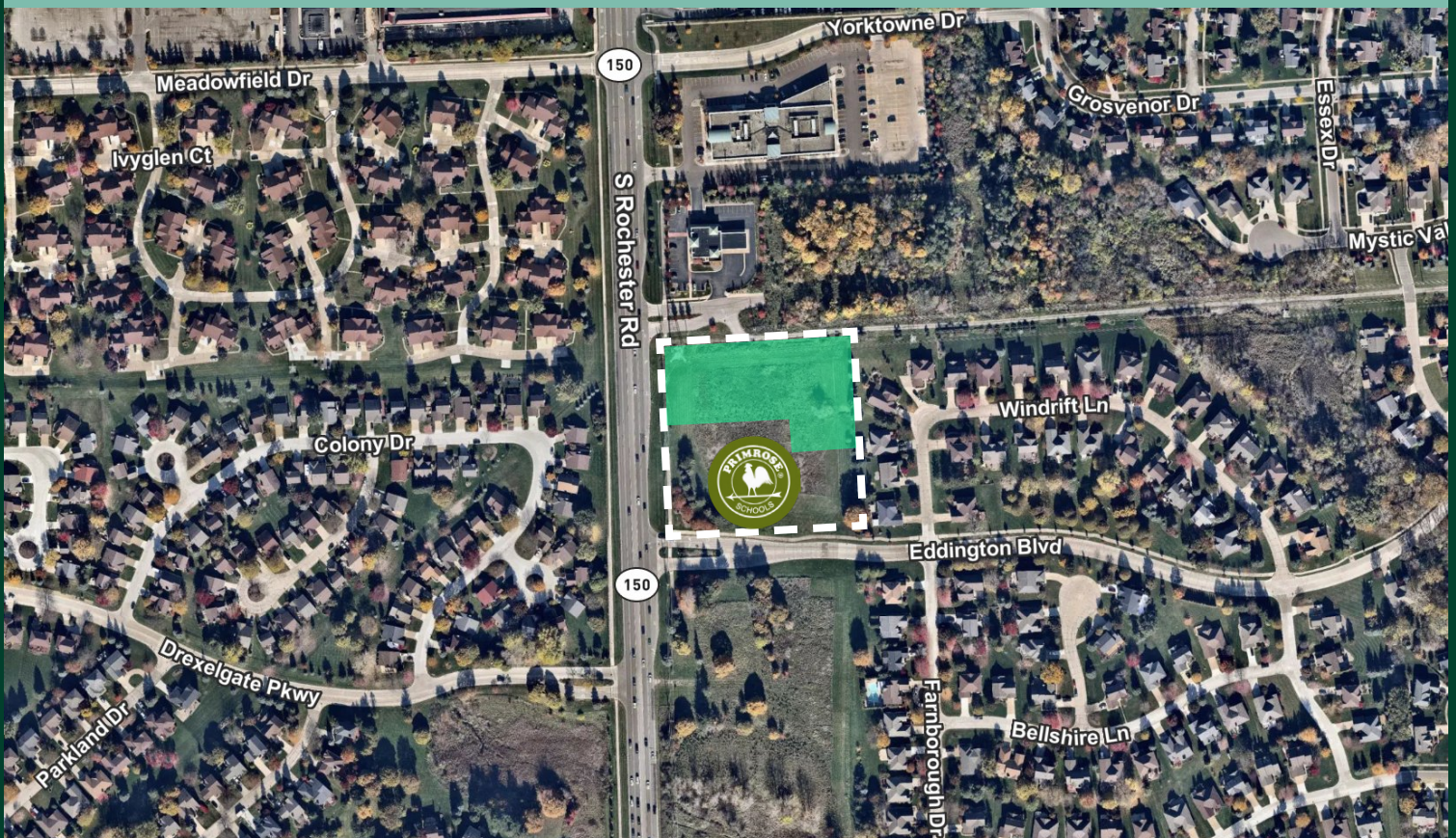


# 2.03 Acres

Rochester Road and Eddington

Rochester Road and Eddington  
Rochester Hills, MI  
[www.cbre.com/detroit](http://www.cbre.com/detroit)

Asking Price of \$1,100,000



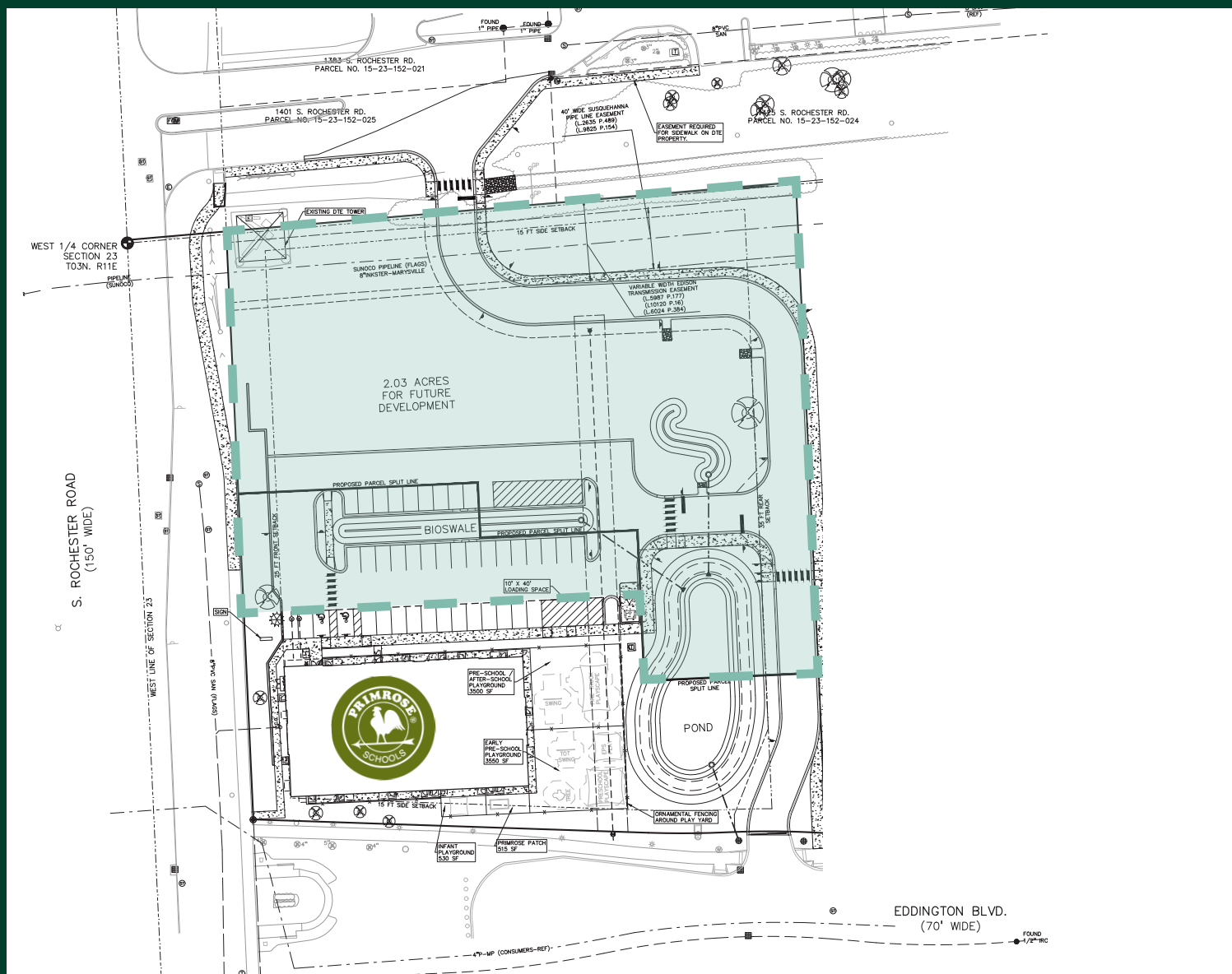
## Property Highlights

- +2.03 acres of land next to to-be-built Primrose School
- +Located in the flex business (FB) overlay district which allows for a broad array of uses
- +Visible by ~30,000 vehicles per day on Rochester Road
- +Site will be delivered rough graded with stubbed utilities
- +Detention designed and installed to accommodate up to an 8,000 SF building footprint

## Rochester Road and Eddington, Rochester Hills

# For Sale

# Site Plan



© 2024 CBRE, Inc. All rights reserved. This information has been obtained from sources believed reliable but has not been verified for accuracy or completeness. CBRE, Inc. makes no guarantee, representation or warranty and accepts no responsibility or liability as to the accuracy, completeness, or reliability of the information contained herein. You should conduct a careful, independent investigation of the property and verify all information. Any reliance on this information is solely at your own risk.

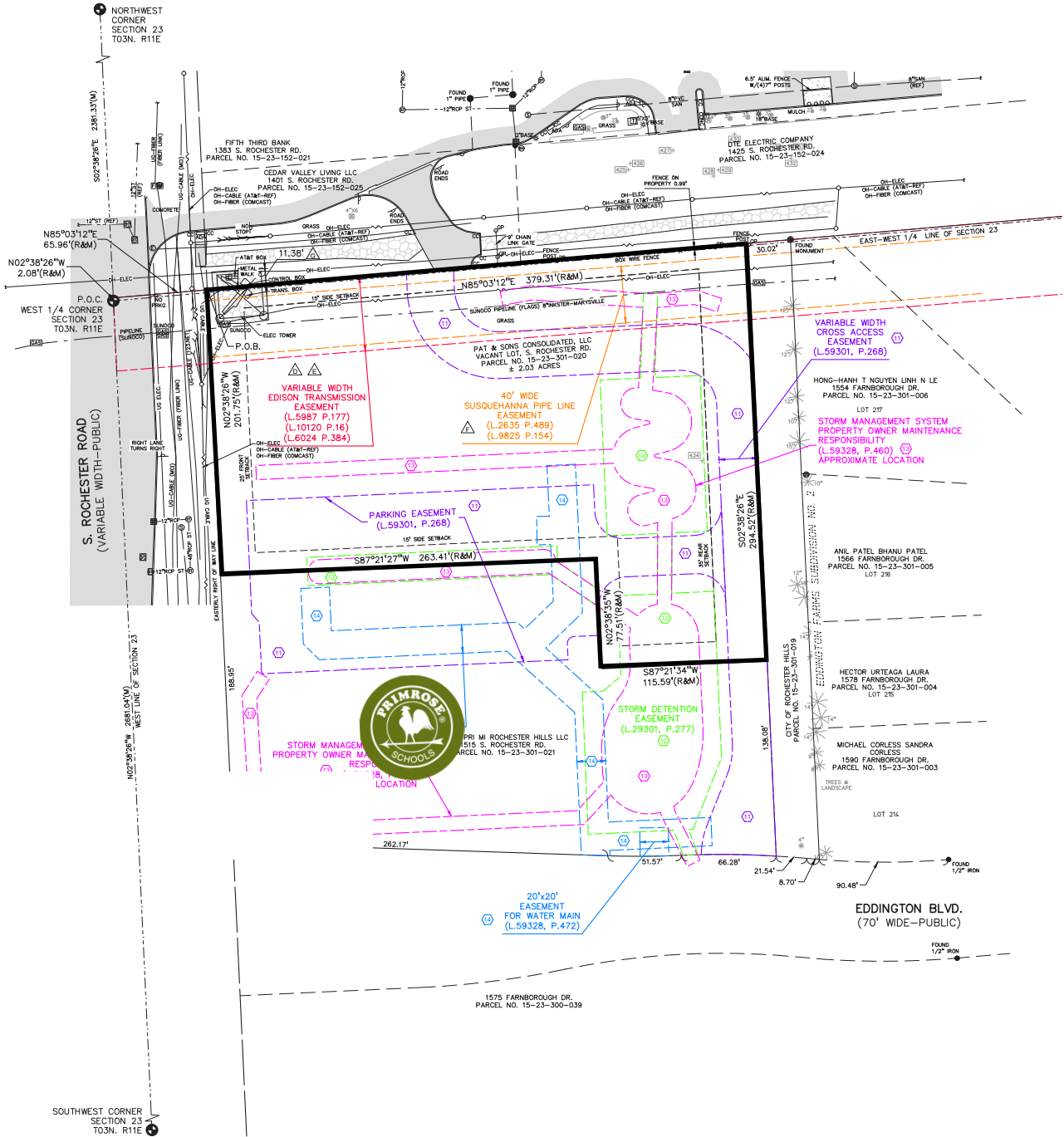


2.03 Acres

Rochester Road and Eddington, Rochester Hills

For Sale

# Survey



© 2024 CBRE, Inc. All rights reserved. This information has been obtained from sources believed reliable but has not been verified for accuracy or completeness. CBRE, Inc. makes no guarantee, representation or warranty and accepts no responsibility or liability as to the accuracy, completeness, or reliability of the information contained herein. You should conduct a careful, independent investigation of the property and verify all information. Any reliance on this information is solely at your own risk.

2.03 Acres

Rochester Road and Eddington, Rochester Hills

For Sale

# Nearby Amenities



## Contact Us

Edward Wujek  
Executive Vice President  
+1 248 351 2058  
edward.wujek@cbre.com

Kelly Cubbin  
Vice President  
+1 248 936 6852  
kelly.cubbin@cbre.com

[www.cbre.com/detroit](http://www.cbre.com/detroit)

**CBRE**