

32749 FRANKLIN ROAD
FRANKLIN, MICHIGAN

OFFICE FOR SALE OR LEASE

For Sale: 4,268 Square Feet

For Lease: 1,560 Square Feet



**SIGNATURE
ASSOCIATES**
KNOW SIGNATURE | KNOW RESULTS

RARE OPPORTUNITY



PROPERTY FEATURES

- 1,560 square feet for lease
- 4,268 square feet for sale
- Beautiful and well-maintained retail/office building in the heart of Franklin with 1,560 square feet of dental/office space currently available
- The refurbished red barn and shed are included in the sale and fully leased
- First floor of barn is 474 square feet of retail, second floor of barn is 474 square feet of office/residential, and loft of second floor barn is 200 square feet
- Lease Rate: \$3,800/month G+U
- Sale Price: \$1,200,000 (\$281.16/sq. ft.)



For more information, please contact:

JEFFREY TREPECK
(248) 359 0626

jtrepeck@signatureassociates.com

CHRIS MONSOUR
(248) 948 0107

cmonsour@signatureassociates.com

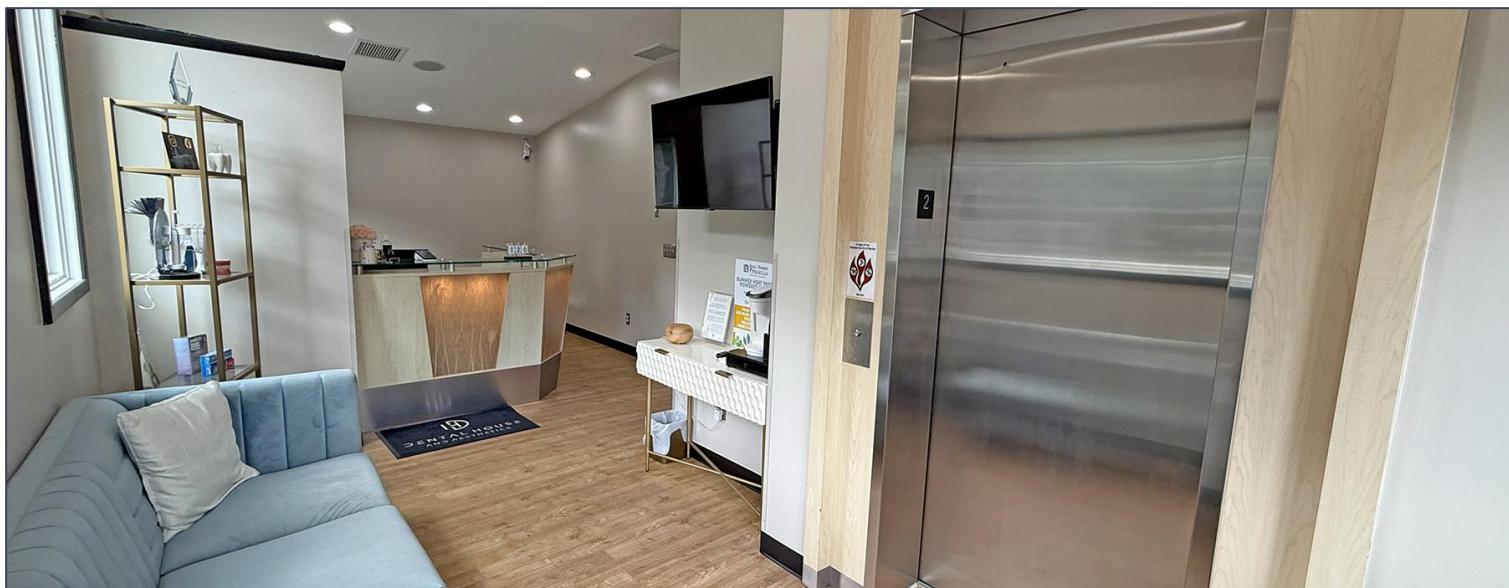
SIGNATURE ASSOCIATES
One Towne Square, Suite 1200
Southfield, MI 48076
www.signatureassociates.com

32749 Franklin Road – Franklin, Michigan

Office For Sale or Lease

For Lease –
1,560 SF

For Sale –
4,268 SF



For more information, please contact:

JEFFREY TREPECK

(248) 359 0626

jtrepeck@signatureassociates.com

CHRIS MONSOUR

(248) 948 0107

cmonsour@signatureassociates.com

SIGNATURE ASSOCIATES

One Towne Square, Suite 1200

Southfield, MI 48076

www.signatureassociates.com

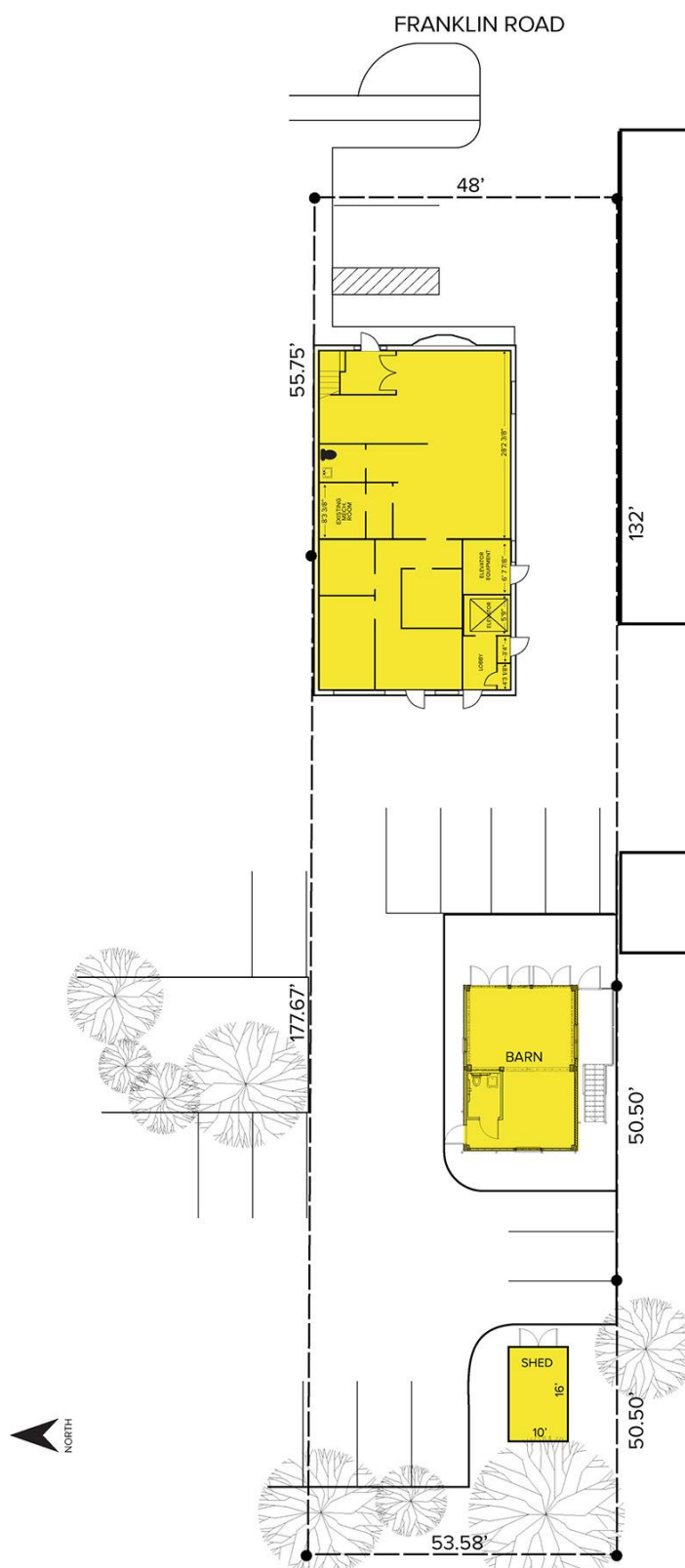
32749 Franklin Road – Franklin, Michigan

Office For Sale or Lease

For Lease –
1,560 SF

For Sale –
4,268 SF

Site Plan



For more information, please contact:

JEFFREY TREPECK

(248) 359 0626

jtrepeck@signatureassociates.com

CHRIS MONSOUR

(248) 948 0107

cmonsour@signatureassociates.com

SIGNATURE ASSOCIATES

One Towne Square, Suite 1200

Southfield, MI 48076

www.signatureassociates.com

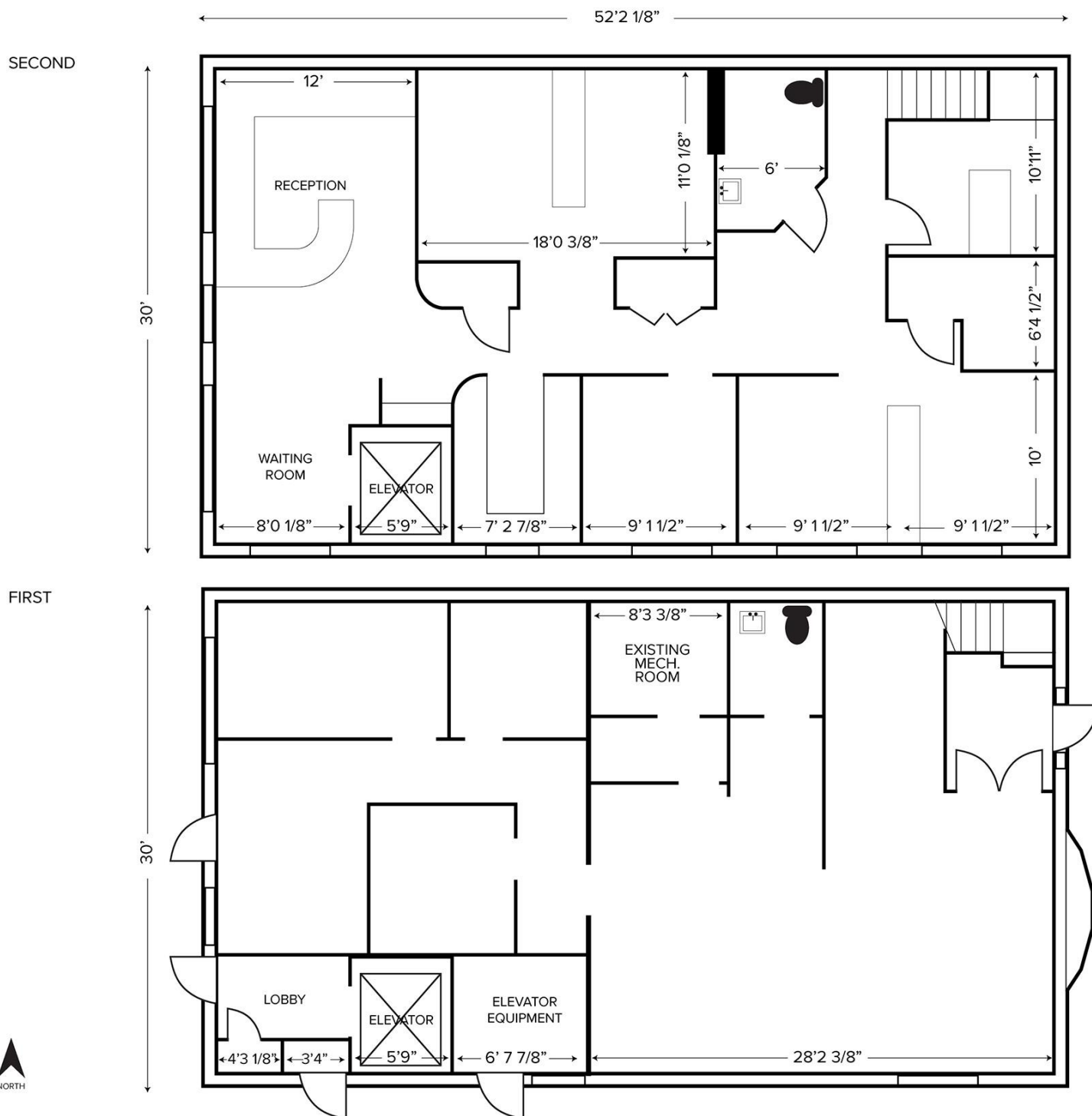
32749 Franklin Road – Franklin, Michigan

Office For Sale or Lease

For Lease –
1,560 SF

For Sale –
4,268 SF

Floor Plan



For more information, please contact:

JEFFREY TREPECK

(248) 359 0626

jtrepeck@signatureassociates.com

CHRIS MONSOUR

(248) 948 0107

cmonsour@signatureassociates.com

SIGNATURE ASSOCIATES

One Towne Square, Suite 1200

Southfield, MI 48076

www.signatureassociates.com

32749 Franklin Road – Franklin, Michigan

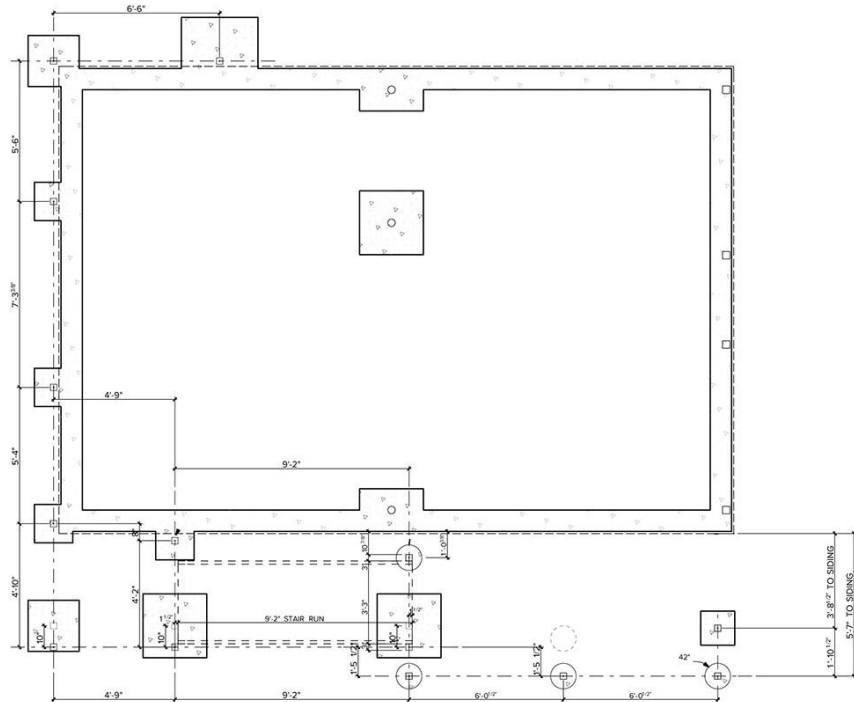
Office For Sale or Lease

For Lease –
1,560 SF

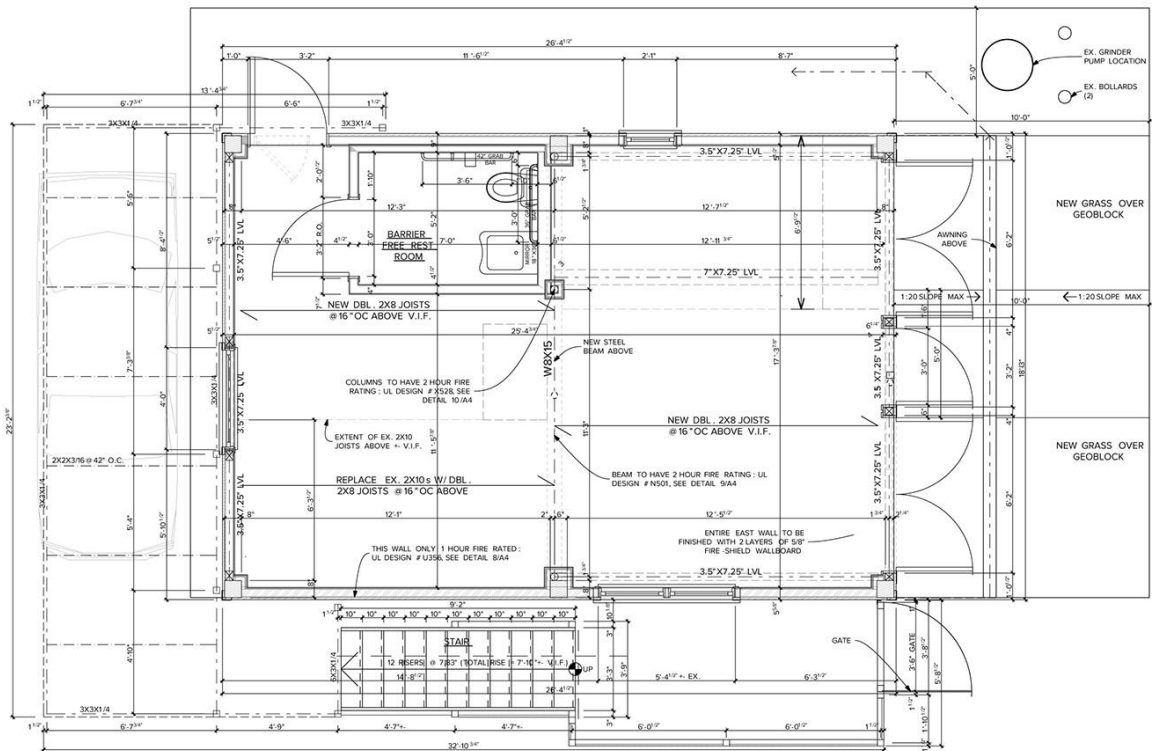
For Sale –
4,268 SF

Floor Plan

FOUNDATION



FIRST FLOOR



For more information, please contact:

JEFFREY TREPECK

(248) 359 0626

jtrepeck@signatureassociates.com

CHRIS MONSOUR

(248) 948 0107

cmonsour@signatureassociates.com

SIGNATURE ASSOCIATES

One Towne Square, Suite 1200

Southfield, MI 48076

www.signatureassociates.com

32749 Franklin Road – Franklin, Michigan

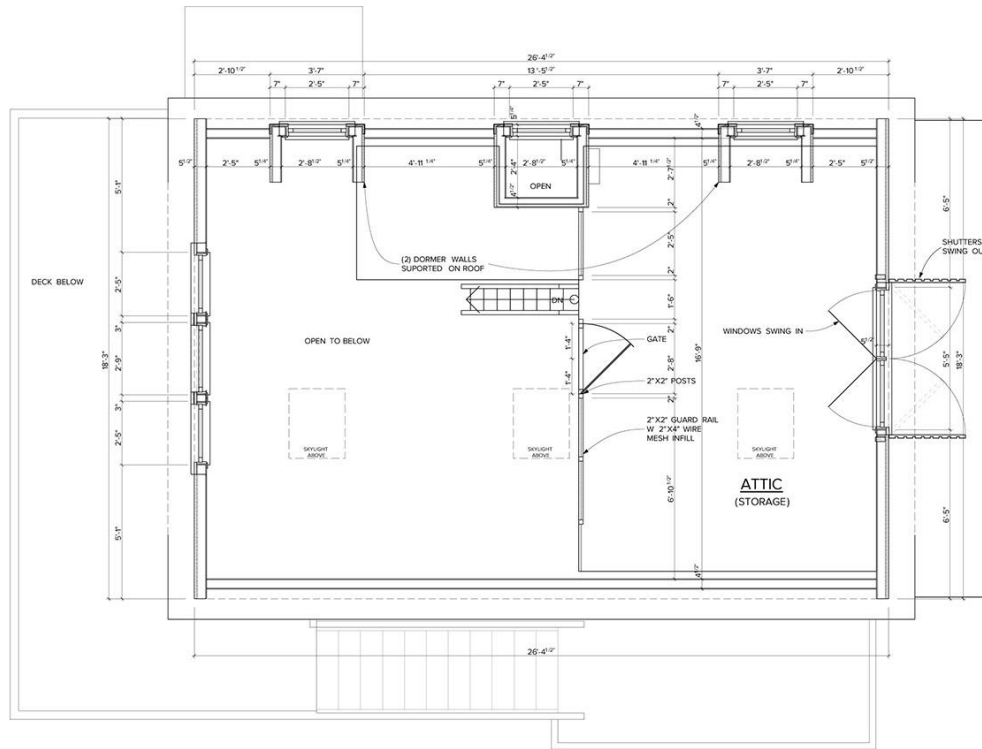
Office For Sale or Lease

For Lease –
1,560 SF

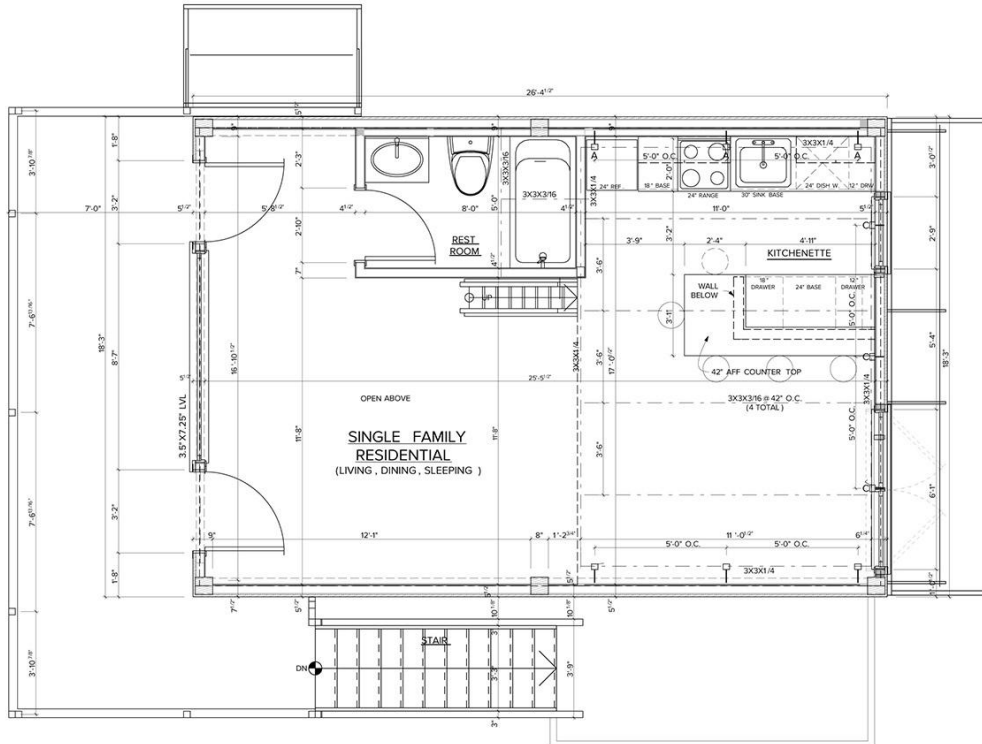
For Sale –
4,268 SF

Floor Plan

ATTIC



SECOND FLOOR



For more information, please contact:

JEFFREY TREPECK

(248) 359 0626

jtrepeck@signatureassociates.com

CHRIS MONSOUR

(248) 948 0107

cmonsour@signatureassociates.com

SIGNATURE ASSOCIATES

One Towne Square, Suite 1200

Southfield, MI 48076

www.signatureassociates.com

32749 Franklin Road – Franklin, Michigan

Office For Sale or Lease

For Lease –
1,560 SF

For Sale –
4,268 SF

Aerial



For more information, please contact:

JEFFREY TREPECK

(248) 359 0626

jtrepeck@signatureassociates.com

CHRIS MONSOUR

(248) 948 0107

cmonsour@signatureassociates.com

SIGNATURE ASSOCIATES

One Towne Square, Suite 1200

Southfield, MI 48076

www.signatureassociates.com

Information is subject to verification and no liability for errors or omissions is assumed. Price is subject to change and listing withdrawal.