



An aerial photograph of a large industrial facility. In the foreground, a long, single-story building with a white facade and a green horizontal stripe runs across the frame. The building has several large glass windows and doors. Above one of the entrances, a sign reads "NORTH SHORE". To the right, another sign says "NORTH SHORE" and "SERVICES". A parking lot with several cars is in front of the building. Behind the main building, there is a larger, more complex industrial structure with a grey roof and several smaller buildings. A large parking lot with many cars is visible to the right. The background is filled with trees and a clear blue sky.

FOR SALE OR LEASE
8,150 SF to 20,875 SF

-
- A map of the Dallas-Fort Worth area showing major highways and the location of the proposed airport site. The map includes Interstate 75 (I-75), Interstate 20 (I-20), Interstate 40 (I-40), Interstate 67 (I-67), and Interstate 30 (I-30). A red star labeled "SITE" is located near the intersection of I-30 and I-67, indicating the proposed location for a new airport. Other landmarks include the city of Fort Worth and the surrounding region.

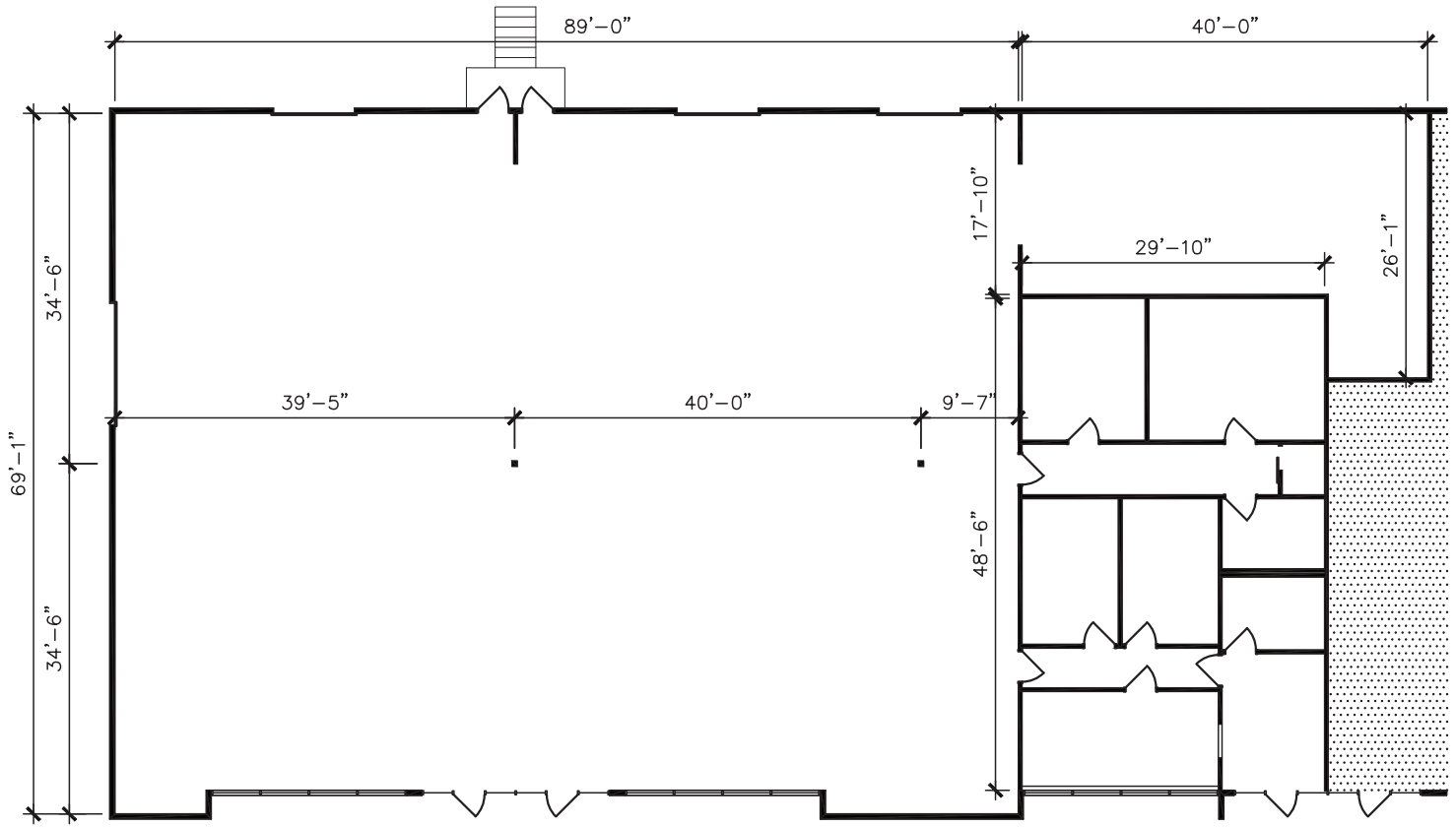
(636) 534-2904 | jhawley@blockhawley.com



A BLOCK REAL ESTATE SERVICES AFFILIATE

FLOOR PLAN & AERIAL

10 CENTRAL INDUSTRIAL DRIVE



No warranty or representation, expressed or implied, is made as to the accuracy of the information contained herein, and same is submitted subject to error and omissions.