

FOR LEASE OR SALE

# Walmart Outparcel

1.13-1.32 AC Available

RETAIL



## PROPERTY INFO

100 LINCOLN AVE,  
BEARDSTOWN, IL 62618  
STORE #1451

- + Walmart Outparcels Available
  - Three outparcels along I-125
- + C-2 Zoning
- + Nearby student population
  - Located 1 mile from Lincoln Land Community College with an enrollment of 14,000 students
  - Less than 2 miles from Beardstown High School
- + 10,500 average vehicles per day on IL-125



### Total Population

5 Minutes	4,364
10 Minutes	7,142
15 Minutes	9,808

### Number of Households

5 Minutes	1,576
10 Minutes	2,658
15 Minutes	3,774

### Average HH Income

5 Minutes	\$66,903
10 Minutes	\$67,499
15 Minutes	\$72,529

Source: Esri, 2024 Estimates

## CONTACT US

### Jim Sakanich

Senior Vice President  
+1 312 297 7690  
jim.sakanich@cbre.com

### Sean McCourt

Senior Vice President  
+1 312 297 7688  
sean.mccourt@cbre.com

### CBRE, Inc.

321 N Clark St  
Suite 3400  
Chicago, IL 60646

© 2019 CBRE, Inc. All rights reserved. This information has been obtained from sources believed reliable, but has not been verified for accuracy or completeness. You should conduct a careful, independent investigation of the property and verify all information. Any reliance on this information is solely at your own risk. CBRE and the CBRE logo are service marks of CBRE, Inc. All other marks displayed on this document are the property of their respective owners. Photos herein are the property of their respective owners. Use of these images without the express written consent of the owner is prohibited.

FOR LEASE OR SALE

# Walmart Outparcel

1.13-1.32 AC Available

RETAIL

 SITE PLAN



100 LINCOLN AVE, BEARDSTOWN, IL 62618

[www.cbre.us/walmart](http://www.cbre.us/walmart)

Walmart  
Realty 

CBRE

FOR LEASE OR SALE

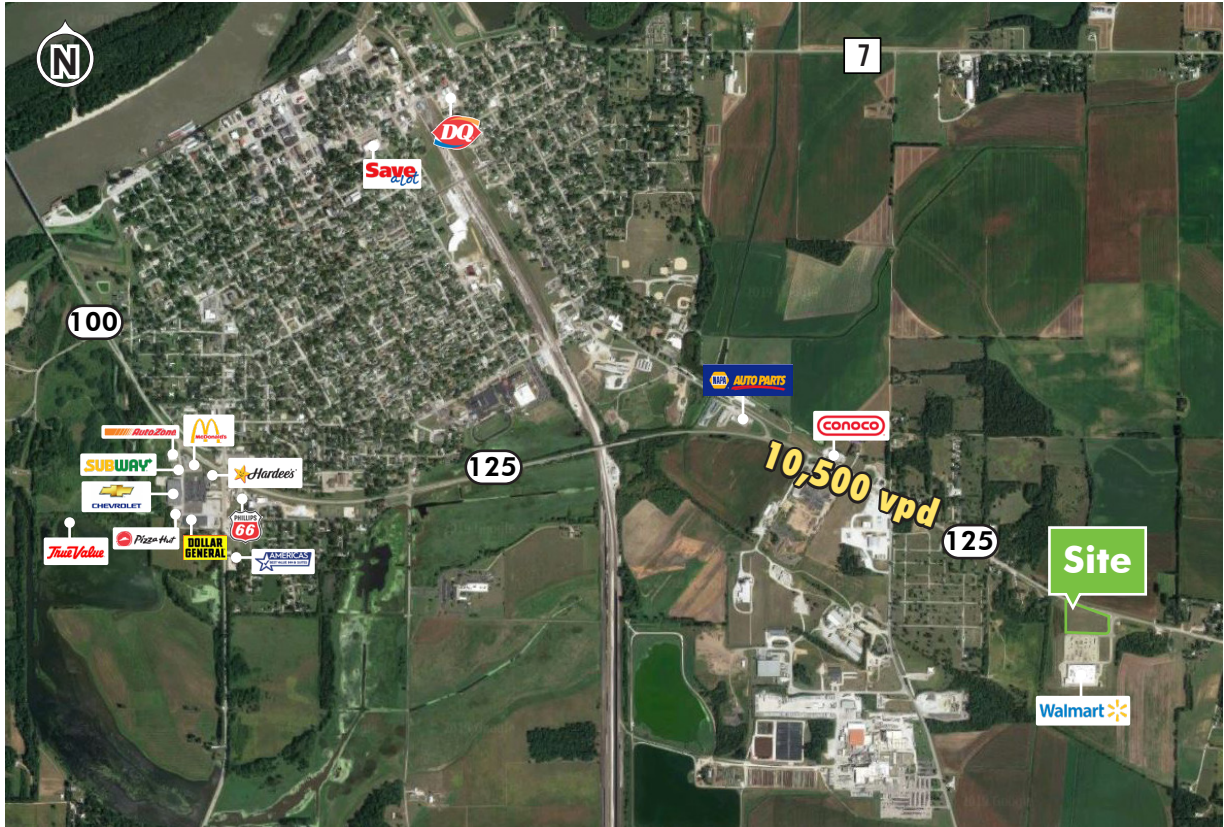
# Walmart Outparcel

1.13-1.32 AC Available

RETAIL



## RETAIL TRADE AREA



### Demographics

	1 Mile	3 Miles	5 Miles
Total Population	323	6,980	7,449
Number of Households	140	2,587	2,786
Average HH Income	\$77,251	\$66,355	\$68,002

Source: Esri, 2024 Estimates