

# Green Meadows Professional Center

# For Sale

737 W Green Meadows Dr, Greenfield, IN 46140

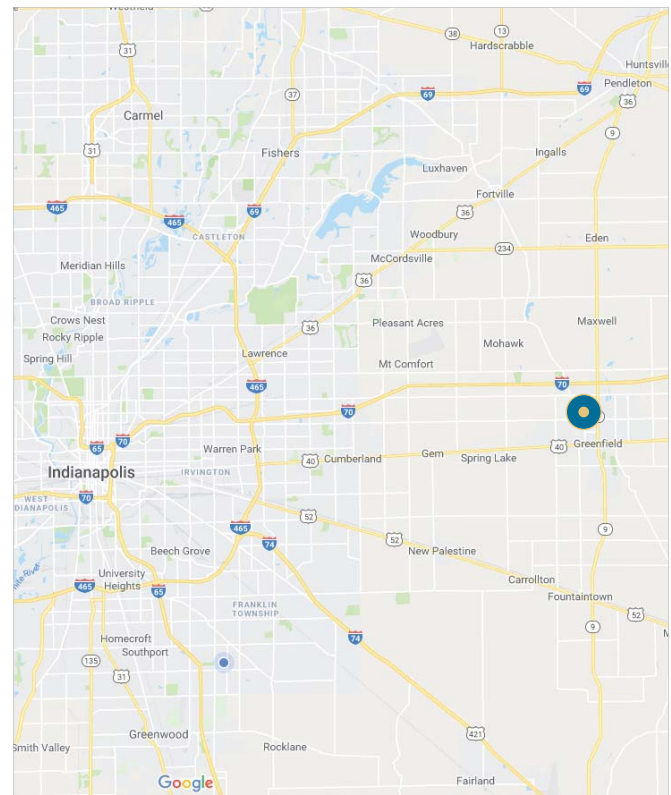


## PROPERTY OVERVIEW

- Available Space:
  - Suite 200: 1,750 SF - 2,165 SF
  - Suite 300: 2,672 SF
- Lease Rate: \$16/SF/NNN
- **Property For Sale, asking: \$2,200,000**
- High growth community
- Located in a strong professional services area
- Street signage available
- 2nd generation space allowing for an immediate occupancy date

## DEMOGRAPHICS

2018	1-Mile	1-Mile	5-Mile
Est. Population	4,421	23,923	30,966
Est. Households	1,863	9,634	12,387
Average HH Income	\$54,579	\$68,347	\$73,521



Matt Jackson  
mjackson@jacksonig.com  
317-340-3969

Terina Widner  
twidner@jacksonig.com  
317-903-2096



# Green Meadows Professional Center

For Lease

737 W Green Meadows Dr, Greenfield, IN 46140



Google Earth

Matt Jackson  
mjackson@jacksonig.com  
317-340-3969

Terina Widner  
twidner@jacksonig.com  
317-903-2096



# Green Meadows Professional Center

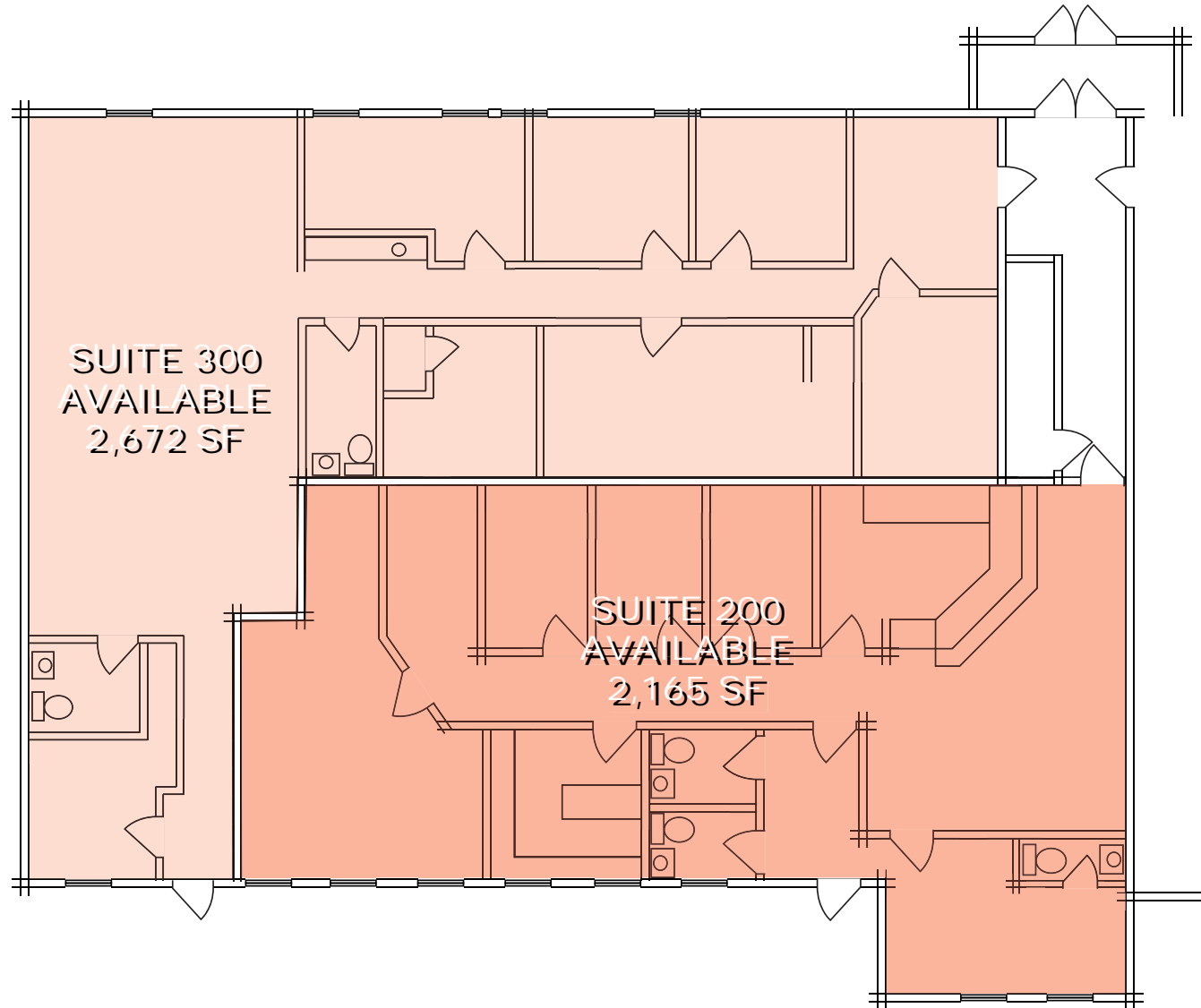
For Lease

737 W Green Meadows Dr, Greenfield, IN 46140

## Available Space

Suite 200: 2,572 SF

Suite 300: 1,750 - 2,165 SF



Matt Jackson  
mjackson@jacksonig.com  
317-340-3969

Terina Widner  
twidner@jacksonig.com  
317-903-2096



# Green Meadows Professional Center

For Lease

737 W Green Meadows Dr, Greenfield, IN 46140



W Green Meadows Dr

N Broadway St

FUTURE DEVELOPMENT

Matt Jackson  
mjackson@jacksonig.com  
317-340-3969

Terina Widner  
twidner@jacksonig.com  
317-903-2096

