

FOR LEASE

1,556 SF | \$2.00/SF/MO. NNN

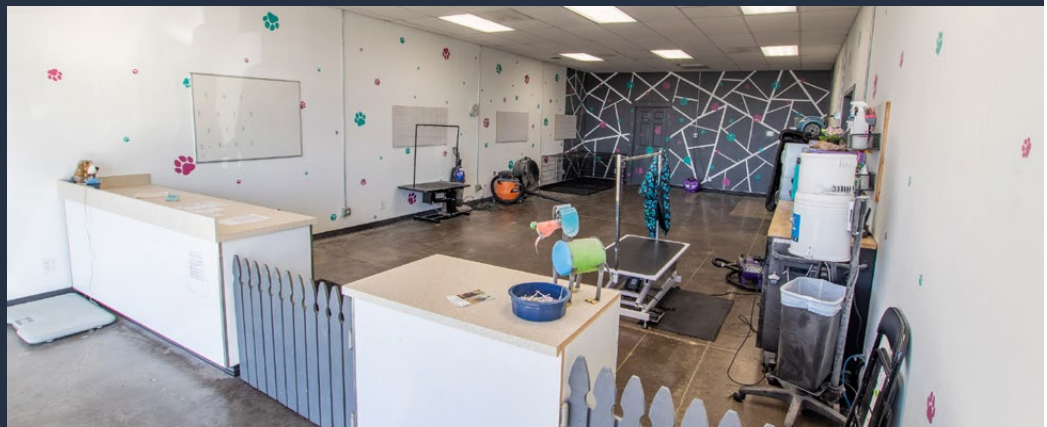
Redmond Cascade Plaza
Retail Space with Highway Frontage
2498 S Highway 97, Redmond, OR 97756



HIGH VISIBILITY LOCATION ON HIGHWAY 97



MONUMENT SIGN



Russell Huntamer, CCIM | Jay Lyons, SIOR, CCIM
Eli Harrison, Broker

600 SW Columbia St., Ste. 6100 | Bend, OR 97702

541.383.2444 | www.CompassCommercial.com

COMPASS
COMMERCIAL

**REAL
ESTATE
SERVICES**

FOR LEASE

\$2.00/SF/MO. NNN

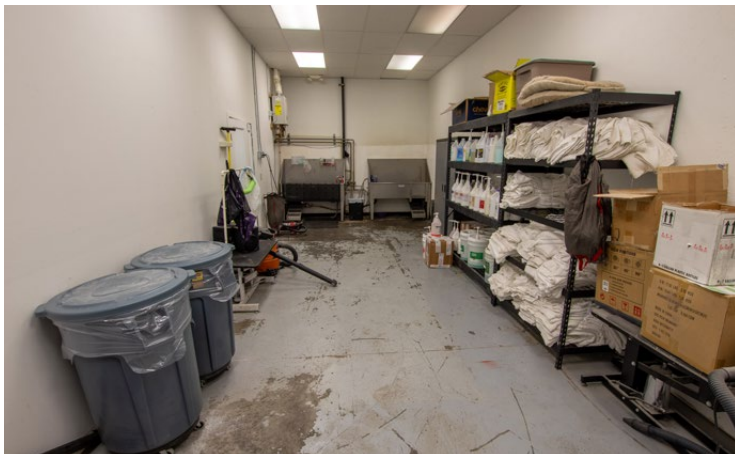
Retail Space with Highway Frontage

PROPERTY DETAILS

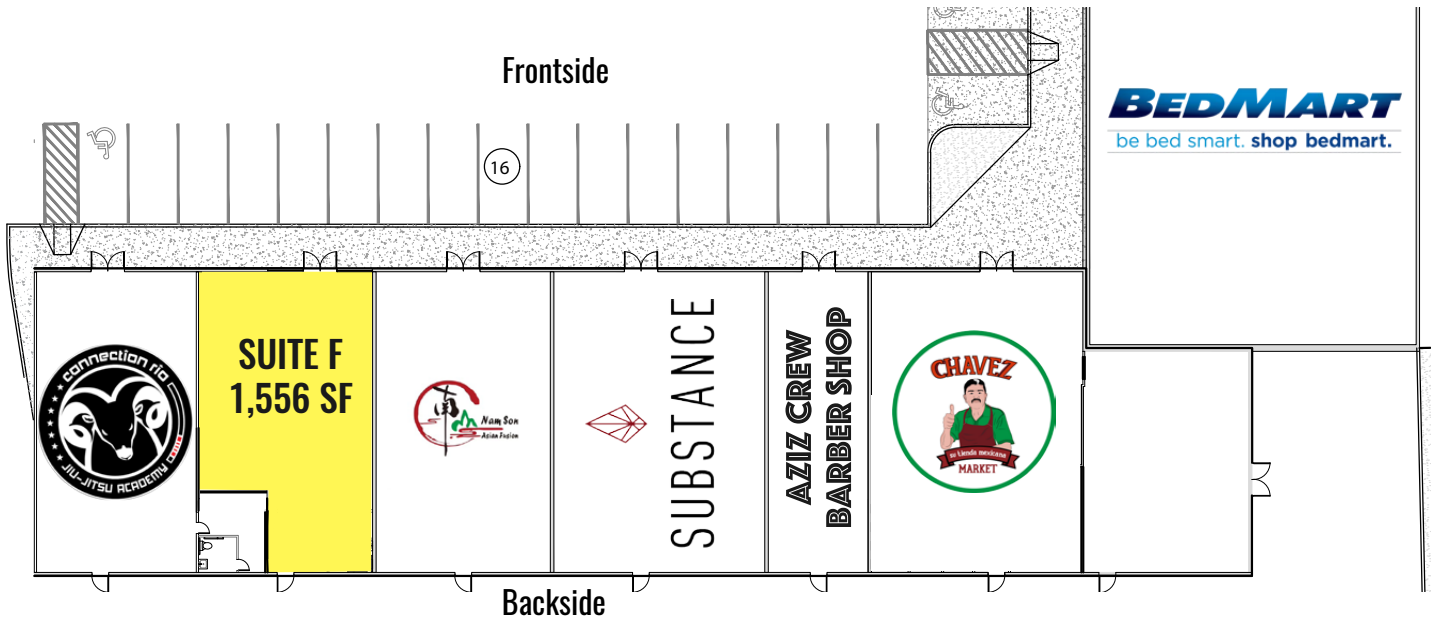
- Suite F:** 1,556 SF
- Lease Rate:** \$2.00/SF/Mo. NNN
- CAMs:** Est. at \$0.46/SF/Mo.
- Suite Layout:** Open retail storefront with large storage area, private office and restroom
- Available:** Within 30 days

HIGHLIGHTS

- Frontage and signage on Highway 97
- Co-tenants include Bedmart Mattress Superstore, Aziz Crew Barber Shop, Nam Son Asian Fusion, Substance, Connection Rio Brazilian Jiu-Jitsu, and Chavez Market
- Shadow-anchored by Wagner Square, which includes Grocery Outlet, Ross Dress for Less, Wilco Farm Store and the Redmond Cinema
- Daily traffic counts exceeding 28,076 on S Highway 97 (2022 TrafficMetrix)
- Monument and building signage
- Excellent parking and access



CASCADE PLAZA - SITE PLAN



FOR LEASE

2498 S Highway 97, Redmond, OR 97756



Brokers are licensed in the state of Oregon. This information has been furnished from sources we deem reliable, but for which we assume no liability. This is an exclusive listing. The information contained herein is given in confidence with the understanding that all negotiations pertaining to this property be handled through Compass Commercial Real Estate Services. All measurements are approximate.



Russell Huntamer, CCIM
Partner, Principal Broker
Cell 541.419.2634
rh@compasscommercial.com



Jay Lyons, SIOR, CCIM
Partner, Principal Broker
Cell 541.410.6519
jlyons@compasscommercial.com



Eli Harrison
Broker
Cell 541.977.2890
eharrison@compasscommercial.com

COMPASS
COMMERCIAL
REAL ESTATE
SERVICES