

626 S. WAYNE ROAD
WESTLAND, MICHIGAN

RETAIL FOR SALE
6,227 Square Feet Available



**SIGNATURE
ASSOCIATES**
KNOW SIGNATURE | KNOW RESULTS

REDEVELOPMENT OPPORTUNITY



PROPERTY FEATURES

- 6,227 available square feet
- Zoned CB-1B
- 80 parking spaces
- Built in 1965
- Sale Price: \$695,000 (\$111.61/sq. ft.)

Comments: Excellent mixed-use redevelopment / renovation opportunity for sale. 6,227 sq. ft. / 1.10 acres on Wayne Road across from Aldi. High traffic count. Great visibility and ample parking with (3) curb entrances.



For more information, please contact:

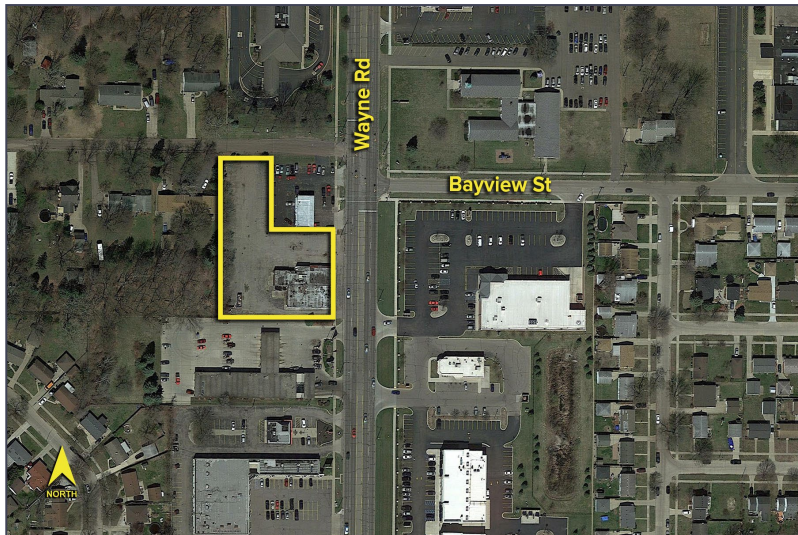
MARVIN PETROUS
(248) 359 0647
mpetrous@signatureassociates.com

SIGNATURE ASSOCIATES
One Towne Square, Suite 1200
Southfield, MI 48076
www.signatureassociates.com

626 S. Wayne Road – Westland, Michigan

Retail For Sale

6,227
Square Feet
AVAILABLE



DEMOGRAPHICS

	POPULATION	MED. HH INCOME
1 MILE	12,674	\$71,610
3 MILE	100,064	\$63,152
5 MILE	242,955	\$71,410

TRAFFIC COUNTS (TWO-WAY)

43,855	Wayne Rd. N. of Cherry Hill Rd. 2-Way
47,551	Wayne Rd. S. of Cherry Hills Rd. 2-Way
37,471	Cherry Hill Rd. W. of Wayne Rd. 2-Way
37,826	Cherry Hill Rd. E. of Wayne Rd. 2-Way



For more information, please contact:

MARVIN PETROUS
(248) 359 0647
mpetrous@signatureassociates.com

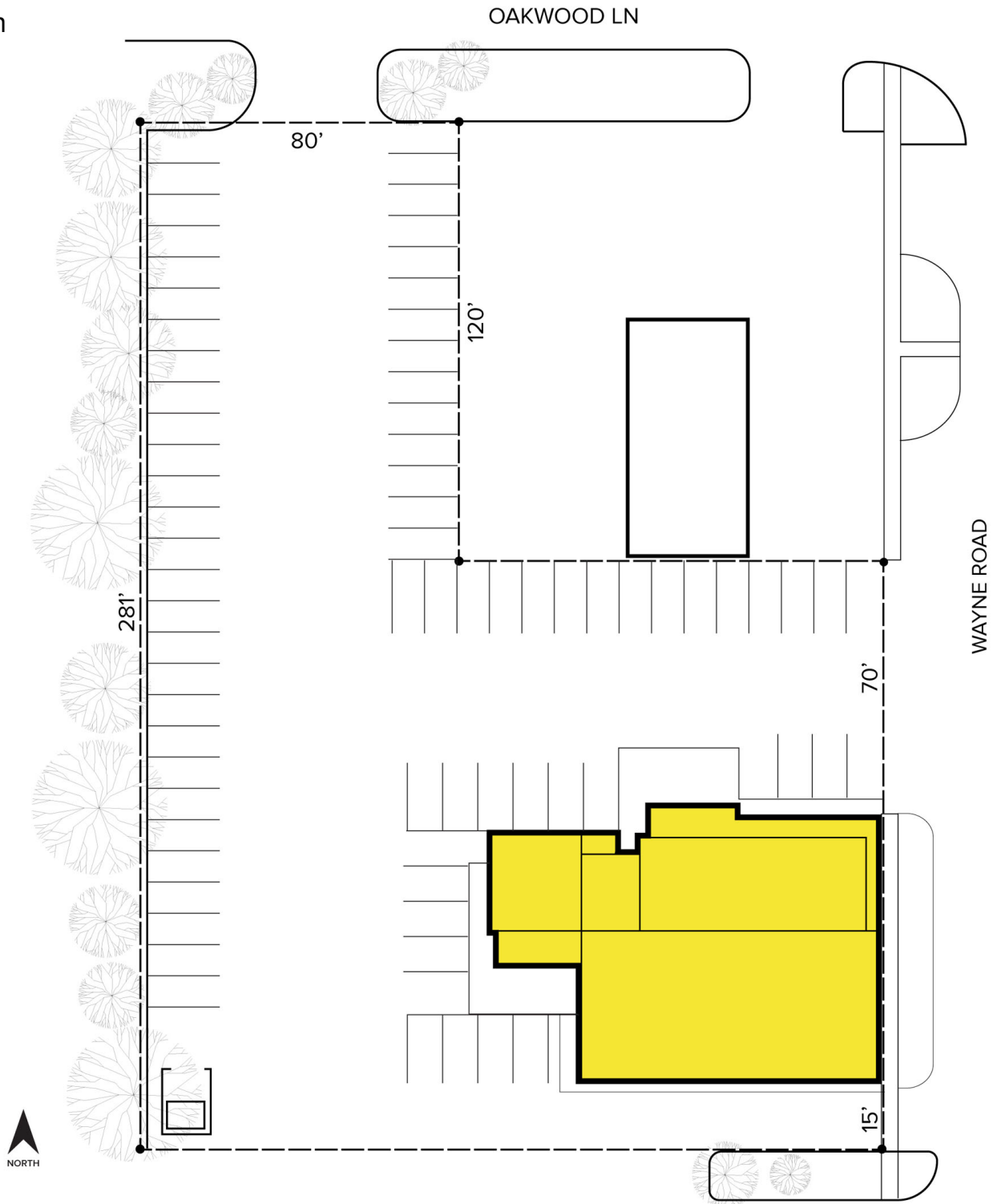
SIGNATURE ASSOCIATES
One Towne Square, Suite 1200
Southfield, MI 48076
www.signatureassociates.com

626 S. Wayne Road – Westland, Michigan

Retail For Sale

6,227
Square Feet
AVAILABLE

Site Plan



For more information, please contact:

MARVIN PETROUS
(248) 359 0647
mpetrous@signatureassociates.com

SIGNATURE ASSOCIATES
One Towne Square, Suite 1200
Southfield, MI 48076
www.signatureassociates.com