



25-22 Astoria Blvd

ASTORIA | QUEENS | NY

24,000+ SF Commercial Space with 80+ Parking Lot For Lease



COMPASS
COMMERCIAL

Space Details

The two-story building offers the first floor and basement for lease, featuring over 80 parking spaces. The first floor comprises 24,365 square feet, while the basement encompasses 8,544 square feet. Situated in the heart of Astoria on the main thoroughfare of Astoria Blvd, the property is conveniently located just a 5-9 minute walk from both the Astoria Blvd subway station and the 30 Ave subway station.

Location 25-18, 22 Astoria Blvd, Astoria, NY 11102

Block/Lot 573/32

Lot Dimensions 103 ft x 285.42 ft

Lot SF Basement 8,544 SF

1st Floor 24,365 SF

Zoning R6B, R6A, C2-3

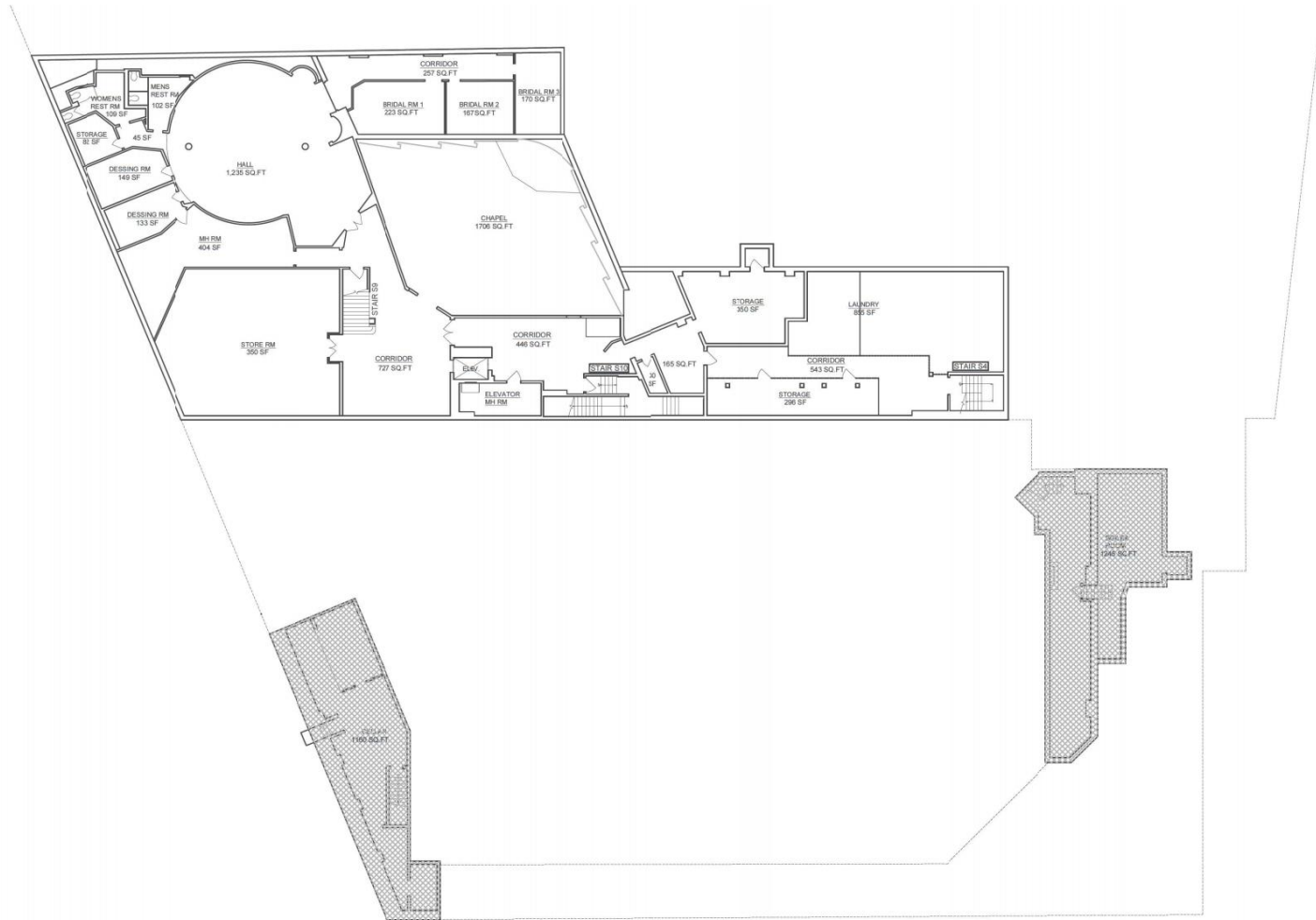
Year Built 1927

Ceiling Height 11'-14' FT

Asking Rent \$50 PSF NNN



Floor Plan-Basement



1 CELLAR FLOOR PLAN
SCALE: N.T.S.

Total 8,544 SF

Area Maps

Transit/Subway

Astoria Blvd (N/W Train)
30th Avenue (N/W Train)

Drive Walk Distance

2 min 5 min 0.2mi
3 min 9 min 0.4 mi



Why Astoria

Astoria, located in the NW corner of Queens, is a vibrant and diverse neighborhood with a rich history and plenty of attractions. The neighborhood is known for its Greek heritage, and visitors can explore the Museum of the Moving Image, the popular Bohemian Beer Garden, and the Astoria Park with beautiful views of the East River. Astoria is also home to a thriving arts and culture scene, with vintage boutiques, trendy restaurants, and galleries showcasing local artists. Public transportation options are abundant, making it easy to get to and from other parts of the city.

Asotria Demographics

118,959 residents in Astoria, with a median age of 35.9. The average annual household income in Astoria is \$106,441, while the median household income sits at \$82,597 per year. Residents aged 25 to 44 earn \$108,784, while those between 45 and 64 years old have a median wage of \$77,754.



	2 Mile	5 Miles	10 Miles
Population	519,734	3,056,922	7,625,705
Households	233,876	1,272,308	2,952,860
Median HH Income	\$95,249	\$840,953	\$74,038
Daytime Employees	166,281	1,961,781	3,492,336

CONTACT US

STEVE ZHU

steve.zhu@compass.com

917.569.8850

PETER HSING

peter@zhu-associates.com

646.617.7762



COMPASS
COMMERCIAL

All information supplied in this marketing presentation and/or flyer is from sources deemed reliable and is furnished subject to errors, omissions, modifications, removal of listings from sale/lease and to any listing condition. Any square footage, dimensions, floor plans and/or technical data set forth are approximations and are subject to further elaboration/confirmation.