

EXCLUSIVE INDUSTRIAL SUBLEASE 1000 S 2nd St, Plainfield, NJ



Immediate Availability | 15,000-40,000 SF | Rail Access Possible | Heavy Power

ACT NOW!

Secure this industrial space in central NJ.

[View Listing Website - Click Here →](#)

ANTHONY RITTWAGER, SIOR, CCIM
Anthony@advanceindustrial.com
609-454-6178

EAMES DROMIACK
Eames@advanceindustrial.com
609-454-0528

ANTHONY FRED A
Anthony.Freda@advanceindustrial.com
609-454-6477

Disclaimer: Information herein is confidential and for preliminary review only. Do not share without written consent from Advance Industrial Group. All data is unverified; potential lessees and buyers must perform their own due diligence. No warranties or endorsements are made. Subject to errors, omissions, or withdrawal without notice. Property tours by appointment only.

PRIME INDUSTRIAL SPACE FOR SUBLEASE



PROPERTY TYPE

Industrial Warehouse

AVAILABLE

Immediately

AVAILABLE SF

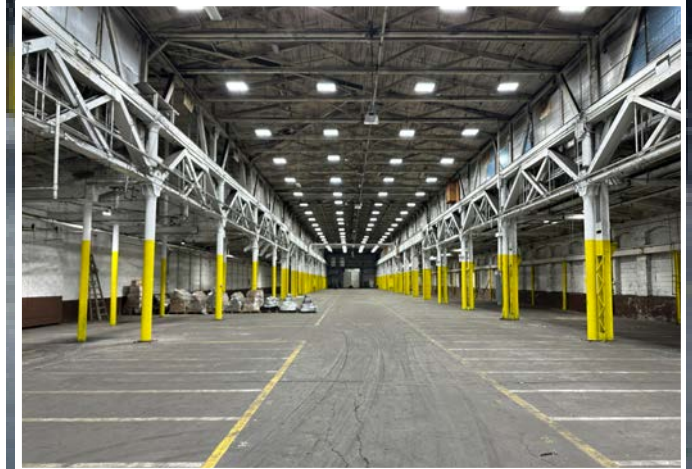
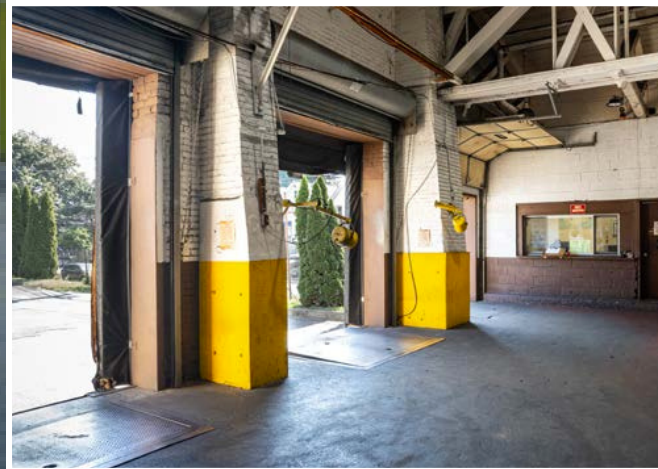
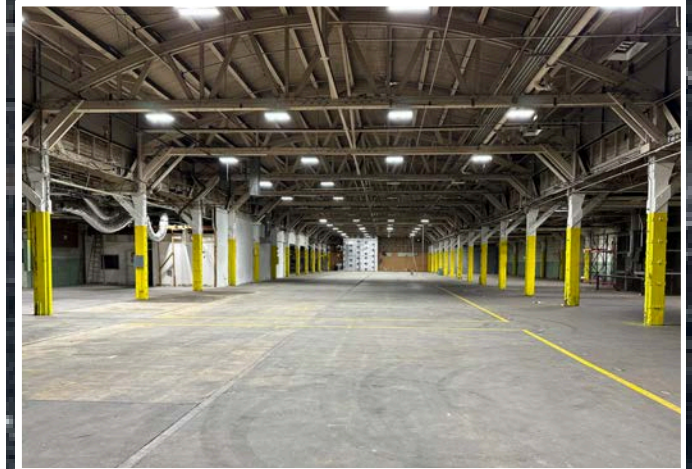
15,000-40,000 SF
(Divisible for Flexible Use)

FLEXIBLE TERM

Up to 5-Years with
Possible Renewal Option

HIGHLIGHTS

Possible Rail Road Access
24/7 Secure Gated Access
Paved & Fenced
Shared Loading Docks
1 Drive-In Door
18'-28' Clear Height
25'x50' Columns
Heavy Power Capacity
Office Space Available
Outdoor Storage & Parking



ANTHONY RITTWAGER, SIOR, CCIM
Anthony@advanceindustrial.com
609-454-6178

EAMES DROMIACK
Eames@advanceindustrial.com
609-454-0528

ANTHONY FRED A
Anthony.Freda@advanceindustrial.com
609-454-6477

Disclaimer: Information herein is confidential and for preliminary review only. Do not share without written consent from Advance Industrial Group. All data is unverified; potential lessees and buyers must perform their own due diligence. No warranties or endorsements are made. Subject to errors, omissions, or withdrawal without notice. Property tours by appointment only.

PRIME TRANSPORTATION HUB

Unmatched Access to Major Highways, Ports & Airports



INDUSTRIAL SYNERGY ZONE

Situated in Plainfield's thriving industrial corridor, surrounded by established logistics and manufacturing tenants — ideal for supply chain collaboration and scalable operations.

- ±32 miles to I-287
- ±35 miles to NJ Turnpike (Exit 10)
- ±11 miles to Garden State Parkway
- ±22 miles to EWR Airport
- ±25 miles to Port Newark/Elizabeth

ANTHONY RITTWAGER, SIOR, CCIM
Anthony@advanceindustrial.com
609-454-6178

EAMES DROMIACK
Eames@advanceindustrial.com
609-454-0528

ANTHONY FRED A
Anthony.Freda@advanceindustrial.com
609-454-6477

Disclaimer: Information herein is confidential and for preliminary review only. Do not share without written consent from Advance Industrial Group. All data is unverified; potential lessees and buyers must perform their own due diligence. No warranties or endorsements are made. Subject to errors, omissions, or withdrawal without notice. Property tours by appointment only.

SITE PLAN



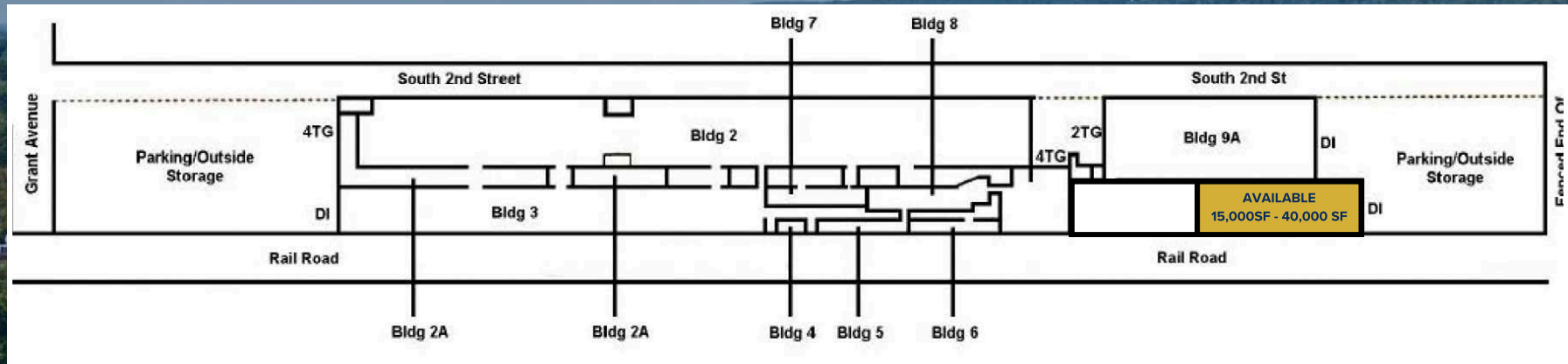
ANTHONY RITTWAGER, SIOR, CCIM
Anthony@advanceindustrial.com
609-454-6178

EAMES DROMIACK
Eames@advanceindustrial.com
609-454-0528

ANTHONY FRED A
Anthony.Freda@advanceindustrial.com
609-454-6477

Disclaimer: Information herein is confidential and for preliminary review only. Do not share without written consent from Advance Industrial Group. All data is unverified; potential lessees and buyers must perform their own due diligence. No warranties or endorsements are made. Subject or errors, omissions, or withdrawal without notice. Property tours by appointment only.

SITE PLAN



ANTHONY RITTWAGER, SIOR, CCIM
Anthony@advanceindustrial.com
 609-454-6178

EAMES DROMIACK
Eames@advanceindustrial.com
 609-454-0528

ANTHONY FRED A
Anthony.Freda@advanceindustrial.com
 609-454-6477

Disclaimer: Information herein is confidential and for preliminary review only. Do not share without written consent from Advance Industrial Group. All data is unverified; potential lessees and buyers must perform their own due diligence. No warranties or endorsements are made. Subject or errors, omissions, or withdrawal without notice. Property tours by appointment only.