



FOR LEASE

# 5 Walnut Grove Drive

Horsham, PA 19044

## Property Highlights

- Three-story building with atrium lobby and high-end finishes
- Outdoor sitting area with iron furniture and umbrellas
- Convenient access to numerous SEPTA stops
- On-site Beer Garden at 100 Lakeside
- On-site EV charging stations throughout campus
- On-site Fitness Center at 100 Lakeside
- Synergy at 100 Lakeside Conference Center
- Fully equipped conference facility at 200 Gibraltar



For information, please contact:

### Patrick Nowlan

Senior Managing Director  
t 610-755-6965  
patrick.nowlan@nmrk.com

### Justin Bell

Senior Managing Director  
t 610-755-6979  
justin.bell@nmrk.com

1000 Continental Drive  
Suite 200  
King of Prussia, PA 19406  
t 610-265-0600

[nmrk.com](http://nmrk.com)

# NEWMARK

Licensed in Pennsylvania as Newmark Real Estate

The information contained herein has been obtained from sources deemed reliable but has not been verified and no guarantee, warranty or representation, either express or implied, is made with respect to such information. Terms of sale or lease and availability are subject to change or withdrawal without notice.



**555 FLATS  
LUXURY LIVING  
0.6 MILES AWAY**



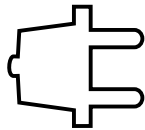
**SHOPPING AT THE  
UPPER DUBLIN  
PROMENADE  
1.8 MILES AWAY**



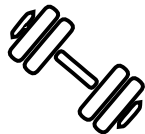
**FIVE DAYCARE  
FACILITIES UNDER  
5 MINUTES FROM  
THE OFFICE**



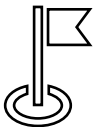
**PARKING:  
5.2/1,000**



**2,000 AMPS  
480/277 VOLTS**



**ACCESS TO OUR  
FITNESS CENTER  
LOCATED AT 100  
LAKESIDE DRIVE**



**QUICK ACCESS TO  
THE PA TURNPIKE,  
ROUTES 611 AND 63**



**ACCESS T THE 5-MILE  
HORSHAM POWERLINE  
TRAIL WITH OUTDOOR  
CIRCUITS**



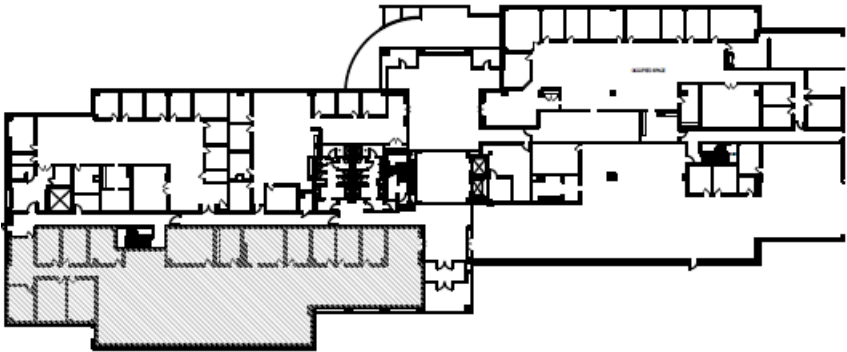
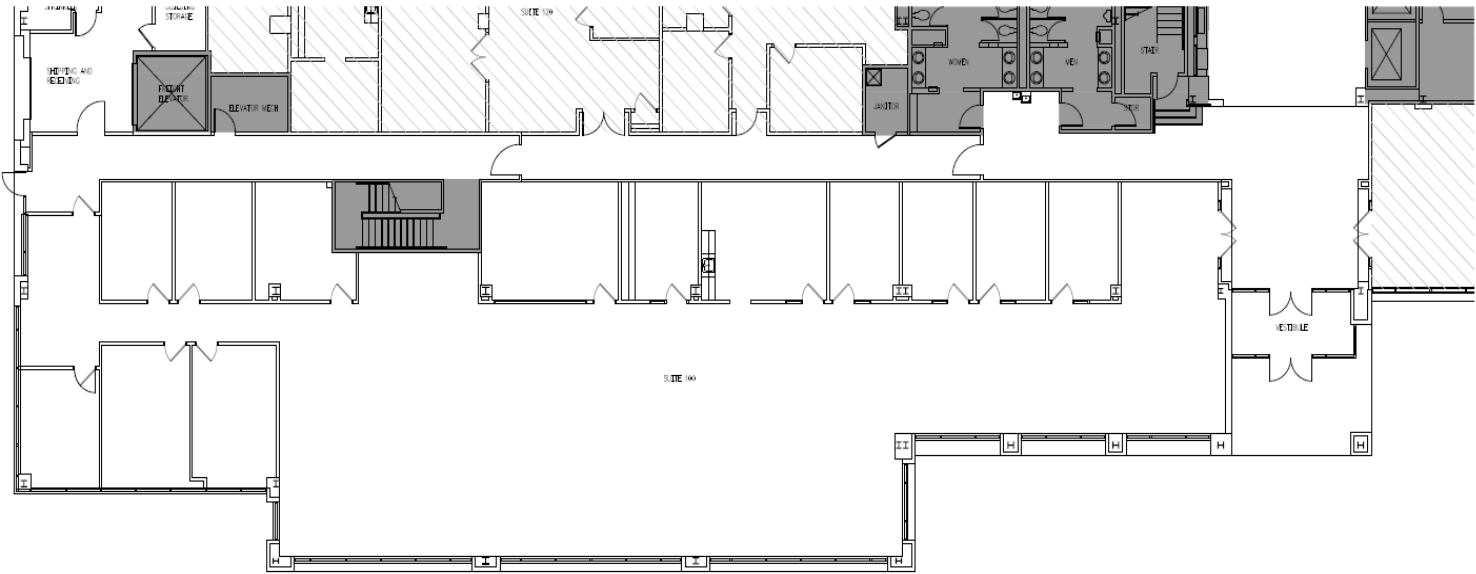


## Availabilities

Suite 100	8,658 SF
Suite 120	4,384 SF
Suite 130	3,155 SF
Suite 140	8,513 SF
Suite 160	7,750 SF
Suite 280	16,508 SF



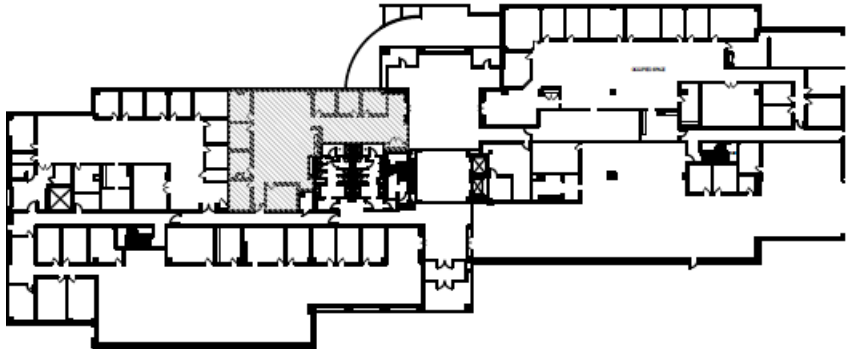
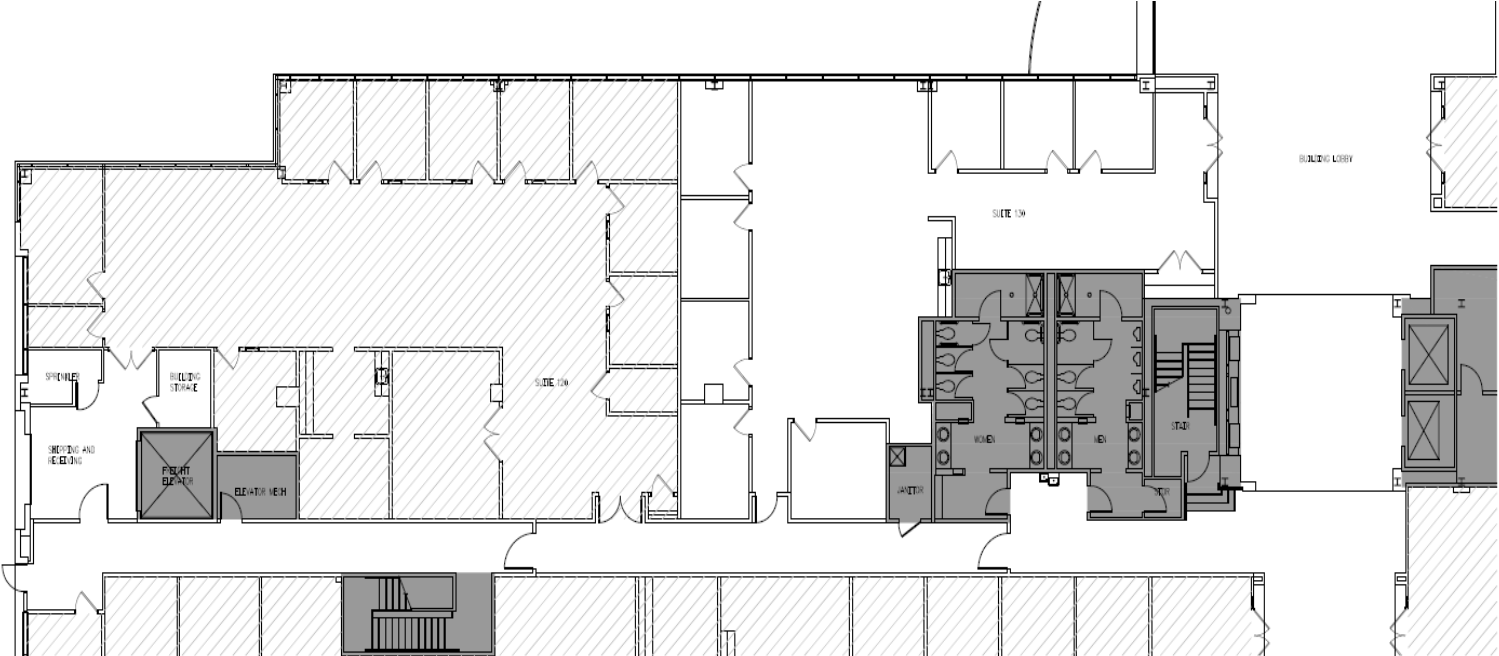
# Suite 100 – 8,658 SF



KEY PLAN - 1ST FLOOR

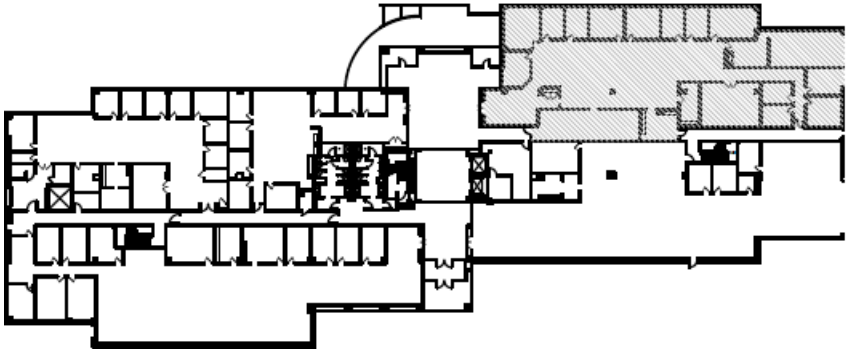
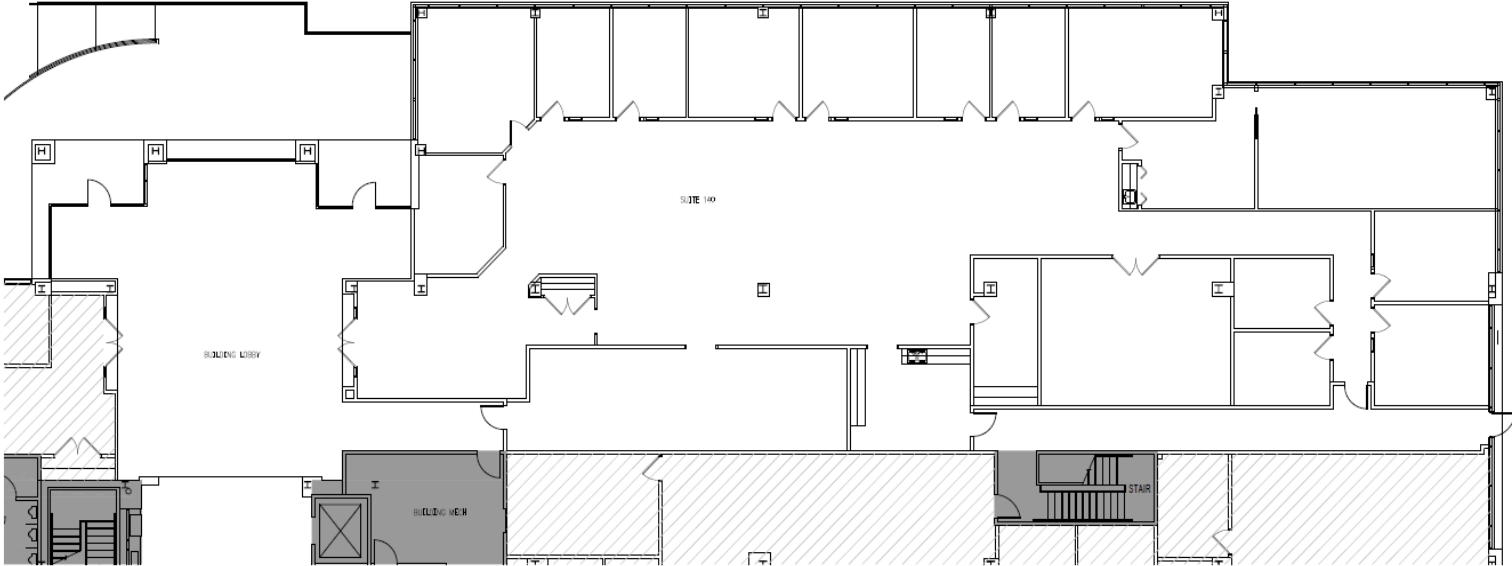


# Suite 130 – 3,155 SF



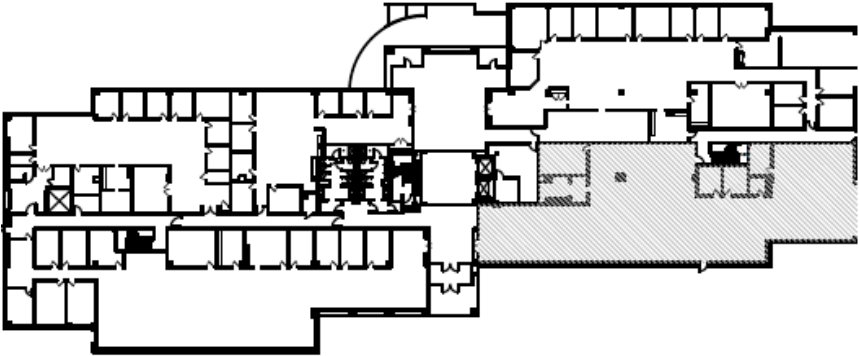
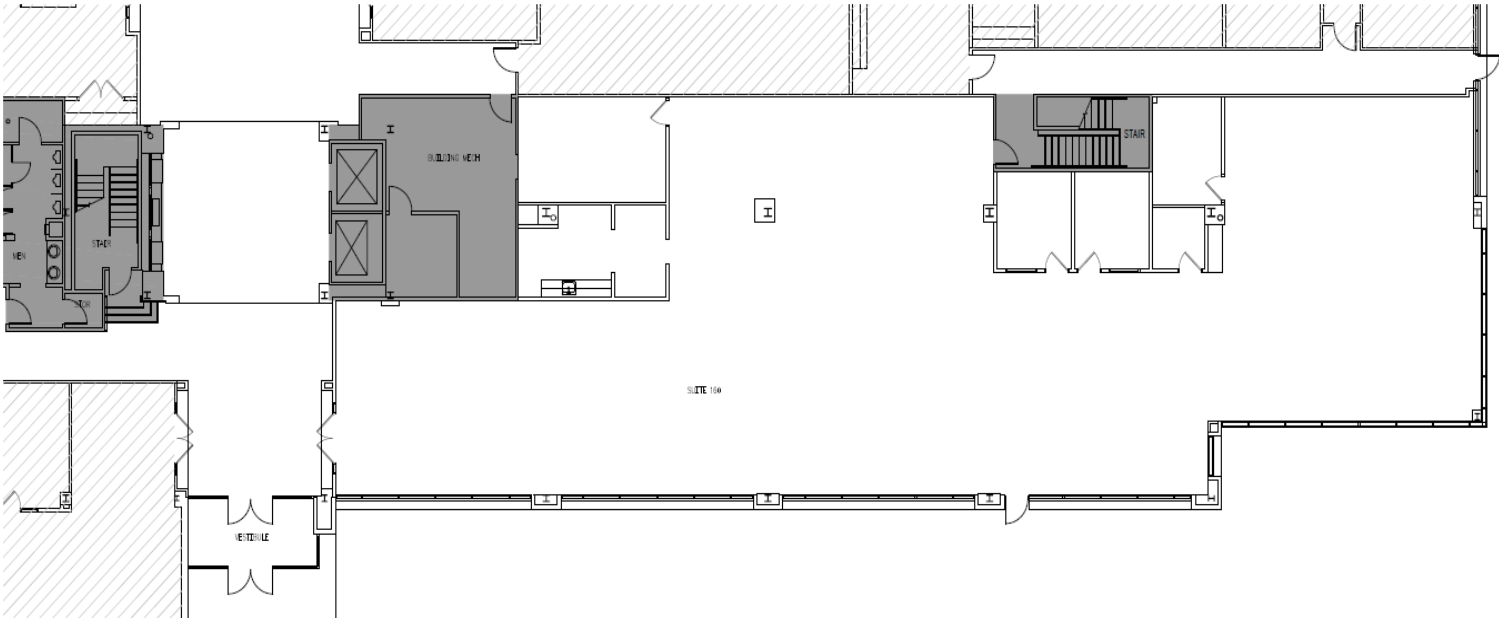
KEY PLAN - 1ST FLOOR

# Suite 140 – 8,513 SF



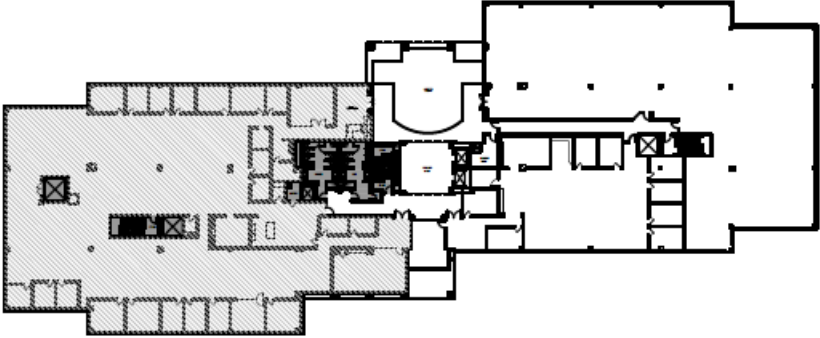
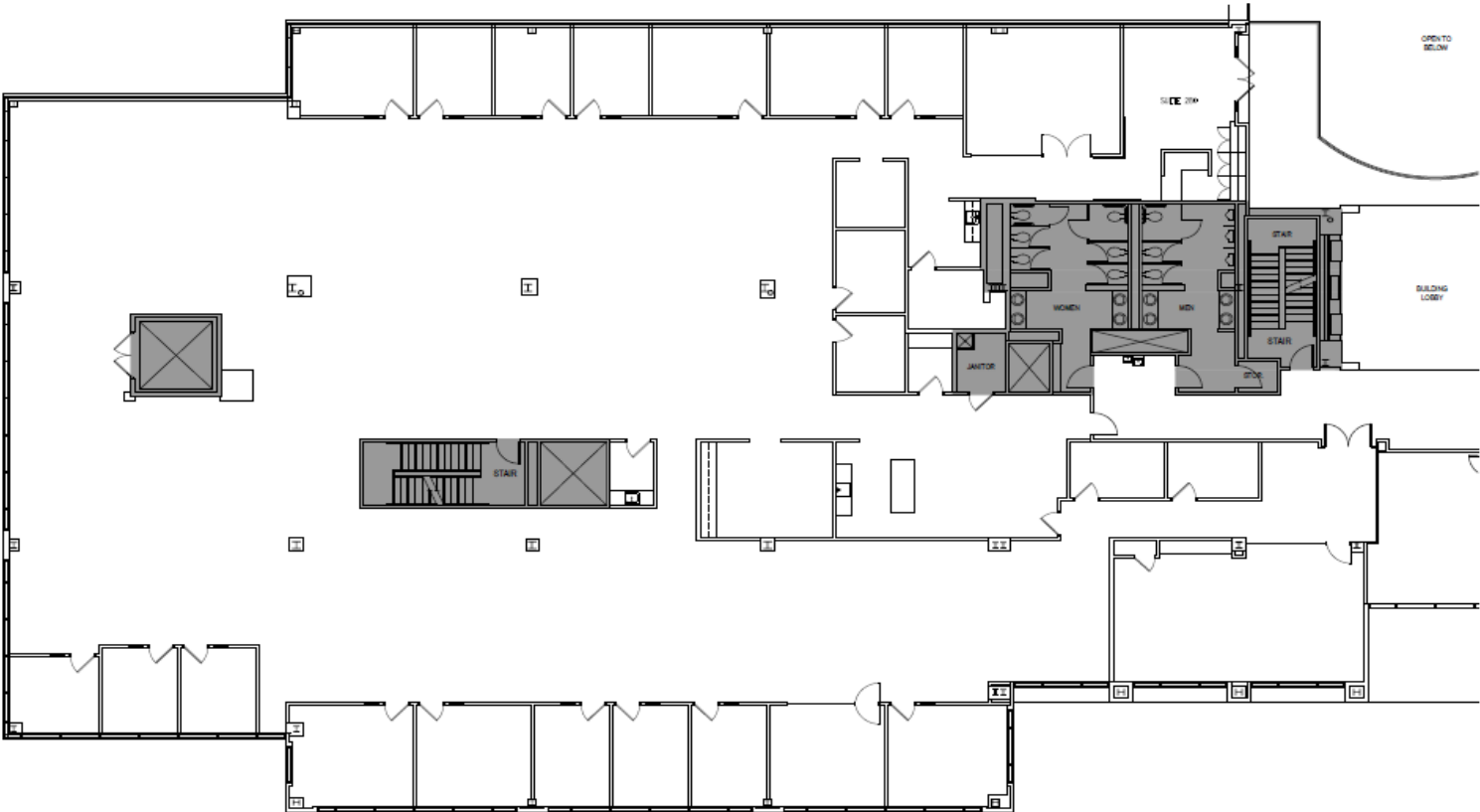
KEY PLAN - 1ST FLOOR

# Suite 160 – 7,750 SF



KEY PLAN - 1ST FLOOR

# Suite 280 – 16,508 SF



KEY PLAN - 2ND FLOOR