

MANUFACTURING BUILDING AND WAREHOUSE FOR LEASE
23619 NORTH 35TH DRIVE
GLENDALE, ARIZONA



23619 N 35TH DRIVE

- ±27,352 SF Building
- ±59,998 SF Lot
- ±4,778 SF Office
- Zoned CP/BP Phoenix
- Two docks & two grade level doors
- Fire Sprinklered
- 800A/3PH/277-480V electric
- Clear Height: 20'

Available November 1, 2025

LEASE RATE: \$1.25/SF NNN



MARK LINSALATA
PRINCIPAL, SIOR
D 602.912.3539
C 602.570.3226
mlinsalata@leearizona.com



NIC LINSALATA
ASSOCIATE
D 602.956.7777
C 480.278.1960
nlinsalata@leearizona.com

5090 North 40th Street, Suite 300 | Phoenix, Arizona 85018 | 602-956-7777 | www.leearizona.com

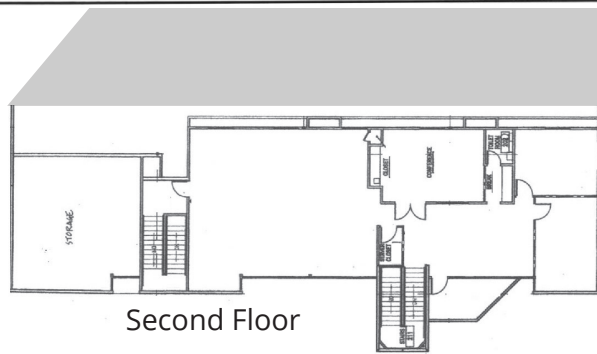
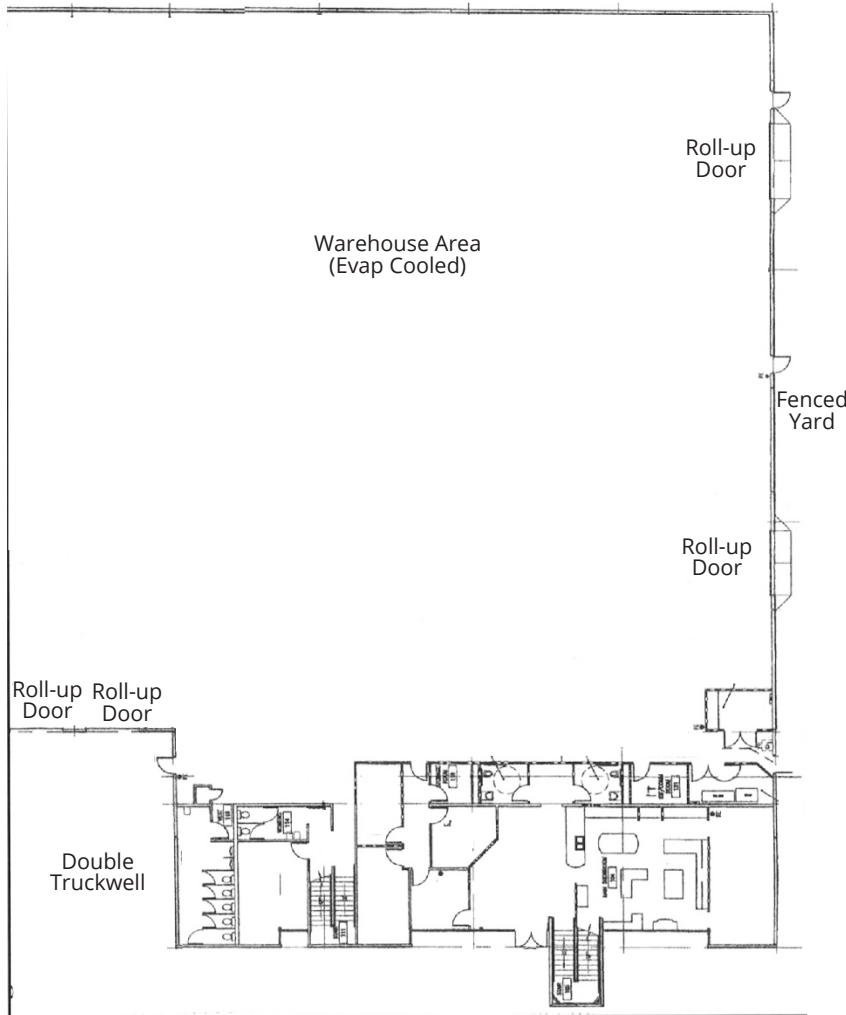
All information furnished regarding property for sale, rental or financing is from sources deemed reliable, but no warranty or representation is made to the accuracy thereof and same is submitted to errors, omissions, change of price, rental or other conditions prior to sale, lease or financing or withdrawal without notice. No liability of any kind is to be imposed on the broker herein.

MANUFACTURING BUILDING AND WAREHOUSE FOR LEASE
23619 NORTH 35TH DRIVE
GLENDALE, ARIZONA



23619 NORTH 35TH DRIVE

First Floor



5090 North 40th Street, Suite 300 | Phoenix, Arizona 85018 | 602-956-7777 | www.leeearizona.com

All information furnished regarding property for sale, rental or financing is from sources deemed reliable, but no warranty or representation is made to the accuracy thereof and same is submitted to errors, omissions, change of price, rental or other conditions prior to sale, lease or financing or withdrawal without notice. No liability of any kind is to be imposed on the broker herein.

MANUFACTURING BUILDING AND WAREHOUSE FOR LEASE
23619 NORTH 35TH DRIVE
GLENDALE, ARIZONA



5090 North 40th Street, Suite 300 | Phoenix, Arizona 85018 | 602-956-7777 | www.leeearizona.com

All information furnished regarding property for sale, rental or financing is from sources deemed reliable, but no warranty or representation is made to the accuracy thereof and same is submitted to errors, omissions, change of price, rental or other conditions prior to sale, lease or financing or withdrawal without notice. No liability of any kind is to be imposed on the broker herein.