



FOR **LEASE**

VALLEY BUSINESS PARK

1107 MIDDLE RIVER ROAD | MIDDLE RIVER, MARYLAND 21220

**2,800 SF
AVAILABLE**



MACKENZIE
COMMERCIAL REAL ESTATE SERVICES, LLC

PROPERTY OVERVIEW

HIGHLIGHTS:

- Great small bay warehouse space
- Ample surface parking
- Easy/convenient access to I-695 and I-95 and Routes 43, 40 & 7
- Close proximity to White Marsh Town Center and its many amenities

AVAILABLE:

2,800 SF W/
TWO 12'x12' DRIVE-INS

ZONING:

ML IM
(MANUFACTURING, LIGHT)
[INDUSTRIAL, MAJOR DISTRICT]
*Acceptable uses include assembly,
distribution, warehouse storage,
contractors office*

RENTAL RATE:

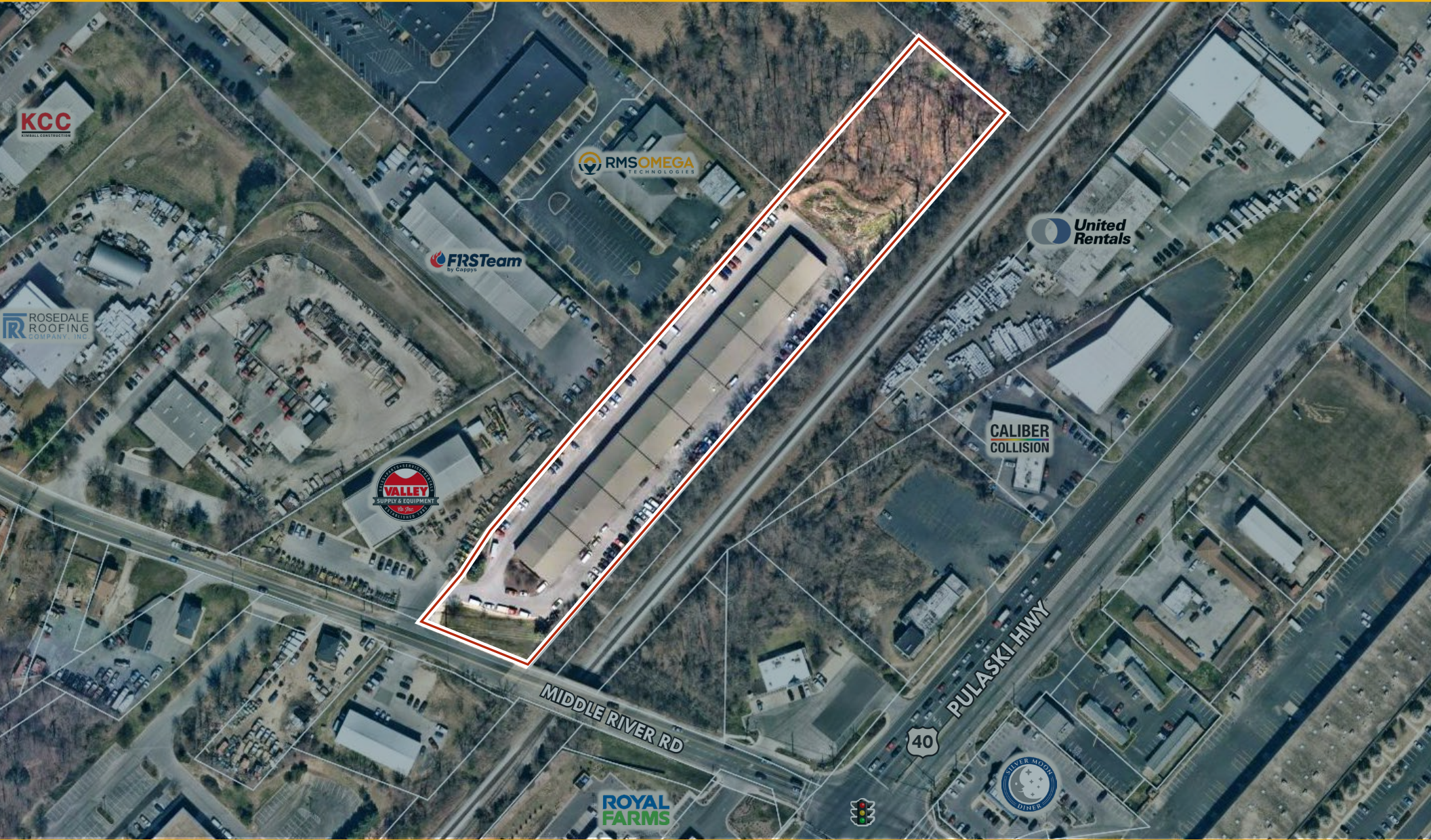
NEGOTIABLE



GOOGLE STREET VIEW



AERIAL



LOCAL BIRDSEYE





FOR MORE INFO **CONTACT:**



DANIEL HUDAK, SIOR

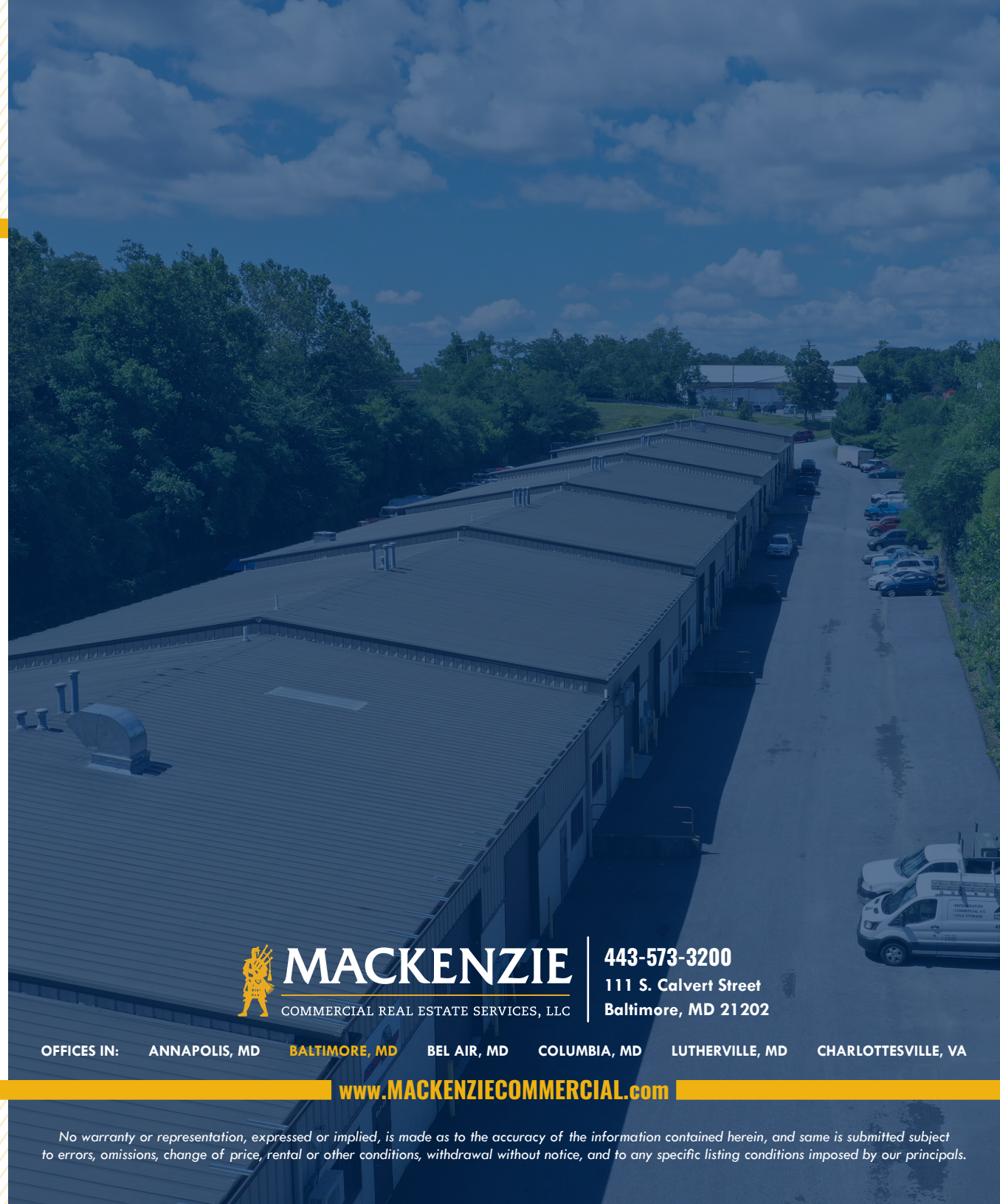
SENIOR VICE PRESIDENT & PRINCIPAL

443.573.3205

DHUDAK@mackenziecommercial.com



VISIT **PROPERTY PAGE** FOR MORE INFORMATION.



MACKENZIE

COMMERCIAL REAL ESTATE SERVICES, LLC

443-573-3200

**111 S. Calvert Street
Baltimore, MD 21202**

OFFICES IN: ANNAPOLIS, MD **BALTIMORE, MD** BEL AIR, MD COLUMBIA, MD LUTHERVILLE, MD CHARLOTTESVILLE, VA

www.MACKENZIECOMMERCIAL.com

No warranty or representation, expressed or implied, is made as to the accuracy of the information contained herein, and same is submitted subject to errors, omissions, change of price, rental or other conditions, withdrawal without notice, and to any specific listing conditions imposed by our principals.