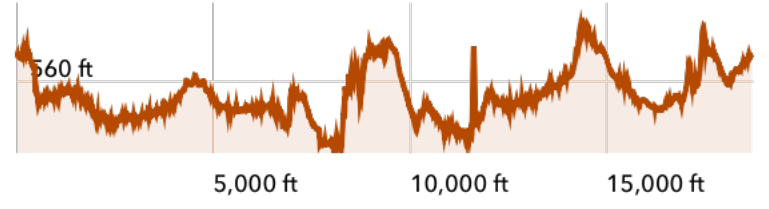
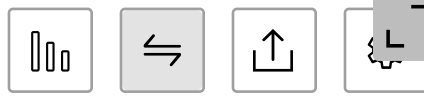


Interactive Parcel App

This application will allow you to browse and view spatial information related to Monroe County and it's associated municipalities.

This application should not be used to determine property boundaries, please contact your local town assessor or the Monroe County



Elevation (Reference)

Parcels

Print template

Results

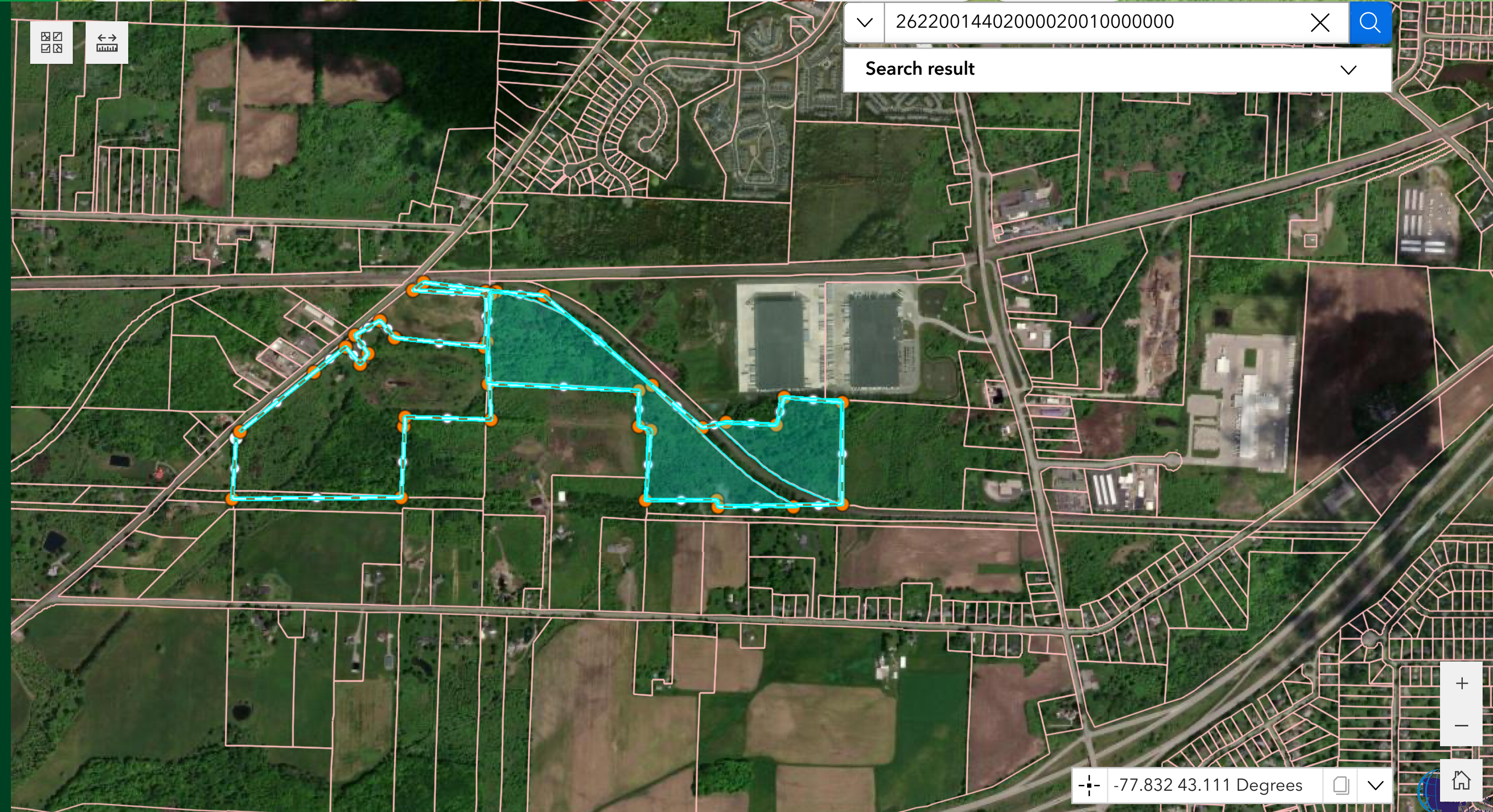
Template

A3 Landscape

Title

Show print area

Print



26220014402000020010000000

Search result

-77.832 43.111 Degrees