

SPECIAL PURPOSE FOR SALE

1300 FOSTER AVENUE

Bridgeport, WA 98813



PROPERTY DESCRIPTION

Investment Opportunity! This expansive building, boasting over 9,000 square feet across its main floor and basement, presents a unique opportunity for a variety of potential uses. Situated in the heart of central Bridgeport, its prime location is in close proximity to schools, downtown, and other community amenities. This large building, with its well-designed layout, Community kitchen centrally located, diverse spaces, and strategic location, presents a unique opportunity for individuals or organizations seeking a property with great potential. Its adaptability and prime location make it an ideal canvas for realizing a wide range of visions, from a thriving community center to a dynamic and modern place of worship.

OFFERING SUMMARY

Sale Price:	\$395,000
Building Size:	+/- 9,582 SF
	+/-1.29 Acres
APNs - 3 Parcels:	#00205100100, #02100600001, #00205600501

DEMOGRAPHICS	1 MILE	2 MILES	3 MILES
Total Households	645	826	864
Total Population	2,085	2,638	2,719
Average HH Income	\$47,796	\$47,414	\$47,045

We obtained the information above from sources we believe to be reliable. However, we have not verified its accuracy and make no guarantee, warranty or representation about it. It is submitted subject to the possibility of errors, omissions, change of price, rental or other conditions, prior sale, lease or financing, or withdrawal without notice. We include projections, opinions, assumptions or estimates for example only, and they may not represent current or future performance of the property. You and your tax and legal advisors should conduct your own investigation of the property and transaction.

LEE BLACK
Managing Director
O: 818.657.6539
leeblack321@outlook.com
CA #00897065

VERONICA SEYLER
Associate Director
C:818.456.6935
VeronicaSeyler@outlook.com
CA #02023158

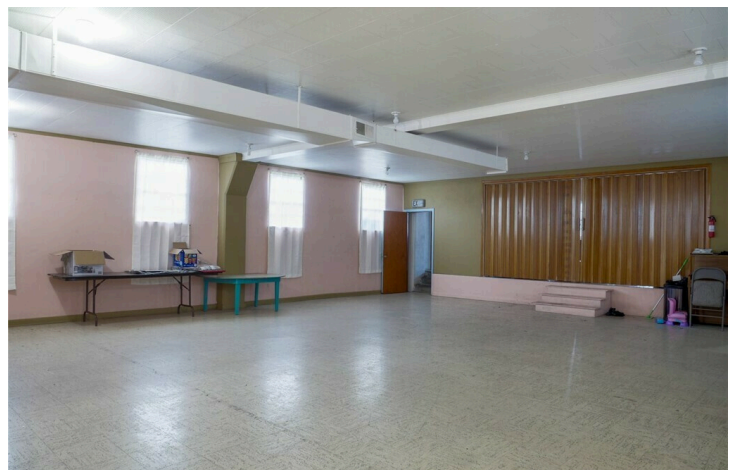
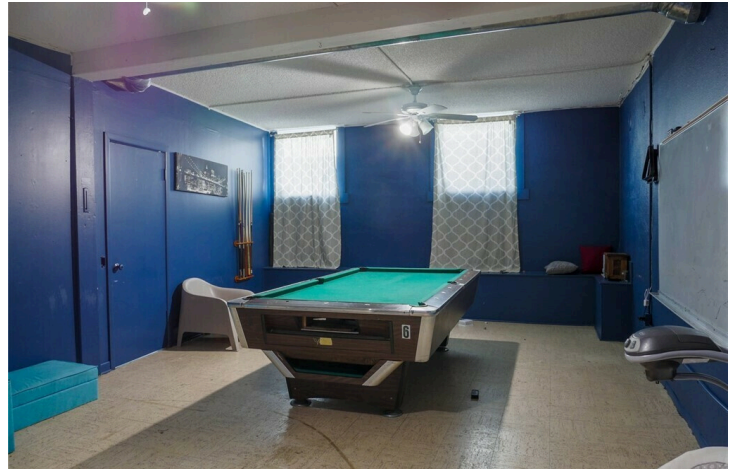
LOCAL MARKET CONTACT:
Anna Marie Dalbey
C:509-449-6881
AnnaMarieDalbey@kw.com

KW COMMERCIAL
23975 Park Sorrento
Calabasas, CA 91302

SPECIAL PURPOSE FOR SALE

1300 FOSTER AVENUE

Bridgeport, WA 98813



We obtained the information above from sources we believe to be reliable. However, we have not verified its accuracy and make no guarantee, warranty or representation about it. It is submitted subject to the possibility of errors, omissions, change of price, rental or other conditions, prior sale, lease or financing, or withdrawal without notice. We include projections, opinions, assumptions or estimates for example only, and they may not represent current or future performance of the property. You and your tax and legal advisors should conduct your own investigation of the property and transaction.

LEE BLACK
Managing Director
O: 818.657.6539
leeblack321@outlook.com
CA #00897065

VERONICA SEYLER
Associate Director
C:818.456.6935
VeronicaSeyler@outlook.com
CA #02023158

LOCAL MARKET CONTACT:
Anna Marie Dalbey
C:509-449-6881
AnnaMarieDalbey@kw.com

KW COMMERCIAL
23975 Park Sorrento
Calabasas, CA 91302

SPECIAL PURPOSE FOR SALE

1300 FOSTER AVENUE

Bridgeport, WA 98813



We obtained the information above from sources we believe to be reliable. However, we have not verified its accuracy and make no guarantee, warranty or representation about it. It is submitted subject to the possibility of errors, omissions, change of price, rental or other conditions, prior sale, lease or financing, or withdrawal without notice. We include projections, opinions, assumptions or estimates for example only, and they may not represent current or future performance of the property. You and your tax and legal advisors should conduct your own investigation of the property and transaction.

LEE BLACK
Managing Director
O: 818.657.6539
leeblack321@outlook.com
CA #00897065

VERONICA SEYLER
Associate Director
C: 818.456.6935
VeronicaSeyler@outlook.com
CA #02023158

LOCAL MARKET CONTACT:
Anna Marie Dalbey
C: 509-449-6881
AnnaMarieDalbey@kw.com

KW COMMERCIAL
23975 Park Sorrento
Calabasas, CA 91302