

KINDRED COMMERCIAL LOTS

101-221 8TH AVE S, KINDRED, ND

GOLDMARK[™]
COMMERCIAL REAL ESTATE INC

LOTS FOR SALE



EXCELLENT COMMERCIAL LOTS FOR SMALLER OFFICE OR SHOP DEVELOPMENT

COMMERCIAL LOT SIZES: 8,433 - 14,791 SF

PRICE: \$49,900 - \$89,000

Andrew Hanson | 701.239.5854

andrew.hanson@goldmark.com

Goldmark Commercial Real Estate

www.goldmarkcommercial.com

KINDRED COMMERCIAL LOTS

101-221 8TH AVE S, KINDRED, ND



LOT SIZES

8,433 to 14,791 SF
.19 to .34 acres
(Lots can be combined)

PRICE

\$49,900 to \$89,000
\$5.91 to \$6.02 PSF

ZONING

General Commercial

FLOOD PLAIN

No

PROPERTY DESCRIPTION:

Join Kindred's newest residential and commercial development, Meadow Trails! Located on the west end of Kindred's main street (Elm St), these attractive lots offer the perfect opportunity for businesses and individuals to build the office or shop of their dreams. With lots ranging from .19 to .34 acres, a wide variety of business types can find their home here. New city infrastructure should be completed by late fall 2025 for immediate development. Opportunities for commercial land like this in Kindred are very limited and lots will go fast.

LOT SIZE/PRICE

101 8th Ave S	14,791 SF	\$89,000
121 8th Ave S	8,433 SF	\$49,900
141 8th Ave S	9,454 SF	\$56,000
161 8th Ave S	9,921 SF	\$59,000
181 8th Ave S	9,983 SF	\$59,000
201 8th Ave S	9,984 SF	\$59,000
221 8th Ave S	9,984 SF	\$59,000

This information has been secured from sources we believe to be reliable, but we make no representation or warranties, expressed or implied, as to the accuracy of the information. Interested parties should conduct their own independent investigations and rely only on those results.

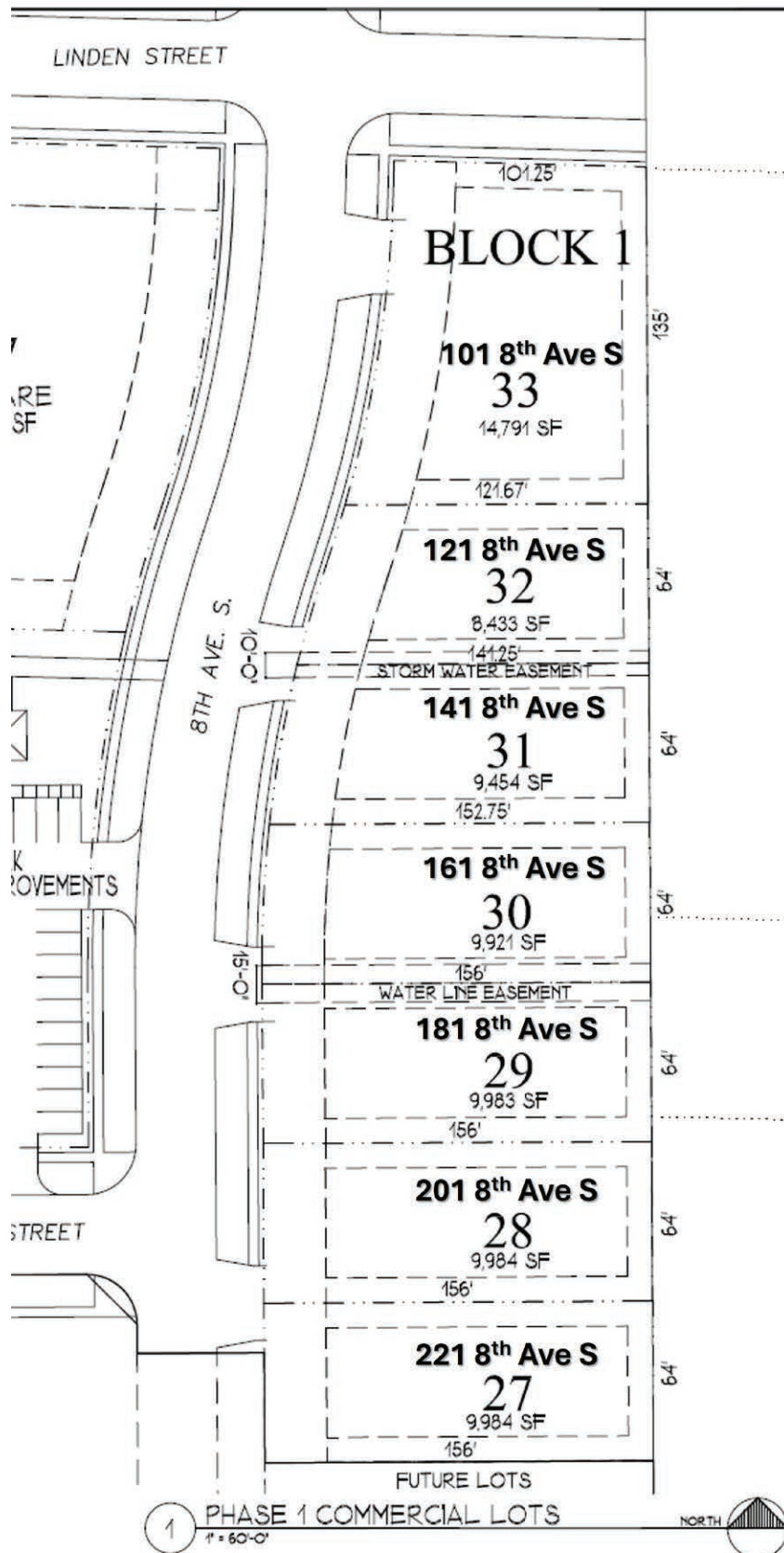


KINDRED COMMERCIAL LOTS

101-221 8TH AVE S, KINDRED, ND

GOLDMARK[™]
COMMERCIAL REAL ESTATE INC

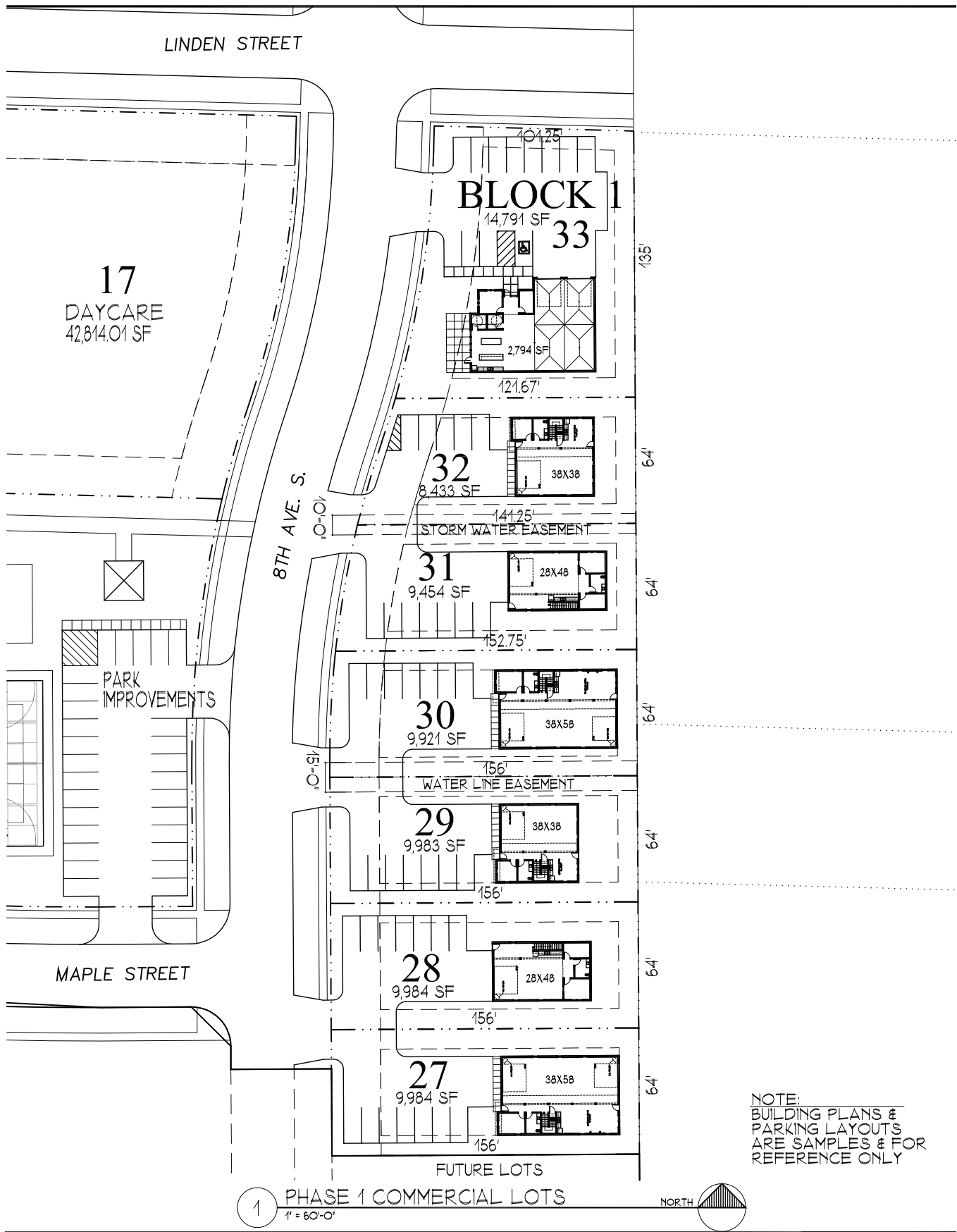
LOT MAP



Lot 101	14,791 SF	\$89,000
Lot 121	8,433 SF	\$49,900
Lot 141	9,454 SF	\$56,000
Lot 161	9,921 SF	\$59,000
Lot 181	9,983 SF	\$59,000
Lot 201	9,984 SF	\$59,000
Lot 221	9,984 SF	\$59,000

KINDRED COMMERCIAL LOTS

101-221 8TH AVE S, KINDRED, ND

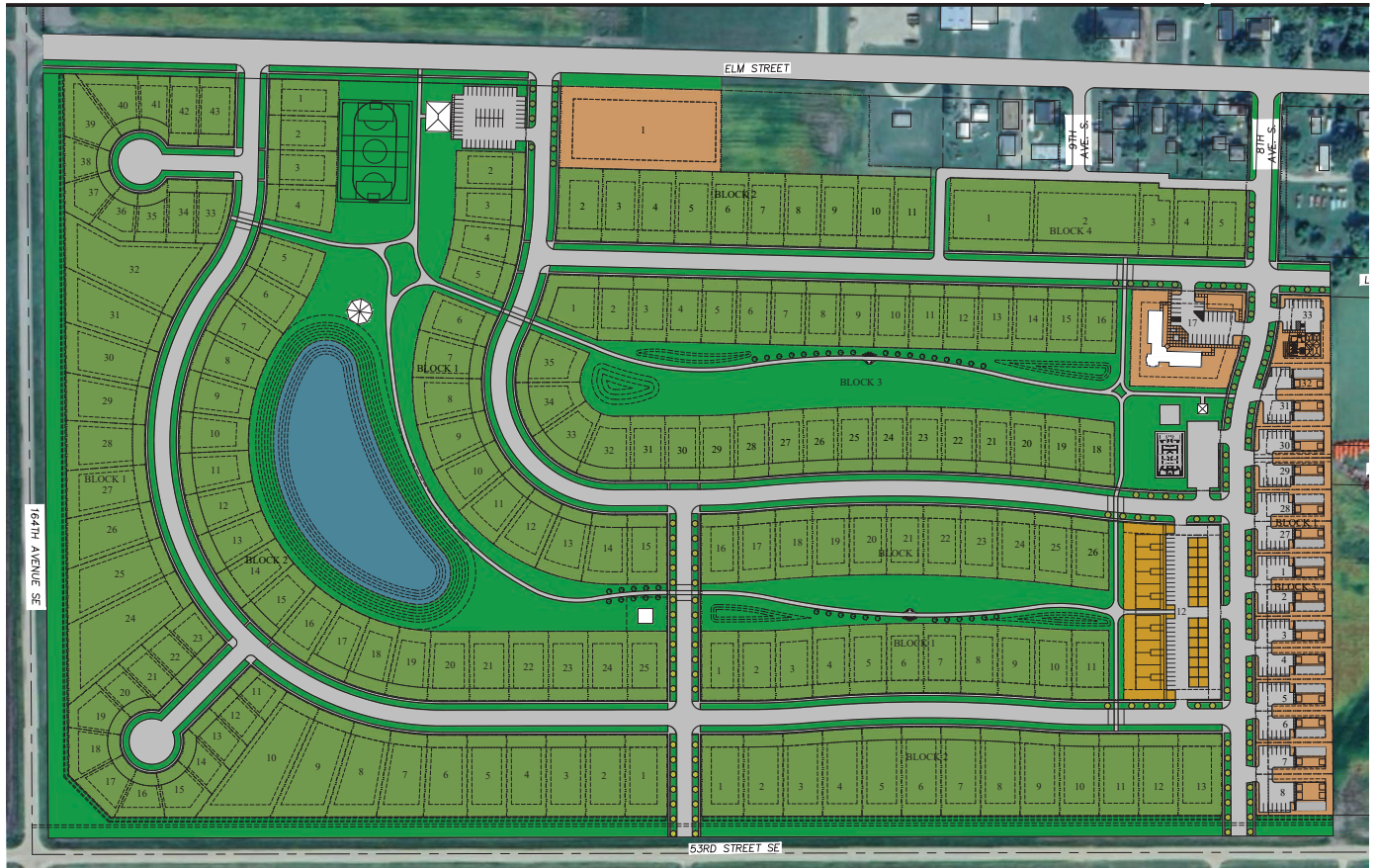


KINDRED COMMERCIAL LOTS

101-221 8TH AVE S, KINDRED, ND

GOLDMARK[™]
COMMERCIAL REAL ESTATE INC

MEADOW TRAILS: UPON COMPLETION



MEADOW TRAILS: UPON COMPLETION