



WAREHOUSE/OFFICE SPACE

FOR SALE

1530 MOUNTAIN GAP ROAD | RICHBURG, SC

Industrial site right off I-77.

JIM WETZEL
c 704 491 1722
jwetzel@mecacommercial.com





PROPERTY INFORMATION

SF*

± 12,500 SF

- 10,000+ SF Outdoor covered storage
- 3,250 SF Conditioned office/showroom area

ACREAGE*

± 9.8 Acres

ZONING

ID-2 in Chester County

FEATURES

- There is ± 1,000 SF of conditioned office with restrooms
- ± 4,000 covered bay/carport behind the main building that can be used as covered storage or parking
- Additional 500 SF building lot that can be used for storage or an extra office
- Acreage can be used as laydown yard or space
- to expand the building footprint extensively
- 4 total 11'x13' drive-in doors
- 15'-16' clear height throughout
- Warehouse is partially conditioned
- Current tenant in place through December 1, 2026.

LIST PRICE

\$1,395,000

JIM WETZEL

c 704 491 1722

jwetz@mecacommercial.com

MECA Commercial Real Estate

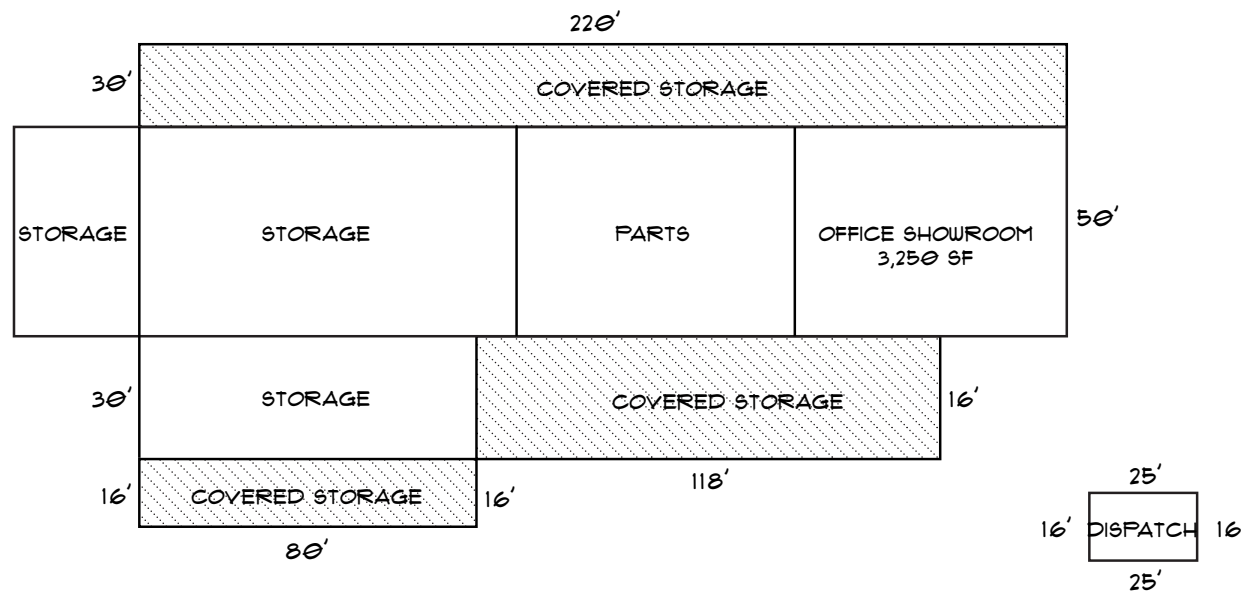
2216 Monument Street

Charlotte, NC 28208

704 971 2000



MECA
COMMERCIAL REAL ESTATE



JIM WETZEL

c 704 491 1722

jwetzels@mecacommercial.com

MECA Commercial Real Estate
2216 Monument Street
Charlotte, NC 28208 | 704 971 2000



MECA
COMMERCIAL REAL ESTATE

mecacommercial.com

© 2025 Metro Realty, LLC. All rights reserved. Metro Realty, LLC fully supports the principles of the Fair Housing Act and the Equal Opportunity Act.

*The land acreage and/or building square footage was obtained from the County's Geographical Information System or other electronic resources. For exact square footage and/or acreage, we recommend that prior to purchase, a prospective Buyer/Tenant obtain a boundary survey or have the building measured professionally.



\$423M

INVESTED BY E. &
J. GALLO WINERY,
CREATING 496 JOBS

2024

NAMED CO-SMALL
MARKET OF THE YEAR BY
SOUTHERN BUSINESS &
DEVELOPMENT MAGAZINE

2

MAJOR METROPOLITAN
MARKETS, COLUMBIA,
SC & CHARLOTTE, NC
CLOSEBY, OFFERING
ADVANTAGES FROM EACH

#1

IN MANUFACTURING,
BOASTING 70%
GROWTH FROM
2010-2020

\$27.4M

AWARDED FOR FEDERAL
RAILWAY ADMINISTRATION
GRANT

CHESTER COUNTY, SC

Offering an idyllic lifestyle bursting with opportunity, Chester County spans an area of 586 square miles, including six square miles of water. Their population of nearly 33,000 people understand the value of community preservation and hard work, fueling future growth.

Executives visiting this region consistently commend the pro-business attitude and commitment to making their corporate move an easy, profitable transition. The unique blend of small-town hospitality with close proximity to major metropolitan amenities is why these companies ultimately “Choose Chester.”

Boasting one of the most affordable U.S. housing markets, throughout Chester County you'll find rural charm, a low cost of living, and a strong sense of community. The county's charm has even lured Hollywood producers who selected our county for multiple films including The Patriot, Gospel Hill and the mini-series Chiefs

