

*Silo Square*

**6233 Getwell Rd. N  
Southaven, MS 38672**

# FOR SALE OR LEASE

## New 9,100 SF Building

- RETAIL
- RESTAURANT
- ENTERTAINMENT SPACE

### *Listing Brokers:*



**FRANK DYER, III, CCIM, RPA**  
Senior Vice President of Brokerage  
(C) 901.277.8183  
[frank@gillprop.com](mailto:frank@gillprop.com)



**BARRY MAYNARD**  
Senior Vice President of Brokerage  
(C) 901.230.4265  
[barry@gillprop.com](mailto:barry@gillprop.com)



**LEXIE HILL GRISANTI**  
(C) 901.282.9198  
[lexie@lifestylehomes.com](mailto:lexie@lifestylehomes.com)

**GILL**  
PROPERTIES

6815 POPLAR AVE  
GERMANTOWN, TN 38138  
901.758.1100

*Cooperating Broker:*



AUSTIN REALTY GROUP, INC.

# Building Exterior





# Property Highlights | Interior



- NEW | SHELL SPACE located in the Highly Desirable Silo Square in Southaven, MS
- 9,100 SF Freestanding Bldg. on 1.65 +/- Acres
- Two Floors
  - ✓ Ground Floor: 7,000 SF
  - ✓ Mezzanine Level: 2,100 SF
  - ✓ Patio: 700 SF
- Abundance of Windows for Natural Light
- Dining al Fresco under a Large Covered Patio
- Ample Parking Spaces (40+)



**TENANT IMPROVEMENT ALLOWANCE OFFERED**



# Property Layout & Demographics

**9,100 SF Building | 1.65 AC**

- Ground Level | 7,000+/- SF
- Mezzanine Level | 2,000+/- SF
- Patio | 900+/- SF

## POPULATION

1 MILE	3,006+
3 MILE	33,000+
5 MILE	85,380+

## HOUSEHOLDS

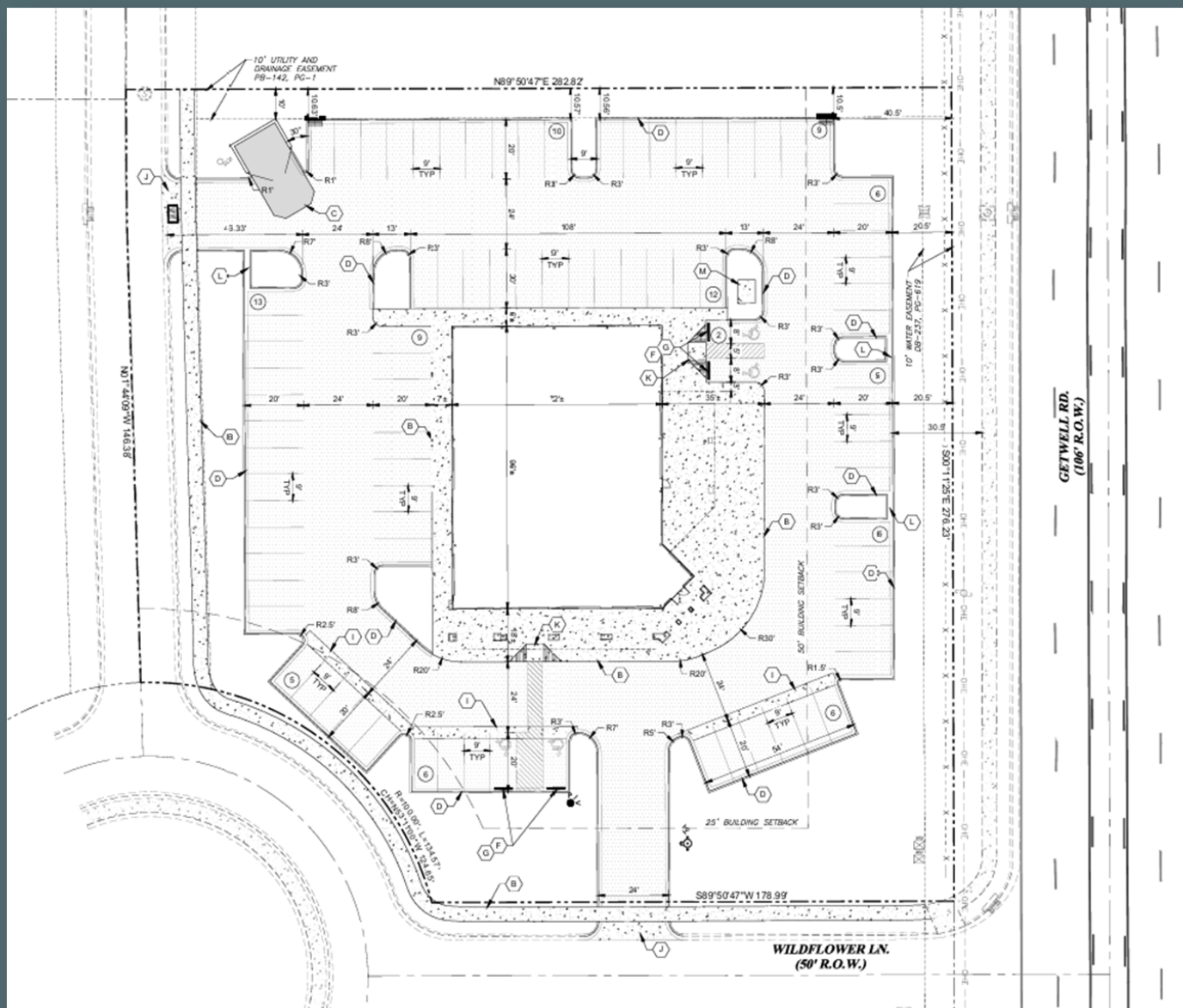
1 MILE	1,020
3 MILE	12,000+
5 MILE	30,830+

## AVG HH INCOME

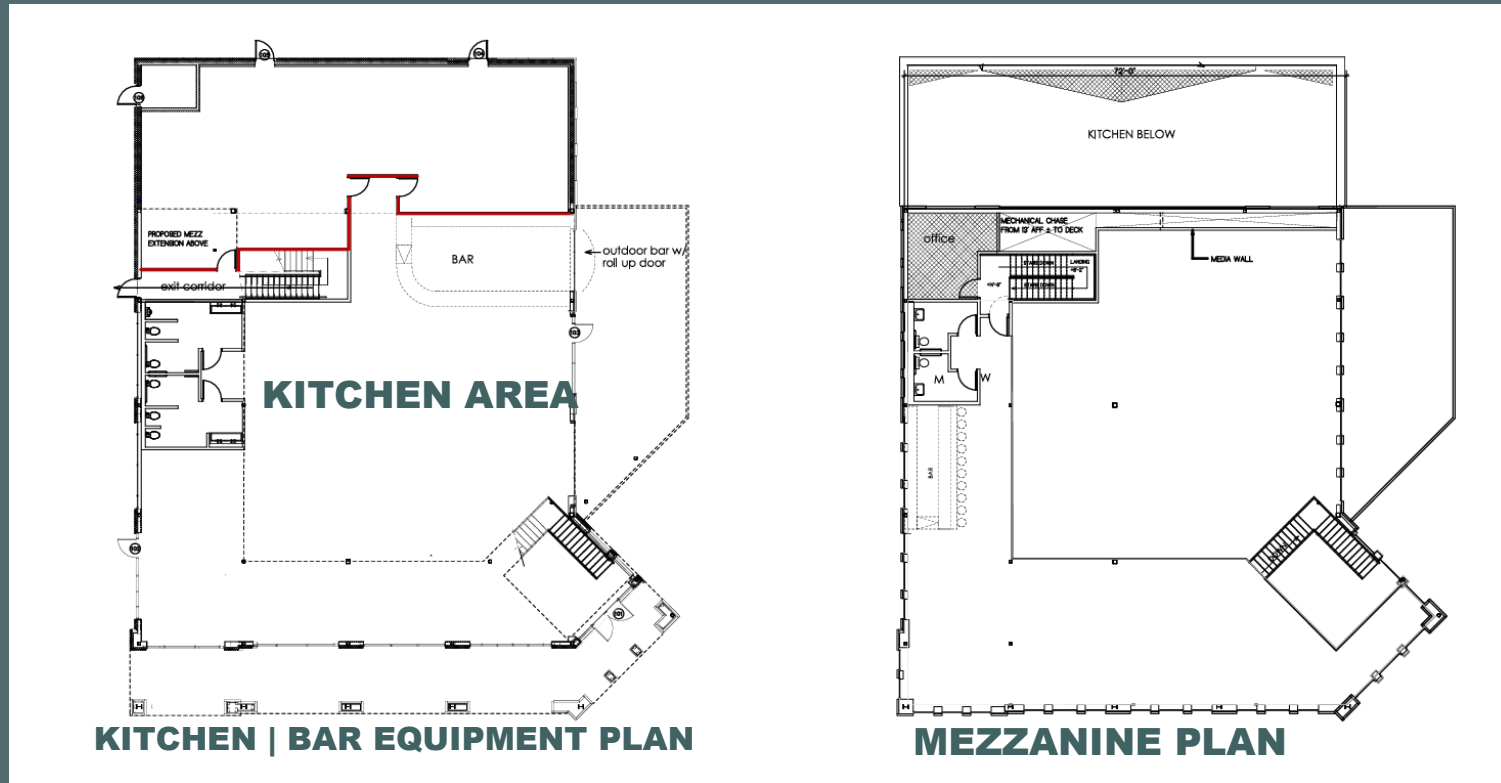
1 MILE	\$111,900
3 MILE	\$ 97,576
5 MILE	\$ 83,371

## DAILY TRAFFIC

GETWELL RD	24,000+
GOODMAN RD	36,000+



# 6233 GETWELL RD. N | SOUTHAVEN, MS



## Your Place Coming Soon?

### Listing Brokers:

**FRANK DYER III, CCIM, RPA**  
SR Vice President of Brokerage  
(C) 901.277.8183  
[frank@gillprop.com](mailto:frank@gillprop.com)

**BARRY MAYNARD**  
SR Vice President of Brokerage  
(C) 901.230.4265  
[barry@gillprop.com](mailto:barry@gillprop.com)

### Cooperating Broker:

**LEXIE HILL GRISANTI**  
(C) 901.282.9198  
[lexie@lifestylehomes.com](mailto:lexie@lifestylehomes.com)



#LiveWorkPlay

# S I L O S Q U A R E®

#SiloSquare

*known as the leisure & recreation district*  
*“mission & inspiration”*



Town squares are the heart and soul of many towns in America and even more so here in the Southeast. Even in much larger cities like Memphis and New Orleans, there are many downtown streets that were built in an era when architectural character and charm were at its best.

Did you know Silo Square is a Leisure and Recreation District? What does that mean? While walking around the square, you can bring drinks from store to store. On the waiting list for Staks Pancake Kitchen? Grab a Mimosa to-go and walk next door to Ultimate Gifts to browse while you wait!

Attending a concert across the street at BankPlus Amphitheater? Feel free to grab a drink at Tekila and walk across the pedestrian bridge to enjoy the rest of the concert.

<https://www.silosquarems.com/>





# Location Highlights

- 1.65 AC Corner Parcel at Getwell Rd and Wildflower Lane
- Bustling Location in Silo Station, Southaven, MS
- Amid a Mix of Local and National Retailers, Hotels, Restaurants, and a Robust Office Population
- Strategically located across from the BankPlus Amphitheater (SOLD OUT Headliner Concerts) and Snowden Grove Baseball Complex (National Tournaments scheduled year-round)



## NEIGHBORING TENANTS:





# The Area | 5 M Radius

## THE ANNUAL EVENTS



MUSIC



FESTIVALS



HOLIDAYS



TOURNAMENTS



HEADLINERS

## THE AWARDS



2019 BEST REAL ESTATE DEAL  
MIXED-USE CATEGORY



VOTED MISSISSIPPI'S  
*Best Downtown Shopping*



VOTED MISSISSIPPI'S  
*Best Commercial Development*  
2022



THE BEST IN  
MISSISSIPPI  
BUILDING AND  
REMODELING  
AWARDS

*Business of the Year*  
2024



COMMUNITY  
FOUNDATION  
of Northwest Mississippi

## COMING SOON



GROCERY STORE 2025

## THE SPORT'S COMPLEXES



SNOWDEN GROVE TENNIS COMPLEX



SNOWDEN GROVE BASEBALL COMPLEX



SNOWDEN GROVE SOCCOR COMPLEX



# The Area | 5 M Radius

## THE LIVING

SILO LOFTS



TOWN SQUARE COTTAGES



THE PRESERVE



THE PROVOST APARTMENTS



THE SILO SQUARE NIGHTLIFE

## THE DESOTO COUNTY SCHOOLS



DESOTO CENTRAL ELEMENTARY SCHOOL



DESOTO CENTRAL MIDDLE SCHOOL



DESOTO CENTRAL HIGH SCHOOL



# Silo Square is the Destination



**SILO BELL TOWER**



**PEDESTRIAN BRIDGE CONNECTING  
SILO SQUARE TO SNOWDEN GROVE**



**JERRY LEE LEWIS STATUE**



**DIRECTLY ACROSS FROM THE  
BANKPLUS AMPHITHEATER  
IN SNOWDEN GROVE**

**CALL OR TEXT US:**  
**Frank Dyer, III (901) 277-8183**  
**Barry Maynard (901) 230-4265**  
**Lexie Hill Grisanti (901) 282-9198**