

FOR LEASE

- **Unit 209**
2,279+/- S.F.
- **\$29.75 per S.F. plus electric and cleaning**
- **Large comfortable waiting & reception area**
- **Ample FREE parking**
- **6 Exam rooms, each with a sink and screen**
- **2 Doctor's offices**
- **Breakroom, bathroom & lab room**

***Class A
Ready-to-Occupy
Medical Space!!***

“CRYSTAL ROCK PLAZA” **19785 Crystal Rock Drive** **Germantown, MD 20874**



Join a number of reputable medical professionals in this Class A, 4-star office condo building.

Call for more information or to see the space:

301.961.9696

Rick Kelly

Ext. 210

rkelly@amrcommercial.com

Zach Dubin

Ext. 213

zdubin@amrcommercial.com

Although all information furnished is from sources we deem reliable, such information has not been verified and no express representation is made, nor is any to be implied, as to the accuracy thereof, and it is submitted subject to errors, omissions, changes of price/rental or other conditions prior to sale or lease, and subject to withdrawal without notice.



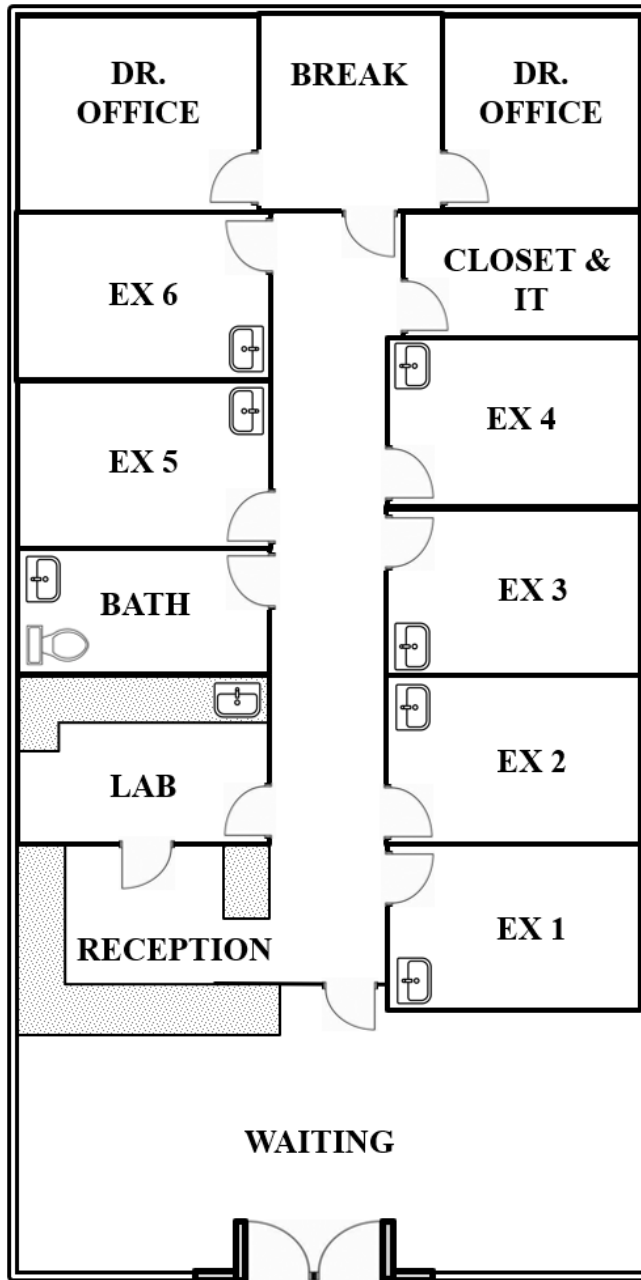
ALEXANDER, MONTROSE, RITTENBERG
Commercial Real Estate Brokerage
Est. 1994

Celebrating
30
Years
1994-2024

A Member of **CORE**
PROPERTIES

4849 Rugby Avenue ♦ Suite 200 ♦ Bethesda, Maryland 20814 ♦ 301.961.9696 ♦ Fax 301.656.7551 ♦ www.amrcommercial.com

Unit 209
2,279+/- S.F.



*Double Glass Door Entry with
Glass Panels on Either Side*

NOT TO SCALE | MEASUREMENTS APPROXIMATE

Although all information furnished is from sources we deem reliable, such information has not been verified and no express representation is made, nor is any to be implied, as to the accuracy thereof, and it is submitted subject to errors, omissions, changes of price/rental or other conditions prior to sale or lease, and subject to withdrawal without notice.

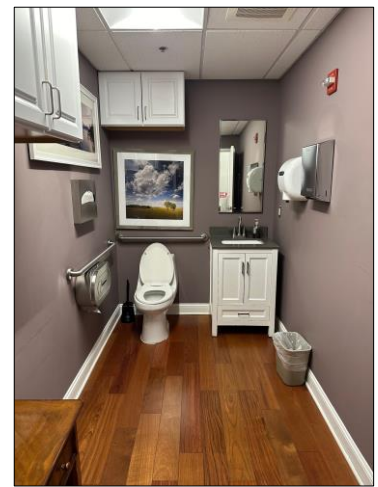
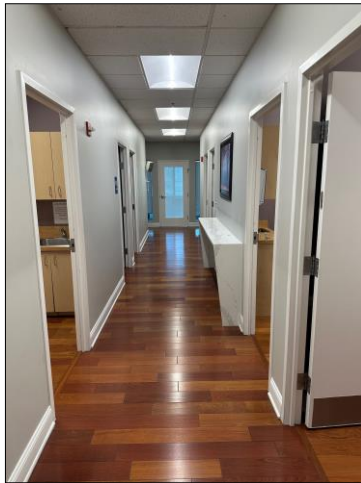
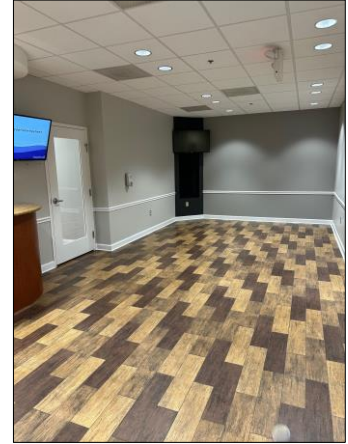


ALEXANDER, MONTROSE, RITTENBERG
Commercial Real Estate Brokerage
Est. 1994



A Member of **CORE**
REALTY

Unit 209
2,279+/- S.F.



Although all information furnished is from sources we deem reliable, such information has not been verified and no express representation is made, nor is any to be implied, as to the accuracy thereof, and it is submitted subject to errors, omissions, changes of price/rental or other conditions prior to sale or lease, and subject to withdrawal without notice.

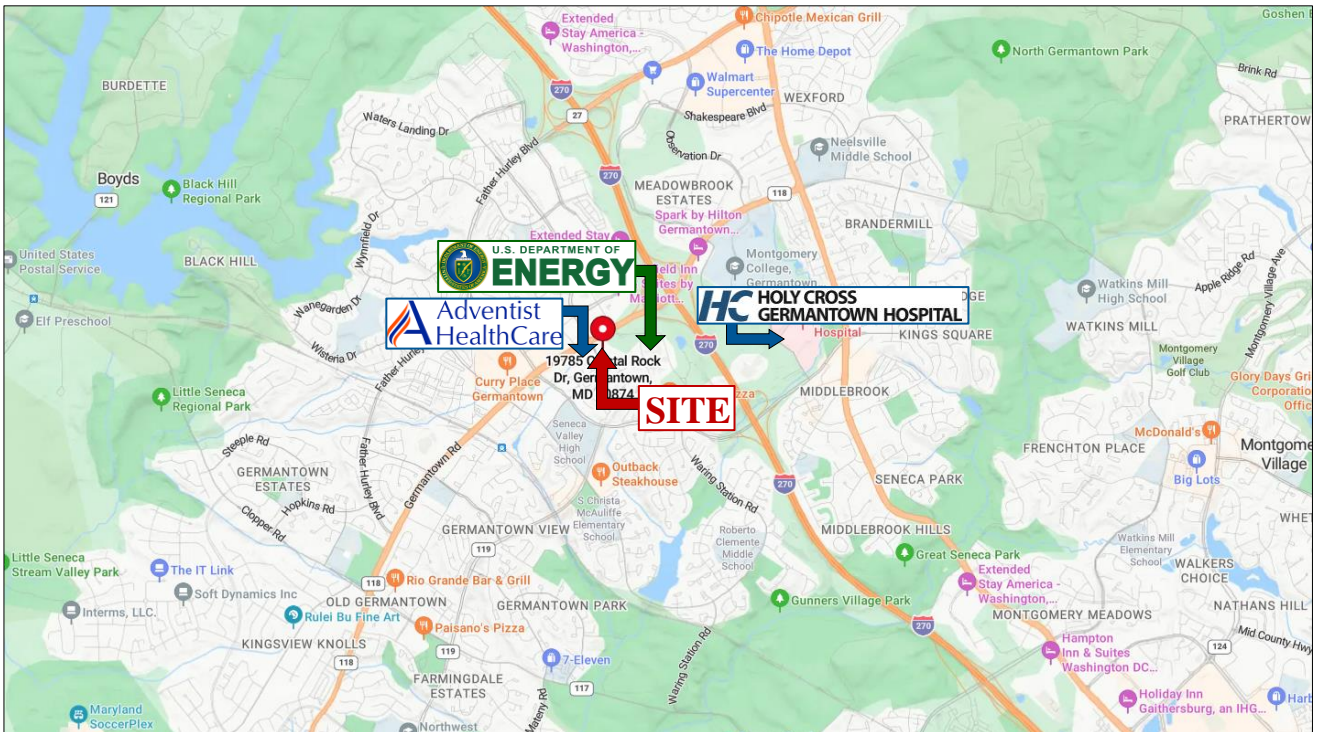


ALEXANDER, MONTROSE, RITTENBERG
Commercial Real Estate Brokerage
Est. 1994

Celebrating
30 Years
1994-2024

A Member of **CORE**
NETWORK

Unit 209
2,279+/- S.F.



Although all information furnished is from sources we deem reliable, such information has not been verified and no express representation is made, nor is any to be implied, as to the accuracy thereof, and it is submitted subject to errors, omissions, changes of price/rental or other conditions prior to sale or lease, and subject to withdrawal without notice.



ALEXANDER, MONTROSE, RITTENBERG
Commercial Real Estate Brokerage
Est. 1994



A Member of **CORE**
COMMERCIAL REAL ESTATE