

OFFERING MEMORANDUM

# 744 FAWCETT

*Owner/User Opportunity*

744 FAWCETT AVE, TACOMA, WA 98402



KIDDER.COM

**km** Kidder  
Mathews



# TABLE OF CONTENTS

01

EXECUTIVE  
SUMMARY

02

PROPERTY  
OVERVIEW

## *Exclusively Listed by*

DREW FRAME, SIOR  
SVP, Shareholder  
253.948.7032  
drew.frame@kidder.com

WILL FRAME  
EVP, Shareholder  
253.948.6895  
will.frame@kidder.com

RYAN KERSHAW  
Investment Specialist  
206.949.1334  
ryan.kershaw@kidder.com

[KMTEAMFRAME.COM](http://KMTEAMFRAME.COM)

[KIDDER.COM](http://KIDDER.COM)

The information contained in the following Marketing Brochure is proprietary and strictly confidential. It is intended to be reviewed only by the party receiving it from Kidder Mathews and should not be made available to any other person or entity without the written consent of Kidder Mathews.

This Marketing Brochure has been prepared to provide summary, unverified information to prospective purchasers, and to establish only a preliminary level of interest in the subject property. The information contained herein is not a substitute for a thorough due diligence investigation. Kidder Mathews has not made any investigation, and makes no warranty or representation, with respect to the income or expenses for the subject property, the future projected financial performance of the property, the size and square footage of the property and improvements, the presence or absence of contaminating substances, PCB's or asbestos, the compliance with State and Federal regulations, the physical condition of the improvements thereon, or the financial condition or business prospects of any tenant, or any tenant's plans or intentions to continue its occupancy of the subject property. The information contained in this Marketing Brochure has been obtained from sources we believe to be reliable; however, Kidder Mathews has not verified, and will not verify, any of the information contained herein, nor has Kidder Mathews conducted any investigation regarding these matters and makes no warranty or representation whatsoever regarding the accuracy or completeness of the information provided. All potential buyers must take appropriate measures to verify all of the information set forth herein.

This information has been secured from sources we believe to be reliable. We make no representations or warranties, expressed or implied, as to the accuracy of the information. References to square footage or age are approximate. Recipient of this report must verify the information and bears all risk for any inaccuracies.

An abstract geometric line drawing in a light gold color, consisting of numerous intersecting lines that form a complex, multi-faceted structure resembling a stylized building or a series of overlapping planes. It is positioned on the left side of the page, extending from the bottom edge upwards and towards the center.

# EXECUTIVE SUMMARY

---

*Section 01*

# OFFICE/RETAIL BUILDING WITH GATED PARKING

Kidder Mathews is proud to offer 744 Fawcett - a highly adaptable mixed-use property with diverse potential. Situated at the prominent corner of 7th and Fawcett in Downtown Tacoma, this 3,528-square-foot building presents a rare ownership opportunity in a prime urban location. The property features 11 secure, gated parking stalls on-site, along with abundant street parking, ensuring easy access for both clients and employees.

## PROPERTY OVERVIEW

ADDRESS	744 Fawcett Ave, Tacoma, WA 98402
EST. BUILDING SIZE	3,528 SF (with an additional 800 SF Rooftop Deck)
LAND SIZE	0.21 AC (9,000 SF)
ZONE	DCC
BUILT/RENOVATED	1958/1988/2021
PARCEL NO.	2007100020
ON SITE PARKING & GATES STALLS	11 stalls
STORIES	2

*\$1,200,000*  
SALE PRICE







## FIRST FLOOR CLASS ROOM





## ROOFTOP PATIO



## OPPORTUNITY HIGHLIGHTS

### LOCATION & ACCESS

744 Fawcett Ave is located in the heart of downtown Tacoma, offering excellent proximity to the city's business district, courthouses, and cultural attractions. The property is easily accessible via I-705 and I-5, with convenient connections to Pierce Transit bus lines and the Tacoma Link light rail. On-site and nearby parking options, along with pedestrian-friendly streets, make it a highly accessible location for both commuters and visitors.

### PARKING OPPORTUNITY

The building features an 11-stall surface parking lot that is fully enclosed by a secure fence, providing added safety, controlled access to the premises and convenient, on-site parking for tenants and visitors alike. Additionally, there is a large permit parking surface lot behind the building on Court E Street along with an abundance of free and metered street parking available in the surrounding area, particularly along Fawcett Avenue and Court E Street.

### RECENT IMPROVEMENTS

New roof in 2021

New 4 ton HVAC unit in 2021

Parking lot fence installed in 2023

Outdoor rooftop deck installed in 2023

Repaved parking lot in 2022





## EXECUTIVE SUMMARY







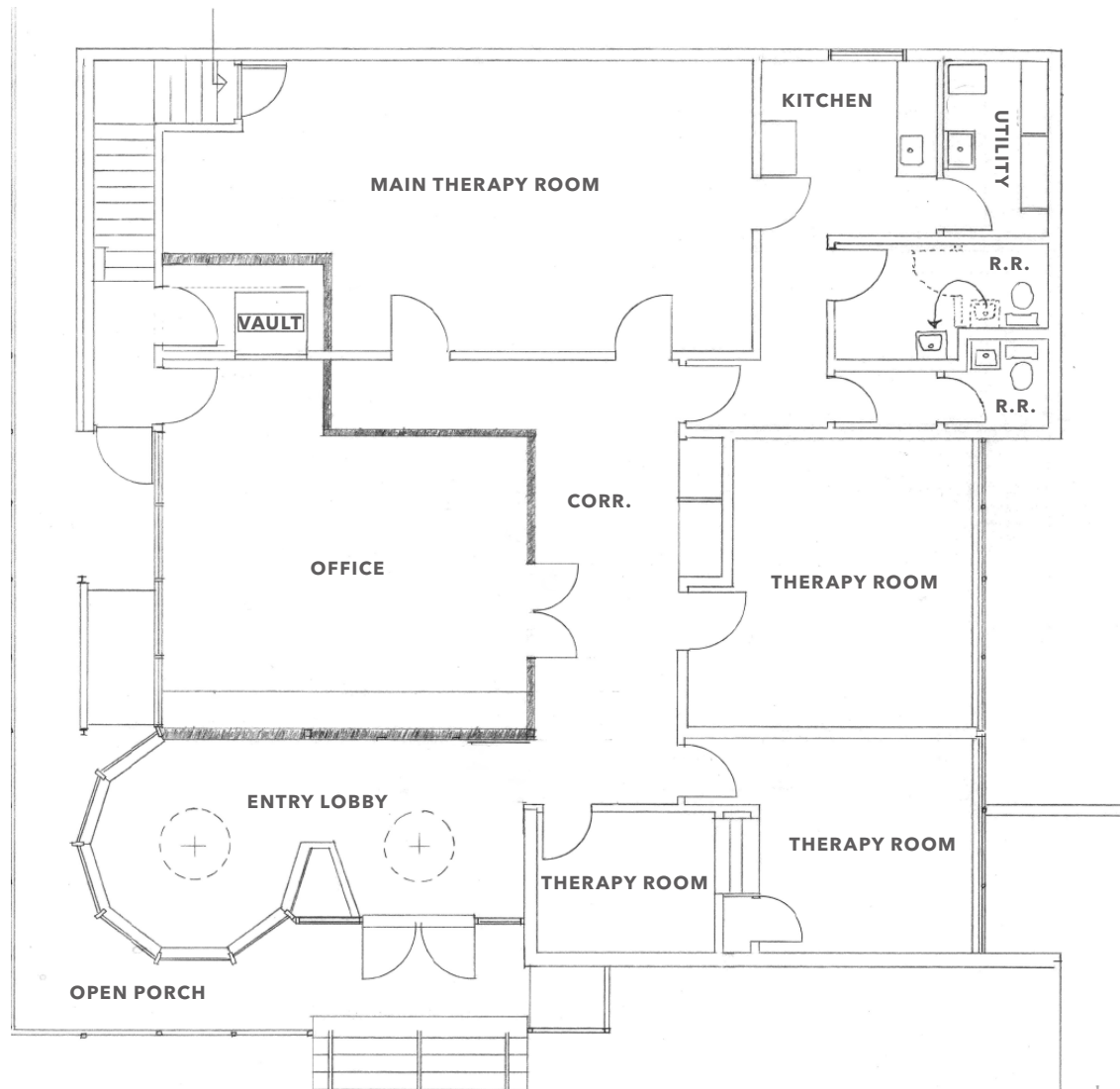
# PROPERTY OVERVIEW

---

*Section 02*

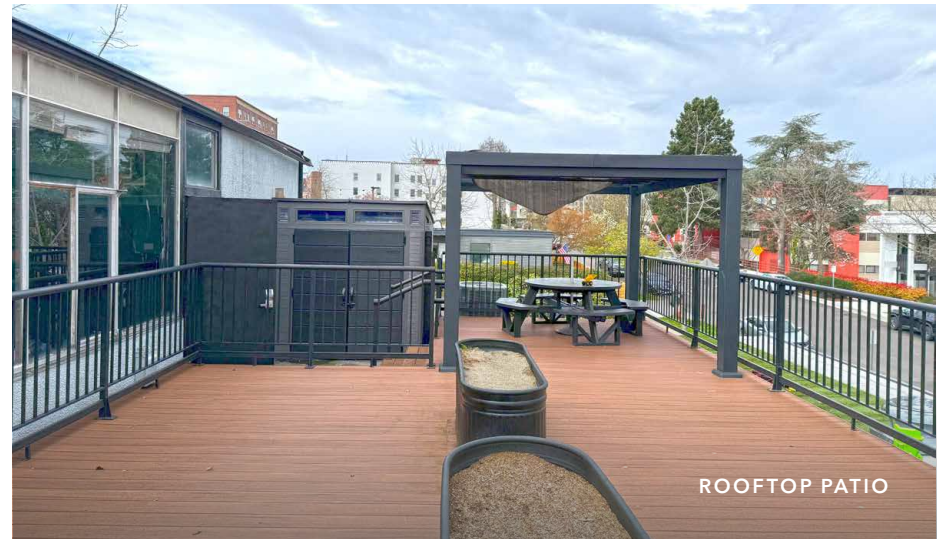


## MAIN 1ST FLOOR PLAN



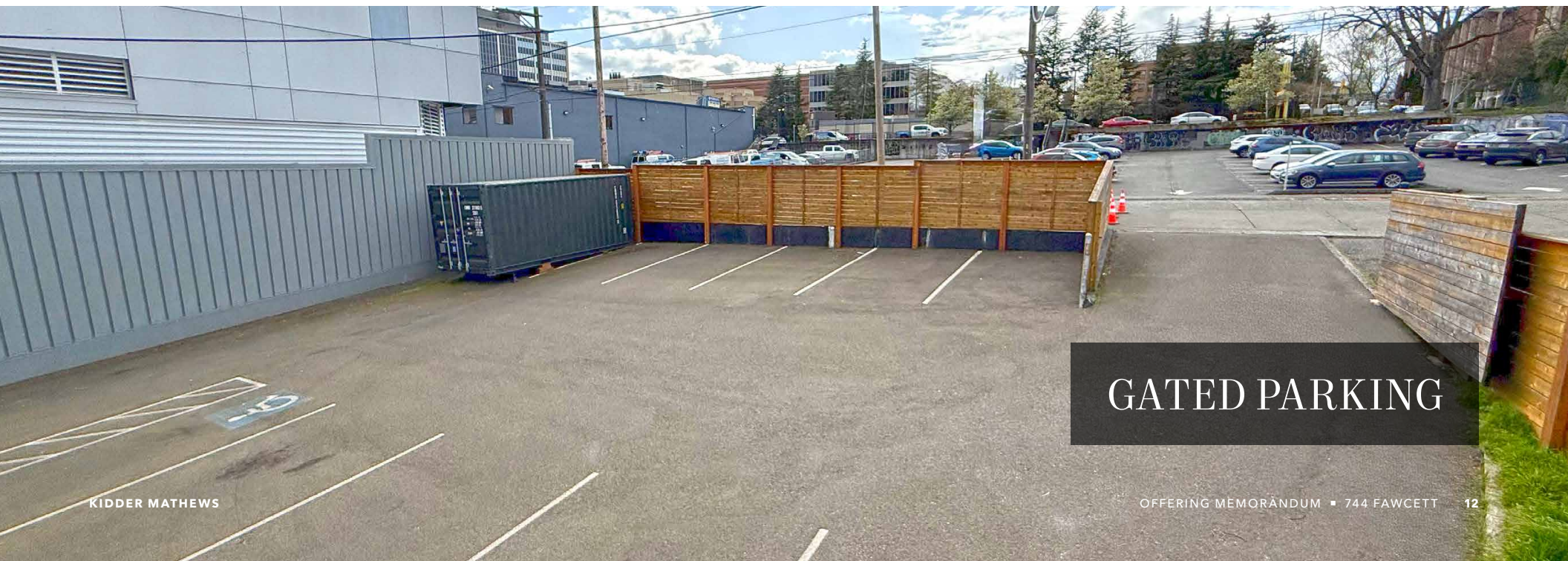


## PROPERTY OVERVIEW





## PROPERTY OVERVIEW

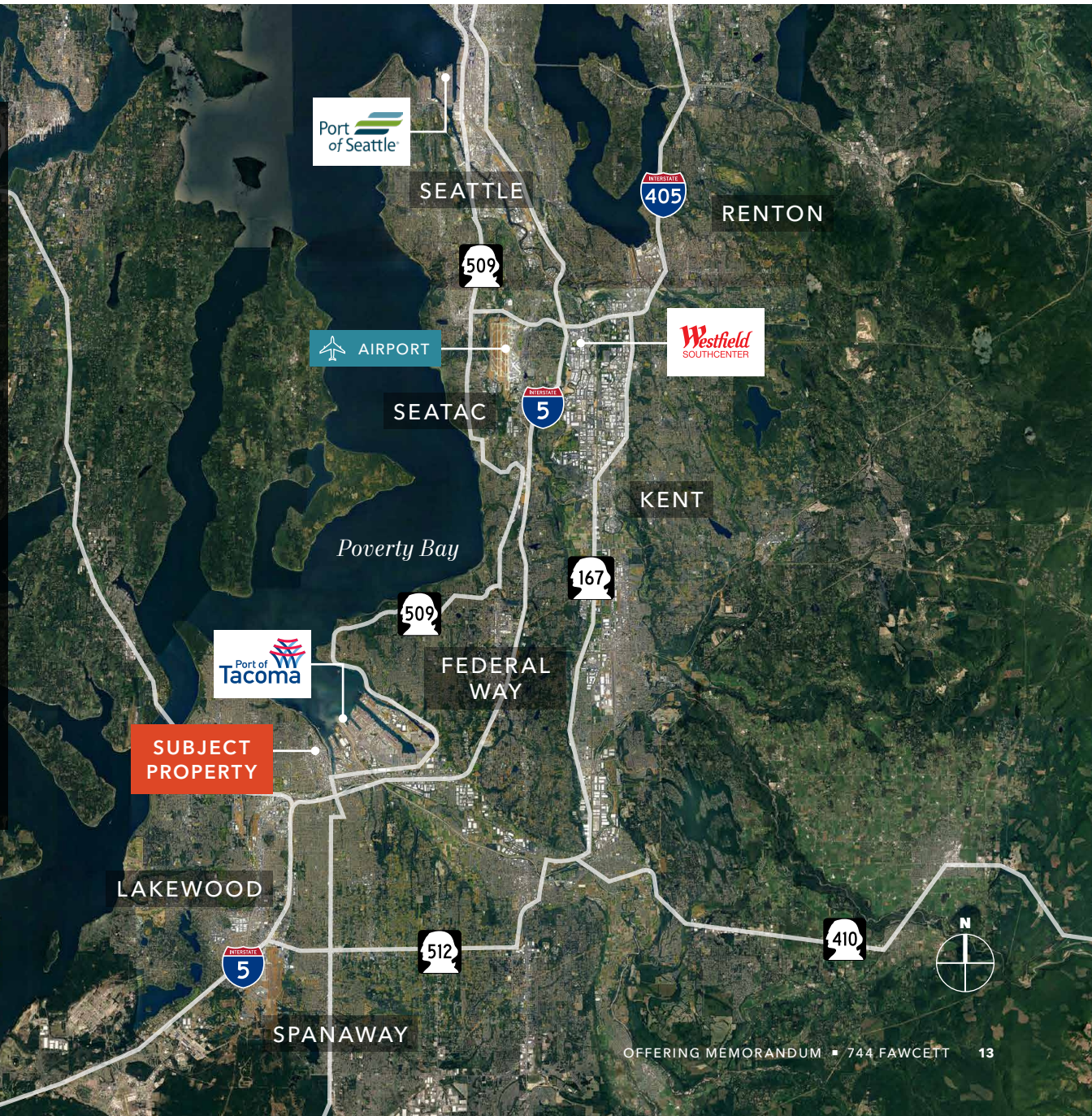


GATED PARKING



## DRIVE TIME

PORT OF SEATTLE	27 MINUTES
BELLEVUE	40 MINUTES
SEATTLE	40 MINUTES
RENTON	30 MINUTES
SOUTHCENTER MALL	24 MINUTES
SEA-TAC AIRPORT	24 MINUTES
KENT	26 MINUTES
FEDERAL WAY	20 MINUTES
GIG HARBOR	15 MINUTES
PORT OF TACOMA	10 MINUTES







*Exclusively listed by*

DREW FRAME, SIOR  
SVP, Shareholder  
253.948.7032  
drew.frame@kidder.com

WILL FRAME  
EVP, Shareholder  
253.948.6895  
will.frame@kidder.com

RYAN KERSHAW  
Investment Specialist  
206.949.1334  
ryan.kershaw@kidder.com

KMTEAMFRAME.COM  
KIDDER.COM

