

# FOR LEASE

## 7960 GRAND RIVER AVE



**7960 GRAND RIVER AVE**  
**BRIGHTON, MI 48114**

### PROPERTY HIGHLIGHTS:

- Premier medical and office building located on Grand River Ave.
- Office and medical suite available up to 1,454 SF
- Wooded views
- Grand River Ave. monument signage available
- Nearby abundant retail and restaurants
- Approximately 2 miles from downtown Brighton
- Ample parking
- I-96 access minutes away
- Office rental rates starting at \$16.50/SF

The information provided herein along with any attachment(s) was obtained from sources believed to be reliable, however, Friedman Real Estate makes no guarantees, warranties, or representations as to the completeness or accuracy of such information and legal counsel is advised. All information provided is subject to verification and no liability for reliance on such information or errors or omissions is assumed. The presentation of this property is submitted subject to errors, omissions, change of price or conditions, prior sale or lease, or withdrawal without notice. Copyright © 2025 Friedman Real Estate. All rights reserved.

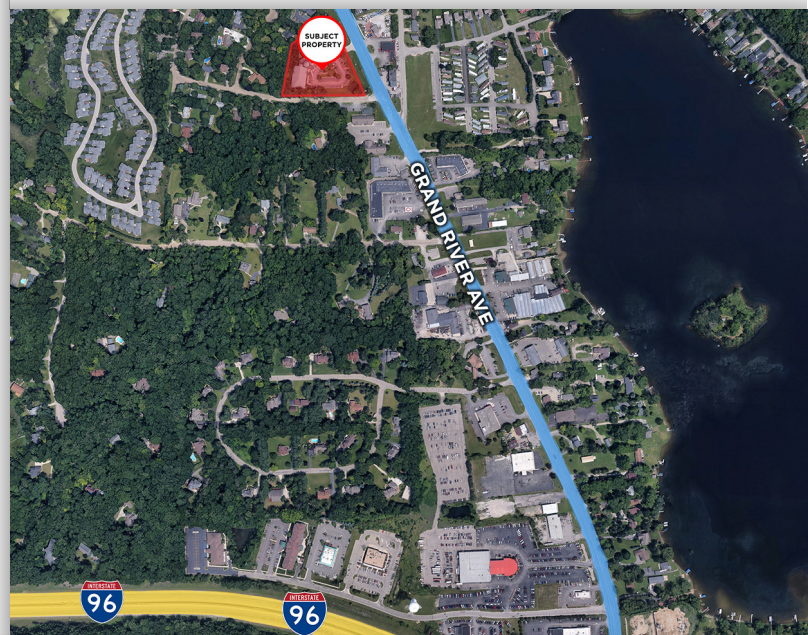
FOR MORE INFORMATION PLEASE CONTACT:



**TODD HAWLEY**  
**todd.hawley@freg.com**

**248.324.2000**

**eCODE 274**





## 7960 GRAND RIVER AVE

# PROPERTY **AVAILABILITY**

AVAILABLE SUITES			
SPACE	SPACE USE	LEASE RATE	SIZE (SF)
Suite 290	Office   Medical	\$16.50 - 21.00 SF/yr	1,350 SF



7960 GRAND RIVER AVE  
PROPERTY **PHOTOS**

