

MEDICAL/PROFESSIONAL OFFICE CONDOS FOR LEASE MEDICAL CONDOS FOR SALE OR LEASE

9205 & 9209 W. State St., Boise, ID 83714



ECONOMIC DATA

9205 1ST FLOOR: \$16.90 SF/yr (NNN)

9205 2ND FLOOR: \$1,750 Per/mo (FS)

9209 BLDG: \$15.95 SF/yr (NNN)

BUILDING DATA

YEAR BUILT: 2008

ZONING: C-2

LISTING DATA

9205 BLDG. SF: 1,602 SF - 3,204 SF

9209 BLDG SF: 1,446 SF

PROPERTY OVERVIEW

Lee & Associates is pleased to present the opportunity to lease these medical condos in the Northwest Boise/Eagle submarket. Two well-maintained medical condos, ideally situated on a bustling road, are now available for lease. Offering excellent visibility and flexible usage options beyond medical practices. 9209 is built-out with high end ortho finishes. 9205 has general dentistry on the ground floor and general office space on the second floor. All three units are available together or separate.

PROPERTY HIGHLIGHTS

- Excellent visibility with 41,501 VPD
- Located between Downtown Boise & Eagle
- Great co-tenancy with medical related users
- Excellent ample on-site parking
- Multiple units available

Matt Mahoney, SIOR | Managing Principal
mattm@leeidaho.com
C 208.340.9780

Austin Hopkins | Principal
austinh@leeidaho.com
C 208.995.5944

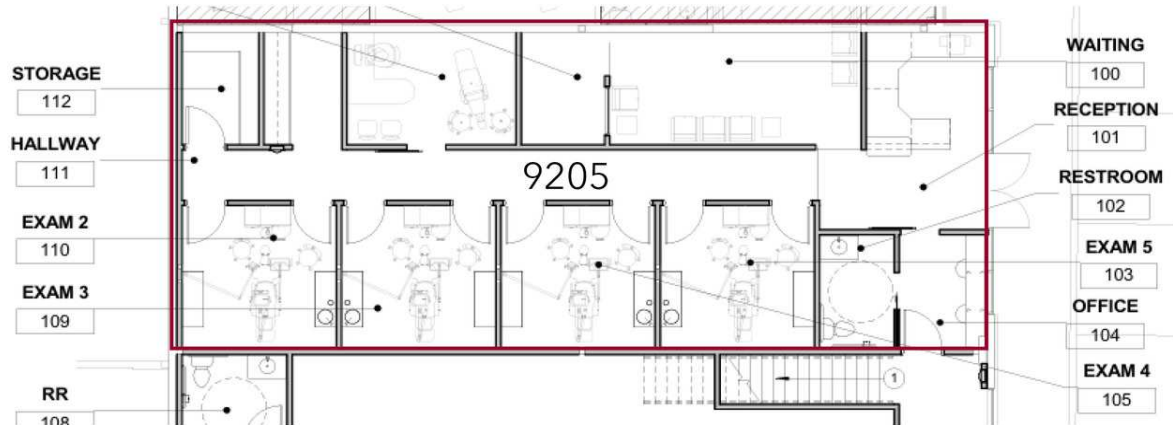
All information furnished regarding property for sale, rental or financing is from sources deemed reliable, but no warranty or representation is made to the accuracy thereof and same is submitted to errors, omissions, change of price, rental or other conditions prior to sale, lease or financing or withdrawal without notice.
No liability of any kind is to be imposed on the broker herein.

MEDICAL/PROFESSIONAL OFFICE CONDOS FOR LEASE MEDICAL CONDOS FOR SALE OR LEASE

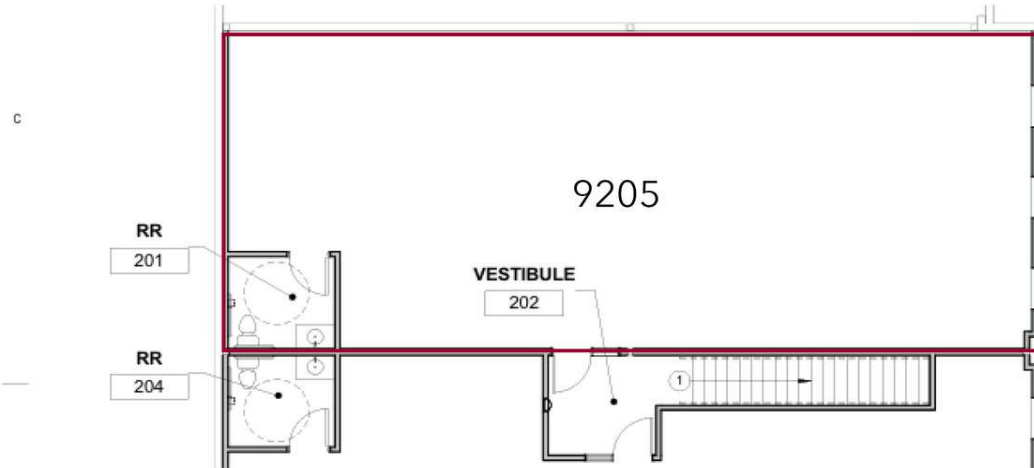
9205 & 9209 W. State St., Boise, ID 83714

9205

First Floor



Second Floor



AVAILABLE SPACES

SUITE	SIZE (SF)	LEASE TYPE	LEASE RATE
9205 1st Floor	1,602 SF	NNN	\$16.90 SF/yr
9205 2nd Floor	1,602 SF	Full Service	\$1,750 per month

Matt Mahoney, SIOR | Managing Principal
mattm@leeidaho.com
C 208.340.9780

Austin Hopkins | Principal
austinh@leeidaho.com
C 208.995.5944

All information furnished regarding property for sale, rental or financing is from sources deemed reliable, but no warranty or representation is made to the accuracy thereof and same is submitted to errors, omissions, change of price, rental or other conditions prior to sale, lease or financing or withdrawal without notice.
No liability of any kind is to be imposed on the broker herein.

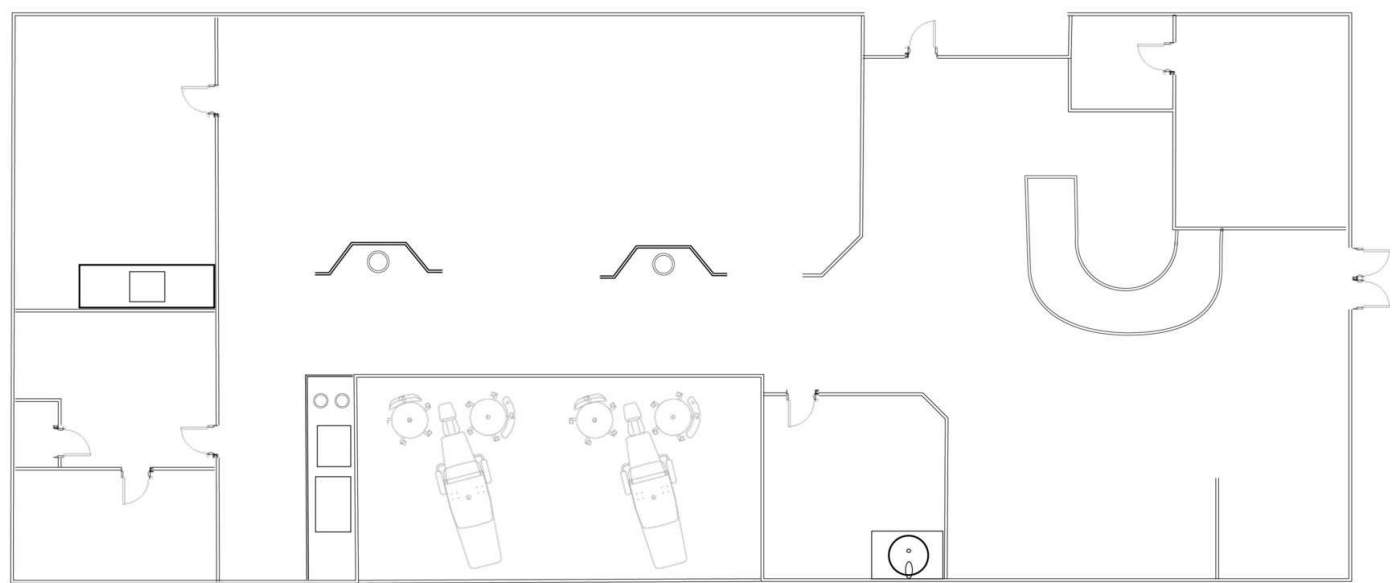
OFFICE FOR SALE/LEASE
MEDICAL CONDOS FOR SALE OR LEASE

9205 & 9209 W. State St., Boise, ID 83714



COMMERCIAL REAL ESTATE SERVICES
LEE & ASSOCIATES IDAHO, LLC

9209



AVAILABLE SPACES

SUITE	SIZE (SF)	LEASE TYPE	LEASE RATE
9209	1,446 SF	NNN	\$15.95 SF/yr

Matt Mahoney, SIOR | Managing Principal
mattm@leeidaho.com
C 208.340.9780

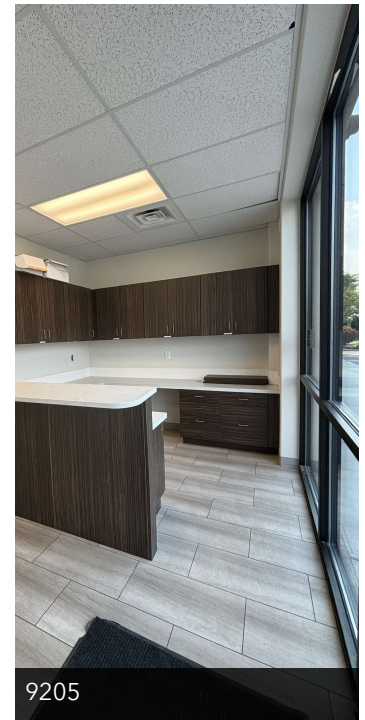
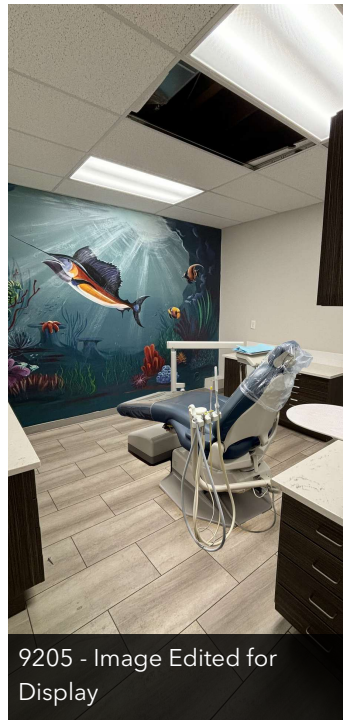
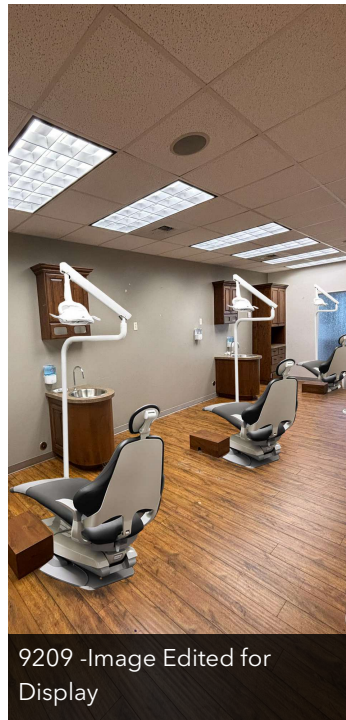
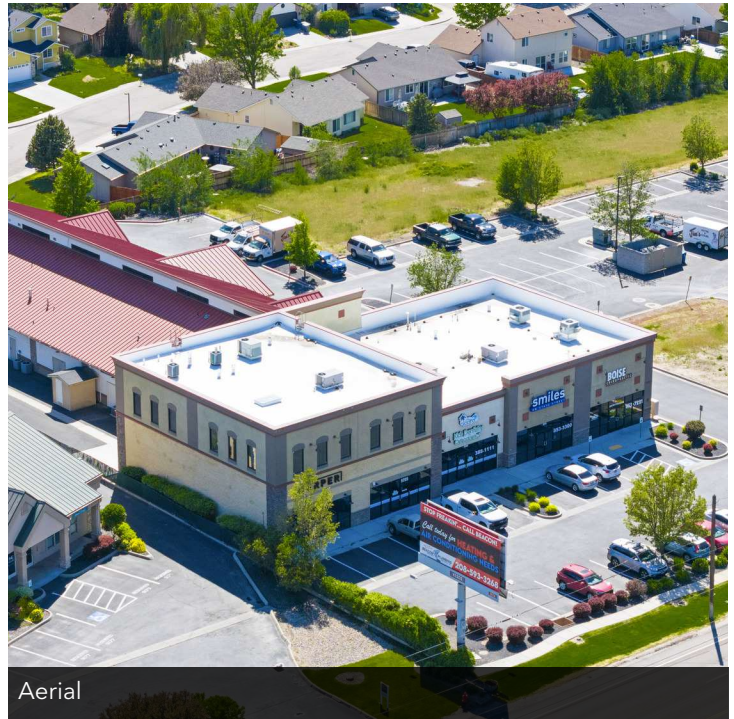
Austin Hopkins | Principal
austinh@leeidaho.com
C 208.995.5944

All information furnished regarding property for sale, rental or financing is from sources deemed reliable, but no warranty or representation is made to the accuracy thereof and same is submitted to errors, omissions, change of price, rental or other conditions prior to sale, lease or financing or withdrawal without notice.
No liability of any kind is to be imposed on the broker herein.

MEDICAL/PROFESSIONAL OFFICE CONDOS FOR LEASE MEDICAL CONDOS FOR SALE OR LEASE

9205 & 9209 W. State St., Boise, ID 83714

LEE & ASSOCIATES
COMMERCIAL REAL ESTATE SERVICES
LEE & ASSOCIATES IDAHO, LLC



Matt Mahoney, SIOR | Managing Principal
mattm@leeidaho.com
C 208.340.9780

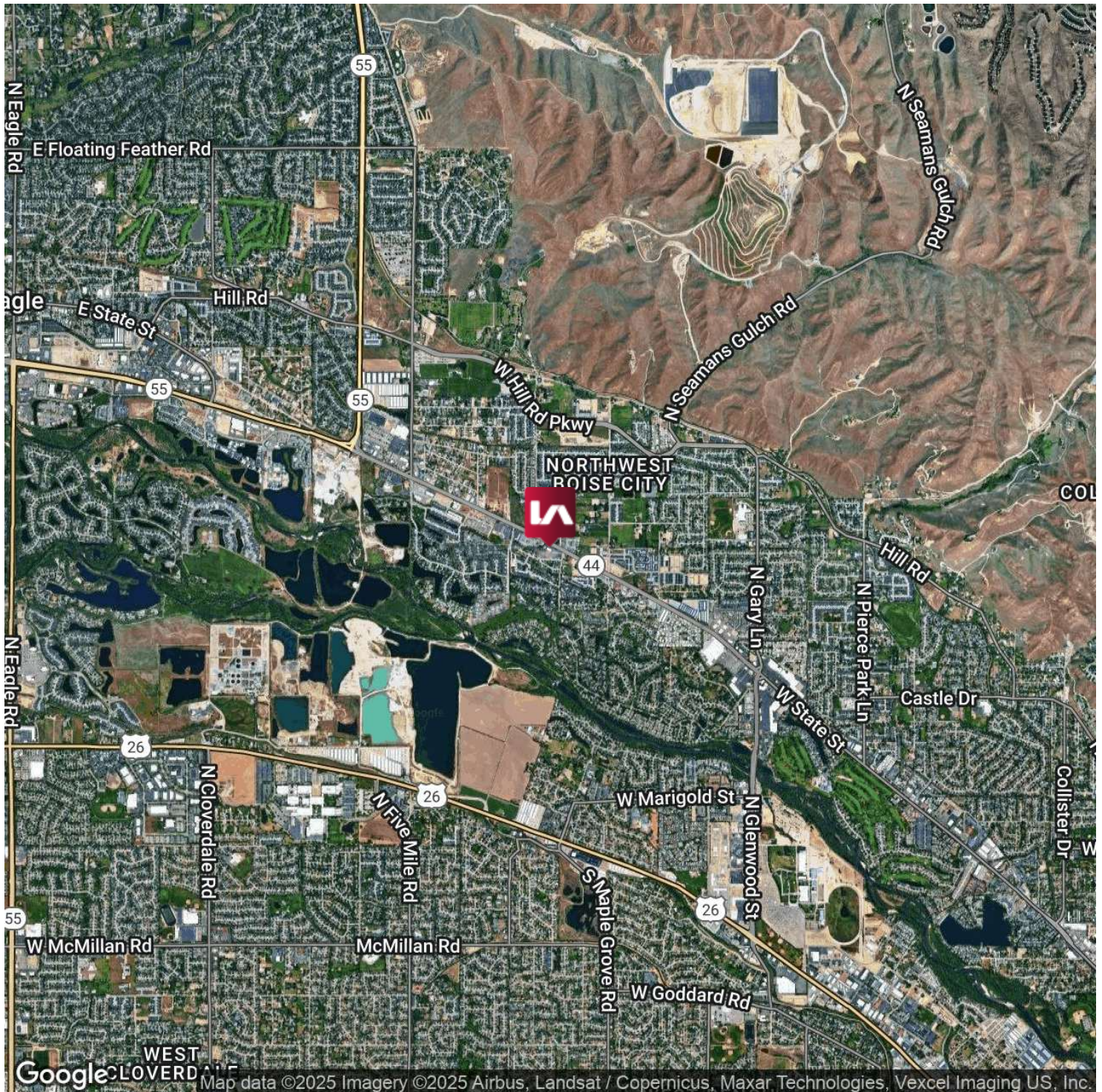
Austin Hopkins | Principal
austinh@leeidaho.com
C 208.995.5944

All information furnished regarding property for sale, rental or financing is from sources deemed reliable, but no warranty or representation is made to the accuracy thereof and same is submitted to errors, omissions, change of price, rental or other conditions prior to sale, lease or financing or withdrawal without notice.
No liability of any kind is to be imposed on the broker herein.

MEDICAL/PROFESSIONAL OFFICE CONDOS FOR LEASE MEDICAL CONDOS FOR SALE OR LEASE

9205 & 9209 W. State St., Boise, ID 83714

LEE & ASSOCIATES
COMMERCIAL REAL ESTATE SERVICES
LEE & ASSOCIATES IDAHO, LLC



Matt Mahoney, SIOR | Managing Principal
mattm@leeidaho.com
C 208.340.9780

Austin Hopkins | Principal
austinh@leeidaho.com
C 208.995.5944

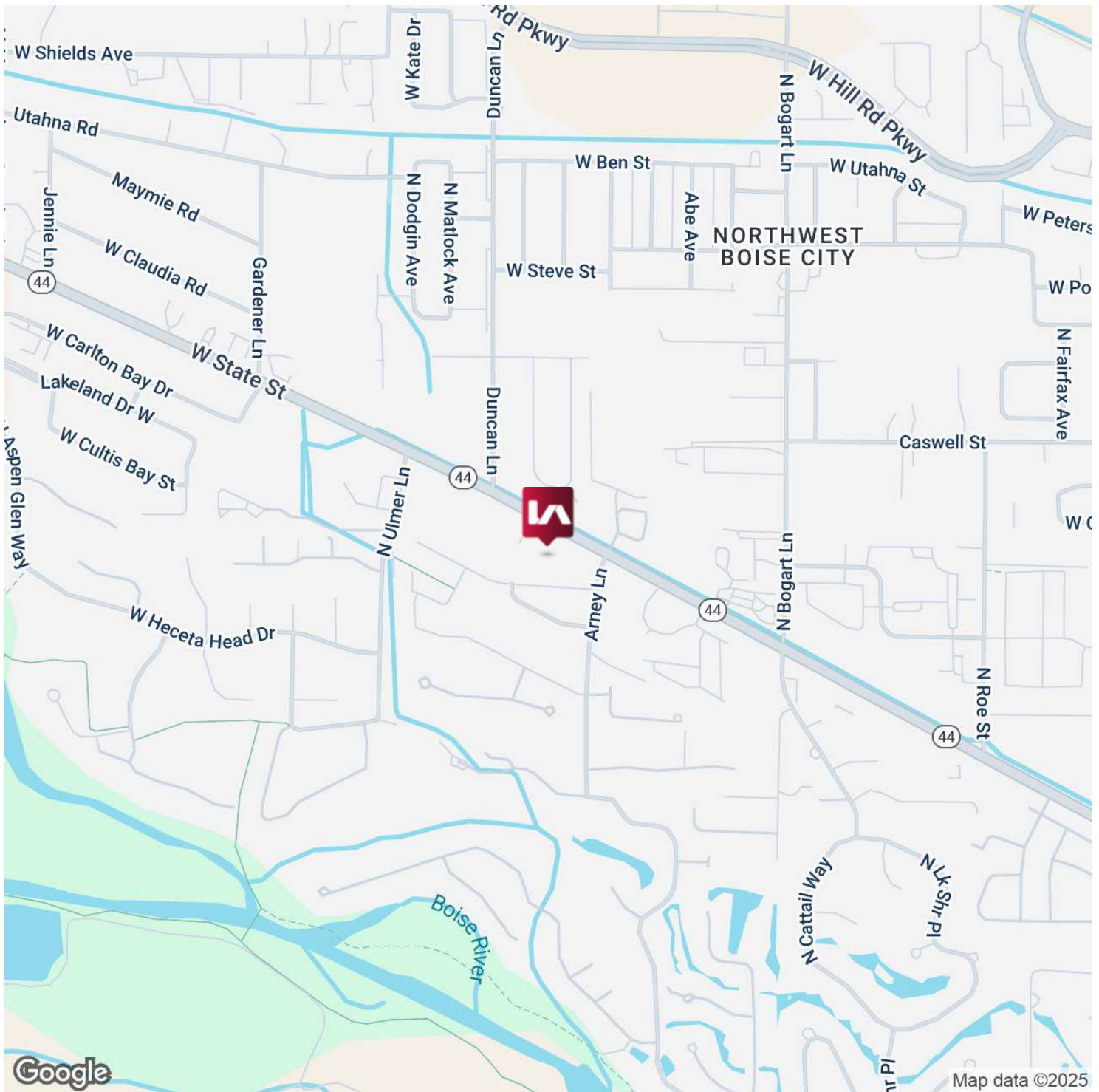
All information furnished regarding property for sale, rental or financing is from sources deemed reliable, but no warranty or representation is made to the accuracy thereof and same is submitted to errors, omissions, change of price, rental or other conditions prior to sale, lease or financing or withdrawal without notice.
No liability of any kind is to be imposed on the broker herein.

MEDICAL/PROFESSIONAL OFFICE CONDOS FOR LEASE MEDICAL CONDOS FOR SALE OR LEASE

9205 & 9209 W. State St., Boise, ID 83714



COMMERCIAL REAL ESTATE SERVICES
LEE & ASSOCIATES IDAHO, LLC



Matt Mahoney, SIOR | Managing Principal
mattm@leeidaho.com
C 208.340.9780

Austin Hopkins | Principal
austinh@leeidaho.com
C 208.995.5944

All information furnished regarding property for sale, rental or financing is from sources deemed reliable, but no warranty or representation is made to the accuracy thereof and same is submitted to errors, omissions, change of price, rental or other conditions prior to sale, lease or financing or withdrawal without notice.
No liability of any kind is to be imposed on the broker herein.

MEDICAL/PROFESSIONAL OFFICE CONDOS FOR LEASE MEDICAL CONDOS FOR SALE OR LEASE

9205 & 9209 W. State St., Boise, ID 83714

LEE & ASSOCIATES
COMMERCIAL REAL ESTATE SERVICES
LEE & ASSOCIATES IDAHO, LLC



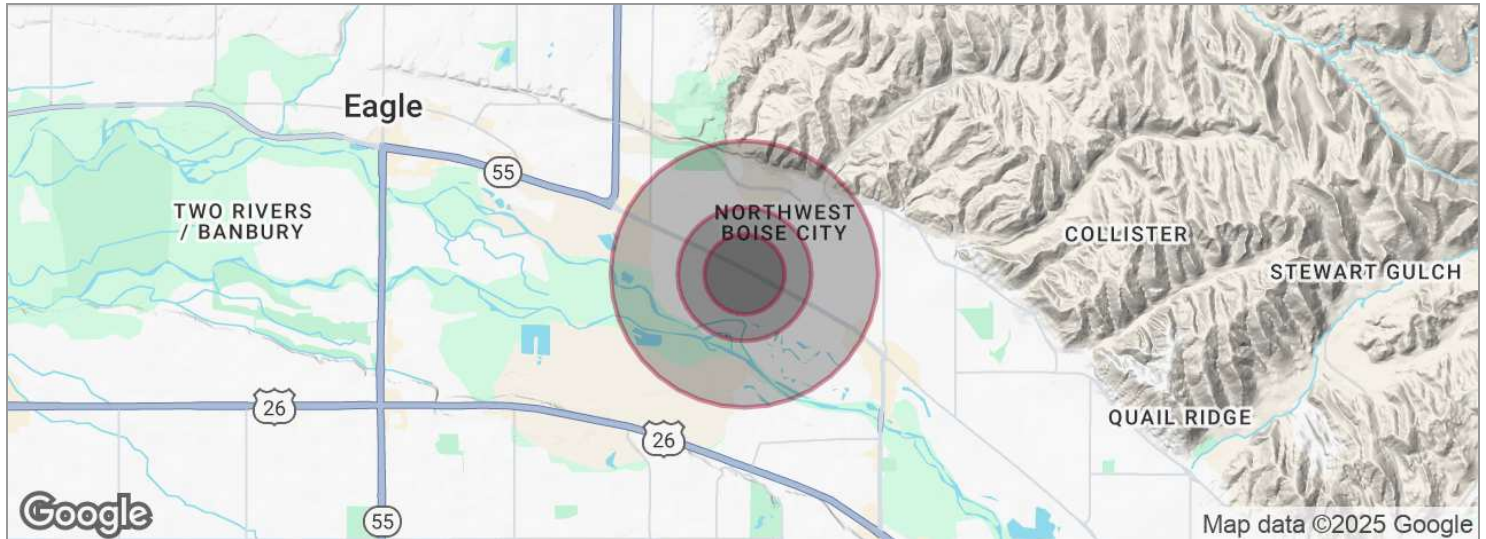
Matt Mahoney, SIOR | Managing Principal
mattm@leeidaho.com
C 208.340.9780

Austin Hopkins | Principal
austinh@leeidaho.com
C 208.995.5944

All information furnished regarding property for sale, rental or financing is from sources deemed reliable, but no warranty or representation is made to the accuracy thereof and same is submitted to errors, omissions, change of price, rental or other conditions prior to sale, lease or financing or withdrawal without notice.
No liability of any kind is to be imposed on the broker herein.

MEDICAL/PROFESSIONAL OFFICE CONDOS FOR LEASE MEDICAL CONDOS FOR SALE OR LEASE

9205 & 9209 W. State St., Boise, ID 83714



POPULATION	0.3 MILES	0.5 MILES	1 MILE
Total population	813	2,428	8,364
Median age	50	47	45
Median age (Male)	48	45	44
Median age (Female)	52	49	47
HOUSEHOLDS & INCOME	0.3 MILES	0.5 MILES	1 MILE
Total households	363	1,079	3,661
# of persons per HH	2.2	2.3	2.3
Average HH income	\$114,922	\$112,208	\$109,699
Average house value	\$624,609	\$608,369	\$586,086

*Demographic data derived from 2020 ACS - US Census

Matt Mahoney, SIOR | Managing Principal
mattm@leeidaho.com
C 208.340.9780

Austin Hopkins | Principal
austinh@leeidaho.com
C 208.995.5944

All information furnished regarding property for sale, rental or financing is from sources deemed reliable, but no warranty or representation is made to the accuracy thereof and same is submitted to errors, omissions, change of price, rental or other conditions prior to sale, lease or financing or withdrawal without notice.
No liability of any kind is to be imposed on the broker herein.