

Retail Corner Space for Lease

2412 W. Pawnee, Wichita, KS



PROPERTY HIGHLIGHTS

- Hard corner of Pawnee and Meridian
- 14,000+ Vehicles per day
- Ample Parking
- Minutes from US-400 (Kellogg Ave), K-42, & I-235
- Former Quick Trip

PROPERTY DETAILS

- Open floor plan
- 2,752 SF
- Lease rate \$14.00 NNN
- Existing office and restroom
- Term negotiable
- Dedicated pylon sign on corner with great visibility
- Entry/exit from both Pawnee & Meridian
- Zoned Limited Commercial

DEMOGRAPHICS

	1 Mile	3 Miles	5 Miles
Population	11,530	70,879	180,922
Avg. HH Income	39,824	36,782	40,100
Median Age	34.6	34.3	34.6

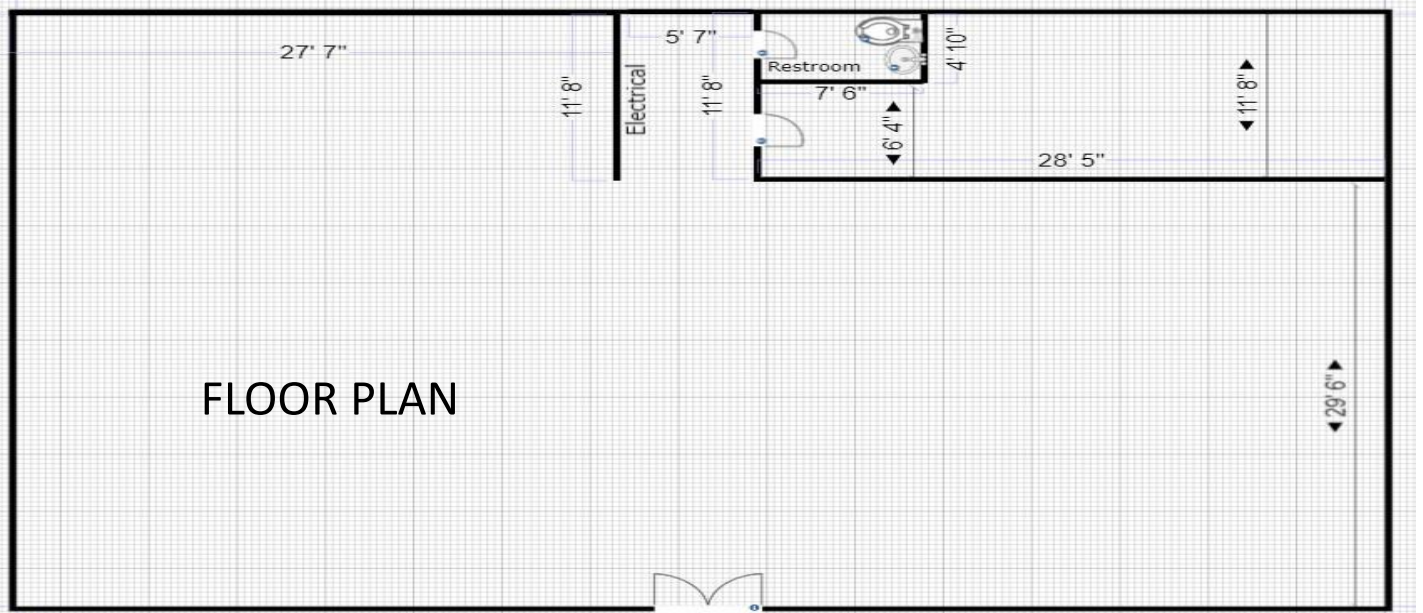
BUILDERS INCORPORATED
1081 South Glendale
Wichita, Kansas 67218
Buildersinc.com

ESTABLISHED 1942
BUILDERS INCORPORATED

316.684.1400

Retail Corner Space for Lease

2312 S. Meridian, 2312 W. Pawnee, 2400 W. Pawnee



BUILDERS INCORPORATED
1081 South Glendale
Wichita, Kansas 67218
Buildersinc.com

ESTABLISHED 1942
BUILDERS INCORPORATED

316.684.1400