

SALE OR LEASE: 22,888 SF SINGLE TENANT HEAVY POWER INDUSTRIAL BUILDING

2836 S. 49th Ave. | Phoenix, AZ 85043



PROPERTY HIGHLIGHTS

- ±22,888 SF on 1.03 AC
- ±1,200 SF Office
- 18' Clear Height
- 1 Truckwell
- 3 Grade Level Doors
 - 1 x 12'x14' Grade Level Door
 - 2 x 20'x14' Grade Level Doors
- EVAP Warehouse (HVAC Conversion in 30-days)
- 2,400 AMPS, 277/480V
- 20 Surface Parking Spaces
- A-1 City of Phoenix Zoning
- APN: 104-44-012B



Steve Mardian
+1 602 224 4460
steve.mardian@cushwake.com

Nik Vallens
+1 949 981 7725
nik.vallens@cushwake.com

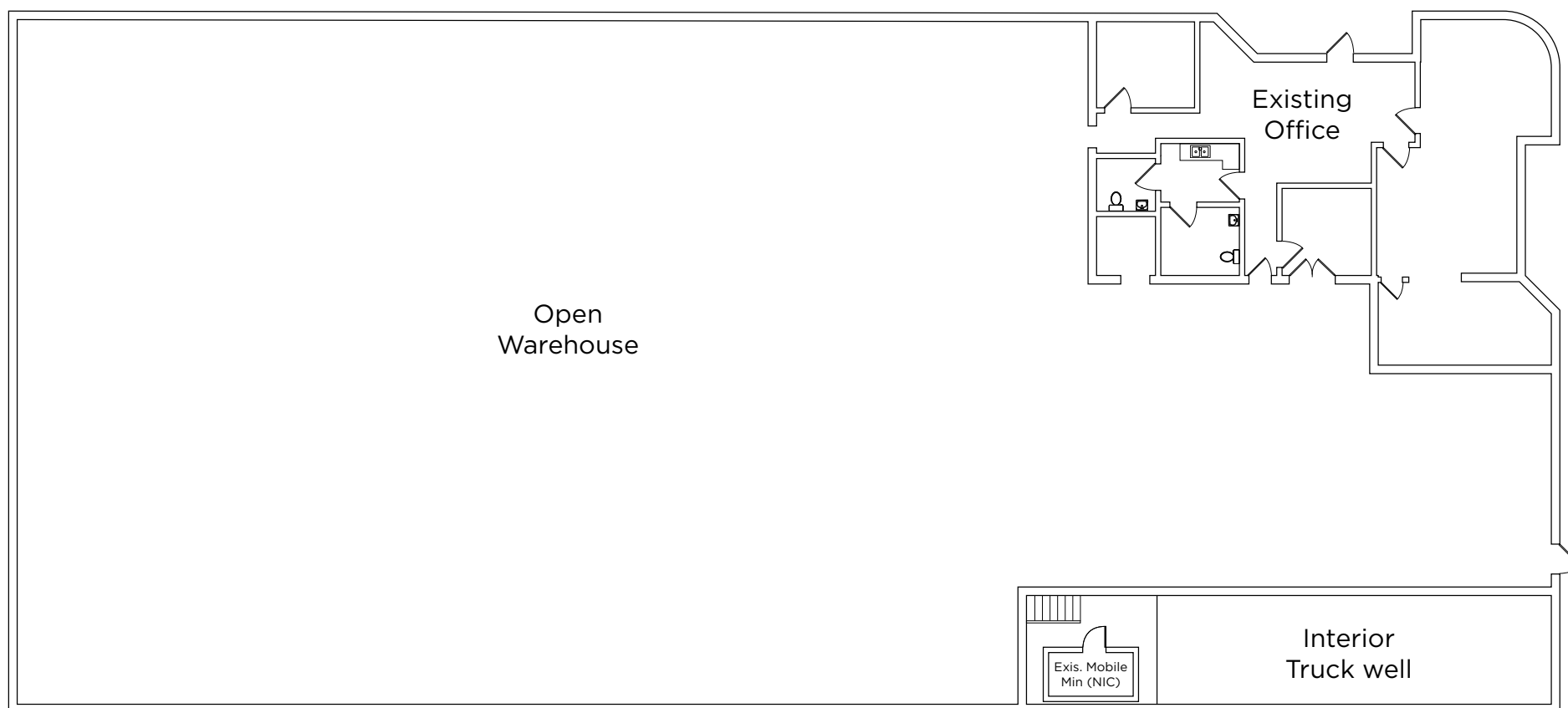
Gary Anderson
+1 602 224 4439
gary.anderson@cushwake.com

2555 East Camelback Road
Suite 400
Phoenix, AZ 85016
Direct +1 602 954 9000
Fax +1 602 468 8588

 **CUSHMAN & WAKEFIELD**
cushmanwakefield.com

SALE OR LEASE: 22,888 SF SINGLE TENANT HEAVY POWER INDUSTRIAL BUILDING

2836 S. 49th Ave. | Phoenix, AZ 85043



Steve Mardian
+1 602 224 4460
steve.mardian@cushwake.com

Nik Vallens
+1 949 981 7725
nik.vallens@cushwake.com

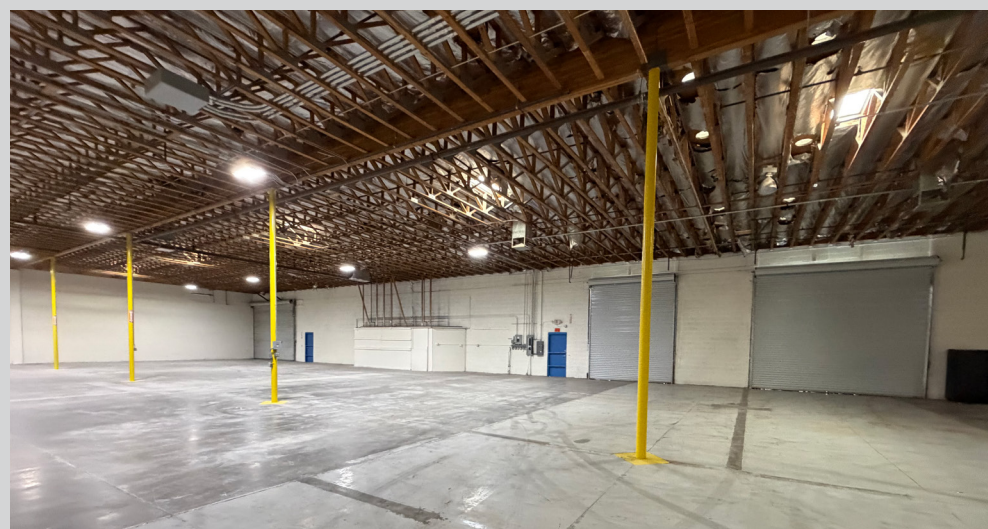
Gary Anderson
+1 602 224 4439
gary.anderson@cushwake.com

2555 East Camelback Road
Suite 400
Phoenix, AZ 85016
Direct +1 602 954 9000
Fax +1 602 468 8588

 **CUSHMAN & WAKEFIELD**
cushmanwakefield.com

SALE OR LEASE: 22,888 SF SINGLE TENANT HEAVY POWER INDUSTRIAL BUILDING

2836 S. 49th Ave. | Phoenix, AZ 85043



Steve Mardian
+1 602 224 4460
steve.mardian@cushwake.com

Nik Vallens
+1 949 981 7725
nik.vallens@cushwake.com

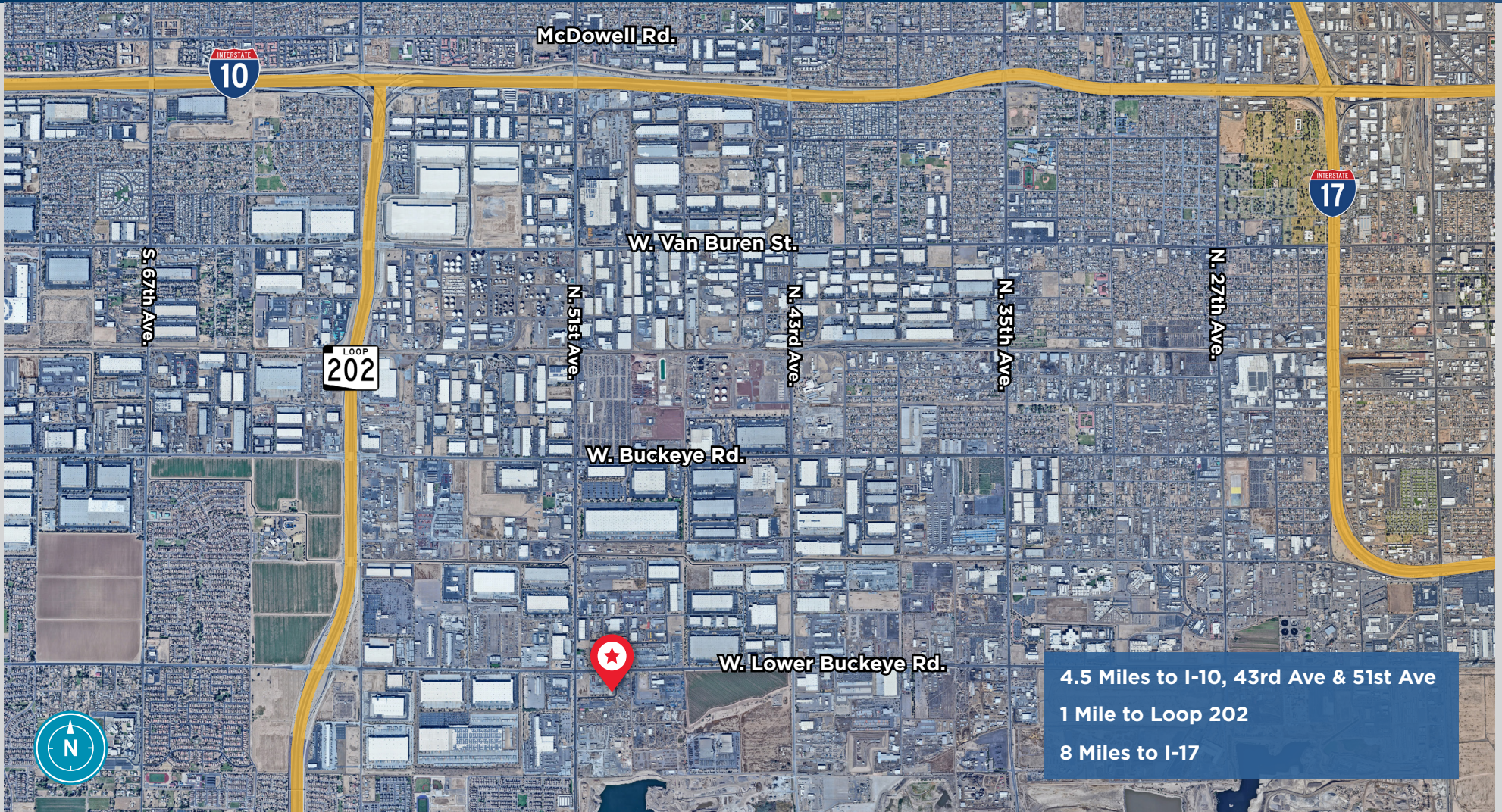
Gary Anderson
+1 602 224 4439
gary.anderson@cushwake.com

2555 East Camelback Road
Suite 400
Phoenix, AZ 85016
Direct +1 602 954 9000
Fax +1 602 468 8588

 **CUSHMAN & WAKEFIELD**
cushmanwakefield.com

SALE OR LEASE: 22,888 SF SINGLE TENANT HEAVY POWER INDUSTRIAL BUILDING

2836 S. 49th Ave. | Phoenix, AZ 85043



Steve Mardian
+1 602 224 4460
steve.mardian@cushwake.com

Nik Vallens
+1 949 981 7725
nik.vallens@cushwake.com

Gary Anderson
+1 602 224 4439
gary.anderson@cushwake.com

2555 East Camelback Road
Suite 400
Phoenix, AZ 85016
Direct + 1 602 954 9000
Fax +1 602 468 8588



cushmanwakefield.com