

Available Medical Office Space for Lease

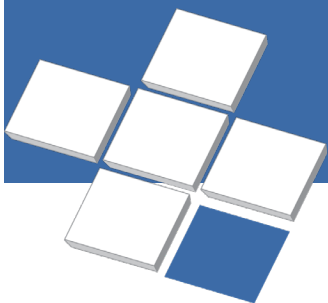
Centre Medical Plaza

855-865 Third Avenue, Chula Vista, CA 91911

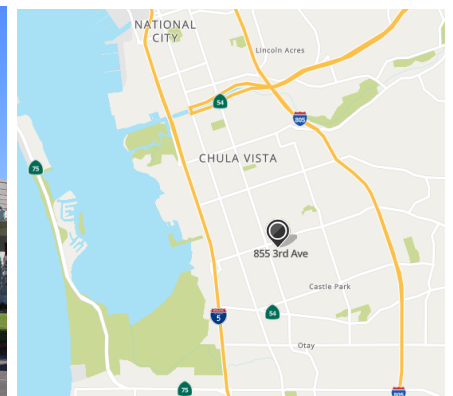


For Leasing Information:
Lael Crompton
Senior Director of Leasing
Phone: 858-794-1900
lcrompton@pmbres.com
www.pmbres.com
CA Lic. 01871298

- 855 Building: 44,977 SF, 4-story, class A medical office building
- 865 Building: 29,917 SF, single story, medical office building
- Close proximity to Scripps Mercy Chula Vista (1.5 miles) and Sharp Chula Vista Medical Center (3.5 miles)
- Major tenants and in place referral patterns; ProSciento, Rady Children's, San Ysidro Health
- Conveniently located between Interstate 5 & 805
- Ample parking within 4-Story covered garage

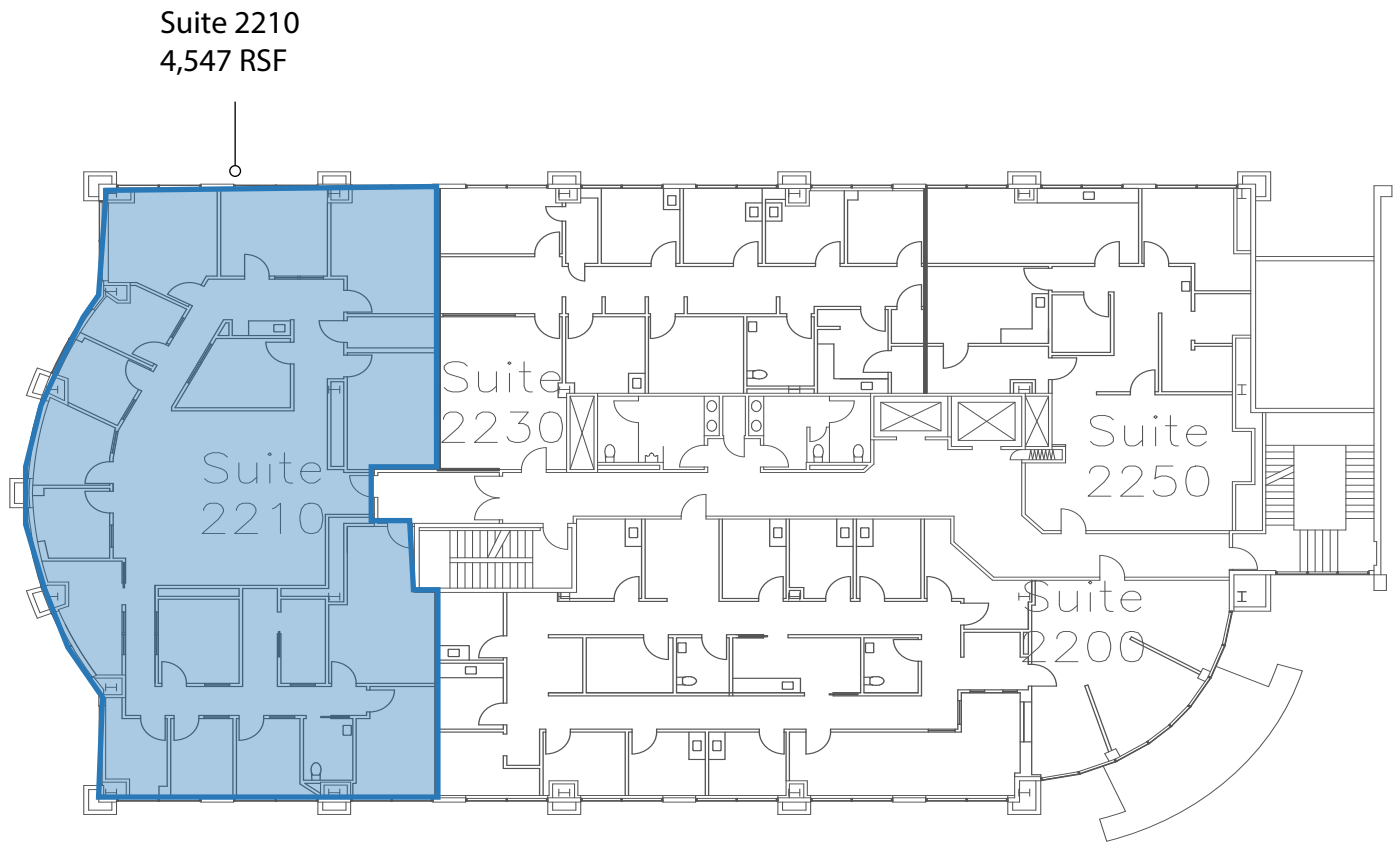


PMB
Real Estate Services
Real Estate Management Solutions for Healthcare



855 Third Avenue

2nd Floor Availabilities



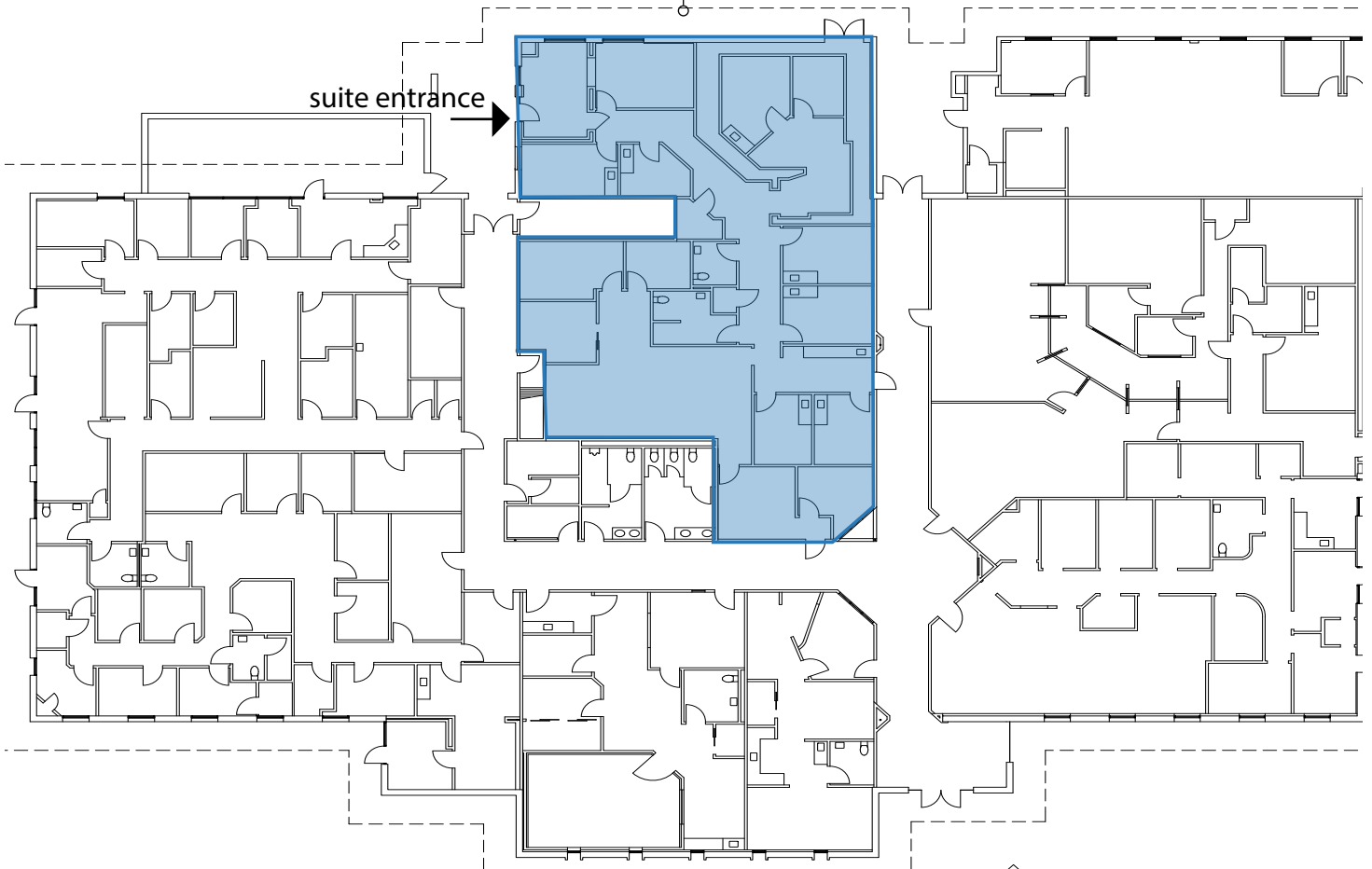
For Leasing Information:
Lael Crompton | Senior Director of Leasing
Phone: 858-794-1900 | lcrompton@pmbres.com
www.pmbres.com | CA Lic. 01871298

865 Third Avenue

1st Floor Availabilities:

Suite 100
4,384 RSF

suite entrance →



For Leasing Information:

Lael Crompton | Senior Director of Leasing

Phone: 858-794-1900 | lcrompton@pmbres.com



PMB Real Estate Services