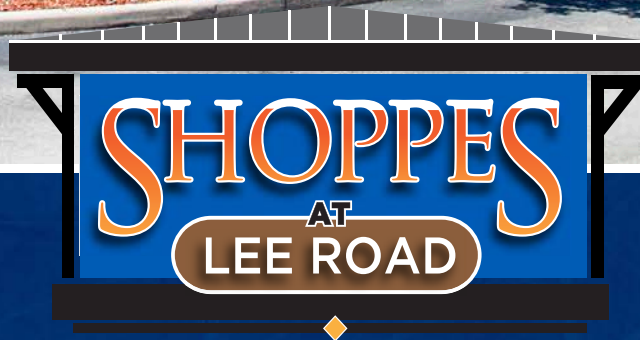
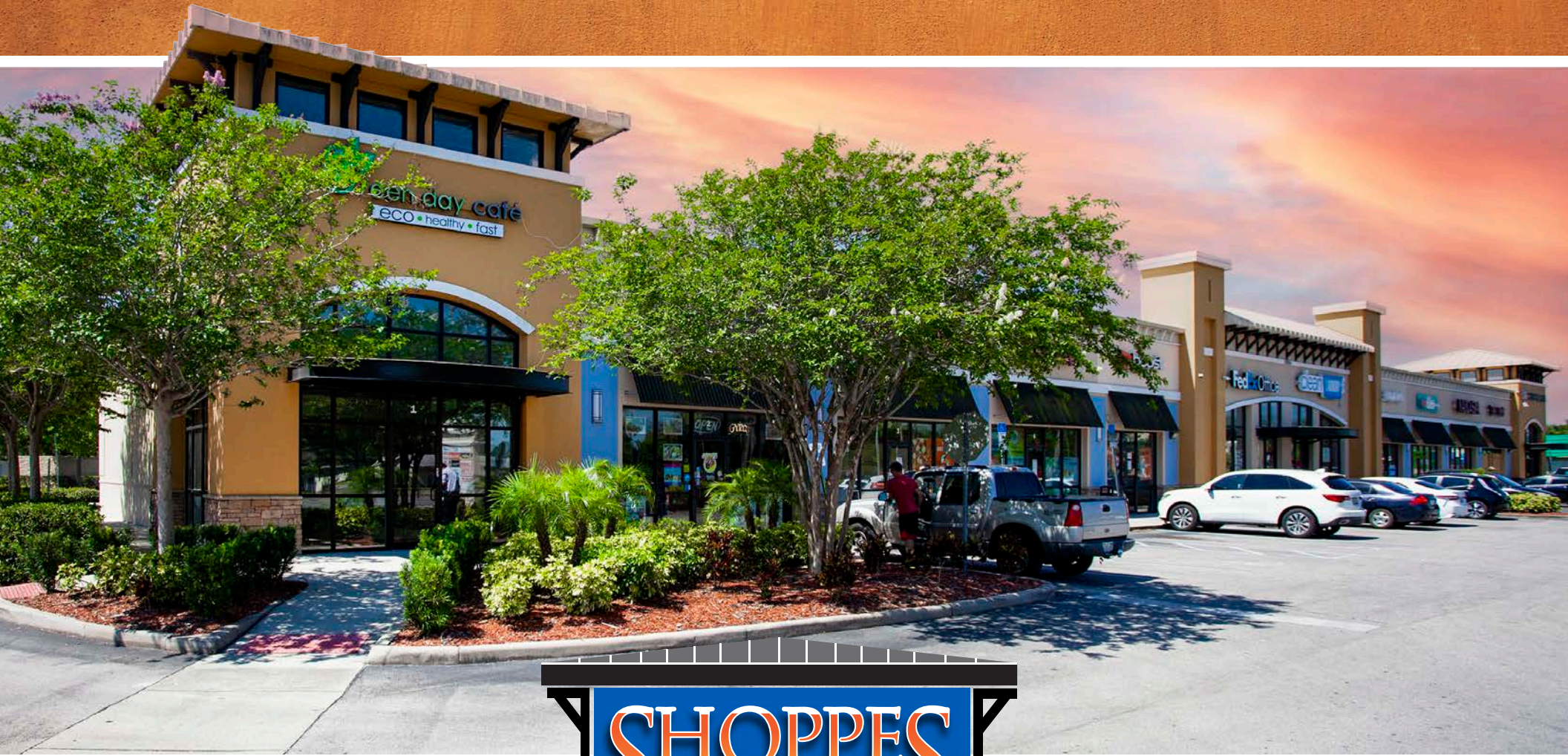


# 1,200 SQ FT RETAIL SPACE FOR LEASE

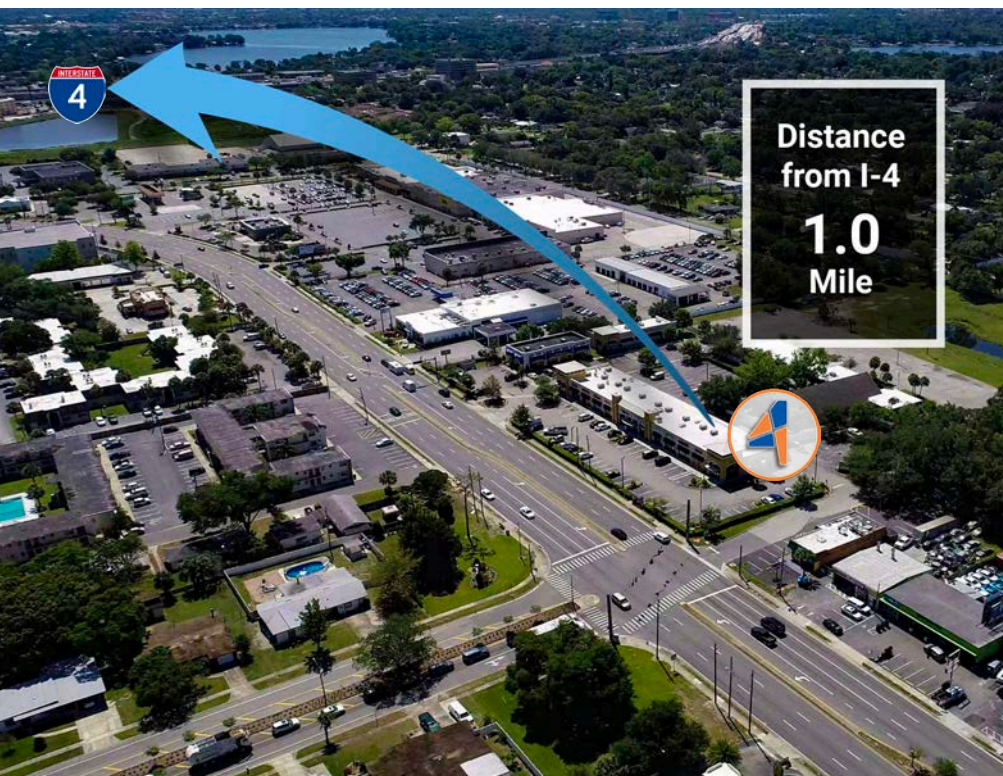


1084 LEE RD ORLANDO, FL 32810 | SUITE 5





**Parking  
Spaces**  
5.5/1,000 SF



**Distance  
from I-4**  
**1.0  
Mile**



## GREAT RETAIL OPPORTUNITY

Last opportunity to occupy at Shoppes at Lee Rd! Come join national brands like Fed Ex, Little Cesars, and Trustco Bank. This prime retail strip center opportunity features a 1,200 SF retail space that can accommodate a variety of uses.

OFFERED BY:  
**ACRE**  
COMMERCIAL



**JORDAN CACHO**  
jordan@4acre.com  
407.721.0602



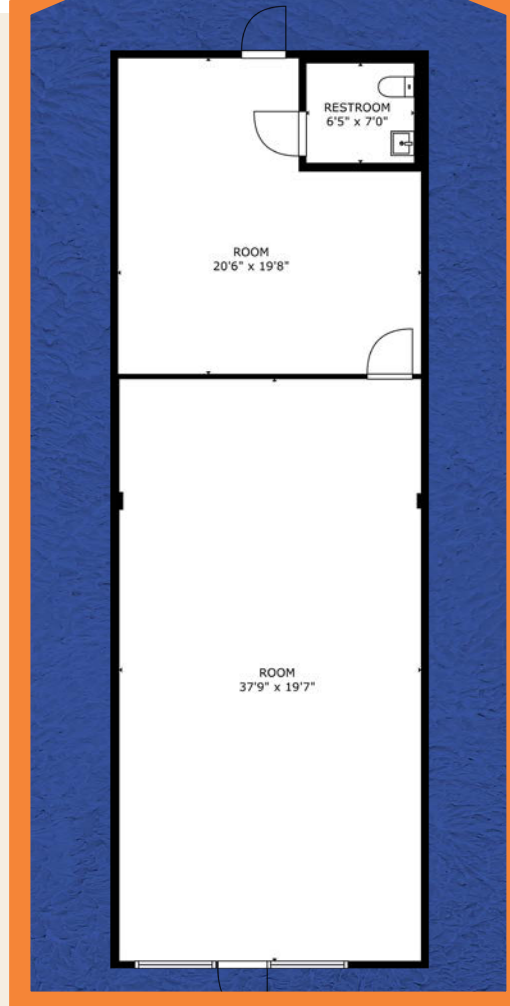
**SOLOMON ATTAWAY**  
solomon@4acre.com  
407.274.9142



# SITE MAP FEATURING AVAILABLE SPACE



# RETAIL SUITE 5 | ±1,200 SF



**SUITE 5**  
**FLOOR PLAN**  
**1,200 SF**

**Available  
Now!**



# POINTS OF INTEREST & DEMOGRAPHICS

An aerial map of a commercial area, likely in Orlando, Florida, centered around Lee Road and Interstate 4. A compass rose in the top left indicates North (N), South (S), East (E), and West (W). Numerous business logos are overlaid on the map, including:

- TESLA
- LAND ROVER
- ORLANDO MINI
- FERRARI
- CHRISTNER'S
- DUNKIN' DONUTS
- TACO BELL
- THE HOME DEPOT
- Race Trac
- Lee Road
- Firestone
- Walmart
- ORLANDO VOLKSWAGEN
- TRUSTCO BANK
- boost mobile
- FedEx
- SHOPPES (LEE ROAD)
- McDonald's
- 7-Eleven
- POPEYES
- IHOP
- FIFTH THIRD BANK

## DEMOGRAPHICS

### POPULATION

1 Mile	8,679
3 Miles	79,081
5 Miles	266,553

### HOUSEHOLDS

1 Mile	8,860
3 Miles	111,444
5 Miles	266,144

### AVERAGE HH INCOME

1 Mile	\$53,627
3 Miles	\$66,557
5 Miles	\$67,401

The logo for ACRE COMMERCIAL, featuring a stylized orange and white 'A' icon to the left of the text 'ACRE' in large, bold, white capital letters, with 'COMMERCIAL' in smaller, orange capital letters below it.

# POINTS OF INTEREST & DEMOGRAPHICS

An aerial map of a commercial area, likely in Orlando, Florida, centered around Lee Road and Interstate 4. A compass rose in the top left indicates North (N), South (S), East (E), and West (W). Numerous business logos are overlaid on the map, including:

- TESLA
- LAND ROVER
- ORLANDO MINI
- FERRARI
- CHRISTNER'S
- DUNKIN' DONUTS
- TACO BELL
- THE HOME DEPOT
- Race Trac
- Lee Road
- Firestone
- Walmart
- ORLANDO VOLKSWAGEN
- TRUSTCO BANK
- boost mobile
- FedEx
- SHOPPES (LEE ROAD)
- McDonald's
- 7-Eleven
- POPEYES
- IHOP
- FIFTH THIRD BANK

## DEMOGRAPHICS

### POPULATION

1 Mile	8,679
3 Miles	79,081
5 Miles	266,553

### HOUSEHOLDS

1 Mile	8,860
3 Miles	111,444
5 Miles	266,144

### AVERAGE HH INCOME

1 Mile	\$53,627
3 Miles	\$66,557
5 Miles	\$67,401

The logo for ACRE COMMERCIAL, featuring a stylized orange and white 'A' icon to the left of the text 'ACRE' in large, bold, white capital letters, with 'COMMERCIAL' in smaller, orange capital letters below it.

# POINTS OF INTEREST & DEMOGRAPHICS

An aerial map of a commercial area, likely in Orlando, Florida, centered around Lee Road and Interstate 4. A compass rose in the top left indicates North (N), South (S), East (E), and West (W). Numerous business logos are overlaid on the map, including:

- TESLA
- LAND ROVER
- ORLANDO MINI
- FERRARI
- CHRISTNER'S
- DUNKIN' DONUTS
- TACO BELL
- THE HOME DEPOT
- Race Trac
- Lee Road
- Firestone
- Walmart
- ORLANDO VOLKSWAGEN
- TRUSTCO BANK
- boost mobile
- FedEx
- SHOPPES (LEE ROAD)
- McDonald's
- 7-Eleven
- POPEYES
- IHOP
- FIFTH THIRD BANK

## DEMOGRAPHICS

### POPULATION

1 Mile	8,679
3 Miles	79,081
5 Miles	266,553

### HOUSEHOLDS

1 Mile	8,860
3 Miles	111,444
5 Miles	266,144

### AVERAGE HH INCOME

1 Mile	\$53,627
3 Miles	\$66,557
5 Miles	\$67,401

The logo for ACRE COMMERCIAL, featuring a stylized orange and white 'A' icon to the left of the text 'ACRE' in large, bold, white capital letters, with 'COMMERCIAL' in smaller, orange capital letters below it.

# POINTS OF INTEREST & DEMOGRAPHICS

An aerial map of a commercial area, likely in Orlando, Florida, centered around Lee Road and Interstate 4. A compass rose in the top left indicates North (N), South (S), East (E), and West (W). Numerous business logos are overlaid on the map, including:

- TESLA
- LAND ROVER
- ORLANDO MINI
- FERRARI
- CHRISTNER'S
- DUNKIN' DONUTS
- TACO BELL
- THE HOME DEPOT
- Race Trac
- Lee Road
- Firestone
- Walmart
- ORLANDO VOLKSWAGEN
- TRUSTCO BANK
- boost mobile
- FedEx
- SHOPPE'S (LEE ROAD)
- McDonald's
- 7-Eleven
- POPEYES
- IHOP
- FIFTH THIRD BANK

## DEMOGRAPHICS

### POPULATION

1 Mile	8,679
3 Miles	79,081
5 Miles	266,553

### HOUSEHOLDS

1 Mile	8,860
3 Miles	111,444
5 Miles	266,144

### AVERAGE HH INCOME

1 Mile	\$53,627
3 Miles	\$66,557
5 Miles	\$67,401

The logo for ACRE COMMERCIAL, featuring a stylized orange and white geometric design to the left of the text "ACRE" in large, bold, white capital letters, with "COMMERCIAL" in smaller, orange capital letters below it.

# POINTS OF INTEREST & DEMOGRAPHICS

An aerial map of a commercial area, likely in Orlando, Florida, centered around Lee Road and Interstate 4. A compass rose in the top left indicates North (N), South (S), East (E), and West (W). Numerous business logos are overlaid on the map, including:

- TESLA
- LAND ROVER
- ORLANDO MINI
- FERRARI
- CHRISTNER'S
- DUNKIN' DONUTS
- TACO BELL
- THE HOME DEPOT
- Race Trac
- Lee Road
- Firestone
- Walmart
- ORLANDO VOLKSWAGEN
- TRUSTCO BANK
- boost mobile
- FedEx
- SHOPPE'S (LEE ROAD)
- McDonald's
- 7-Eleven
- POPEYES
- IHOP
- FIFTH THIRD BANK

## DEMOGRAPHICS

### POPULATION

1 Mile	8,679
3 Miles	79,081
5 Miles	266,553

### HOUSEHOLDS

1 Mile	8,860
3 Miles	111,444
5 Miles	266,144

### AVERAGE HH INCOME

1 Mile	\$53,627
3 Miles	\$66,557
5 Miles	\$67,401

The logo for ACRE COMMERCIAL, featuring a stylized orange and white geometric design to the left of the text "ACRE" in large, bold, white capital letters, with "COMMERCIAL" in smaller, orange capital letters below it.

# POINTS OF INTEREST & DEMOGRAPHICS

An aerial map of a commercial area, likely in Orlando, Florida, centered around Lee Road and Interstate 4. A compass rose in the top left indicates North (N), South (S), East (E), and West (W). Numerous business logos are overlaid on the map, including:

- TESLA
- LAND ROVER
- ORLANDO MINI
- FERRARI
- CHRISTNER'S
- DUNKIN' DONUTS
- TACO BELL
- THE HOME DEPOT
- Race Trac
- Lee Road
- Firestone
- Walmart
- ORLANDO VOLKSWAGEN
- TRUSTCO BANK
- boost mobile
- FedEx
- SHOPPES (LEE ROAD)
- McDonald's
- 7-Eleven
- POPEYES
- IHOP
- FIFTH THIRD BANK

## DEMOGRAPHICS

### POPULATION

1 Mile	8,679
3 Miles	79,081
5 Miles	266,553

### HOUSEHOLDS

1 Mile	8,860
3 Miles	111,444
5 Miles	266,144

### AVERAGE HH INCOME

1 Mile	\$53,627
3 Miles	\$66,557
5 Miles	\$67,401

The logo for ACRE COMMERCIAL, featuring a stylized orange and white 'A' icon to the left of the text 'ACRE' in large, bold, white capital letters, with 'COMMERCIAL' in smaller, orange capital letters below it.

# POINTS OF INTEREST & DEMOGRAPHICS

An aerial map of a commercial area, likely in Orlando, Florida, centered around Lee Road and Interstate 4. A compass rose in the top left indicates North (N), South (S), East (E), and West (W). Numerous business logos are overlaid on the map, including:

- TESLA
- LAND ROVER
- ORLANDO MINI
- FERRARI
- CHRISTNER'S
- DUNKIN' DONUTS
- TACO BELL
- THE HOME DEPOT
- Race Trac
- Lee Road
- Firestone
- Walmart
- ORLANDO VOLKSWAGEN
- TRUSTCO BANK
- boost mobile
- FedEx
- SHOPPES (LEE ROAD)
- McDonald's
- 7-Eleven
- POPEYES
- IHOP
- FIFTH THIRD BANK

## DEMOGRAPHICS

### POPULATION

1 Mile	8,679
3 Miles	79,081
5 Miles	266,553

### HOUSEHOLDS

1 Mile	8,860
3 Miles	111,444
5 Miles	266,144

### AVERAGE HH INCOME

1 Mile	\$53,627
3 Miles	\$66,557
5 Miles	\$67,401

The logo for ACRE COMMERCIAL, featuring a stylized orange and white geometric design to the left of the text "ACRE" in large, bold, white capital letters, with "COMMERCIAL" in smaller, orange capital letters below it.

# POINTS OF INTEREST & DEMOGRAPHICS

## DEMOGRAPHICS

### POPULATION

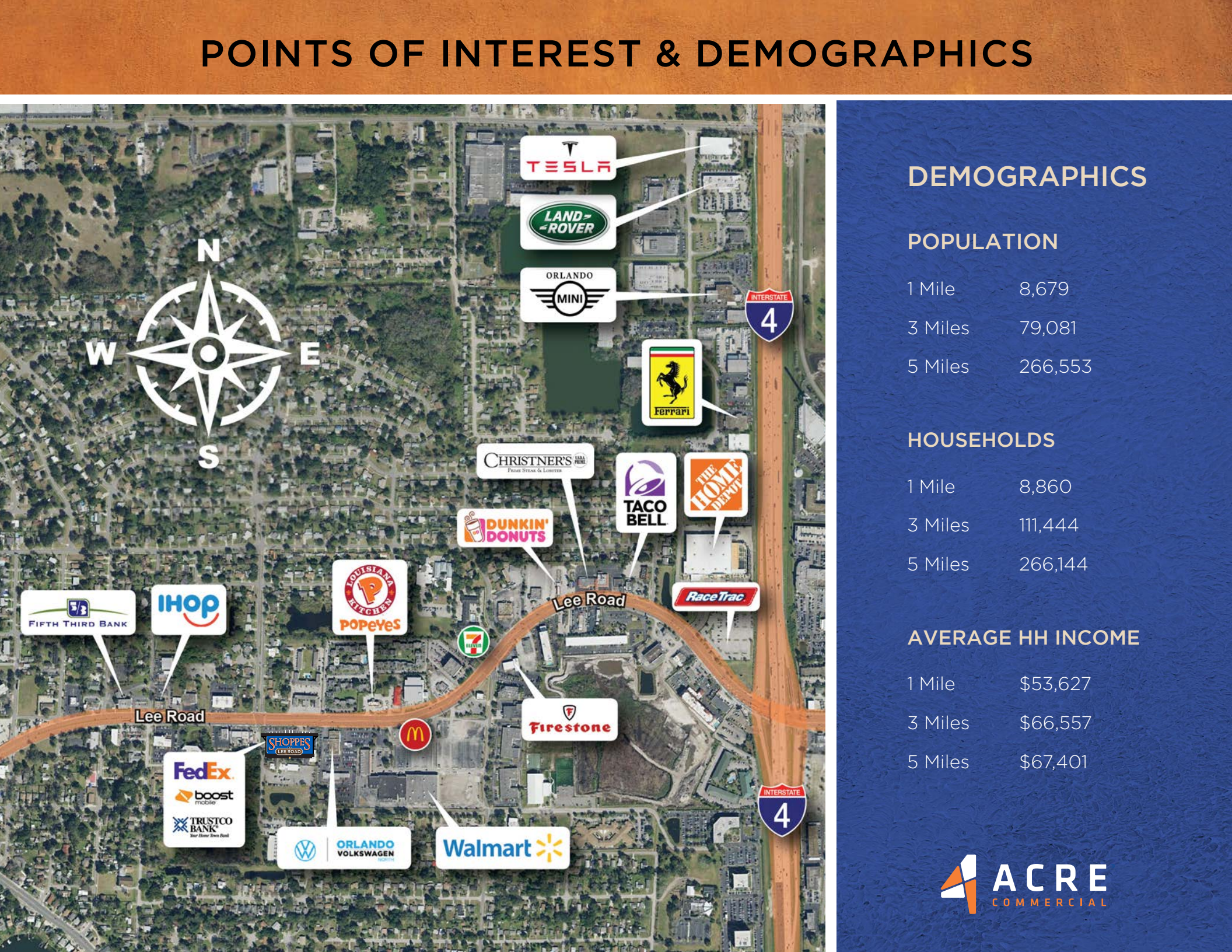
1 Mile	8,679
3 Miles	79,081
5 Miles	266,553

### HOUSEHOLDS

1 Mile	8,860
3 Miles	111,444
5 Miles	266,144

### AVERAGE HH INCOME

1 Mile	\$53,627
3 Miles	\$66,557
5 Miles	\$67,401







**JORDAN CACHO**

jordan@4acre.com

**407.721.0602**

**SOLOMON ATTAWAY**

solomon@4acre.com

**407.274.9142**

4 Acre Commercial Real Estate (4 Acre) does not represent or warranty the accuracy of the information contained herein. Such information has been given to 4 Acre by the owner of the property or obtained from other sources deemed reliable. 4 Acre has no reason to doubt its accuracy, but does not guarantee it. The reviewer(s) of this document is encouraged to perform their own research for their own purposes to verify the dependability of the information being reviewed. All information should be verified by reviewer(s) prior to purchase or lease. Unless otherwise noted, the property is being offered as-is, where is, with all faults. This information represents the proprietary work product of 4 Acre Realty, LLC and may not be copied, reproduced, modified, distributed, published, transmitted, or otherwise disclosed without the express written consent of 4 Acre Realty, LLC.