

1430 JOH AVENUE, SUITE M

Baltimore, MD 21227
Baltimore County

OFFICE/FLEX FOR LEASE



PROPERTY HIGHLIGHTS

- **Suite M:** 7,520 SF
- 1- Story
- End Unit
- Office/Flex
- Free and unreserved parking
- 24 hour access
- Within 5 minutes of Baltimore's CBD
- Convenient to banks, restaurants and gas stations
- Attractively Landscaped
- Aggressively priced at \$10.95/SF, NNN

LEASED BY:

NAIkl**nb**

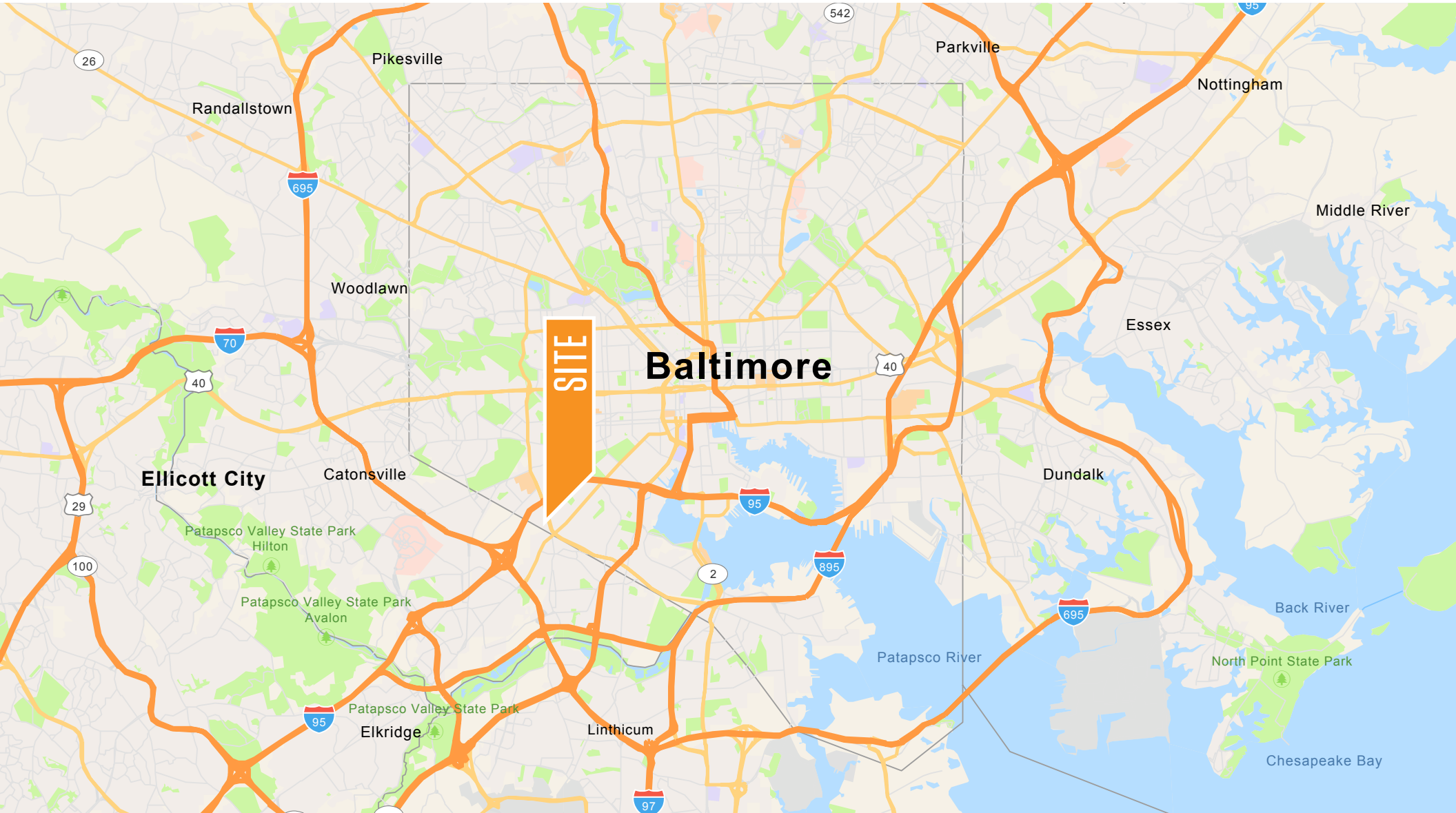
Jim Caronna, SIOR
jcaronna@kl**nb**.com
443-632-2070

100 West Road, Suite 505, Towson, MD 21204
kl**nb**.com

1430 JOH AVENUE, SUITE M

Baltimore, MD 21227
Baltimore County

LOCATION



Jim Caronna, SIOR
jcaronna@klnb.com
443-632-2070

100 West Road, Suite 505
Towson, MD 21204
klnb.com

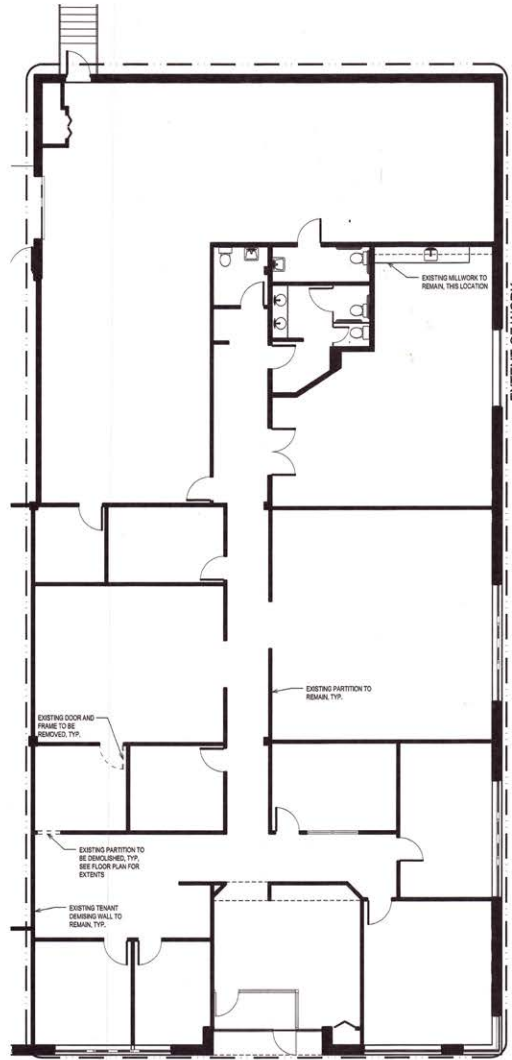


1430 JOH AVENUE, SUITE M

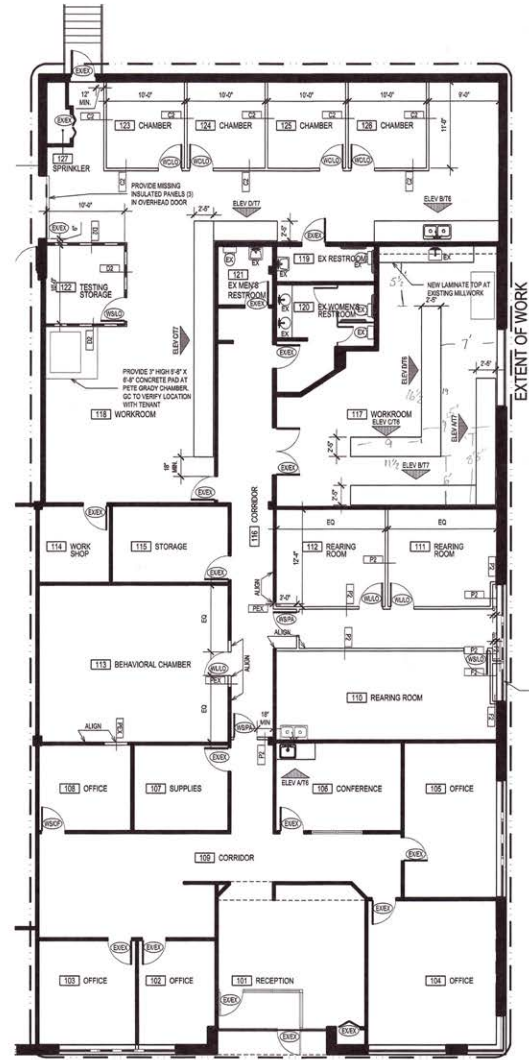
Baltimore, MD 21227
Baltimore County

AVAILABILITY

SUITE M: 7,520 SF



Possible Demo



As-Built

1430 JOH AVENUE, SUITE M

Baltimore, MD 21227

Baltimore County

[CLICK TO VIEW PROPERTY WEBSITE](#)

For More Information, Please Contact:

Jim Caronna, SIOR
jcaronna@klnb.com
443-632-2070



While we have no reason to doubt the accuracy of any of the information supplied, we cannot, and do not, guarantee its accuracy. All information should be independently verified prior to a purchase or lease of the property. We are not responsible for errors, omissions, misuse, or misinterpretation of information contained herein and make no warranty of any kind, express or implied, with respect to the property or any other matters.

100 West Road, Suite 505
Towson, MD 21204
klnb.com

