

Heisley Road - Land Adjacent to Diamond Center

15.42± Acres Vacant Land - M-1 Zoned

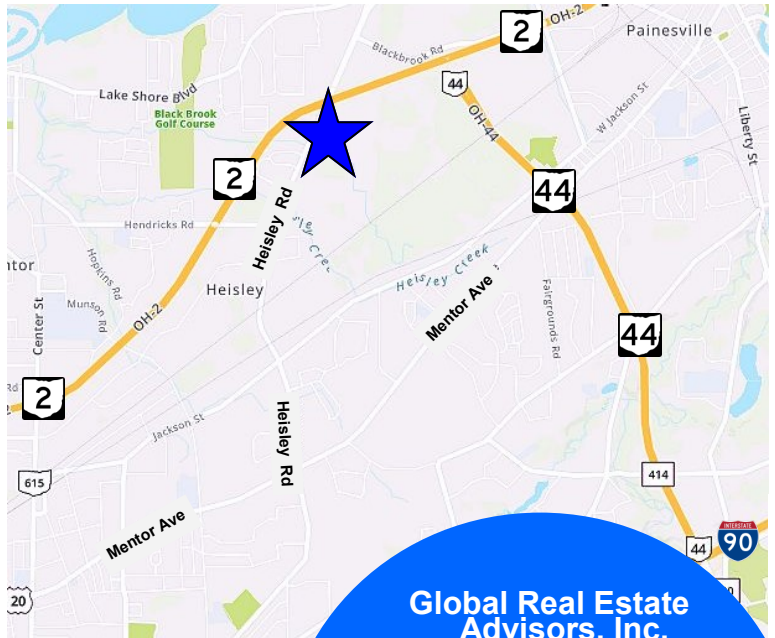
Mentor, Ohio 44060 (Lake County)

Latitude: 41.71293
Longitude: -81.30076



Property Features:

- 15.42± Acres
- PP# 16-B-065-0-00-006 & 16-B-065-0-00-005
- Zoned M-1, Light Industrial (Commercial with Conditional Use)
- 585± Feet of Frontage on Heisley Road
- All Utilities at Site
- Adjacent to LaMalfa's Party Center and Hotel
- Close Proximity to SR 2, SR 44 and I-90
- Outstanding Site for Hotel, Fast Food Restaurants, Storage
- High Traffic Area
- Economic Incentives Available



Call for Pricing



www.GlobalCommercialRE.com
8585 East Ave., Mentor, Ohio 44060

Real Estate Advisors Inc.
BROKER

**Global Real Estate
Advisors, Inc.**

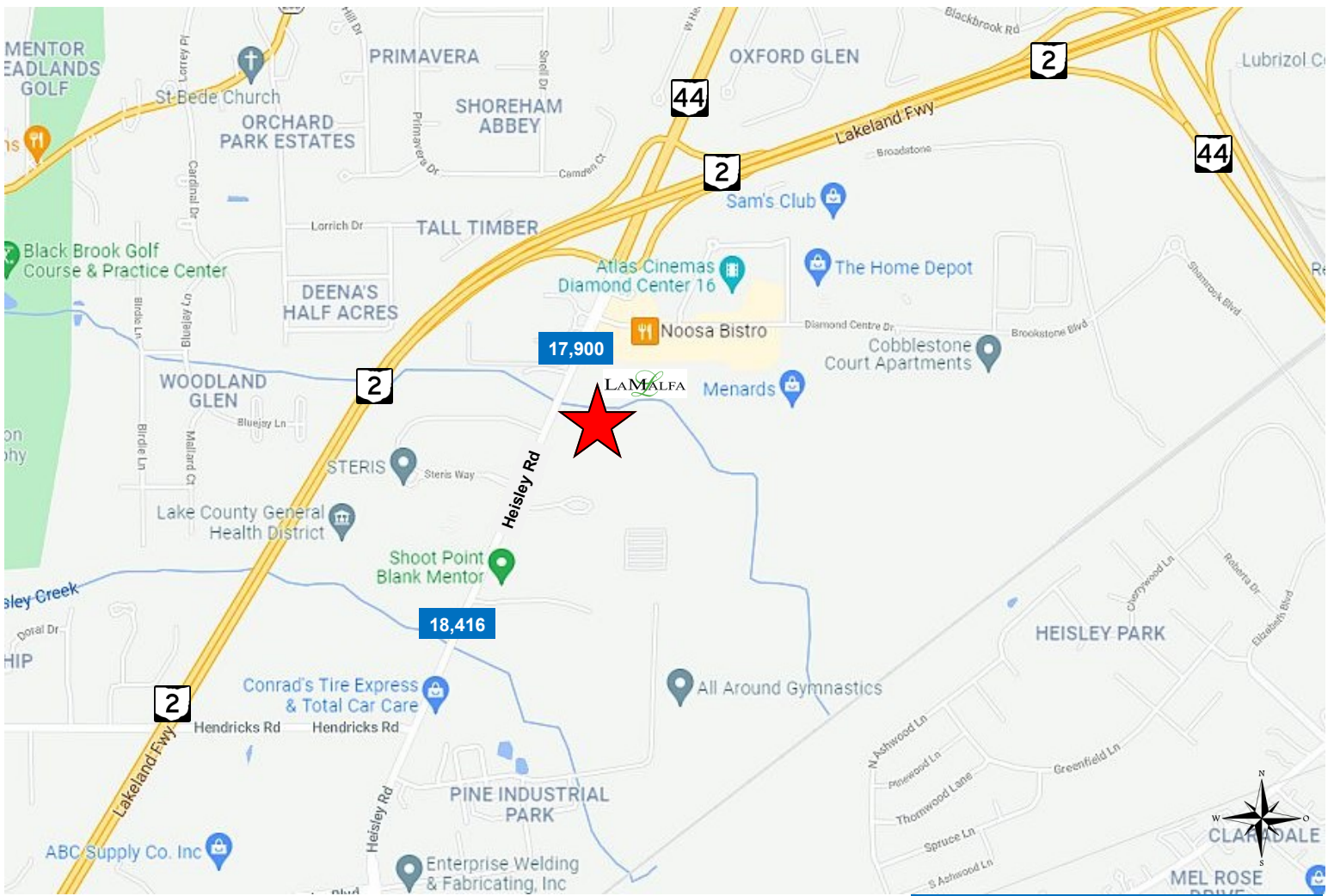
Neil Sawicki, SIOR, Broker
440-255-5552 x 221
440-339-8585 Cell

Neil@GlobalCommercialRE.com

This information has been secured from sources we believe are reliable, but we make no representations or warranties, expressed or implied, as to the accuracy of the information. References to condition, square footage or age are approximate. Buyer or Tenant acknowledges that they are relying on their own investigations and are not relying on Broker provided information. Procuring broker shall only be entitled to a commission, calculated in accordance with the rates approved by our principal only if such procuring broker executes a brokerage agreement acceptable to us and our principal and the conditions as set forth in the brokerage agreement are fully and unconditionally satisfied. Although all information furnished regarding property for sale, rental, or financing is from sources deemed reliable, such information has not been verified and no express representation is made nor is any to be implied as to the accuracy thereof and it is submitted subject to errors, omissions, change of price, rental or other conditions, prior sale, lease or financing, or withdrawal without notice and to any special conditions imposed by our principal.

Heisley Road - Land Adjacent to Diamond Center
15.42± Acres Vacant Land - M-1 Zoned
 Mentor, Ohio 44060 (Lake County)

Latitude: 41.71242
 Longitude: -81.299527



2021 Demographics by STDB	1 Mile	3 Mile	5 Mile
Population	3,440	48,107	101,121
Total Households	1,443	19,492	40,704
Average Household Income	\$95,161	\$78,760	\$83,364
Total Housing Units	1,566	21,001	43,837

Daily Traffic Count by STDB



www.GlobalCommercialRE.com
 8585 East Ave., Mentor, Ohio 44060

Real Estate Advisors Inc.
 BROKER

Global Real Estate Advisors, Inc.
 Neil Sawicki, SIOR, Broker
 440-255-5552 x 221
 440-339-8585 Cell
Neil@GlobalCommercialRE.com

This information has been secured from sources we believe are reliable, but we make no representations or warranties, expressed or implied, as to the accuracy of the information. References to condition, square footage or age are approximate. Buyer or Tenant acknowledges that they are relying on their own investigations and are not relying on Broker provided information. Procuring broker shall only be entitled to a commission, calculated in accordance with the rates approved by our principal only if such procuring broker executes a brokerage agreement acceptable to us and our principal and the conditions as set forth in the brokerage agreement are fully and unconditionally satisfied. Although all information furnished regarding property for sale, rental, or financing is from sources deemed reliable, such information has not been verified and no express representation is made nor is any to be implied as to the accuracy thereof and it is submitted subject to errors, omissions, change of price, rental or other conditions, prior sale, lease or financing, or withdrawal without notice and to any special conditions imposed by our principal.