

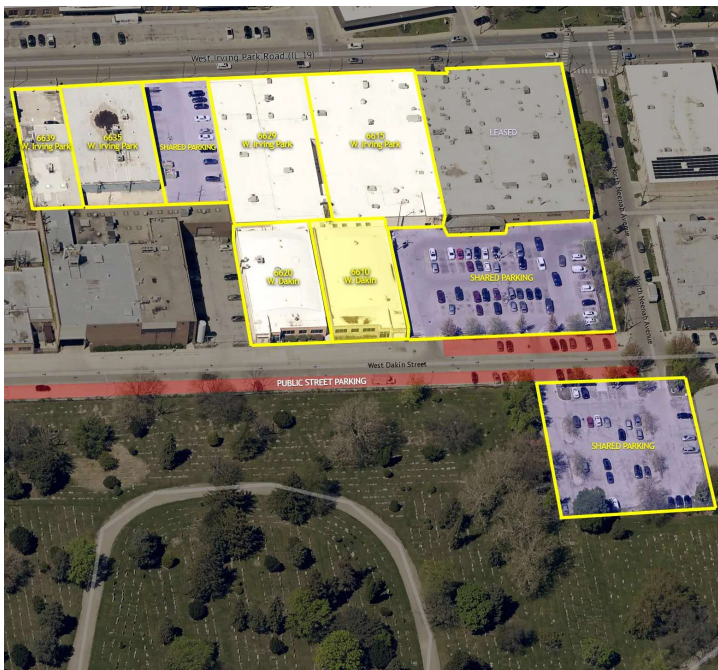
# 10,715 SF

## Industrial/Commercial Property For Lease



**BROWN**  
COMMERCIAL GROUP, INC.

**6610 W. DAKIN ST., CHICAGO, IL 60634**



### 6610 W. DAKIN ST., CHICAGO

- 10,715 SF
- 25% Office Space
- 12' Clear Height
- 1 Drive-in Door
- 1 Dock
- 125 Amp, 480 Volt, 3 Phase Power
- Kitchenette
- 3 Showers
- Taxes: \$3.28 SF
- CAM: \$1.65 SF
- Lease Rate: Subject to Offer
- Available Immediately

**COLLIN TYRRELL**

847.758.9200 x303

CTYRRELL@BROWNCOMMERCIAL.COM

**PAT CROWLEY**

847.758.9200 x310

PCROWLEY@BROWNCOMMERCIAL.COM

**DAN BROWN, SIOR**

847.758.9200 x302

DBROWN@BROWNCOMMERCIAL.COM

[BROWNCOMMERCIAL.COM](http://BROWNCOMMERCIAL.COM)

//

1400 E. HIGGINS RD. SUITE A, ELK GROVE VILLAGE, IL 60007

//

847.758.9200

No warranties or representations is made as to the accuracy of the foregoing information. Terms and availability are subject to changes or withdrawal without notice

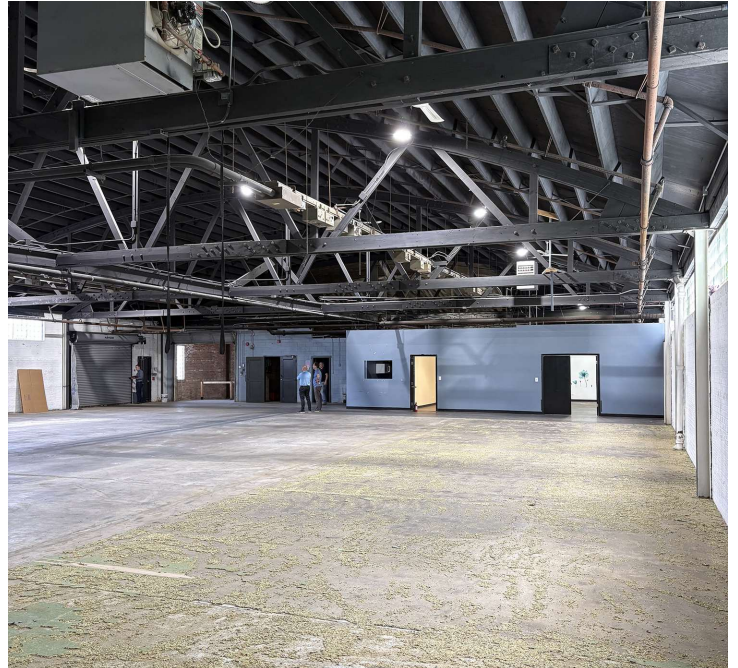
# 10,715 SF

## Industrial/Commercial Property For Lease



**BROWN**  
COMMERCIAL GROUP, INC.

6610 W. DAKIN ST., CHICAGO, IL 60634



**COLLIN TYRRELL**

847.758.9200 x303

CTYRRELL@BROWNCOMMERCIAL.COM

**PAT CROWLEY**

847.758.9200 x310

PCROWLEY@BROWNCOMMERCIAL.COM

**DAN BROWN, SIOR**

847.758.9200 x302

DBROWN@BROWNCOMMERCIAL.COM

BROWNCOMMERCIAL.COM

//

1400 E. HIGGINS RD. SUITE A, ELK GROVE VILLAGE, IL 60007

//

847.758.9200

No warranties or representations is made as to the accuracy of the foregoing information. Terms and availability are subject to changes or withdrawal without notice

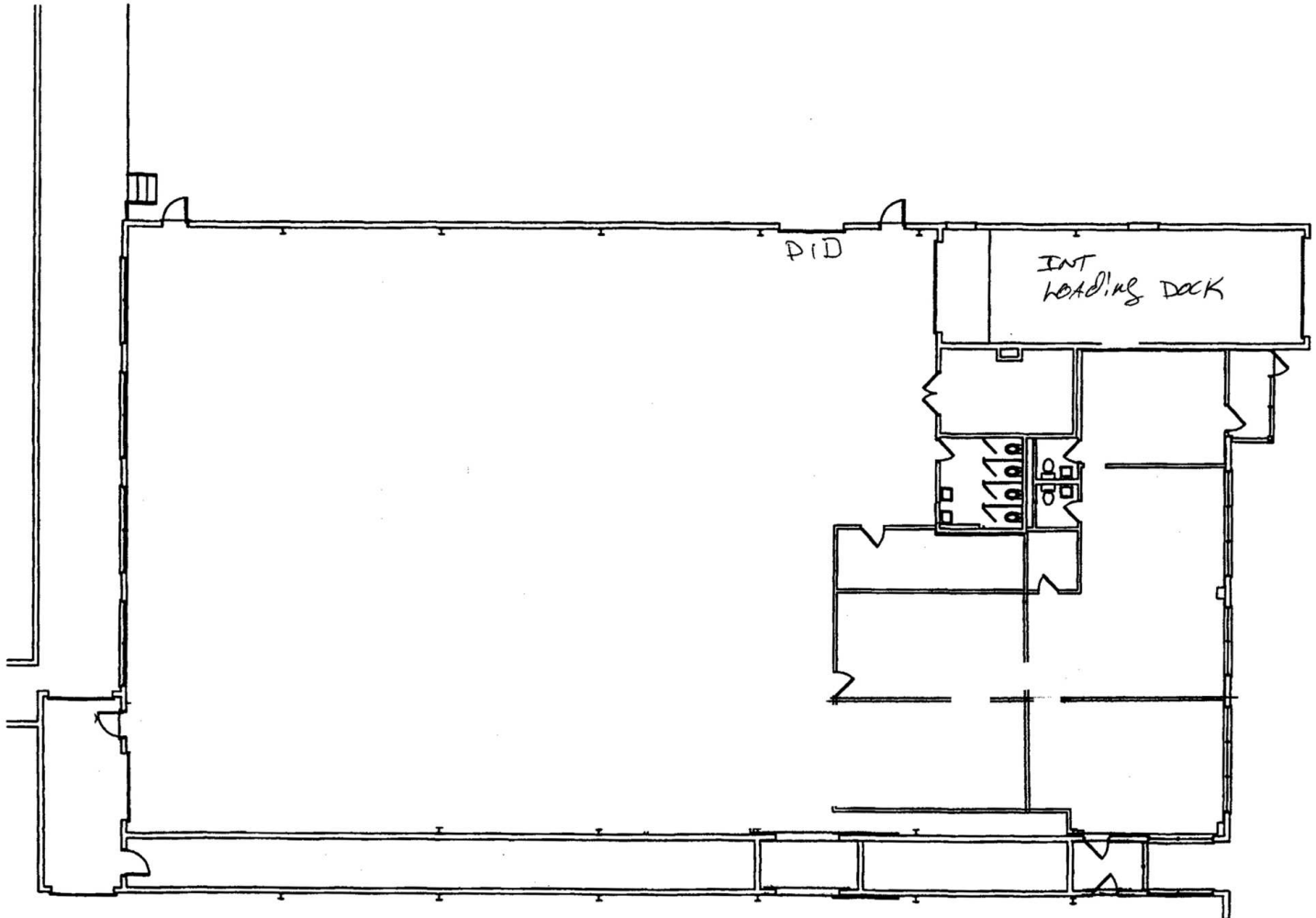
# 10,715 SF SF

## Industrial/Commercial Property For Lease



**BROWN**  
COMMERCIAL GROUP, INC.

6610 W. DAKIN ST., CHICAGO, IL 60634



### Floor Plan

Scale: 1/16" = 1'-0"



### Building #5

6610 West Dakin  
Chicago, Illinois

**COLLIN TYRRELL**

847.758.9200 x303

CTYRRELL@BROWNCOMMERCIAL.COM

**PAT CROWLEY**

847.758.9200 x310

PCROWLEY@BROWNCOMMERCIAL.COM

**DAN BROWN, SIOR**

847.758.9200 x302

DBROWN@BROWNCOMMERCIAL.COM

BROWNCOMMERCIAL.COM



1400 E. HIGGINS RD. SUITE A, ELK GROVE VILLAGE, IL 60007



847.758.9200

No warranties or representations is made as to the accuracy of the foregoing information. Terms and availability are subject to changes or withdrawal without notice