



FOR LEASE 262±SF UP TO 2,616±SF OFFICE SPACES

379 S. LIVERMORE AVENUE, LIVERMORE, CA 94550

LOCAL EXPERTISE. INTERNATIONAL REACH. WORLD CLASS.



 BUILDING/COMMON AREAS VIRTUAL TOUR

PROPERTY HIGHLIGHTS



262±SF up to 2,616±SF Office Spaces



Common Area Kitchen and Restroom



Suite C1: ±478 SF

Suite C2: ±262 SF

Suite C3: ±262 SF

Suite C4: ±262 SF

Suite C5: ±262 SF

Suite C6: ±262 SF

Suite C7: ±350 SF

Suite C8: ±478 SF

 SUITE C2 VIRTUAL TOUR

 SUITE C3 VIRTUAL TOUR

 SUITE C4 VIRTUAL TOUR

 SUITE C5 VIRTUAL TOUR

 SUITE C6 VIRTUAL TOUR

 SUITE C7 VIRTUAL TOUR

 SUITE C8 VIRTUAL TOUR



Parking available



Ideally located within walking distance to Downtown Livermore

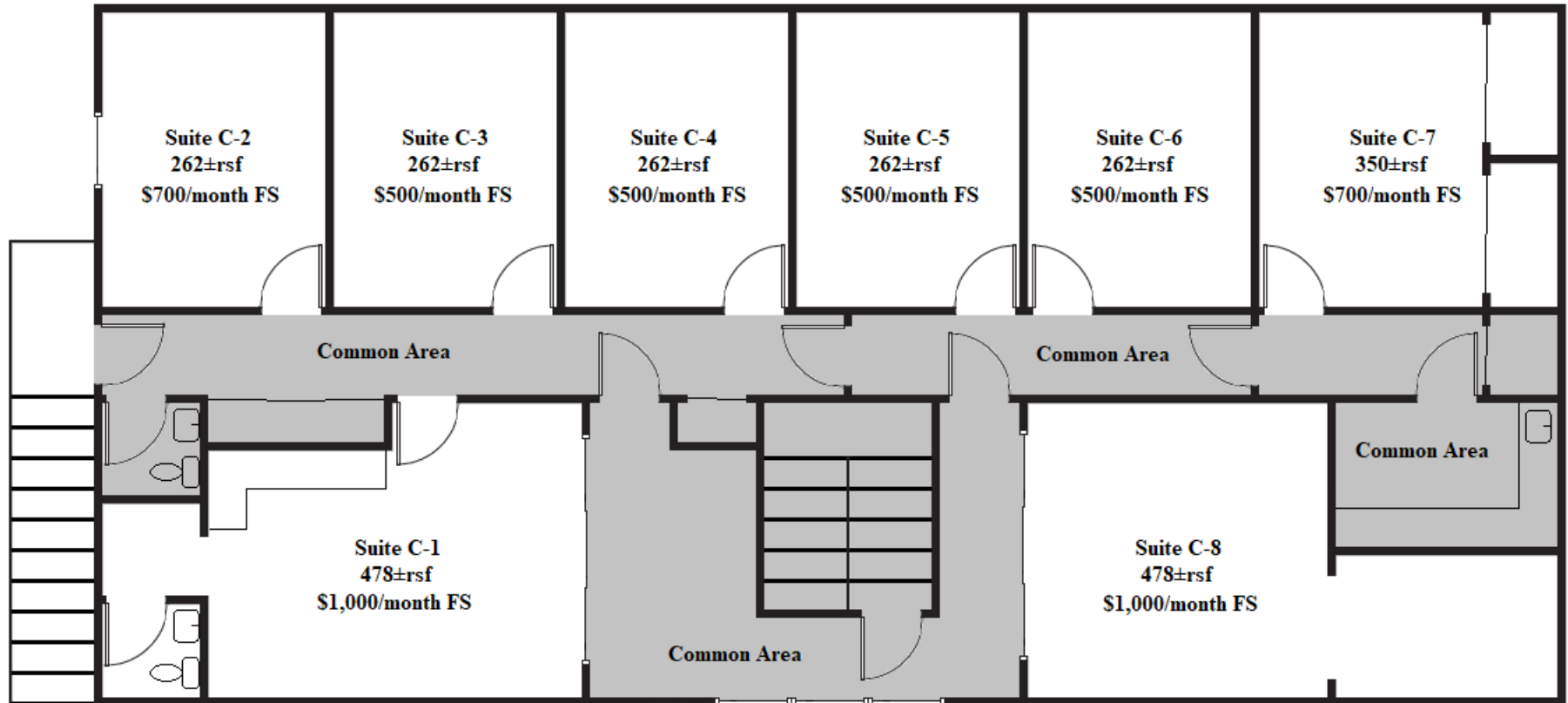


Lease rate: Please refer to floorplan for pricing

*Suites can be combined for larger configurations

379
S. LIVERMORE AVE.

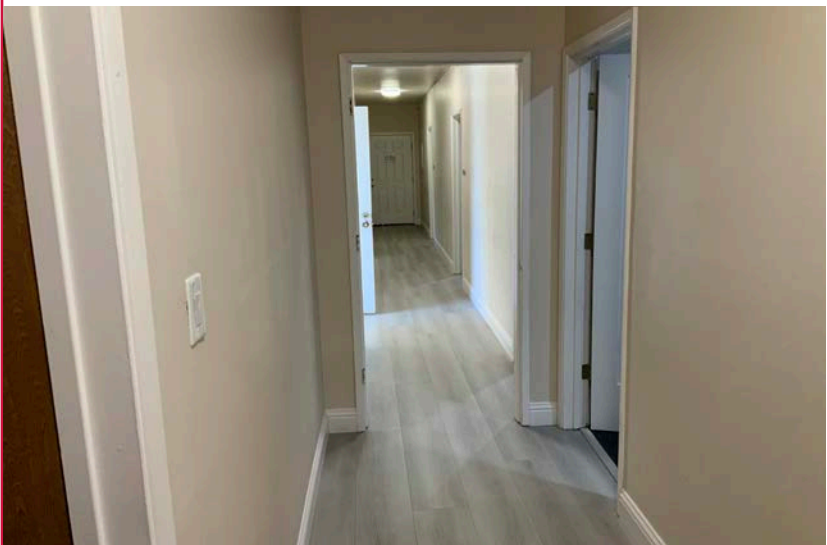
Suites can be combined for larger configurations



FLOOR PLAN - SECOND FLOOR

379
S. LIVERMORE AVE.

PHOTO GALLERY



FOR LEASE

262±SF UP TO 2,616±SF OFFICE SPACES AVAILABLE

379 S. LIVERMORE AVENUE | LIVERMORE, CA 94550



Mark Rinkle

Principal

mrinkle@lee-associates.com

925-737-4145

LIC NO 01512632



Kirsten Johnsen

Principal

kjohnsen@lee-associates.com

925-519-7818

LIC NO 02133540