



3025 STENDER WAY

±13,640 SF Manufacturing/Tech Building

±40,850 SF parcel/standalone asset

±25% HVAC office; 20% HVAC lab;
55% lab/manufacturing, assembly, test

Silicon Valley Power (SVP) – significant cost savings
and reliability

800 Amps @ 277/480 Volts (Tenant to confirm);
distributed air lines in place

3 grade level doors and 2 dock well positions

±15' clear height

2.5/1,000 SF parking ratio

12' x 60' fenced, covered, gated cage in rear

Warehouse has many skylights, providing abundant
natural light

Market-ready improvements with new LED lighting,
new ADA restrooms, polished concrete warehouse
floor, bonus large industrial sink, energy-efficient roof
(2 yrs new)

Monument signage (Tenant to confirm)

Possible fenced yard area

2 blocks from Santa Clara Square Marketplace, with
Whole Foods plus dozens of eateries and shops

For more leasing information contact

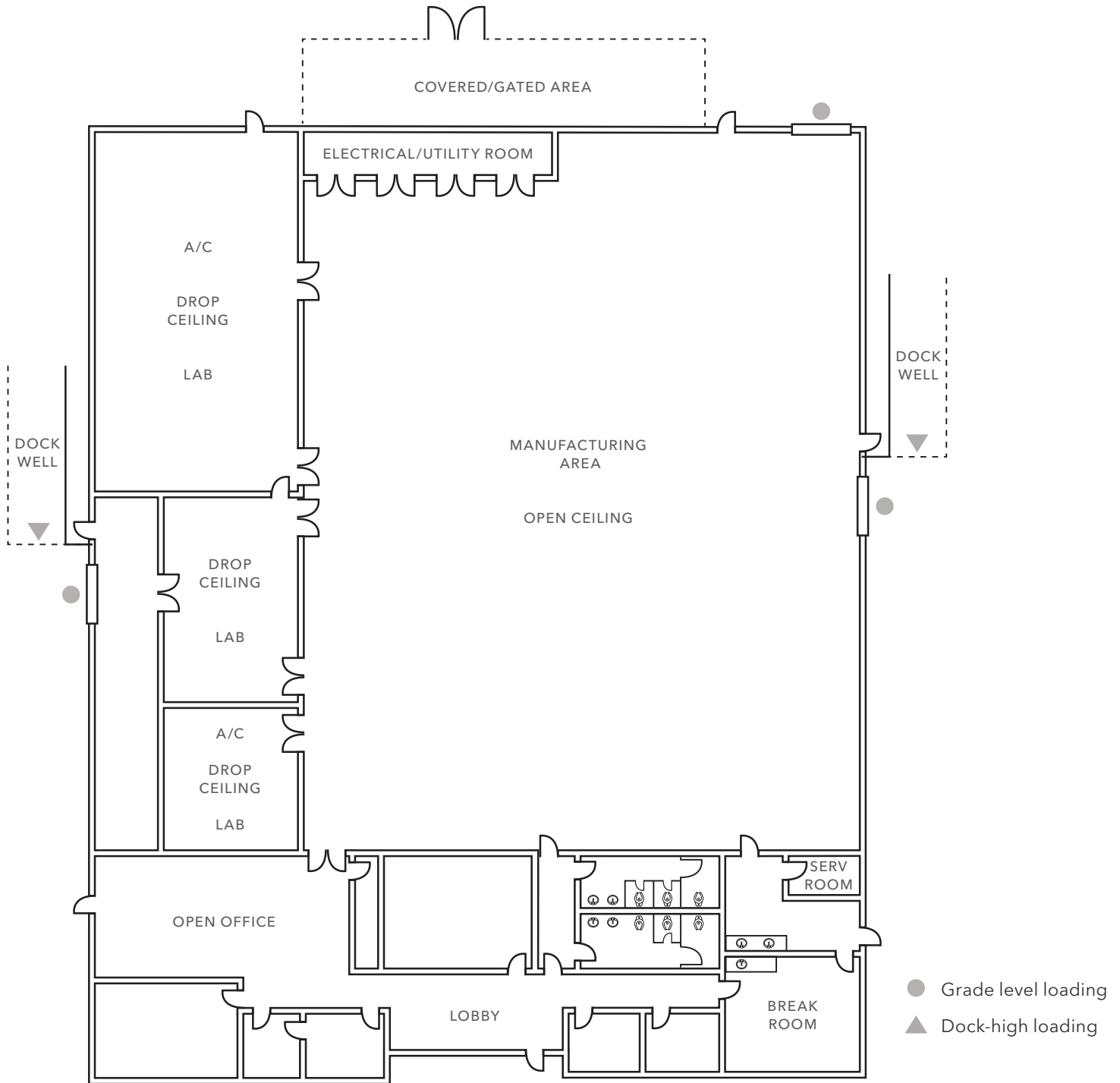
STEVE ZAMUDIO, CCIM

408.888.7529

steve.zamudio@kidder.com

LIC N° 00905956

KIDDER.COM



FLOOR PLAN NOT TO SCALE

STEVE ZAMUDIO, CCIM 408.888.7529 | steve.zamudio@kidder.com | LIC N° 00905956

KIDDER.COM

This information supplied herein is from sources we deem reliable. It is provided without any representation, warranty, or guarantee, expressed or implied as to its accuracy. Prospective Buyer or Tenant should conduct an independent investigation and verification of all matters deemed to be material, including, but not limited to, statements of income and expenses. Consult your attorney, accountant, or other professional advisor.



STEVE ZAMUDIO, ccim 408.888.7529 | steve.zamudio@kidder.com | LIC N° 00905956

KIDDER.COM

This information supplied herein is from sources we deem reliable. It is provided without any representation, warranty, or guarantee, expressed or implied as to its accuracy. Prospective Buyer or Tenant should conduct an independent investigation and verification of all matters deemed to be material, including, but not limited to, statements of income and expenses. Consult your attorney, accountant, or other professional advisor.





STEVE ZAMUDIO, ccim 408.888.7529 | steve.zamudio@kidder.com | LIC N° 00905956

KIDDER.COM

This information supplied herein is from sources we deem reliable. It is provided without any representation, warranty, or guarantee, expressed or implied as to its accuracy. Prospective Buyer or Tenant should conduct an independent investigation and verification of all matters deemed to be material, including, but not limited to, statements of income and expenses. Consult your attorney, accountant, or other professional advisor.





STEVE ZAMUDIO, ccim 408.888.7529 | steve.zamudio@kidder.com | LIC N° 00905956

KIDDER.COM

This information supplied herein is from sources we deem reliable. It is provided without any representation, warranty, or guarantee, expressed or implied as to its accuracy. Prospective Buyer or Tenant should conduct an independent investigation and verification of all matters deemed to be material, including, but not limited to, statements of income and expenses. Consult your attorney, accountant, or other professional advisor.





±25%

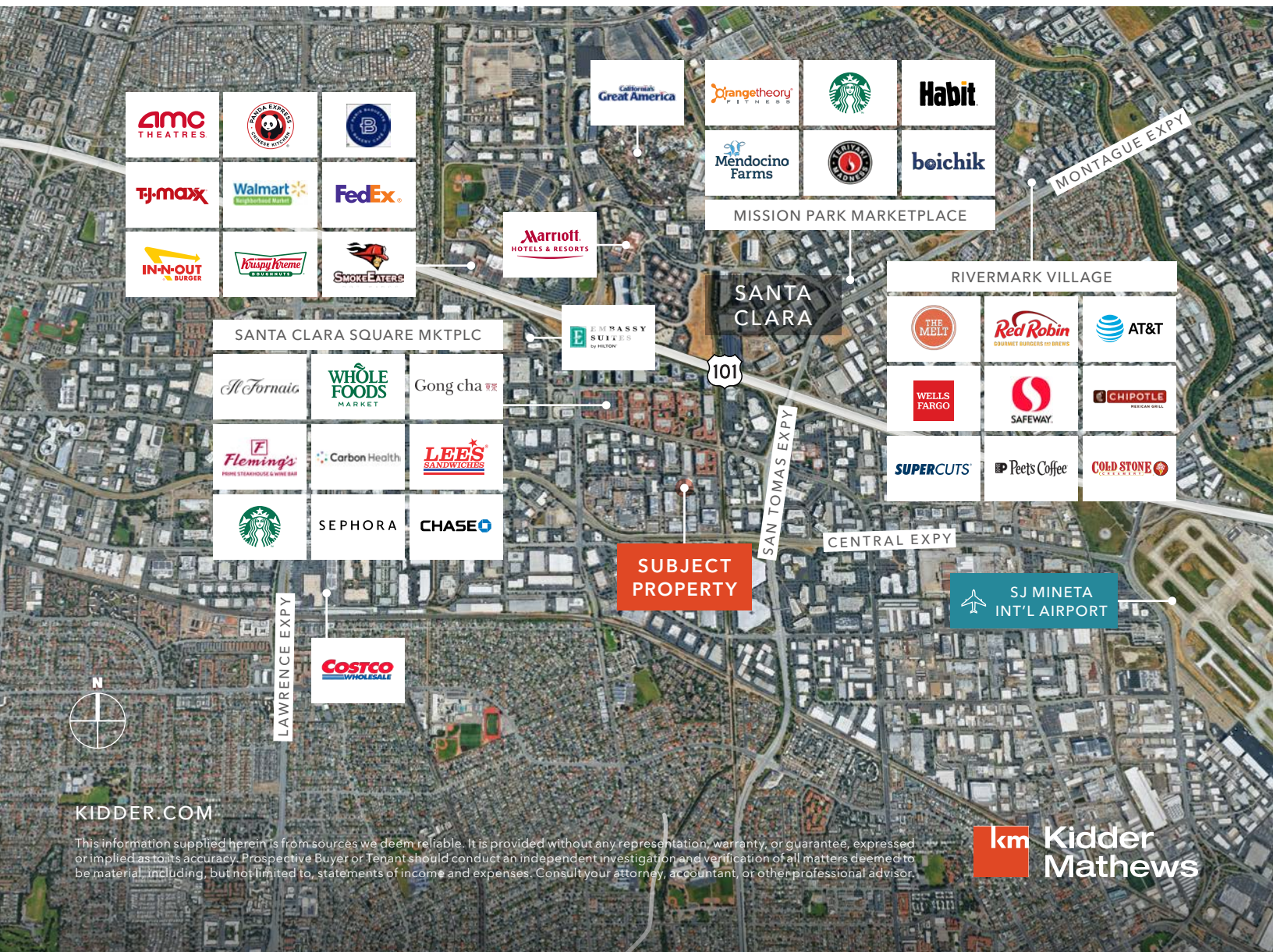
HVAC OFFICE SPACE

±20%

HVAC LAB SPACE

±55%

MANUFACTURING SPACE



KIDDER.COM

This information supplied herein is from sources we deem reliable. It is provided without any representation, warranty, or guarantee, expressed or implied as to its accuracy. Prospective Buyer or Tenant should conduct an independent investigation and verification of all matters deemed to be material, including, but not limited to, statements of income and expenses. Consult your attorney, accountant, or other professional advisor.

km Kidder Mathews