



# 2nd gen Restaurant Space.

1074 Forestdale Blvd, Birmingham, AL 35214



eXp Commercial | 100 Chase Park South | Hoover, AL 35244 |

**Pam Reaves**

205.365.3228

[pam.reaves@expcommercial.com](mailto:pam.reaves@expcommercial.com)

**Daniel Hadwin**

205.777.2555

[daniel.hadwin@exprealty.com](mailto:daniel.hadwin@exprealty.com)

# FOR SALE | Table of Contents

1074 Forestdale Blvd, Birmingham, AL 35214

PROPERTY INFORMATION	3	eXp Commercial, LLC, a Delaware limited liability company operates a commercial real estate business and is an affiliate ("Affiliate") of eXp World Holdings, Inc., a Delaware corporation (together with its subsidiaries and Affiliate, "eXp"). eXp and the reported owner(s) ("Owner(s)") of the property referenced herein ("Property") present this Confidential Offering Memorandum ("Memorandum") to assist the recipient(s) ("You" or "Your") in evaluating the Property and it is intended solely for Your limited use in determining whether you desire to acquire the Property. This Memorandum contains a brief summary of selected information pertaining to the Property and should not be considered all-inclusive or permanent. The information in this Memorandum has been obtained from sources believed to be reliable, t however, eXp has not verified it and neither Owner(s) nor eXp make any guaranty, warranty or representation, express or implied, as to the accuracy or completeness of this Memorandum or the information contained herein.
LOCATION INFORMATION	8	
DEMOGRAPHICS	13	
ADVISOR BIOS	15	

It is highly recommended that You independently verify each item of information contained in this Memorandum and have the same reviewed by your tax accountant, investment advisor, and/or legal counsel. This Memorandum and any ongoing or future communications You may have with eXp and/or Owner(s) and its and their respective officers, brokers, agents, affiliates or employees regarding this Memorandum or the Property does not in any way constitute or convey any guaranty, warranty or representation, express or implied, or legal, investment or tax advice to You. All assumptions, projections, estimates and/or opinions expressed or implied in this Memorandum are provided as examples only and all information is subject to change, error, omissions and/or withdrawal without notice. Any references in the Memorandum to boundary, area, height, acreage, building or premises size or square footage are approximations only and should be independently verified by You. Any references in the Memorandum to any lease or tenant information, including and without limitation to the premises, rental rates, rent escalations, common area expenses, percentage rents and lease maturities should be independently verified by You. You should conduct your own investigations and due diligence of the Property, including without limitation to environmental and physical condition inspections and reach your own conclusions regarding the suitability of the Property for investment.

eXp and Owner(s) assume no responsibility for the accuracy or completeness of any information contained in this Memorandum. eXp and Owner(s) expressly disclaim any implied or expressed warranties of merchantability, fitness for a particular purpose or non-infringement of intellectual property relating to this Memorandum. In no event shall eXp or Owner(s), and its and their respective officers, brokers, agents, affiliates or employees, be liable for any damages resulting from the reliance on or use of any information in this Memorandum, including but not limited to direct, special, indirect, consequential or incidental damages.

By accepting receipt of this Memorandum, You agree to the following: (a) This Memorandum is of a highly confidential nature; it will be held in the strictest confidence and shall be returned to eXp upon request; (b) You will not contact any property manager, contractor, employee or tenant of the Property regarding the Property or this Memorandum, without prior approval of eXp or Owner(s); and (c) You understand and agree that Affiliate represents Owner(s) and not You and (iv) this Memorandum and the information contained herein shall not be used by You in any way that is detrimental to Owner(s), or eXp. Neither eXp nor Owner(s) shall have any obligation to pay any commission, finder's fee, or any other compensation to any Broker, Agent or other person. You may provide information to persons retained by You to evaluate the Property only after first obtaining a signed Confidentiality Agreement from such persons and providing a copy of such agreement to eXp via email at [legal@exprealty.net](mailto:legal@exprealty.net).

The Owner(s) shall have no legal commitment or obligation to You or any person(s) or entity reviewing this Memorandum or making an offer to purchase, lease, or finance the Property unless and until written agreement(s) for the purchase or finance of the Property are considered satisfactory to Owner(s) in its sole and absolute discretion and have been fully executed, delivered, and approved by the Owner(s) and any conditions to the Owner's obligations therein have been fully satisfied or waived.

The Owner(s) expressly reserves the right, at its sole and absolute discretion, to reject any or all expressions of interest or offers to purchase or lease the Property, and/or to terminate discussion with You or any other person or entity at any time with or without notice, which may or may not arise as a result of review of the Memorandum.

**Pam Reaves**

205.365.3228

[pam.reaves@expcommercial.com](mailto:pam.reaves@expcommercial.com)

**Daniel Hadwin**

205.777.2555

[daniel.hadwin@exprealty.com](mailto:daniel.hadwin@exprealty.com)



eXp Commercial, LLC, its direct and indirect parents and their subsidiaries (together, "We") obtained the information above from sources believed to be reliable, however, We have not verified its accuracy and make no guarantee, warranty or representation, expressed or implied, about such information. The information contained above is submitted subject to the possibility of errors, omissions, price changes, rental or other conditions, prior sale, lease or financing, or withdrawal without notice. Any projections, opinions, assumptions or estimates of the information contained above or provided in connection therewith, either expressed or implied, are for example only, and they may not represent current or future performance of the subject property. You, together with your tax and legal advisors, should conduct your own thorough investigation of the subject property and potential investment.





eXp Commercial | 100 Chase Park South | Hoover, AL 35244 |

**Pam Reaves**

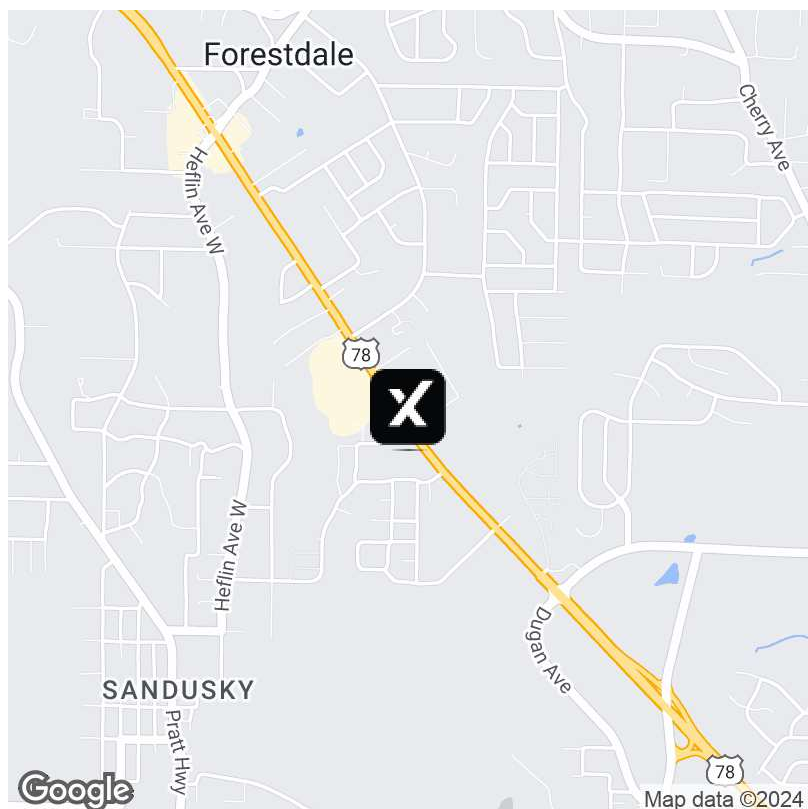
205.365.3228  
pam.reaves@expcommercial.com

**Daniel Hadwin**

205.777.2555  
daniel.hadwin@exprealty.com

# FOR SALE | Executive Summary

1074 Forestdale Blvd, Birmingham, AL 35214



## Offering Summary

Sale Price:	\$499,000
Building Size:	6,721 SF
Available SF:	
Lot Size:	72,034 SF
Price / SF:	\$74.24
Year Built:	1980
Zoning:	C1
Market:	Birmingham MSA
Submarket:	Forestdale

## Property Overview

Introducing an exceptional opportunity for Retail / Restaurant investors in the Birmingham MSA area. This property at 1074 Forestdale Blvd presents a 6,721 SF building, ideal for retail or restaurant ventures. Constructed in 1980, this property is zoned C1, providing flexibility for a variety of commercial uses. Its strategic positioning in the thriving Birmingham MSA area ensures excellent visibility and access for potential customers. Don't miss out on the chance to establish a retail or restaurant presence in this market.

## Property Highlights

- - 6,721 SF building ideal for retail or restaurant ventures
- - Constructed in 1980
- - Zoned C1, allowing for a variety of commercial uses
- - Prime location in the Birmingham MSA area
- - Excellent visibility and access for potential customers

### Pam Reaves

205.365.3228  
pam.reaves@expcommercial.com

### Daniel Hadwin

205.777.2555  
daniel.hadwin@exprealty.com



eXp Commercial, LLC, its direct and indirect parents and their subsidiaries (together, "We") obtained the information above from sources believed to be reliable, however, We have not verified its accuracy and make no guarantee, warranty or representation, expressed or implied, about such information. The information contained above is submitted subject to the possibility of errors, omissions, price changes, rental or other conditions, prior sale, lease or financing, or withdrawal without notice. Any projections, opinions, assumptions or estimates of the information contained above or provided in connection therewith, either expressed or implied, are for example only, and they may not represent current or future performance of the subject property. You, together with your tax and legal advisors, should conduct your own thorough investigation of the subject property and potential investment.



# FOR SALE | Property Description

1074 Forestdale Blvd, Birmingham, AL 35214



## Property Description

Introducing an exceptional opportunity for Retail / Restaurant investors in the Birmingham MSA area. This property at 1074 Forestdale Blvd presents a 6,721 SF building, ideal for retail or restaurant ventures. Constructed in 1980, this property is zoned C1, providing flexibility for a variety of commercial uses. Its strategic positioning in the thriving Birmingham MSA area ensures excellent visibility and access for potential customers. Don't miss out on the chance to establish a retail or restaurant presence in this market.

## Location Description

Located within the Birmingham MSA, this area offers a prime investment opportunity for Restaurant/Retail investors. The location boasts proximity to notable attractions like the Birmingham Museum of Art, Birmingham Zoo, and the vibrant entertainment and dining scene in downtown Birmingham. The area also benefits from excellent transportation links.

## Power Description

Alabama Power

## Gas Description

Spire

**Pam Reaves**

205.365.3228

[pam.reaves@expcommercial.com](mailto:pam.reaves@expcommercial.com)

**Daniel Hadwin**

205.777.2555

[daniel.hadwin@exprealty.com](mailto:daniel.hadwin@exprealty.com)



eXp Commercial, LLC, its direct and indirect parents and their subsidiaries (together, "We") obtained the information above from sources believed to be reliable, however, We have not verified its accuracy and make no guarantee, warranty or representation, expressed or implied, about such information. The information contained above is submitted subject to the possibility of errors, omissions, price changes, rental or other conditions, prior sale, lease or financing, or withdrawal without notice. Any projections, opinions, assumptions or estimates of the information contained above or provided in connection therewith, either expressed or implied, are for example only, and they may not represent current or future performance of the subject property. You, together with your tax and legal advisors, should conduct your own thorough investigation of the subject property and potential investment.

# FOR SALE | Complete Highlights

1074 Forestdale Blvd, Birmingham, AL 35214



## Property Highlights

- - 6,721 SF building ideal for retail or restaurant ventures
- - Constructed in 1980
- - Zoned C1, allowing for a variety of commercial uses
- - Prime location in the Birmingham MSA area
- - Excellent visibility and access for potential customers

**Pam Reaves**

205.365.3228

[pam.reaves@expcommercial.com](mailto:pam.reaves@expcommercial.com)

**Daniel Hadwin**

205.777.2555

[daniel.hadwin@exprealty.com](mailto:daniel.hadwin@exprealty.com)

**exp**<sup>TM</sup>  
COMMERCIAL

eXp Commercial, LLC, its direct and indirect parents and their subsidiaries (together, "We") obtained the information above from sources believed to be reliable, however, We have not verified its accuracy and make no guarantee, warranty or representation, expressed or implied, about such information. The information contained above is submitted subject to the possibility of errors, omissions, price changes, rental or other conditions, prior sale, lease or financing, or withdrawal without notice. Any projections, opinions, assumptions or estimates of the information contained above or provided in connection therewith, either expressed or implied, are for example only, and they may not represent current or future performance of the subject property. You, together with your tax and legal advisors, should conduct your own thorough investigation of the subject property and potential investment.



# FOR SALE | Additional Photos

1074 Forestdale Blvd, Birmingham, AL 35214



**Pam Reaves**

205.365.3228

[pam.reaves@expcommercial.com](mailto:pam.reaves@expcommercial.com)

**Daniel Hadwin**

205.777.2555

[daniel.hadwin@exprealty.com](mailto:daniel.hadwin@exprealty.com)

**exp**<sup>TM</sup>  
COMMERCIAL

eXp Commercial, LLC, its direct and indirect parents and their subsidiaries (together, "We") obtained the information above from sources believed to be reliable, however, We have not verified its accuracy and make no guarantee, warranty or representation, expressed or implied, about such information. The information contained above is submitted subject to the possibility of errors, omissions, price changes, rental or other conditions, prior sale, lease or financing, or withdrawal without notice. Any projections, opinions, assumptions or estimates of the information contained above or provided in connection therewith, either expressed or implied, are for example only, and they may not represent current or future performance of the subject property. You, together with your tax and legal advisors, should conduct your own thorough investigation of the subject property and potential investment.





# 2

## LOCATION INFORMATION

eXp Commercial | 100 Chase Park South | Hoover, AL 35244 |

**Pam Reaves**

205.365.3228  
pam.reaves@expcommercial.com

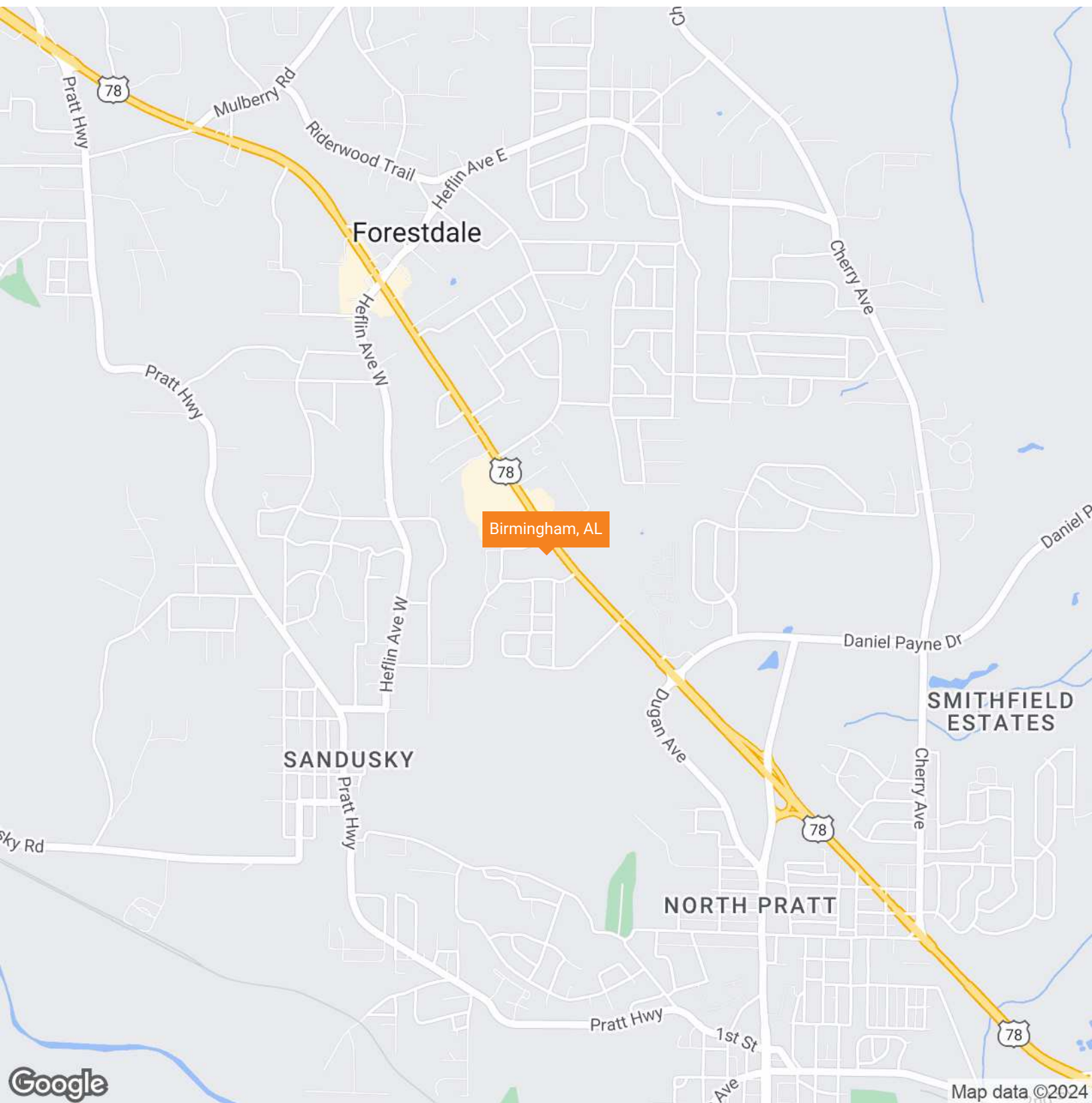
**Daniel Hadwin**

205.777.2555  
daniel.hadwin@exprealty.com



# FOR SALE | Regional Map

1074 Forestdale Blvd, Birmingham, AL 35214



**Pam Reaves**

205.365.3228

[pam.reaves@expcommercial.com](mailto:pam.reaves@expcommercial.com)

**Daniel Hadwin**

205.777.2555

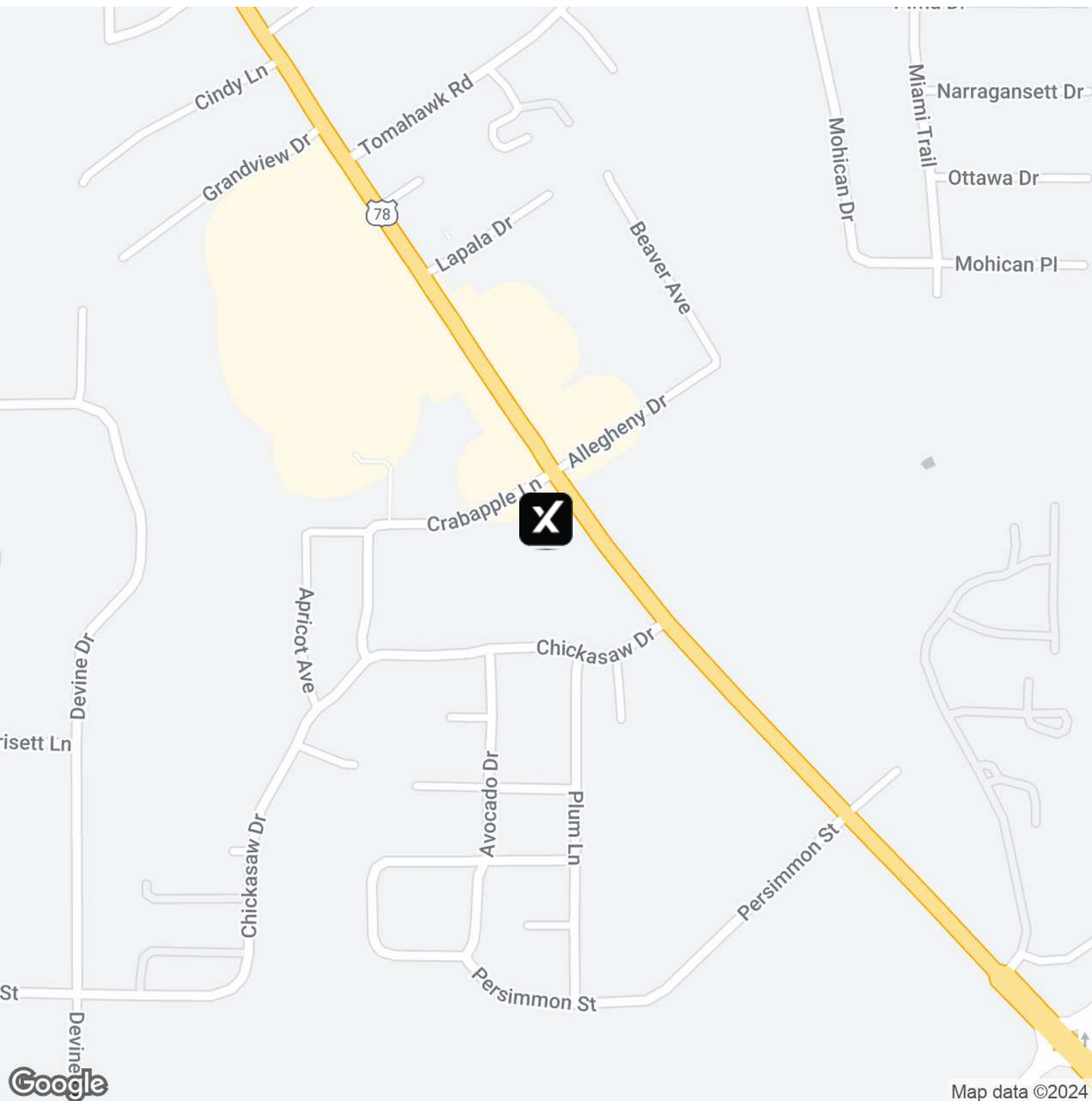
[daniel.hadwin@exprealty.com](mailto:daniel.hadwin@exprealty.com)

**exp**<sup>TM</sup>  
COMMERCIAL

eXp Commercial, LLC, its direct and indirect parents and their subsidiaries (together, "We") obtained the information above from sources believed to be reliable, however, We have not verified its accuracy and make no guarantee, warranty or representation, expressed or implied, about such information. The information contained above is submitted subject to the possibility of errors, omissions, price changes, rental or other conditions, prior sale, lease or financing, or withdrawal without notice. Any projections, opinions, assumptions or estimates of the information contained above or provided in connection therewith, either expressed or implied, are for example only, and they may not represent current or future performance of the subject property. You, together with your tax and legal advisors, should conduct your own thorough investigation of the subject property and potential investment.

# FOR SALE | Location Map

1074 Forestdale Blvd, Birmingham, AL 35214



**Pam Reaves**

205.365.3228

pam.reaves@expcommercial.com

**Daniel Hadwin**

205.777.2555

daniel.hadwin@exprealty.com

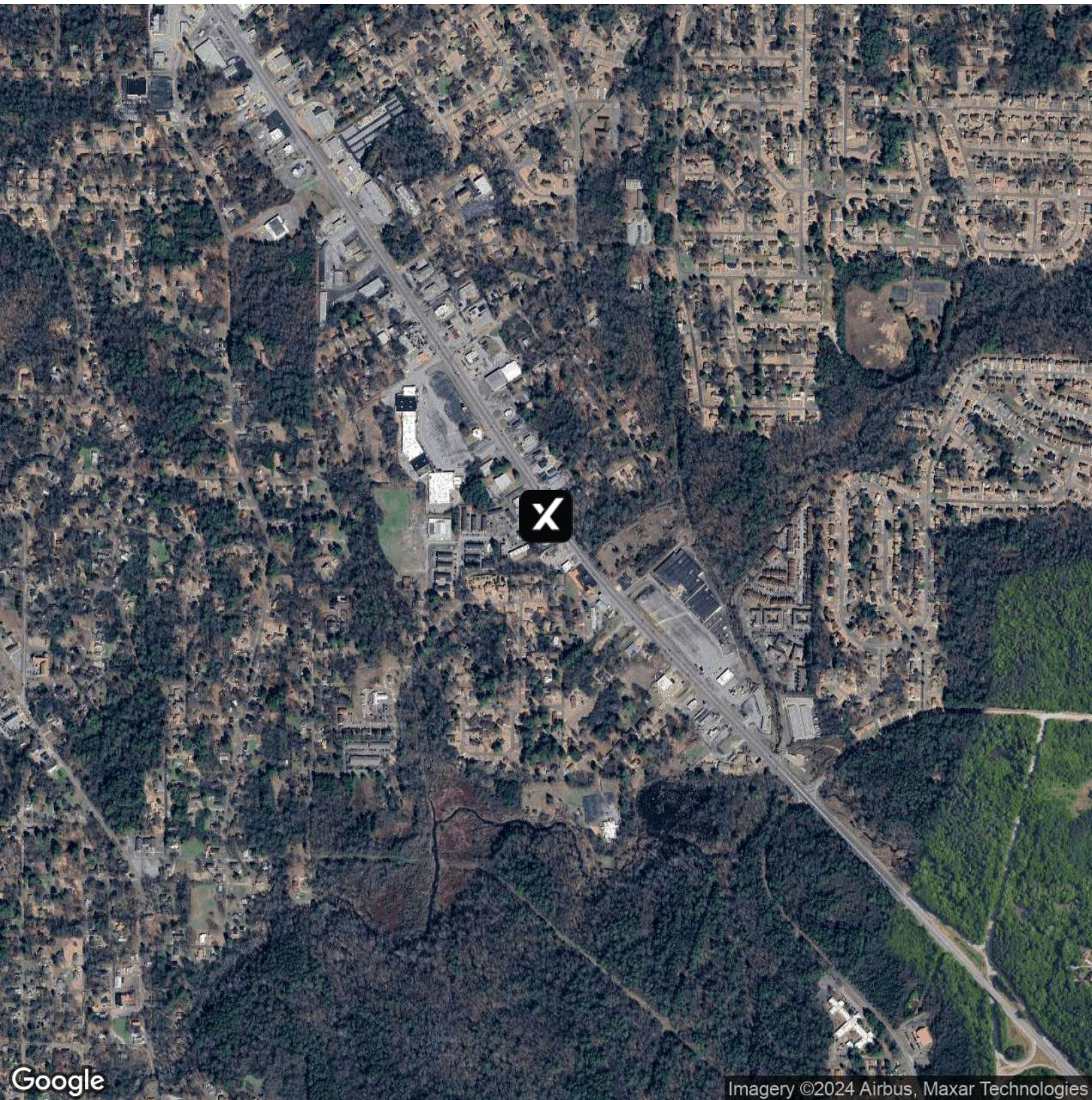
**exp**<sup>TM</sup>  
COMMERCIAL

eXp Commercial, LLC, its direct and indirect parents and their subsidiaries (together, "We") obtained the information above from sources believed to be reliable, however, We have not verified its accuracy and make no guarantee, warranty or representation, expressed or implied, about such information. The information contained above is submitted subject to the possibility of errors, omissions, price changes, rental or other conditions, prior sale, lease or financing, or withdrawal without notice. Any projections, opinions, assumptions or estimates of the information contained above or provided in connection therewith, either expressed or implied, are for example only, and they may not represent current or future performance of the subject property. You, together with your tax and legal advisors, should conduct your own thorough investigation of the subject property and potential investment.



# FOR SALE | Aerial Map

1074 Forestdale Blvd, Birmingham, AL 35214



Google

Imagery ©2024 Airbus, Maxar Technologies

**Pam Reaves**

205.365.3228

[pam.reaves@expcommercial.com](mailto:pam.reaves@expcommercial.com)

**Daniel Hadwin**

205.777.2555

[daniel.hadwin@exprealty.com](mailto:daniel.hadwin@exprealty.com)

**exp**<sup>TM</sup>  
COMMERCIAL

eXp Commercial, LLC, its direct and indirect parents and their subsidiaries (together, "We") obtained the information above from sources believed to be reliable, however, We have not verified its accuracy and make no guarantee, warranty or representation, expressed or implied, about such information. The information contained above is submitted subject to the possibility of errors, omissions, price changes, rental or other conditions, prior sale, lease or financing, or withdrawal without notice. Any projections, opinions, assumptions or estimates of the information contained above or provided in connection therewith, either expressed or implied, are for example only, and they may not represent current or future performance of the subject property. You, together with your tax and legal advisors, should conduct your own thorough investigation of the subject property and potential investment.



FOR SALE | **Financial Summary**

1074 Forestdale Blvd, Birmingham, AL 35214

**Investment Overview**

Price	\$499,000
Price per SF	\$74

**Operating Data**

**Financing Data**

**Pam Reaves**  
205.365.3228  
pam.reaves@expcommercial.com

**Daniel Hadwin**  
205.777.2555  
daniel.hadwin@exprealty.com



eXp Commercial, LLC, its direct and indirect parents and their subsidiaries (together, "We") obtained the information above from sources believed to be reliable, however, We have not verified its accuracy and make no guarantee, warranty or representation, expressed or implied, about such information. The information contained above is submitted subject to the possibility of errors, omissions, price changes, rental or other conditions, prior sale, lease or financing, or withdrawal without notice. Any projections, opinions, assumptions or estimates of the information contained above or provided in connection therewith, either expressed or implied, are for example only, and they may not represent current or future performance of the subject property. You, together with your tax and legal advisors, should conduct your own thorough investigation of the subject property and potential investment.





# 3

## DEMOGRAPHICS

eXp Commercial | 100 Chase Park South | Hoover, AL 35244 |

**Pam Reaves**

205.365.3228  
pam.reaves@expcommercial.com

**Daniel Hadwin**

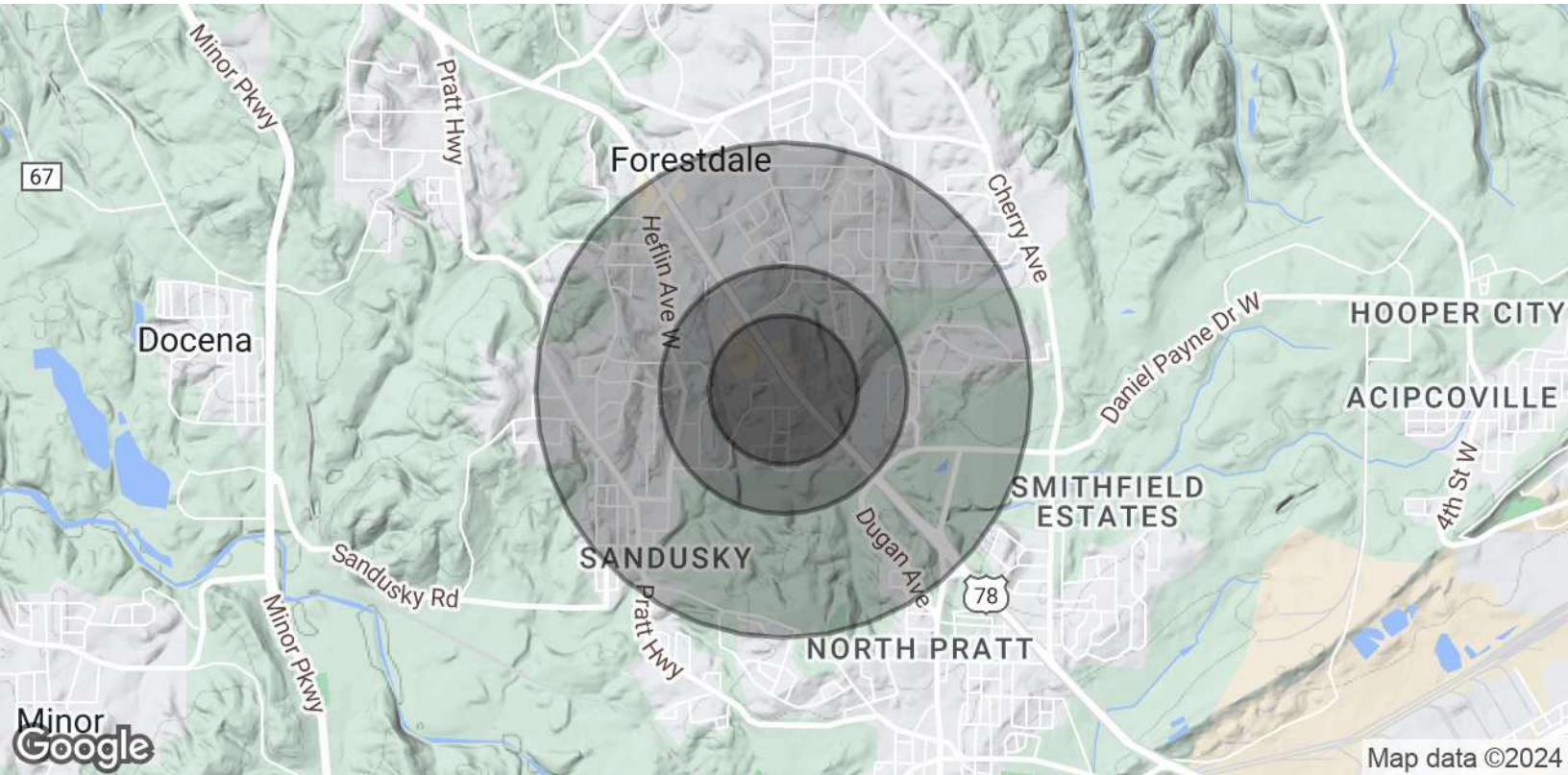
205.777.2555  
daniel.hadwin@exprealty.com

FOR SALE

|

Demographics Map & Report

1074 Forestdale Blvd, Birmingham, AL 35214



Population	0.3 Miles	0.5 Miles	1 Mile
Total Population	524	1,416	4,703
Average Age	39	40	42
Average Age (Male)	37	38	39
Average Age (Female)	41	42	44

Households & Income	0.3 Miles	0.5 Miles	1 Mile
Total Households	221	593	1,920
# of Persons per HH	2.4	2.4	2.4
Average HH Income	\$61,953	\$63,789	\$69,747
Average House Value	\$160,066	\$164,697	\$183,519

Demographics data derived from AlphaMap

Pam Reaves

205.365.3228

pam.reaves@expcommercial.com

Daniel Hadwin

205.777.2555

daniel.hadwin@exprealty.com



eXp Commercial, LLC, its direct and indirect parents and their subsidiaries (together, "We") obtained the information above from sources believed to be reliable, however, We have not verified its accuracy and make no guarantee, warranty or representation, expressed or implied, about such information. The information contained above is submitted subject to the possibility of errors, omissions, price changes, rental or other conditions, prior sale, lease or financing, or withdrawal without notice. Any projections, opinions, assumptions or estimates of the information contained above or provided in connection therewith, either expressed or implied, are for example only, and they may not represent current or future performance of the subject property. You, together with your tax and legal advisors, should conduct your own thorough investigation of the subject property and potential investment.





# 4

## ADVISOR BIOS

eXp Commercial | 100 Chase Park South | Hoover, AL 35244 |

---

**Pam Reaves**

205.365.3228  
pam.reaves@expcommercial.com

**Daniel Hadwin**

205.777.2555  
daniel.hadwin@exprealty.com

# FOR SALE | Advisor Bio 1

1074 Forestdale Blvd, Birmingham, AL 35214



**Pam Reaves**

Broker/Advisor

pam.reaves@expcommercial.com

Direct: 205.365.3228

AL #000046527

## Professional Background

I bring over 32 years of experience in residential, land, and commercial sales. I

obtained my Salesperson's License in 1991 and my Broker's License in 1995 and have enjoyed many years of serving clients and other agents

by owning my own Company, Professional Realty, and working as qualifying broker for 3F Homes, At Brokers, LLC, as well as Sperry CGA/The Andrews Group. I am a great resource for my clients and fellow brokers and always strive to be a market expert in our Alabama commercial real estate industry. I serve as a mentor for our agents new to commercial real estate and currently co chair industry committees within our brokerage, I am also happy to represent our commercial brokerage by serving on our state agent advisory council, and serve as a co-chair for the Birmingham Commercial Exchange.

I have a strong background in residential and commercial construction having co-owned a construction company for many years. That has always been a great resource in my real estate business as well.

I finished 2023 as the top commercial agent with eXp Commercial for the state of Alabama and am working hard to do the same for 2024 by serving more clients and working with other industry professionals to do the best job possible and to promote the commercial industry in Alabama!

I am happily married to Brad Rathje. I have three children, one daughter in law, a future daughter in law and four adorable and full of energy grandchildren.

I currently attend Clearbranch Methodist Church with my husband.

## Memberships

Birmingham CREW Network

Integrity B2B

Birmingham Commercial Exchange

### eXp Commercial

100 Chase Park South Suite 128  
Hoover, AL 35244

**Pam Reaves**

205.365.3228

pam.reaves@expcommercial.com

**Daniel Hadwin**

205.777.2555

daniel.hadwin@exprealty.com



eXp Commercial, LLC, its direct and indirect parents and their subsidiaries (together, "We") obtained the information above from sources believed to be reliable, however, We have not verified its accuracy and make no guarantee, warranty or representation, expressed or implied, about such information. The information contained above is submitted subject to the possibility of errors, omissions, price changes, rental or other conditions, prior sale, lease or financing, or withdrawal without notice. Any projections, opinions, assumptions or estimates of the information contained above or provided in connection therewith, either expressed or implied, are for example only, and they may not represent current or future performance of the subject property. You, together with your tax and legal advisors, should conduct your own thorough investigation of the subject property and potential investment.



# FOR SALE | Advisor Bio 2

1074 Forestdale Blvd, Birmingham, AL 35214

**Daniel Hadwin**

Real Estate Agent

daniel.hadwin@exprealty.com

Direct: 205.777.2555

**eXp Realty LLC**  
100 Chase Park s  
Birmingham, AL 35244

**Pam Reaves**

205.365.3228

pam.reaves@expcommercial.com

**Daniel Hadwin**

205.777.2555

daniel.hadwin@exprealty.com



eXp Commercial, LLC, its direct and indirect parents and their subsidiaries (together, "We") obtained the information above from sources believed to be reliable, however, We have not verified its accuracy and make no guarantee, warranty or representation, expressed or implied, about such information. The information contained above is submitted subject to the possibility of errors, omissions, price changes, rental or other conditions, prior sale, lease or financing, or withdrawal without notice. Any projections, opinions, assumptions or estimates of the information contained above or provided in connection therewith, either expressed or implied, are for example only, and they may not represent current or future performance of the subject property. You, together with your tax and legal advisors, should conduct your own thorough investigation of the subject property and potential investment.