

FOR SALE/LEASE



12K SF FLEX/INDUSTRIAL BUILDING

9724 Legler Road | Lenexa, KS 66219



PROPERTY FEATURES

- 12,915 SF flex/industrial building on 1.16 acre lot
- 1 Dock high, 1 Drive-in loading door
- Full HVAC throughout the building
- $\pm 15'$ clear height
- Zoned BP2
- Sale price reduced: \$2,001,825 (\$155/SF)
- Lease rate: \$14/SF + CAM



TODD WELTMER

tweltmer@Crossroads-KC.com

M (913) 558-3383

Crossroads Real Estate Group
O (816) 298-9998
7227 Metcalf Avenue, Suite 201
Overland Park, KS 66204



CROSSROADS
REAL ESTATE GROUP

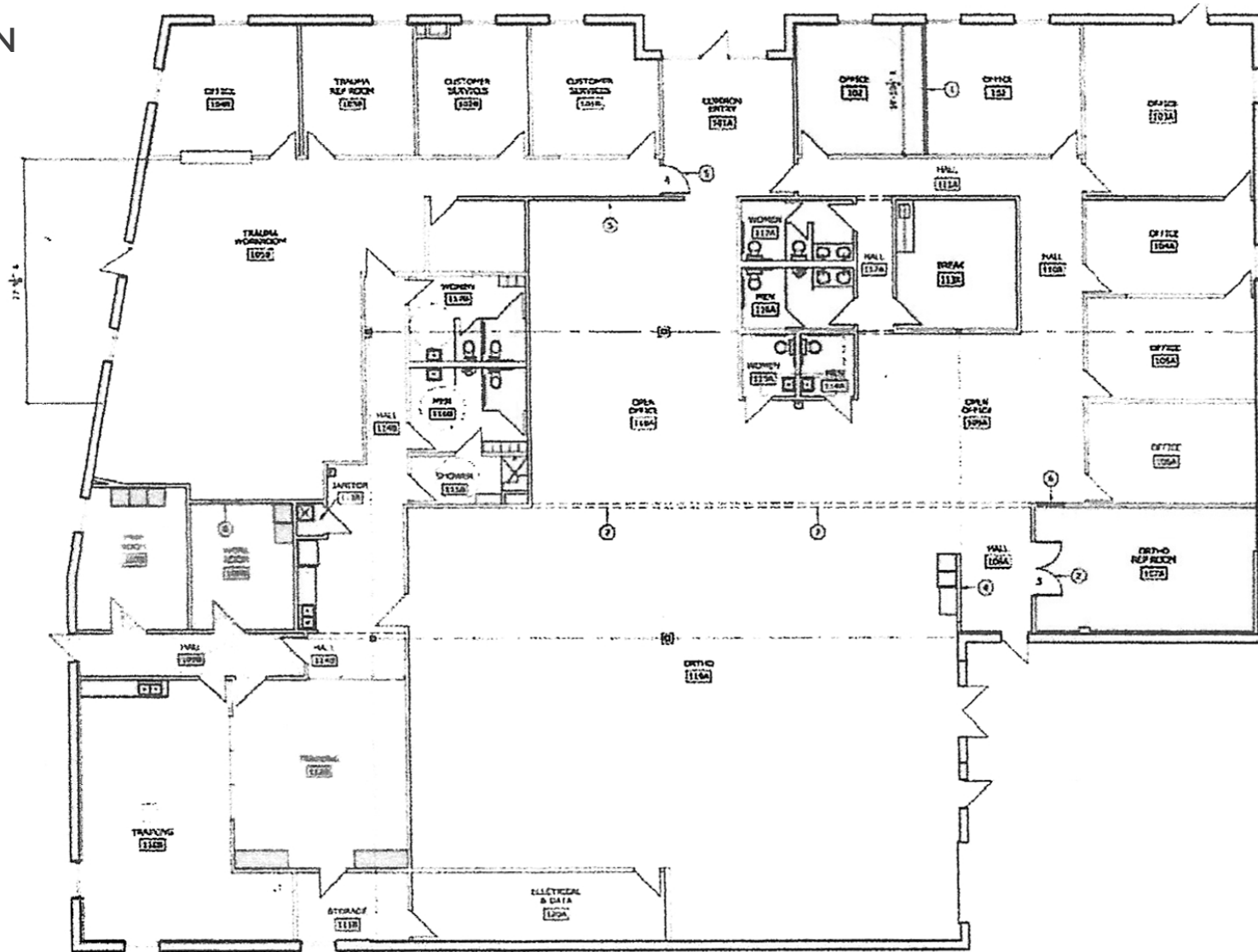
FOR SALE/LEASE



12K SF FLEX/INDUSTRIAL BUILDING

9724 Legler Road | Lenexa, KS 66219

FLOOR PLAN



The information contained herein has been obtained through sources deemed reliable by Crossroads Real Estate Group, but cannot be guaranteed for its accuracy. We recommend to the buyer that any information, which is of special interest, should be obtained through independent verification. All measurements are approximate.

Crossroads Real Estate Group
O (816) 298-9998
7227 Metcalf Avenue, Suite 201
Overland Park, KS 66204



CROSSROADS
REAL ESTATE GROUP

FOR SALE/LEASE



12K SF FLEX/INDUSTRIAL BUILDING

9724 Legler Road | Lenexa, KS 66219



INTERIOR WAREHOUSE/LOADING



NORTH SIDE ENTRANCES



DOCK HIGH LOADING



TODD WELTMER

tweltmer@Crossroads-KC.com

M (913) 558-3383

Crossroads Real Estate Group
O (816) 298-9998
7227 Metcalf Avenue, Suite 201
Overland Park, KS 66204

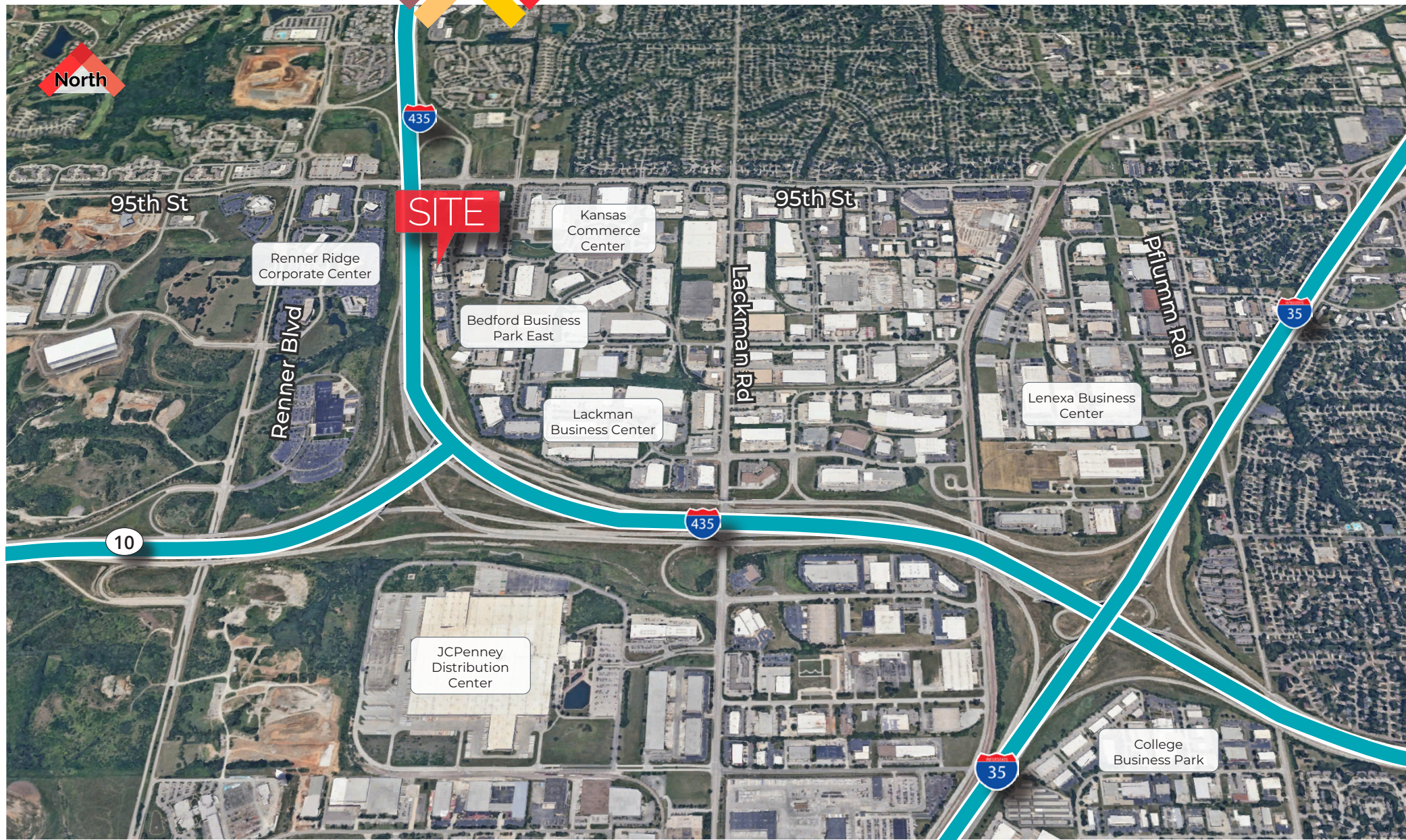


CROSSROADS
REAL ESTATE GROUP

FOR SALE/LEASE

12K SF FLEX/INDUSTRIAL BUILDING

9724 Legler Road | Lenexa, KS 66219



The information contained herein has been obtained through sources deemed reliable by Crossroads Real Estate Group, but cannot be guaranteed for its accuracy. We recommend to the buyer that any information, which is of special interest, should be obtained through independent verification. All measurements are approximate.

Crossroads Real Estate Group
O (816) 298-9998
7227 Metcalf Avenue, Suite 201
Overland Park, KS 66204



CROSSROADS
REAL ESTATE GROUP