

# Sublease

## Coastal Tower

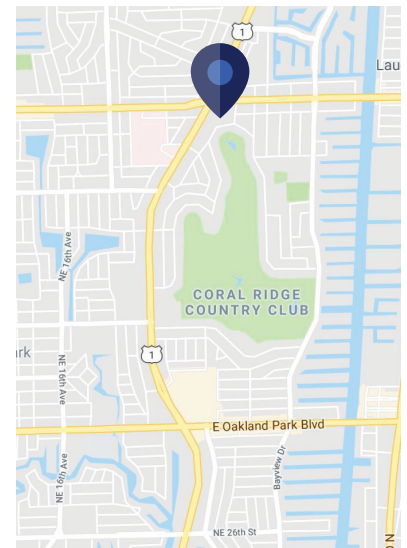
2400 E. Commercial Boulevard  
Fort Lauderdale, FL

### Space Profile:

<b>Premises</b>	Suite 825
<b>RSF</b>	2,168 SF
<b>Rental Rate</b>	\$20.00/NNN
<b>Availability</b>	Immediate
<b>Term</b>	Thru 02/28/2022
<b>Building Class</b>	Class A Office
<b>Submarket</b>	Fort Lauderdale
<b>Built/Reno</b>	1983/2008
<b>Parking</b>	4.00/1,000 SF

### Features:

- Furniture could be made available
- On-site café
- On-site fitness center
- 24/7 on-site security
- Easy access to Downtown Fort Lauderdale
- Free covered parking
- LEED® EB Silver certification



### Contact:



**Zach Talbot**  
954.676.1837  
ztalbot@cresa.com

**Cresa South Florida**  
110 SE 6th Street, Suite 1420  
Fort Lauderdale, FL



**Coastal Tower**  
2400 E. Commercial Boulevard  
Fort Lauderdale, FL

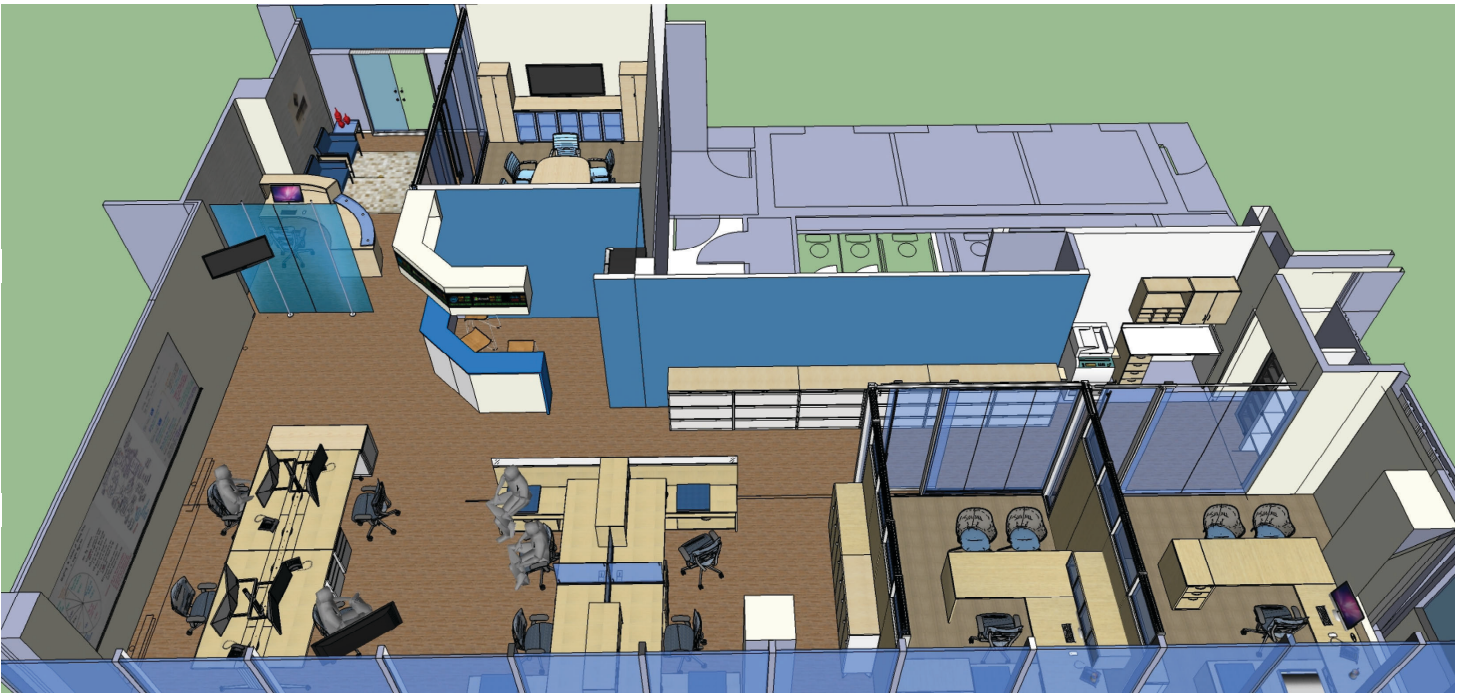


**cresa** . . .

Cresa © 2019. All rights reserved. The information contained in this document has been obtained from sources believed reliable. While Cresa does not doubt its accuracy, Cresa has not verified it and makes no guarantee, warranty, or representation about it. It is your responsibility to independently confirm its accuracy and completeness. Any projections, opinions, assumptions or estimates used are for example only and do not represent the current or future performance of the property. The value of this transaction to you depends on tax and other factors which should be evaluated by your tax, financial and legal advisors. You and your advisors should conduct a careful, independent investigation of the property to determine to your satisfaction the suitability of the property for your needs.

# Sublease

Suite 825 - 2,168 SF



cresa

Cresa © 2019. All rights reserved. The information contained in this document has been obtained from sources believed reliable. While Cresa does not doubt its accuracy, Cresa has not verified it and makes no guarantee, warranty, or representation about it. It is your responsibility to independently confirm its accuracy and completeness. Any projections, opinions, assumptions or estimates used are for example only and do not represent the current or future performance of the property. The value of this transaction to you depends on tax and other factors which should be evaluated by your tax, financial and legal advisors. You and your advisors should conduct a careful, independent investigation of the property to determine to your satisfaction the suitability of the property for your needs.